



Anil Plastics & Enterprises

Plastic
Moulding

Tool
Manufacturing

Product
Assemblies

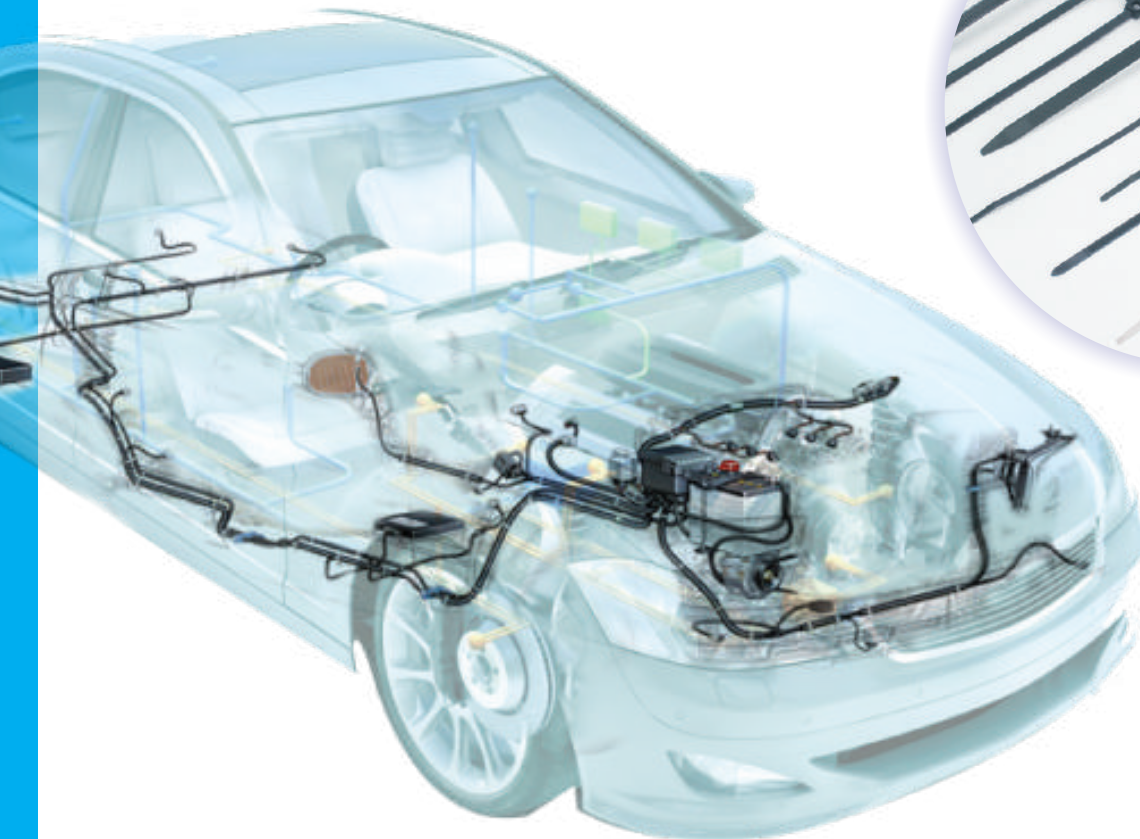
PRODUCT CATALOGUE



CERTIFICATIONS

IATF 16949

ISO 14001 | ISO 45001



We Mould to Your Needs,

*we trust that
you will like to entrust us with your requirements of
Injection Moulding Products
and rest assured,
we will meet or exceed your expectation.*



Mr. Anil Naik
Chairman & Managing Director

Anil Plastics & Enterprises, an IATF 16949:2016 ISO 14001:2015, ISO 45001:2018 certified engineering plastic processing industry was established in the year 1994 by the founder and present MD, Mr. Anil Naik. He had decided the path he would take when he was 17 and since then, has moved forward with confidence and commitment carving his own niche in the field.

It was a humble beginning as the journey began from a small shed at Warje, Pune with a team of two qualified persons who had a common dream, abundant energy, passion and a deep commitment to create a world class Plastic Manufacturing Facility. It has manifested into a state of art complex at Hinjewadi, Pune; but then, there are miles to go..

Today, APE has emerged as a major manufacturer of injection-Moulding services with 300 different products and 70 varieties of clips.

A target of Zero PPM rejection rate has been achieved year after year which has made APE a preferred supplier with some of the reputed customers in the country from Automobile, Electronics, Home Appliances, Agriculture and many other sectors. Due to its commitment to highest standards of Quality, APE has been able to retain all its customers right from the first orders.



Tooling to Components

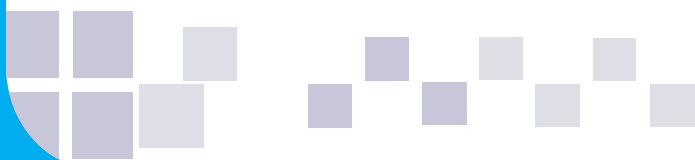


Our Vision

To become a global player in the field of Automotive, Textile, Engineering, Medical, Highly Precision, Aerospace parts.

Our Mission

- To serve the industry with world class plastic products, fulfilling needs of our customers, giving value for money and always moving up the value chain.
- To constantly upgrade our facilities, systems and the people to meet global challenges
- To embrace Green and work to preserve environment.



Our Mission

To serve the industry with world class plastic products, fulfilling needs of our customers, giving value for money and always moving up the value chain.
 To constantly upgrade our facilities, systems and the people to meet global challenges
 To embrace Green and work to preserve environment.

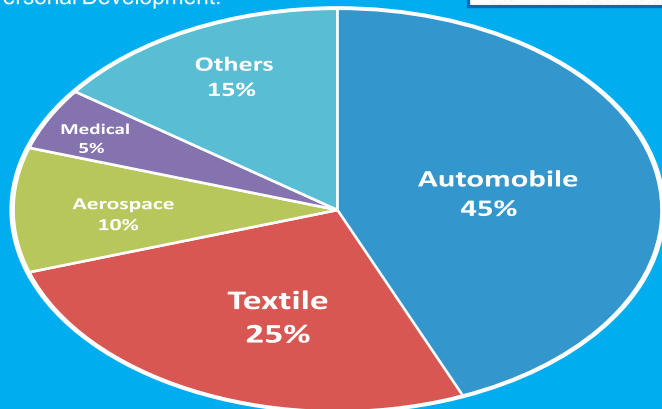
Operational Excellence Model:-



Quality Policy

We shall strive for continuous improvement in quality management system with commitment to enhance customer satisfaction and the reputation in the market through

1. Product Quality and Service.
2. On time delivery
3. Reduction In Waste.
4. Innovative Approach.
5. First Time Right.
6. Personal Development.



BUSINESS OFFERINGS



Insert Moulding



Insert Moulding

Micro Moulding



Over Moulding

Ultrasonic Welding



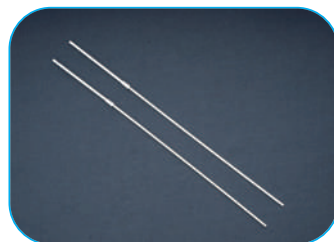
Auto Clips

Cable Ties

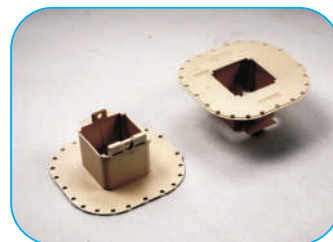
SPECIAL RAW MATERIAL



PEEK



PA 11



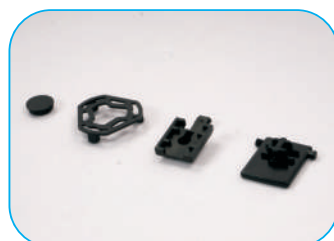
LCP



PPS 40% GF



TPU

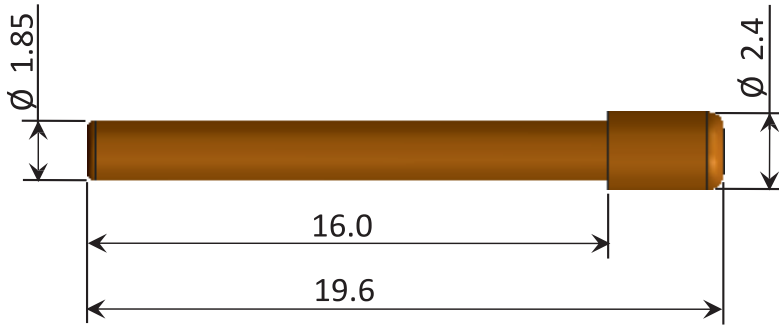


PC PBT

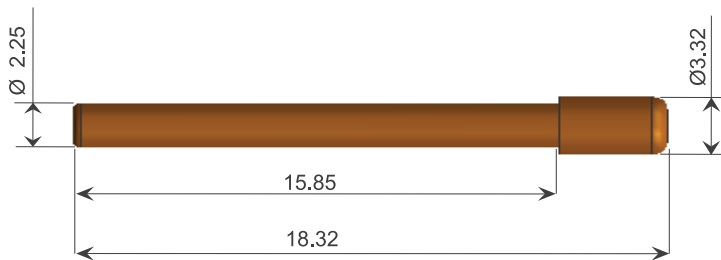


PA66 GF35%

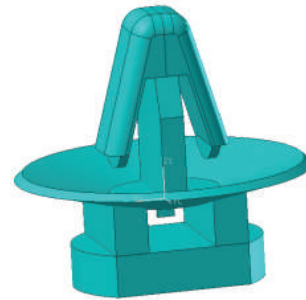
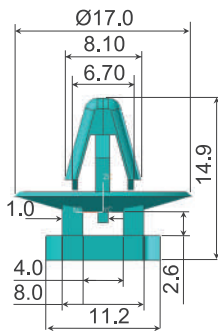
PRODUCT



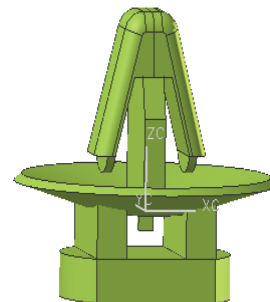
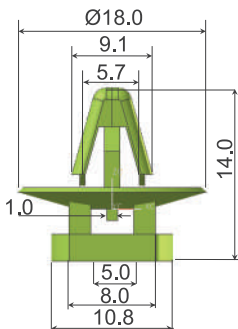
Part No.	Description	Application	Part Material & Color	Standard Packing Qty No.
APE-001	Secondary Lock Plug	With ECU Connector dummy plug	PA66 (WHITE)	2000 Nos.



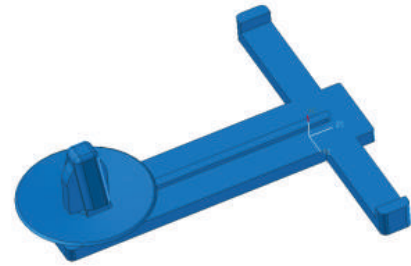
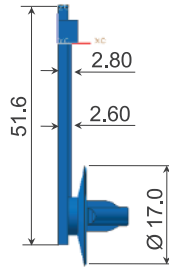
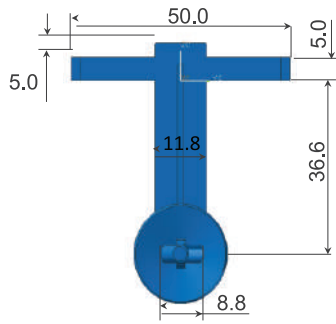
Part No.	Description	Application	Part Material & Color	Standard Packing Qty No.
APE-002	Secondary Lock Pin	With ECU Connector dummy plug	PA66 (WHITE)	2000 Nos.



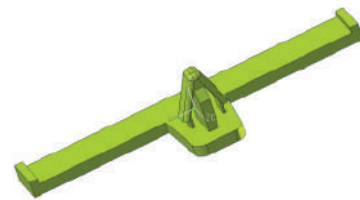
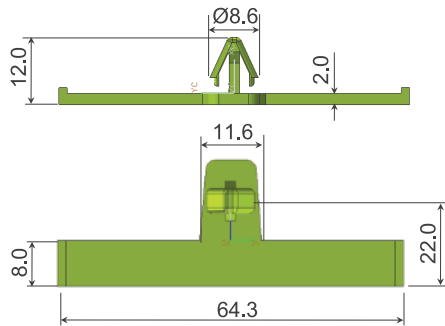
Part No.	Description	Application	Part Material & Color	Standard Packing Qty No.
APE-003	Head Body	With cable Tie (Suitable cable tie 3.6*150mm)	PA6 (Black)	2000 Nos.



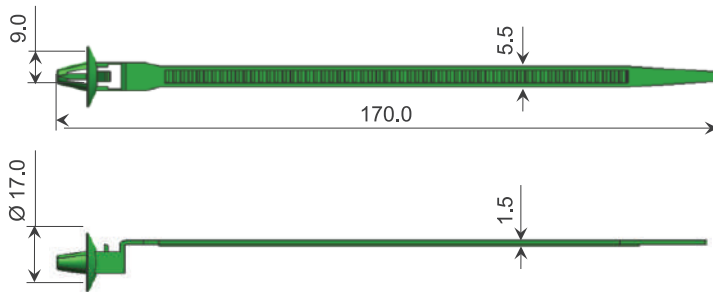
Part No.	Description	Application	Part Material & Color	Standard Packing Qty No.
APE-004	Head Body	With cable Tie (Suitable cable tie 4.8*150mm)	PA6 (Black)	5000 Nos.



Part No.	Description	Application	Part Material & Color	Standard Packing Qty No.
APE-005	T-Clip 47.6	Fitment with Ø 7.0 hole	PA6 (Black)	1000 Nos.

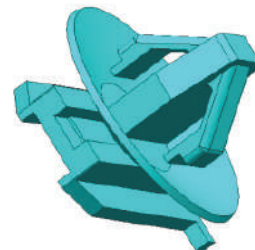
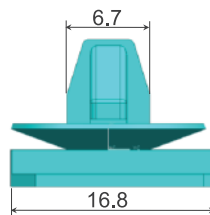
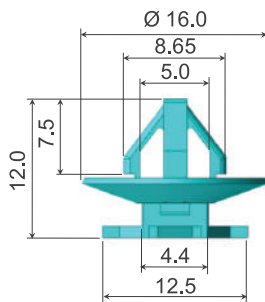


Part No.	Description	Application	Part Material & Color	Standard Packing Qty No.
APE-0007	B-Piller	Fitment with Ø 7.0 hole	PP (Black)	2000 Nos.

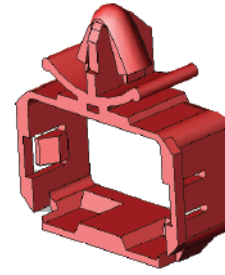
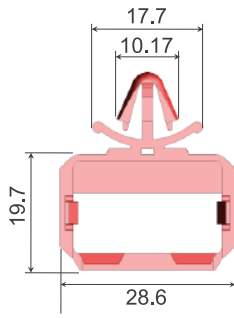


- * MOUNTING HOLE SIZE :- Ø 7.0 mm
- * PANEL THICKNESS :- 0.65 to 2.6 mm
- * INSERATION FORCE :- 40 N MAX
- * SEPERATION FORCS :- 140 N MIN

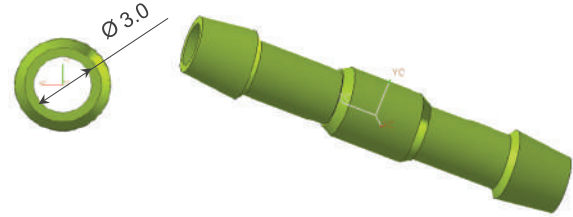
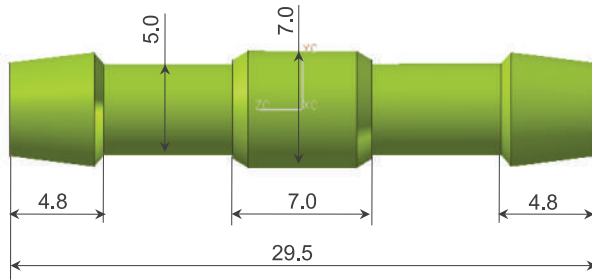
Part No.	Description	Application	Part Material & Color	Standard Packing Qty No.
APE-0008	Integrated Cable Tie 170.0mm	Fitment with Ø 7.0 hole	Pa66 (Natural)	1000 Nos.



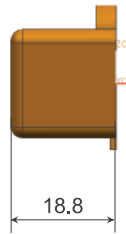
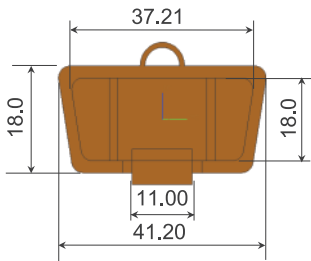
Part No.	Description	Application	Part Material & Color	Standard Packing Qty No.
APE-0009	MTG Mounting Clip	1.6 Super seal connector	PA6 (Red)	1000 Nos.



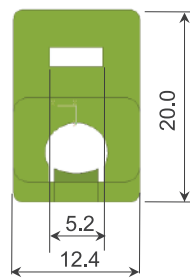
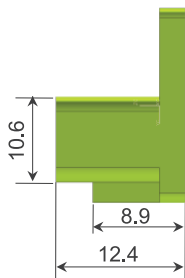
Part No.	Description	Application	Part Material & Color	Standard Packing Qty No.
APE-0010	JPT Clip	1.6 Super seal connector	PA6 (Black)	1000 Nos.



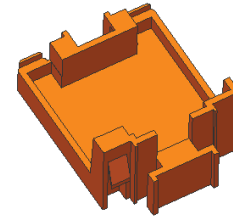
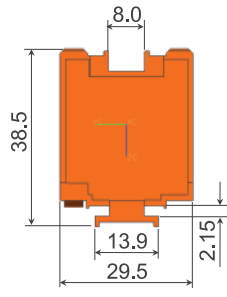
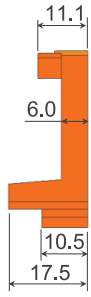
Part No.	Description	Application	Part Material & Color	Standard Packing Qty No.
APE-0011	END Joint	In Joining	PP (White)	1000 Nos.



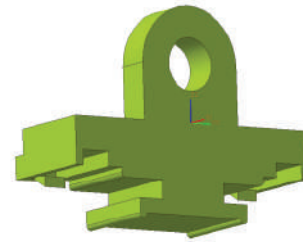
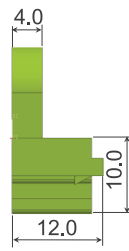
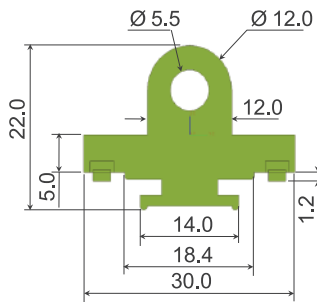
Part No.	Description	Application	Part Material & Color	Standard Packing Qty No.
APE-0012	Diagnostic Connector Cap	Diagnostic Cover	PP (White)	1000 Nos.



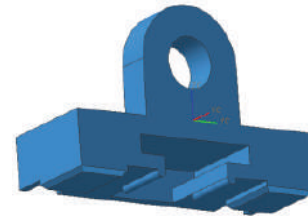
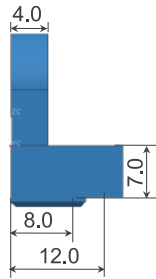
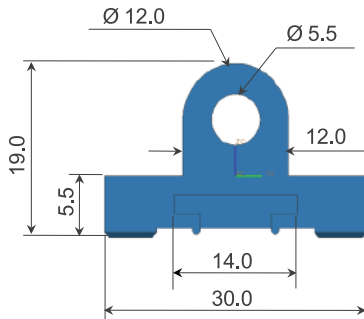
Part No.	Description	Application	Part Material & Color	Standard Packing Qty No.
APE-0013	Stud Mounting on M6 Stud	On M6 Stud mounting	PA6 (Black)	1000 Nos.



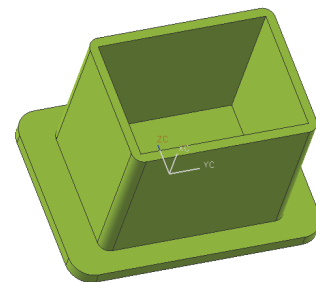
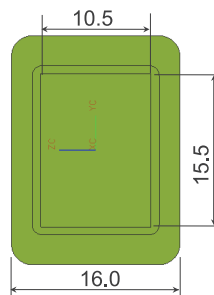
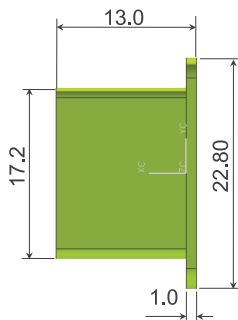
Part No.	Description	Application	Part Material & Color	Standard Packing Qty No.
APE-0017	Dummy Core/Cavity Plug	Relay Dummy Plug	PP(Black)	1000 Nos.



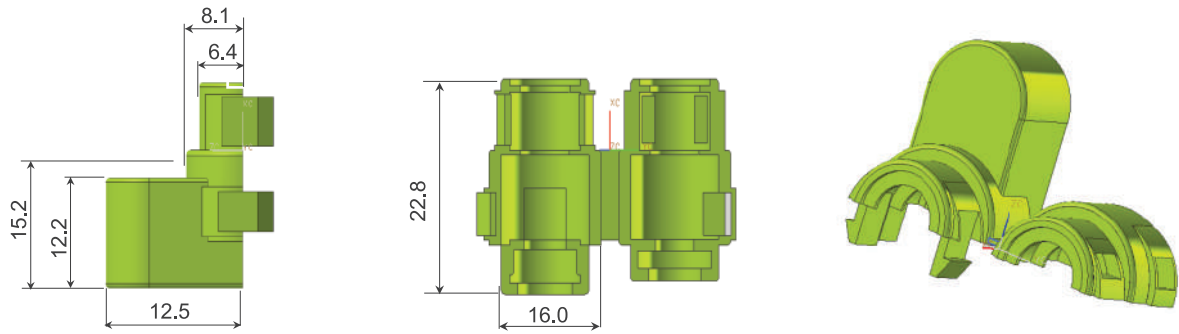
Part No.	Description	Application	Part Material & Color	Standard Packing Qty No.
APE-0018	Male Lock	Relay Mounting Clip	PA6 15% GF (Black)	500 Nos.



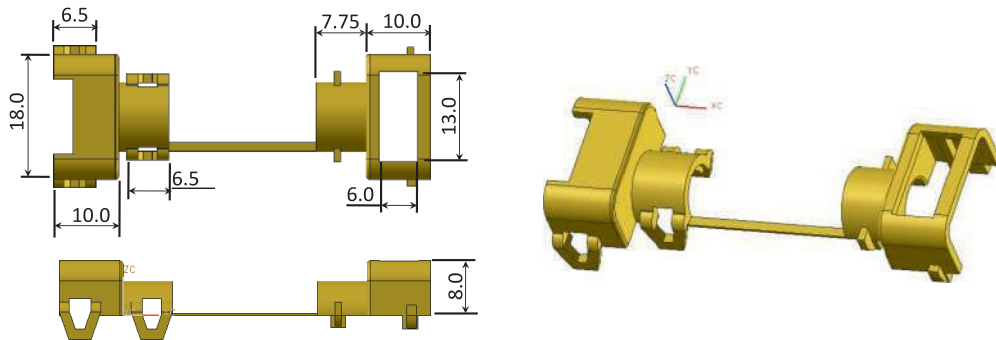
Part No.	Description	Application	Part Material & Color	Standard Packing Qty No.
APE-0019	Female Lock	Relay Mounting Clip	PA6 15% GF (Black)	500 Nos.



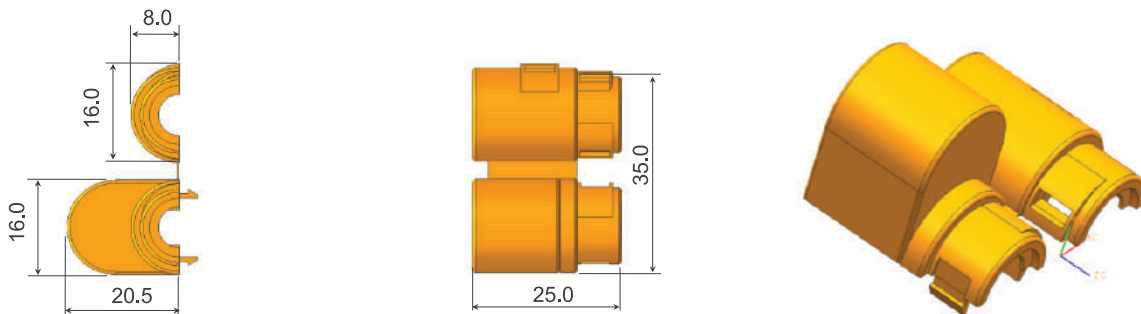
Part No.	Description	Application	Part Material & Color	Standard Packing Qty No.
APE-0020	JPT Front Cover	JPT Connector Plug	PP (Black)	1000 Nos.



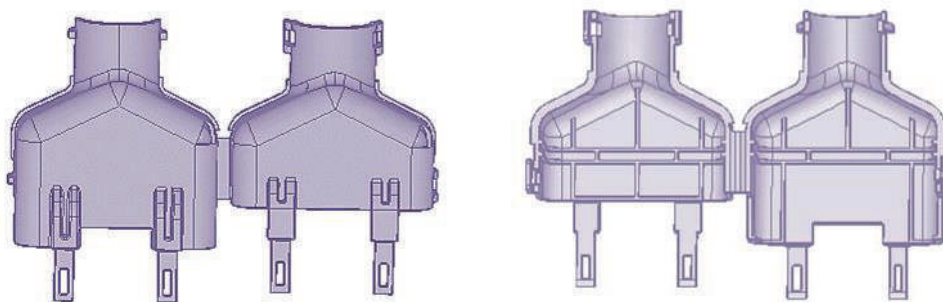
Part No.	Description	Application	Part Material & Color	Standard Packing Qty No.
APE-0022	Protect Cap For 2HP	Cord Tip Joint	PA6 (Black)	1000 Nos.



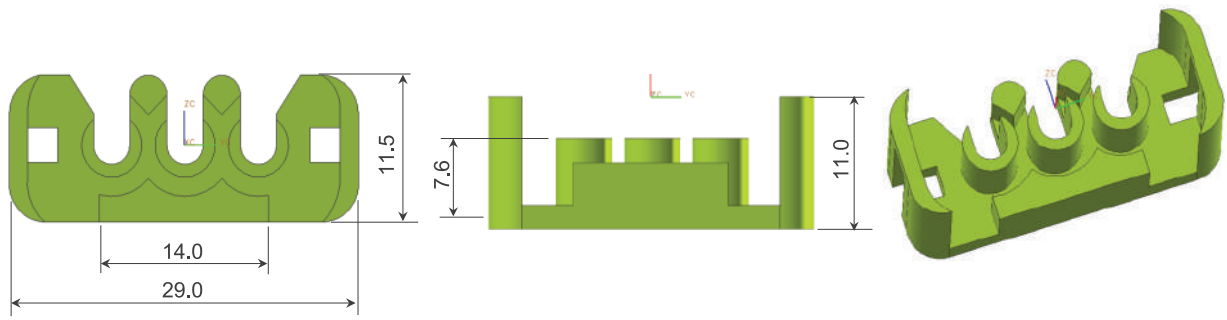
Part No.	Description	Application	Part Material & Color	Standard Packing Qty No.
APE-0023	Protect Cap For 2HPSG	Cord Tip Joint	PA6 (Black)	1000 Nos.



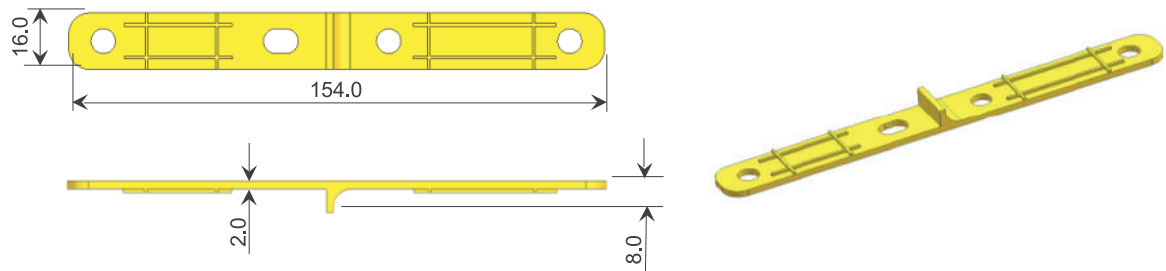
Part No.	Description	Application	Part Material & Color	Standard Packing Qty No.
APE-0024	Protect Cap For 4P	Cord Tip Joint	PA6 (Black)	1000 Nos.



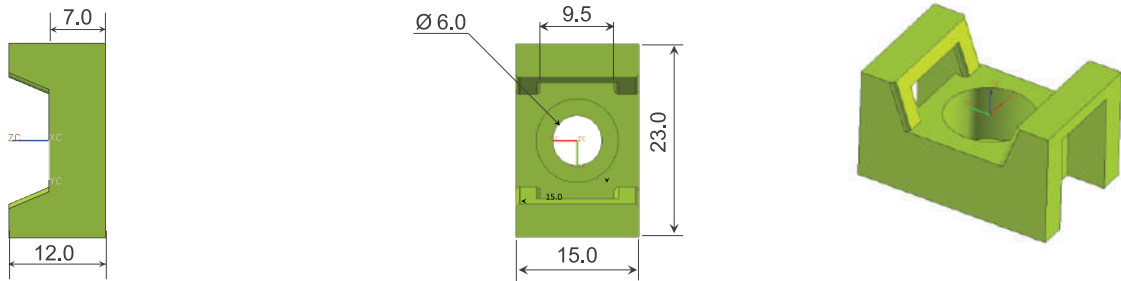
Part No.	Description	Application	Part Material & Color	Standard Packing Qty No.
APE-0025	Cover For 34P Connector	34 Pole Connector Cap	PA66 (Black)	75 Nos.



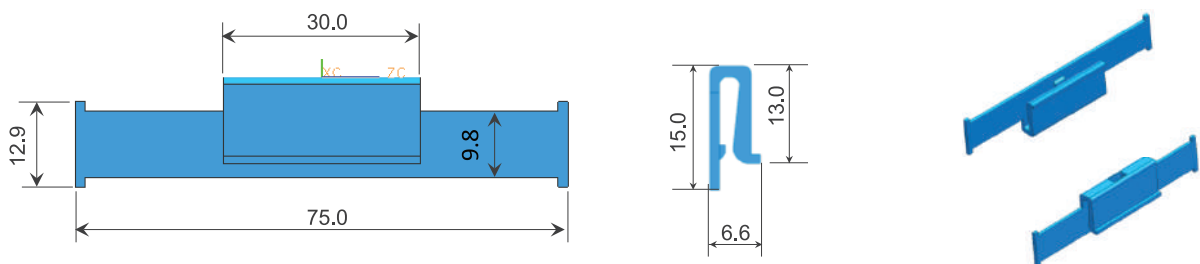
Part No.	Description	Application	Part Material & Color	Standard Packing Qty No.
APE-0027	Secondary Lock	Wire Harness	PA6 (White)	2000 Nos.



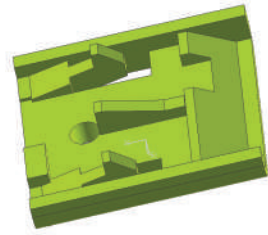
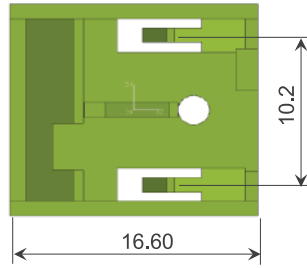
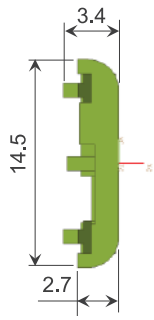
Part No.	Description	Application	Part Material & Color	Standard Packing Qty No.
APE-0028	Routine bracket	Wire Harness	PA6 (Black)	1000 Nos.



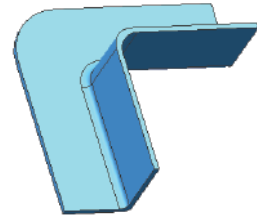
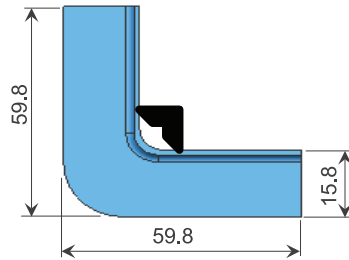
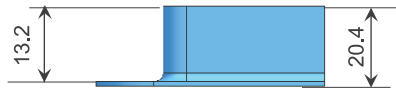
Part No.	Description	Application	Part Material & Color	Standard Packing Qty No.
APE-2009	Tie Mounting	Cable tie mounting	PA6 15% GF (Black)	2000 Nos.



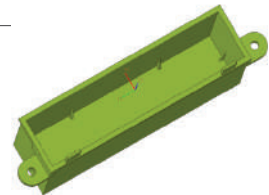
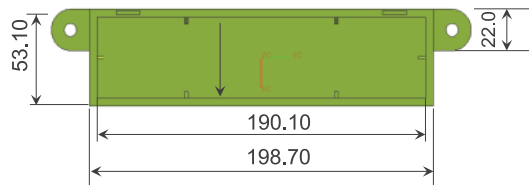
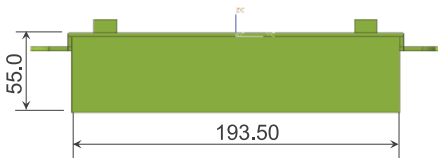
Part No.	Description	Application	Part Material & Color	Standard Packing Qty No.
APE-0030	Bracket Clip	Wire Harness	PP (Nat.)	3000 Nos.



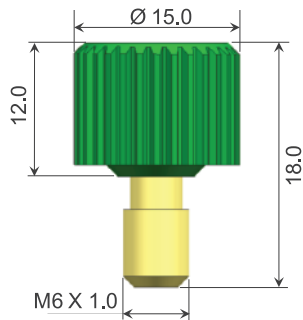
Part No.	Description	Application	Part Material & Color	Standard Packing Qty No.
APE-0037	3POLE HSG Secondary Lock	3 POLE HSG Secondary Lock	PA66 30% GF (Black)	2000 Nos.



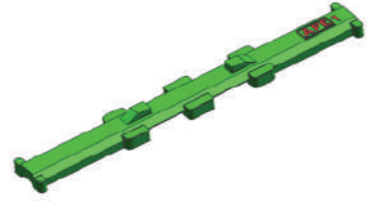
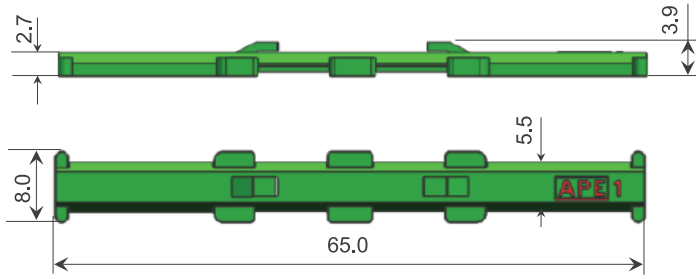
Part No.	Description	Application	Part Material & Color	Standard Packing Qty No.
APE-0039	L Bend	For cable Diversion	PP (Black)	500 Nos.



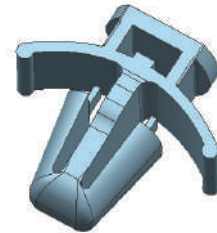
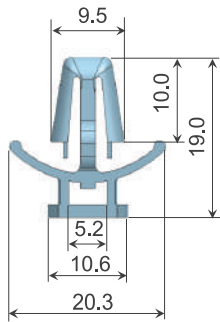
Part No.	Description	Application	Part Material & Color	Standard Packing Qty No.
APE-0040	Cover Floor	Cover	PP (Black)	60 Nos.



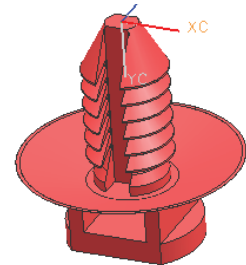
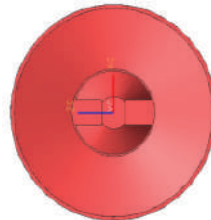
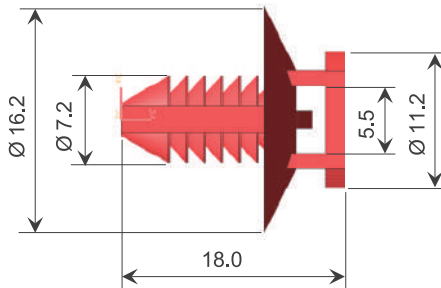
Part No.	Description	Application	Part Material & Color	Standard Packing Qty No.
APE-0040A	Knob M6 X 1.0	Clamping for Cover Flower	PA66 30%GF (Black)	500Nos.



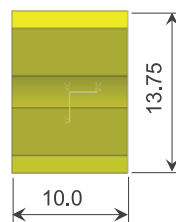
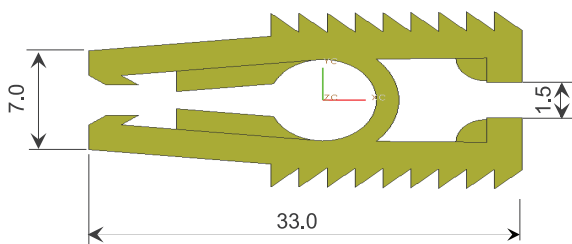
Part No.	Description	Application	Part Material & Color	Standard Packing Qty No.
APE-0042	SBT CLIP MATING HALF	Wire Harness	PA66 (Black)	1000 Nos.



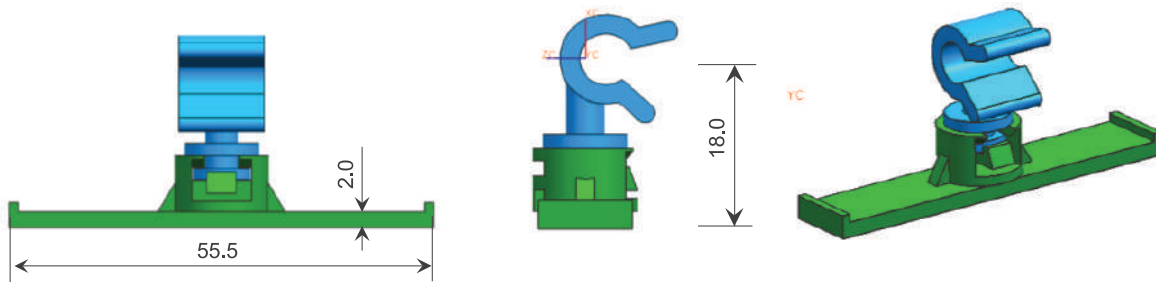
Part No.	Description	Application	Part Material & Color	Standard Packing Qty No.
APE-0043	Half Round Clip for 9.0mm Hole	Fitment hole size Ø8.5-9.0 & plate thickness 0.8-2.5mm	PP (Black)	1000 Nos.



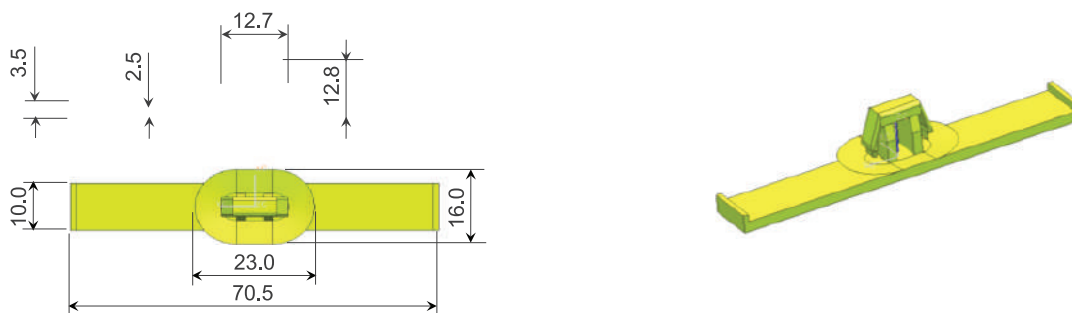
Part No.	Description	Application	Part Material & Color	Standard Packing Qty No.
APE-0044	Furr Tree Clip	Applicable with 150.0mm cable tie	PA66 (Black)	1000 Nos.



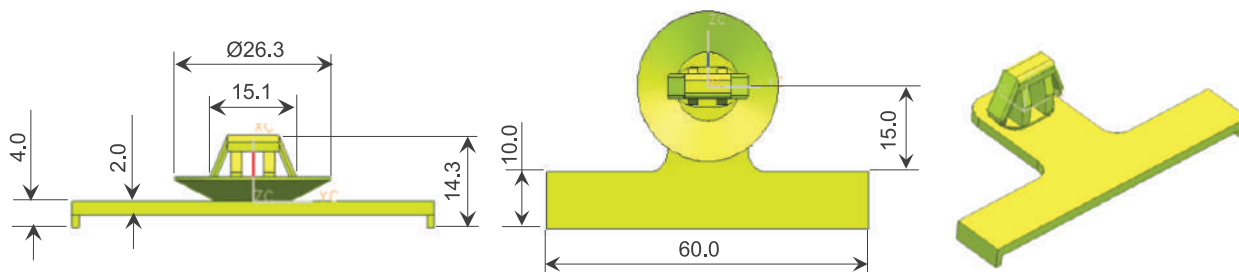
Part No.	Description	Application	Part Material & Color	Standard Packing Qty No.
APE-0045	Fuse Puller	Fuse Pulling	PP (Yellow)	2000 Nos.



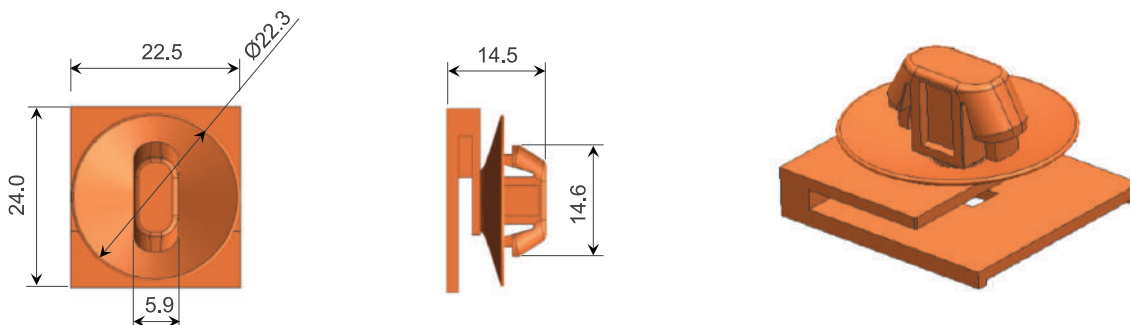
Part No.	Description	Application	Part Material & Color	Standard Packing Qty No.
APE-0046	Rotating Clip	Wiring Harness	PA66 (Black)	1000 Nos.



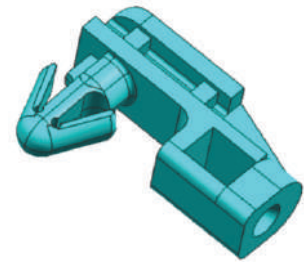
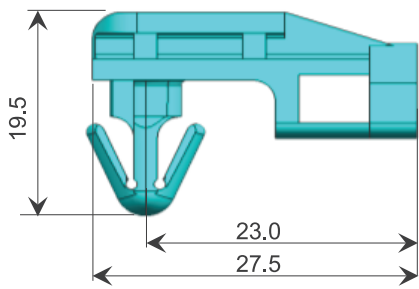
Part No.	Description	Application	Part Material & Color	Standard Packing Qty No.
APE-0047	Clip 70mm Oblong	7*12 Hole Clip	PLTC (Black)	60 Nos.



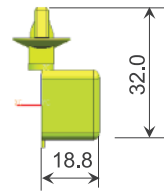
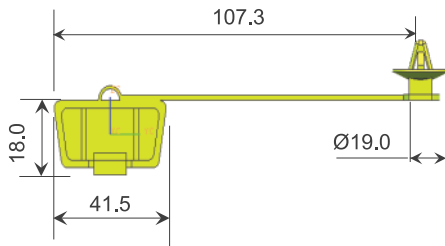
Part No.	Description	Application	Part Material & Color	Standard Packing Qty No.
APE-0048	Clip 60/30mm Oblong	7*12 Hole Clip	PP (Black)	1000 Nos.



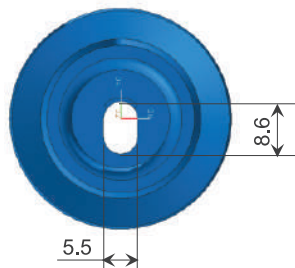
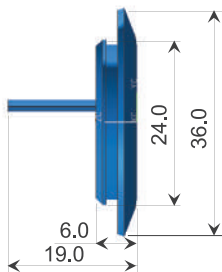
Part No.	Description	Application	Part Material & Color	Standard Packing Qty No.
APE-0051	Oval Clip	Ø 7.0 X 12.0 mm Hole	PA6 (Gray)	1000 Nos.



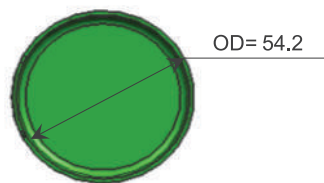
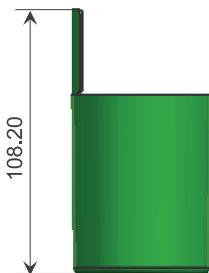
Part No.	Description	Application	Part Material & Color	Standard Packing Qty No.
APE-0052	Bracket clip	Wire Harness	POM (Black)	1000 Nos.



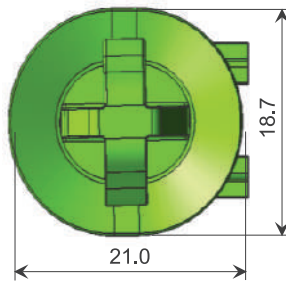
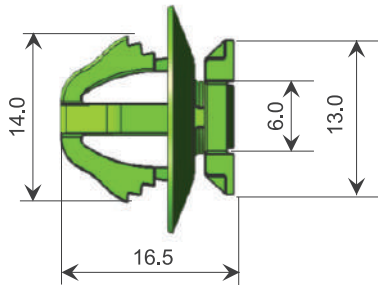
Part No.	Description	Application	Part Material & Color	Standard Packing Qty No.
APE-0054	Diagnostic cover with cable tie	6.5-7.5 mm Hole	PP(Black)	1000 Nos.



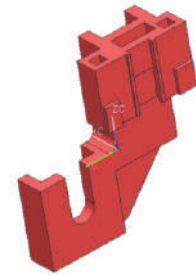
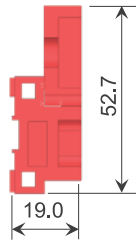
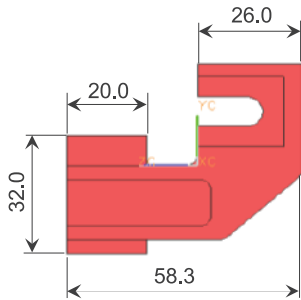
Part No.	Description	Application	Part Material & Color	Standard Packing Qty No.
APE-0056	Grommet	Automotive Wire Harness	LDPE (Black)	200 Nos.



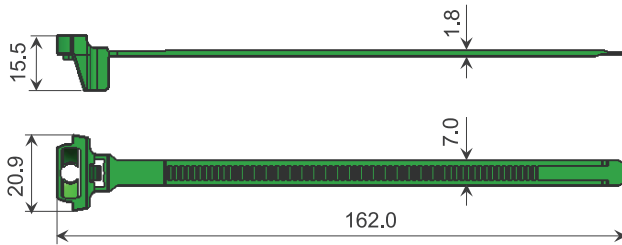
Part No.	Description	Application	Part Material & Color	Standard Packing Qty No.
APE-0059	Cable Cap	Using for wire harness	PP(Natural,Pink, Blue, Yellow)	150 Nos.



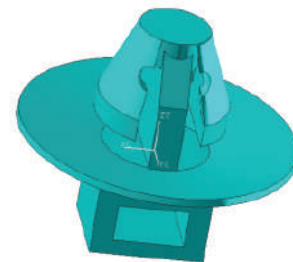
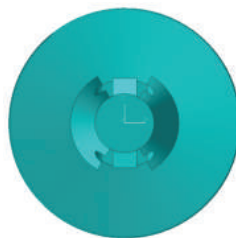
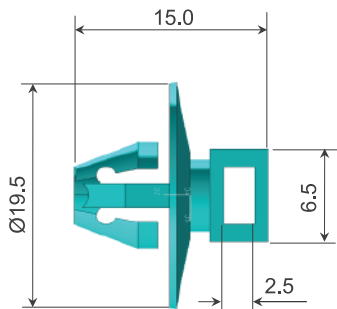
Part No.	Description	Application	Part Material & Color	Standard Packing Qty No.
APE-0060	Roof Clip Oval Shape	Use in Interfaces connector	PA66(Black)	1000 Nos.



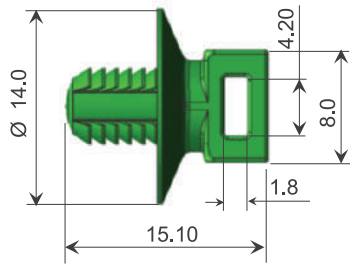
Part No.	Description	Application	Part Material & Color	Standard Packing Qty No.
APE-0061	Bracket Dual Relay	To be assembly with the window winding relay	PA6(Black)	250 Nos.



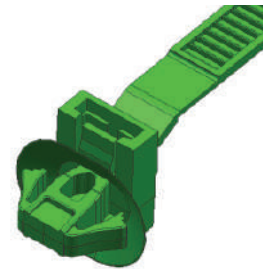
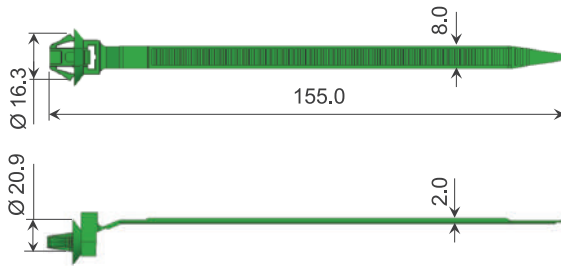
Part No.	Description	Application	Part Material & Color	Standard Packing Qty No.
APE-0062	Stud Clip	Applicable wire harness Ø5.0 TO 30.0mm	PA66/PA6 (Natural)	1000 Nos.



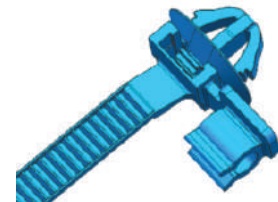
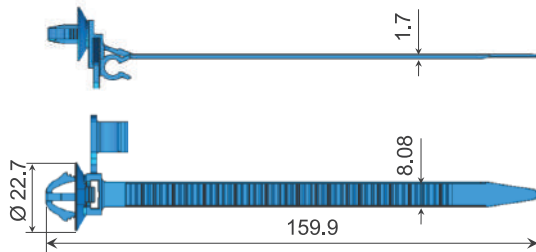
Part No.	Description	Application	Part Material & Color	Standard Packing Qty No.
APE-0063	Push Mount Rivet Tie	To be assembly with 150.0mm cable tie	PA66(Black)	1000 Nos.



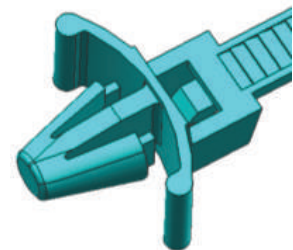
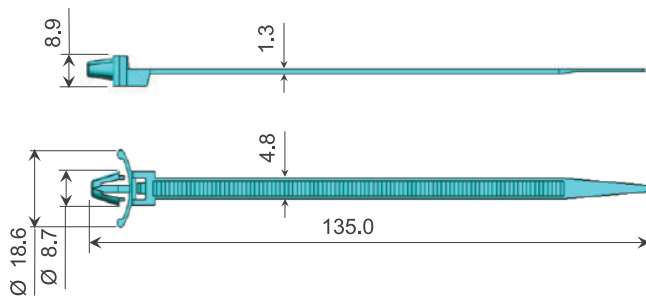
Part No.	Description	Application	Part Material & Color	Standard Packing Qty No.
APE-0064	Clip for M6 Weld nut	To be assembly with 150.0 mm cable tie	PA66(Black)	1000 Nos.



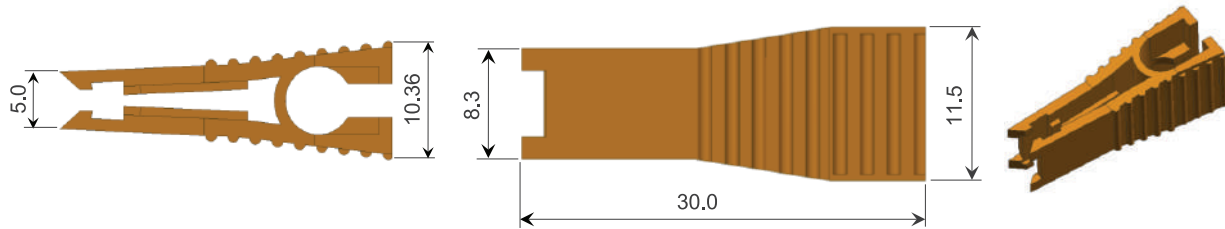
Part No.	Description	Application	Part Material & Color	Standard Packing Qty No.
APE-0065	Oval Clip with cable tie	Wiring Harness	PP(Black)	1000 Nos.



Part No.	Description	Application	Part Material & Color	Standard Packing Qty No.
APE-0067	Two Way Clip	Wiring Harness	PA6(Black)	1000 Nos.



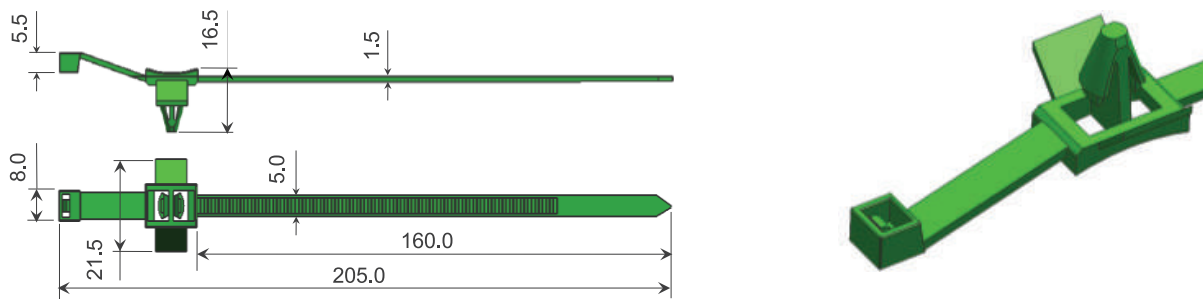
Part No.	Description	Application	Part Material & Color	Standard Packing Qty No.
APE-0068	Half Round Clip-135 mm	Wiring Harness	PA66 (Black)	1000 Nos.



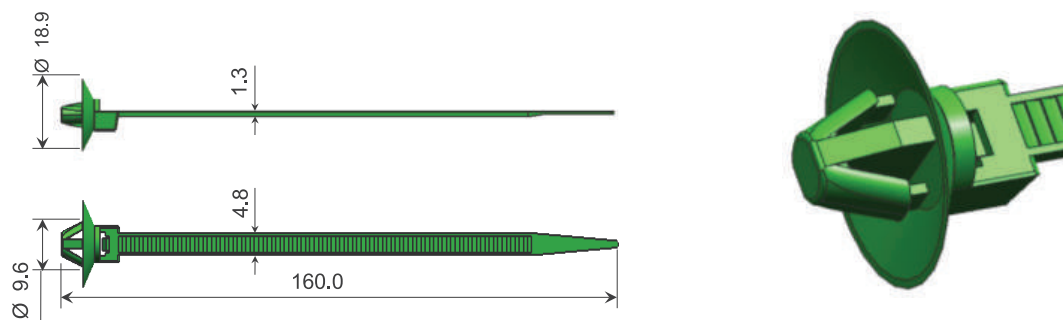
Part No.	Description	Application	Part Material & Color	Standard Packing Qty No.
APE-0070	Fuse puller	Fuse Pulling	PP (white)	2000 Nos.



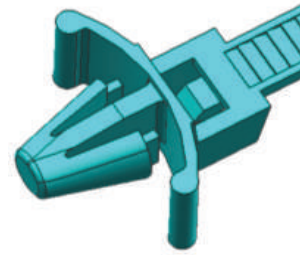
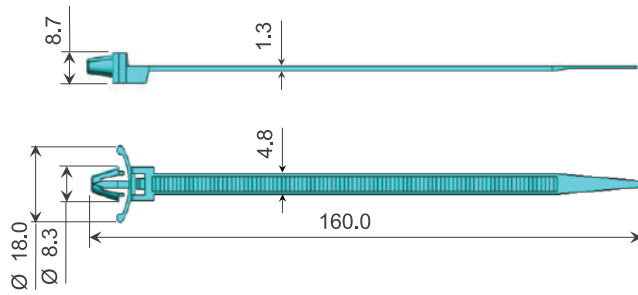
Part No.	Description	Application	Part Material & Color	Standard Packing Qty No.
APE-0071	Fur Clip	Fitment with M5 Stud	PA66 (Black)	2000 Nos.



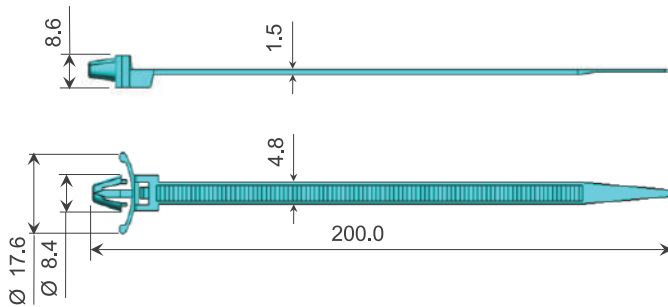
Part No.	Description	Application	Part Material & Color	Standard Packing Qty No.
APE-0072	Central Clip	Wiring Harness	PA66 (Black)	2000 Nos.



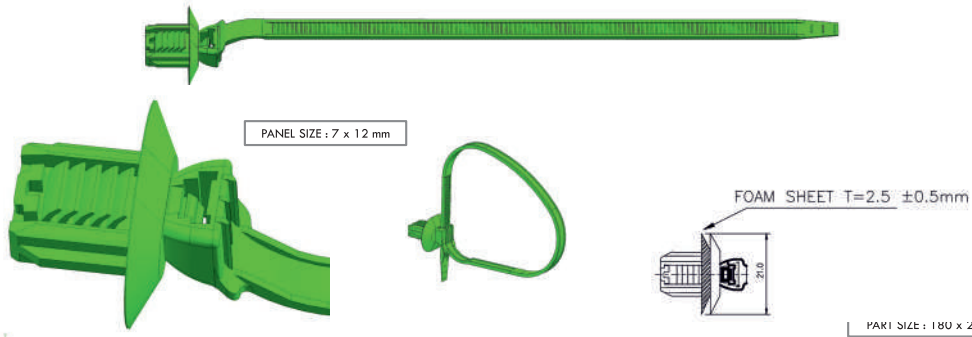
Part No.	Description	Application	Part Material & Color	Standard Packing Qty No.
APE-0073	66 Clip 160.0mm	Wiring Harness	PA66 (Black)	2000 Nos.



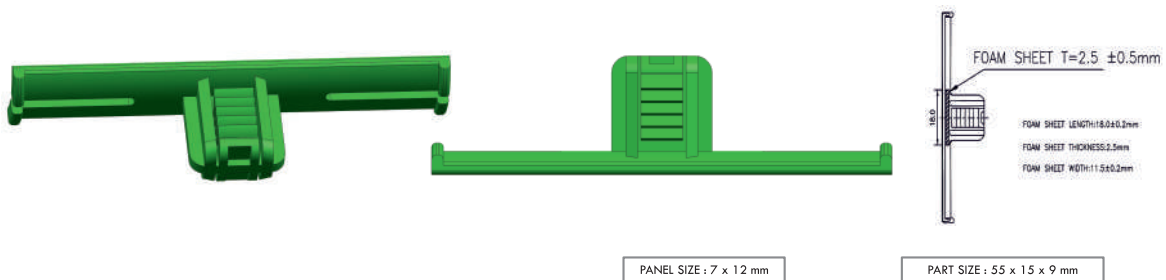
Part No.	Description	Application	Part Material & Color	Standard Packing Qty No.
APE-0074	Half Round Clip-160mm	Wiring Harness	PA66 (Black)	2000 Nos.



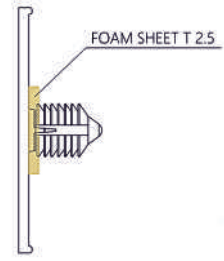
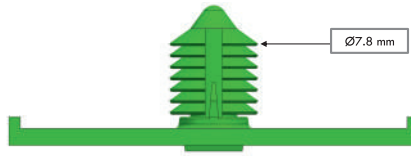
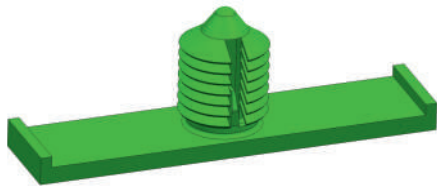
Part No.	Description	Application	Part Material & Color	Standard Packing Qty No.
APE-0075	Half Round Clip-200mm	Wiring Harness	PA66 (Black)	2000 Nos.



Part No.	Description	Application	Part Material & Color	Standard Packing Qty No.
APE-0125 / APE-0149	222 CLIP (7 x12 FURR CLIP)	Wiring Harness	PA66 (Black)	2000 Nos.

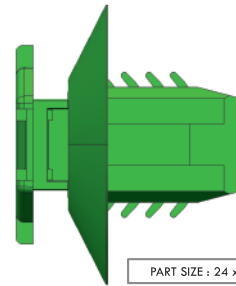
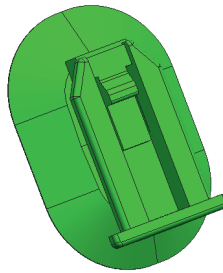
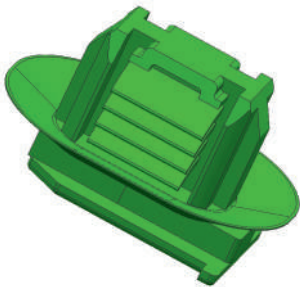


Part No.	Description	Application	Part Material & Color	Standard Packing Qty No.
APE-0126	223 CLIP WITH FOAM	Wiring Harness	PA66 (Black)	2000 Nos.



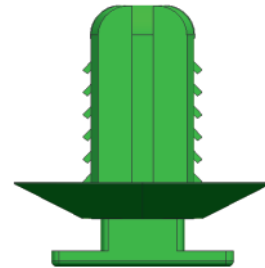
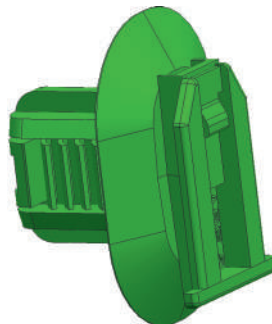
PART SIZE : 36 x 13 x 8 mm

Part No.	Description	Application	Part Material & Color	Standard Packing Qty No.
APE-0127	224 CLIP WITH FOAM D6.5	Wiring Harness	PA66(Black)	2000 Nos.



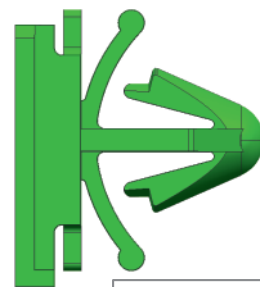
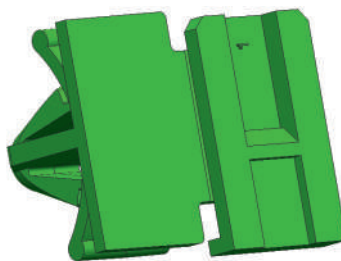
PART SIZE : 24 x 17 x 14 mm

Part No.	Description	Application	Part Material & Color	Standard Packing Qty No.
APE-7189	Mounting Clip Hole Dia 8x15 B	Wiring Harness	PA66 (Black)	2000 Nos.



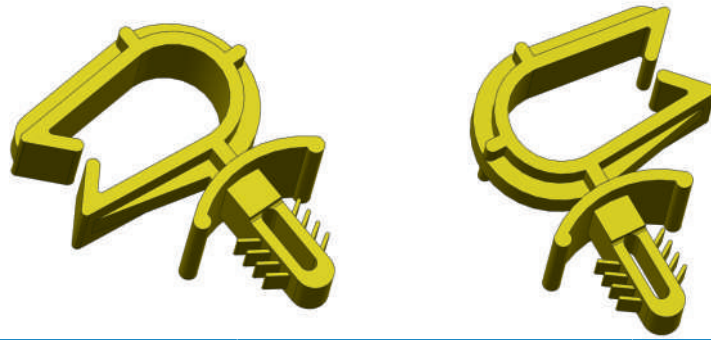
PART SIZE : 24 x 18 x 17 mm

Part No.	Description	Application	Part Material & Color	Standard Packing Qty No.
APE-7236	Super Seal 7 X 12 Clip	Wiring Harness	PA66 (Black)	2000 Nos.



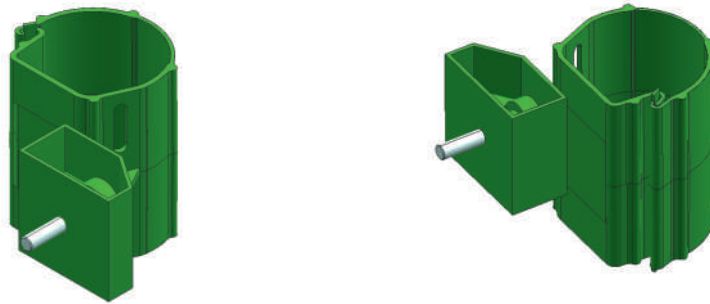
PART SIZE : 22 x 19 x 17 mm

Part No.	Description	Application	Part Material & Color	Standard Packing Qty No.
APEFG00725	Connecting Mounting Clip	Wiring Harness	Pa66 (Natural)	2000 Nos.



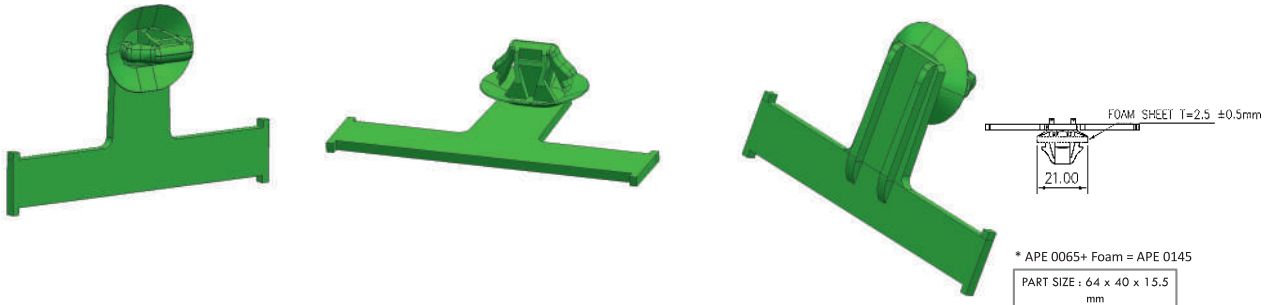
PART SIZE : 33 x 24 x 12 mm

Part No.	Description	Application	Part Material & Color	Standard Packing Qty No.
APEFG120051	Cable Clamp	Wiring Harness	PA66 (Black)	2000 Nos.



PART SIZE : 118 x 105 x 111 mm

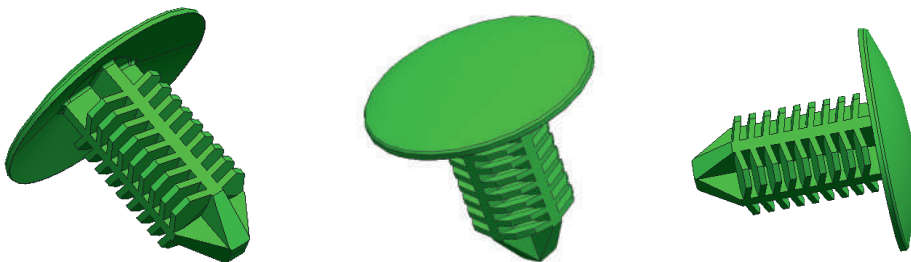
Part No.	Description	Application	Part Material & Color	Standard Packing Qty No.
APE-0143	Channel FR WH 96 x 65	Wiring Harness	PA66 (Black)	38 Nos.



* APE 0065+ Foam = APE 0145

PART SIZE : 64 x 40 x 15.5 mm

Part No.	Description	Application	Part Material & Color	Standard Packing Qty No.
APE-0145	Clamp With Foam	Wiring Harness	PP (Black)	1000 Nos.



* Fastening hole $\varnothing 7 \pm 0.1-0.2$

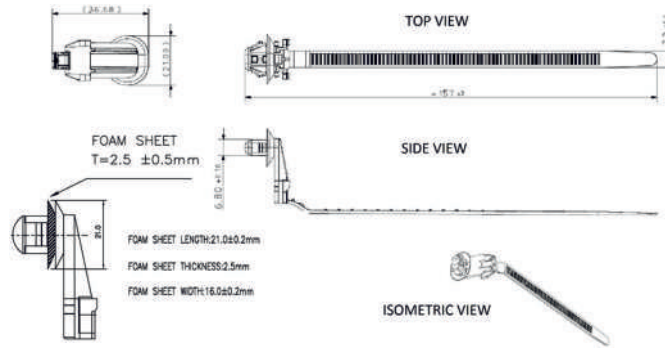
* Using Condition

* Scale: 1:1

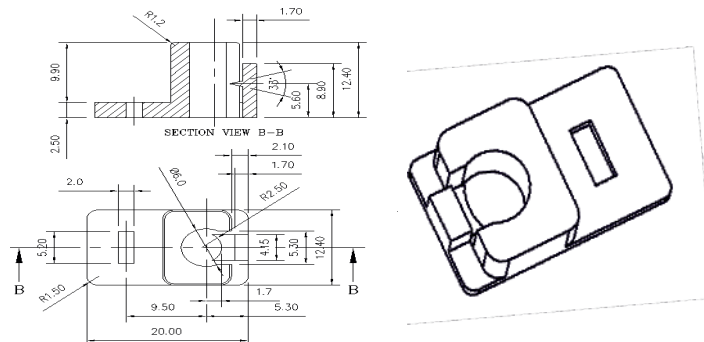
* Fastening thickness 1.9 to 8

PART SIZE : $\varnothing 18 \times 18$ mm

Part No.	Description	Application	Part Material & Color	Standard Packing Qty No.
APE-0147	Snap Fit Clip	Wiring Harness	PA 6 (BLACK)	2000 Nos.



Part No.	Description	Application	Part Material & Color	Standard Packing Qty No.
APE-0136	CC Mounting Clip BØ7x12mm	Wire Harness	PP	1000 Nos.



Part No.	Description	Application	Part Material & Color	Standard Packing Qty No.
APE-0139	Stud Mountable Head With Cable Tie	Wire Harness	PA 66 (Black)	1000 Nos.

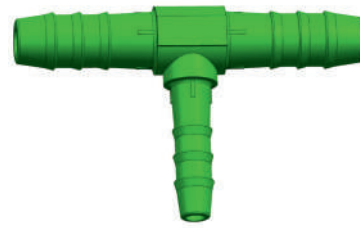
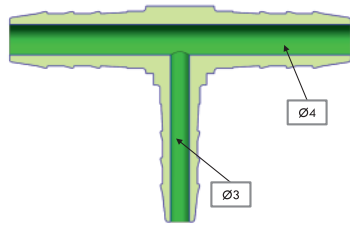


Part No.	Description	Application	Part Material & Color	Standard Packing Qty No.
APE-4019	MTG Trim			1000 Nos.



PART SIZE : 25 x 20.5 x 5.5 mm

Part No.	Description	Application	Part Material & Color	Standard Packing Qty No.
APE-3017	Twist Lock Clip	Wire Harness	PA 66 (White)	2000 Nos.



PART SIZE : 45 x 28.5 x 9 mm

Part No.	Description	Application	Part Material & Color	Standard Packing Qty No.
APE-4024	T-Connector	Automotive	POM (White)	1000 Nos.

- APE-0101 :- 2.5 X 100 MM CABLE TIE BLACK
- APE-0102 :- 2.5 X 100 MM CABLE TIE WHITE
- APE-0103:-3.6 X 150 MM CABLE TIE BLACK
- APE-0104:- 3.6 X 150 MM CABLE TIE WHITE
- APE-0105:- 4.8 X 200 MM CABLE TIE BLACK
- APE-0106:- 4.8 X 200 MM CABLE TIE WHITE



INJECTION MOULDING : Our Core Strength

Our Facility is equipped with world class 30 injection moulding machines with capacity ranging from 6T to 250T. Additionally we have 4 vertical injection moulding machines.



Suzhou Lizu (Vertical)



JSW (All Electric)



Fanuc (All Electric)



Engel (vertical)



Engel



INHOUSE Tool Room

Heart of Manufacturing Activities..

Our in-house Tool Room spread over 10000 sqft facility gives us an edge over our competitors as we can offer customised products to our customers and can continue to experiment with newer designs. This strength has kept our R & D efforts going and today we are able to supply 300 different products to our customers.



MISTUBISHI CNC EDM



MITSUBISHI Wire Cut EDM



HAAS VMC



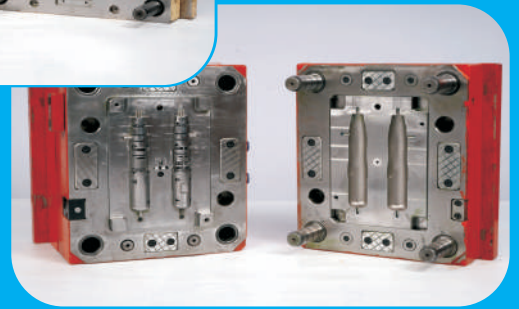
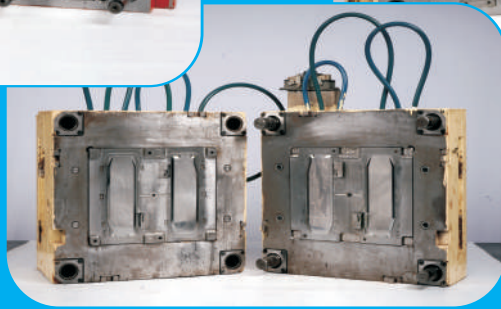
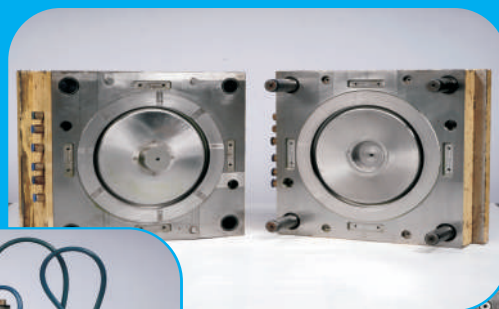
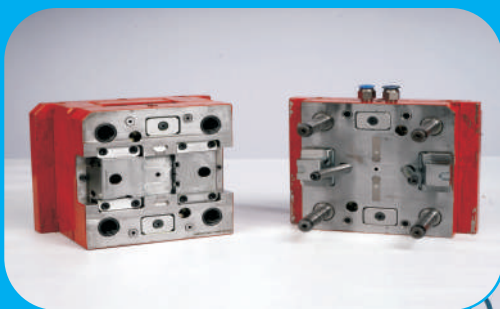
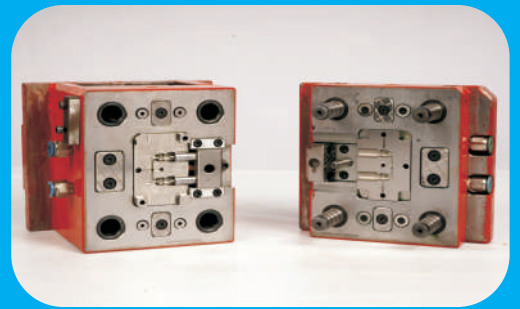
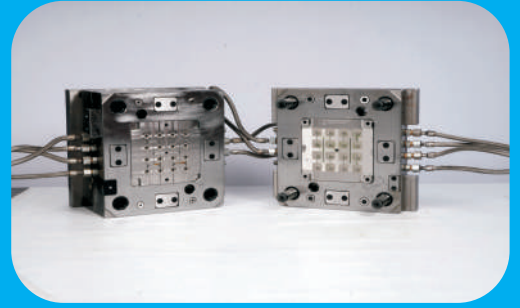
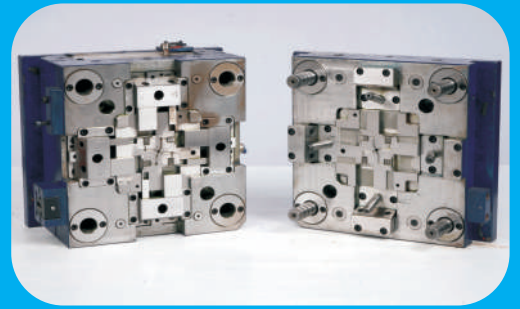
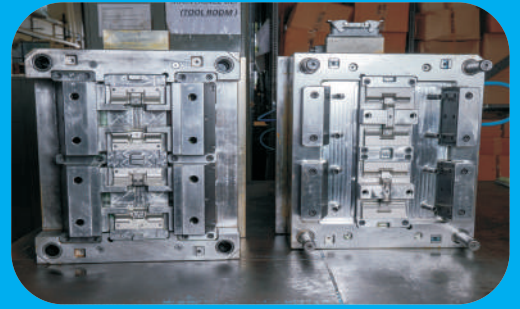
MAKINO VMC



CNC LATHE



SURFACE GRINDER



Contact Us

+91 8600003276
vinayak.jadhav@anilplastics.com

+91 8888804438
marketing@anilplastics.com

+91 9689937183
marketing1@anilplastics.com