



ANIL PLASTICS AND ENTERPRISES

Since 1994

Plastic Injection Mould Manufacturer & Plastic Moulding



Plot no 16,S.No 253/1/3,
Tirumala Ind Estate Hinjewadi
Pune. India- 411057



VISION & MISSION



VISION

We at Anil Plastics Committed for Assured quality, prompt and efficient delivery, highly competitive price in our range of injection moulded plastic components and moulds.

MISSION

At APE we re-define rules of business and are adding a new edge to reach customer expectation aiming for customer delight.





PLANTS OVERVIEWS



Warje Plant – 1994 to 2010



Hinjewadi Plant 1 – 2010



Hinjewadi Plant 2- 2018

Tool Room

Injection Moulding



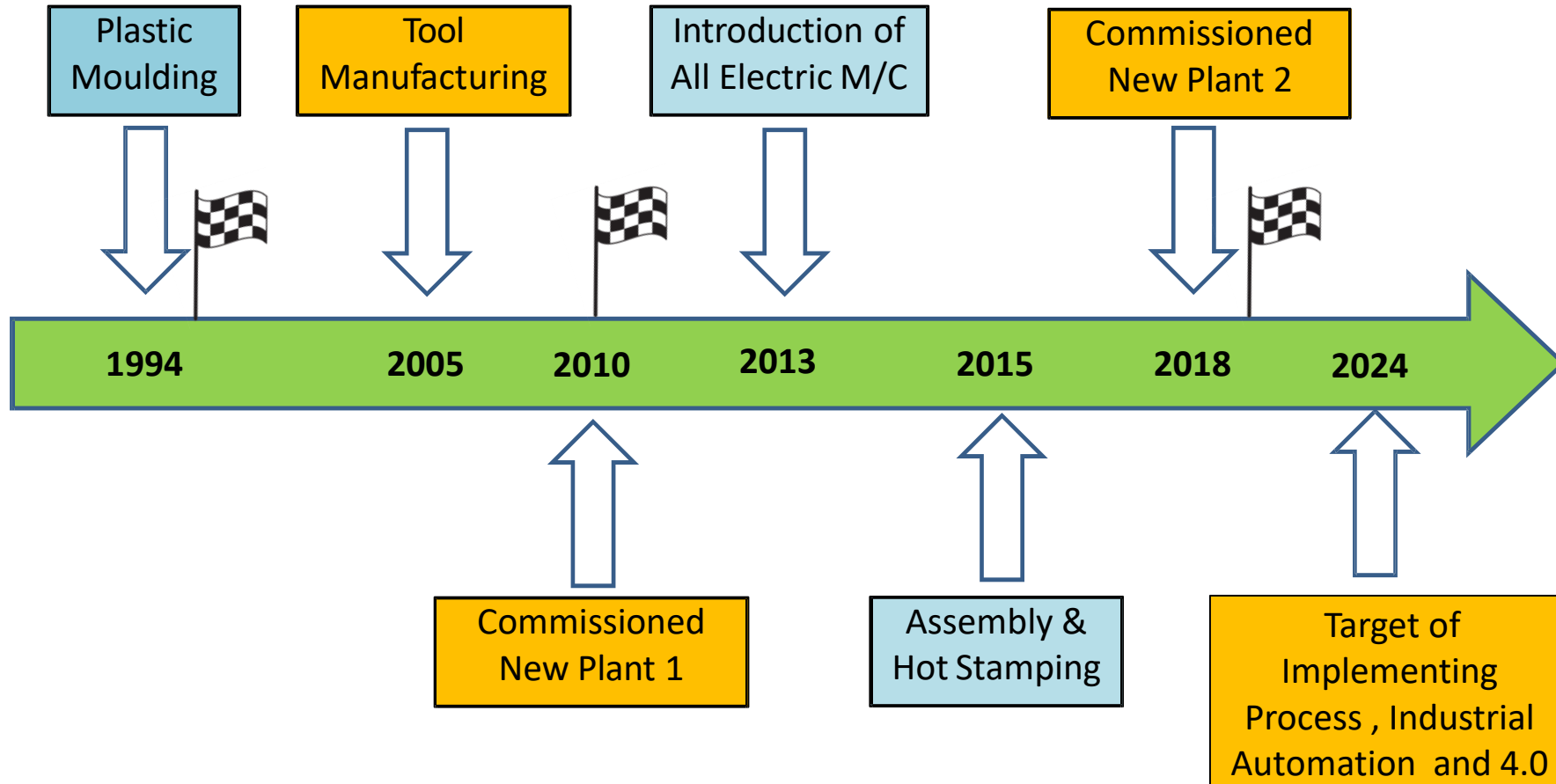
PLANT - 2



- Total Area: 4,800 Sq Mtr
- Operational Area: 2,350 Sq Mtr
- High Tech Facility
- Operational from June-18



HISTORY & MILESTONES





CERTIFICATIONS

QMS/EMS/OHSAS



DNV·GL

MANAGEMENT SYSTEM CERTIFICATE

Certificate No.: 112850-2012-AQ-IND-IATF Valid until: 28 February, 2018 - 28 February, 2021
 IATF Certificate No.: 0291981

This is to certify that the management system of

ANIL PLASTICS & ENTERPRISES


Plot No. 16, S. No. 253/2/3, Tirumala Ind. Estate, Behind Filtrum Tools, Hinjewadi, Pune 411 057, Maharashtra, India
 and, if applicable, the remote support locations as mentioned in the Appendix accompanying this Certificate


has been found to conform to quality management system standard:
IATF 16949:2016

This certificate is valid for the following Scope:
MANUFACTURING OF PLASTICS COMPONENTS AND ASSEMBLIES

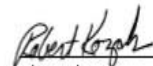
EXCLUSION: 8.3 PRODUCT DESIGN

Place and date:
Katy, TX, 27 February 2018






For the issuing office:
DNV GL - Business Assurance
Pune, India



Robert Kozak
Management Representative

Lack of fulfillment of conditions as set out in the Certification Agreement may render this Certificate invalid.
 ACCREDITED UNIT: DNV GL - Business Assurance, 1400 Ravenna Drive, Katy, TX 77449, Tel: 281-386-4000, www.dnvgl.com

Page 1 of 1



MANAGEMENT SYSTEM CERTIFICATE

Certificate no.: C86168 Initial certification date: 06 January 2023 Valid: 06 January 2023 - 05 January 2026

This is to certify that the management system of


Anil Plastics & Enterprises



S. No. 253/1, Tirumala Industrial Estate, Behind Filtrum Tool, Phase II, Hinjewadi, Mulshi, Pune - 411057, Maharashtra, India

has been found to conform to the Environmental Management System standard:
ISO 14001:2015


This certificate is valid for the following scope:
Manufacturing of Plastic Components and Assemblies

Place and date:
Chennai, 06 January 2023







For the issuing office:
DNV - Business Assurance
ROMA No. 9, GST Road, Alondor, Chennai - 600 076, India



Sandipan Madhyasth
Management Representative

Lack of fulfillment of conditions as set out in the Certification Agreement may render this Certificate invalid.
 ACCREDITED UNIT: DNV Business Assurance N.V., Zandweg 1, 3720 LR, Maarssen, The Netherlands - TEL: +31 (0) 20 228 2800, www.dnv.com/assurance



MANAGEMENT SYSTEM CERTIFICATE

Certificate no.: C86167 Initial certification date: 06 January 2023 Valid: 06 January 2023 - 05 January 2026

This is to certify that the management system of


Anil Plastics & Enterprises



S. No. 253/1, Tirumala Industrial Estate, Behind Filtrum Tool, Phase II, Hinjewadi, Mulshi, Pune - 411057, Maharashtra, India

has been found to conform to the Occupational Health and Safety Management System standard:
ISO 45001:2018


This certificate is valid for the following scope:
Manufacturing of Plastic Components and Assemblies

Place and date:
Barendrecht, 06 January 2023



For the issuing office:
DNV - Business Assurance
Zandweg 1, 3994 LB, Barendrecht, Netherlands



Ste Niek
Management Representative

Lack of fulfillment of conditions as set out in the Certification Agreement may render this Certificate invalid.
 ACCREDITED UNIT: DNV Business Assurance N.V., Zandweg 1, 3720 LR, Maarssen, The Netherlands - TEL: +31 (0) 20 228 2800, www.dnv.com/assurance

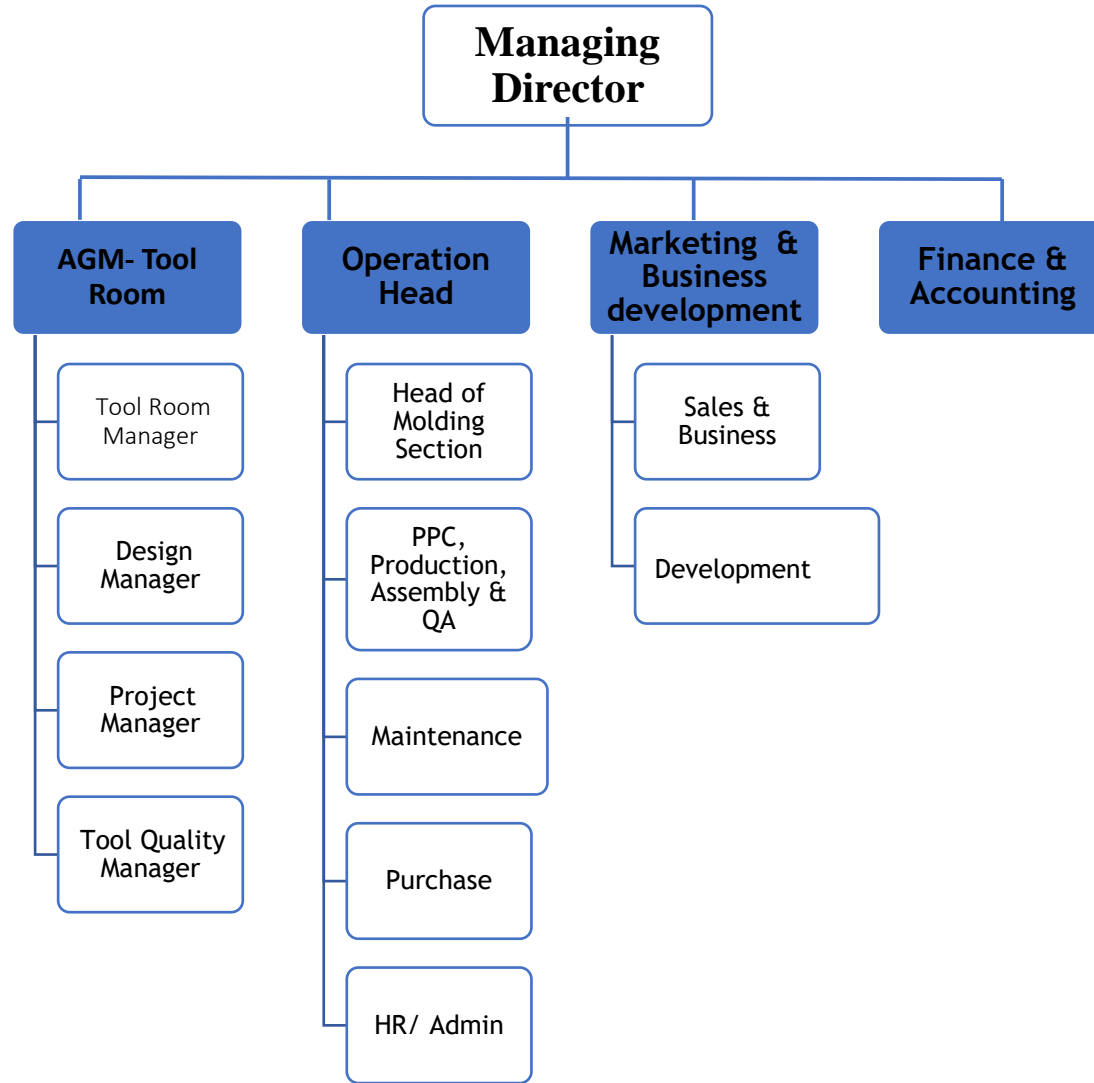
IATF 16949-2016

ISO 14001-2015

ISO 45001-2018

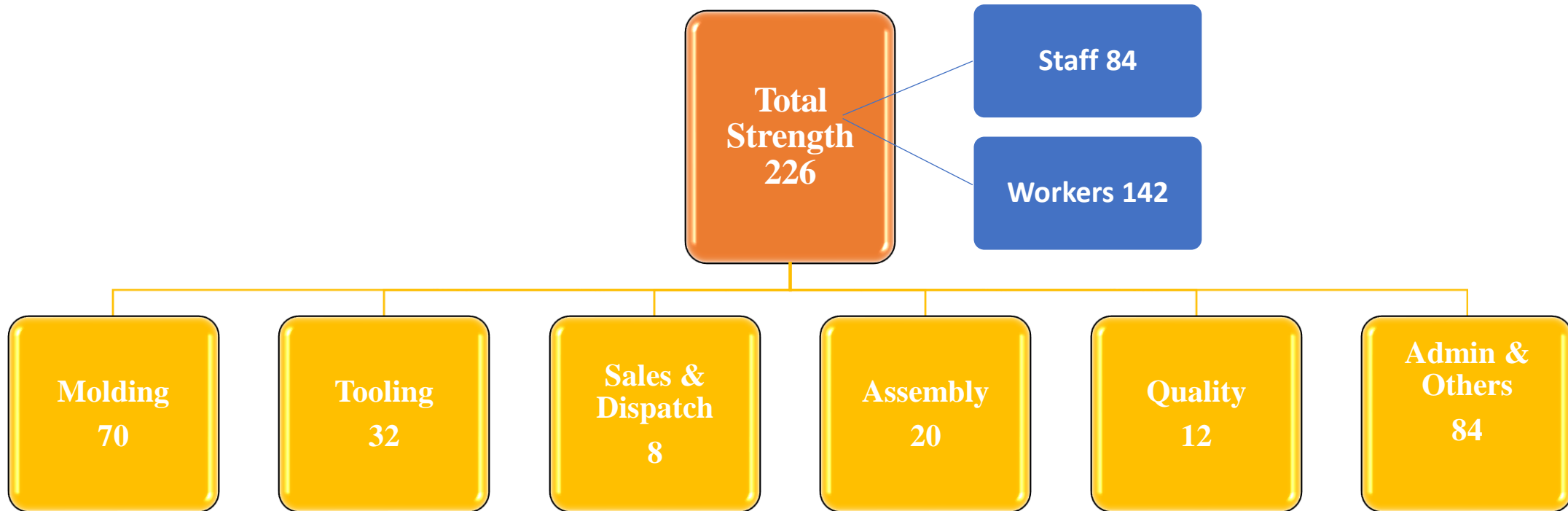


ORGANIZATIONAL CHART





TOTAL STRENGTH DEPARTMENT WISE

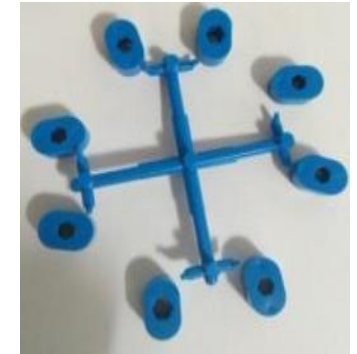




BUSINESS OFFERINGS



1. Over Moulding
2. Technical Moulding
3. Metal – Plastic Insert Moulding
4. Miniature Moulding
5. Assembly of Plastic + Metal components
6. Product Design & Development
7. Ultrasonic Welding
8. Tooling.



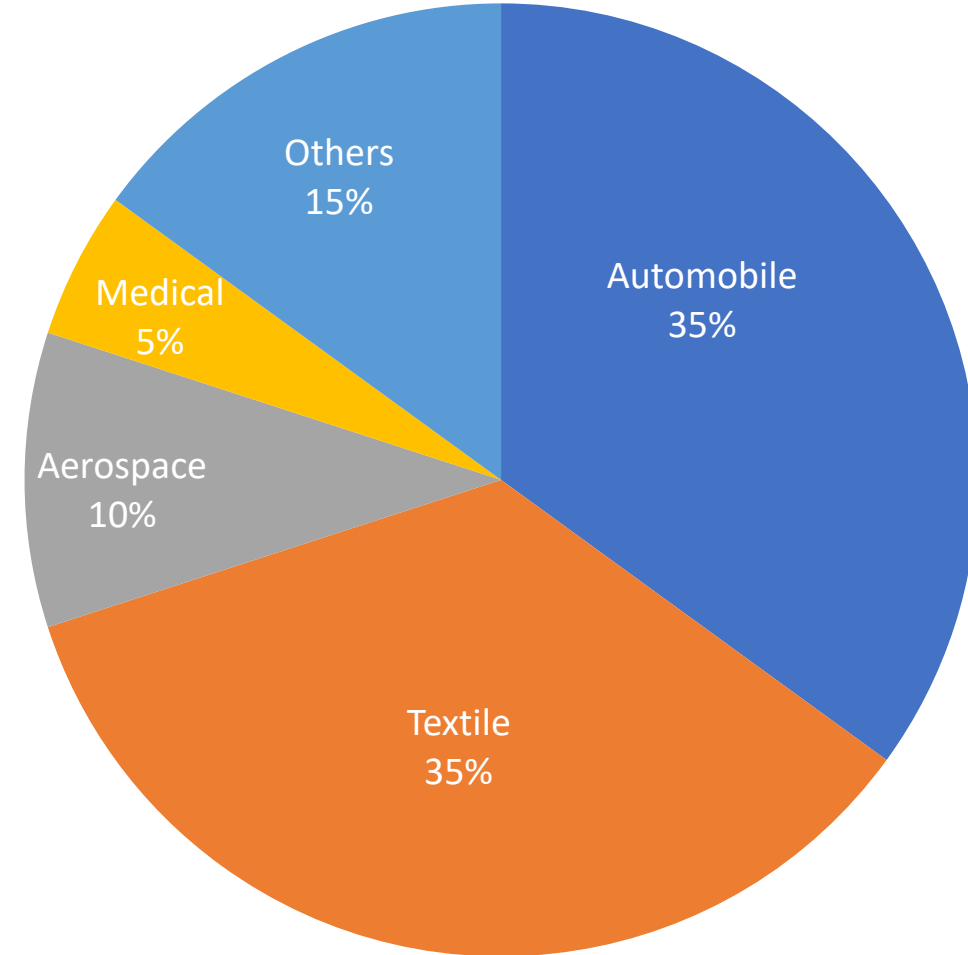


OUR CUSTOMERS FROM



We Export to

- Schaeffler – Thailand
- Curtis Instruments – Bulgaria
- Williams Control - China
- Williams Control – USA
- Kubler – Germany
- AQ Wiring System – Lithuania UAB
- Rosenberger- China
- Erling Klinger -Brazil
- Cutis Instruments – USA

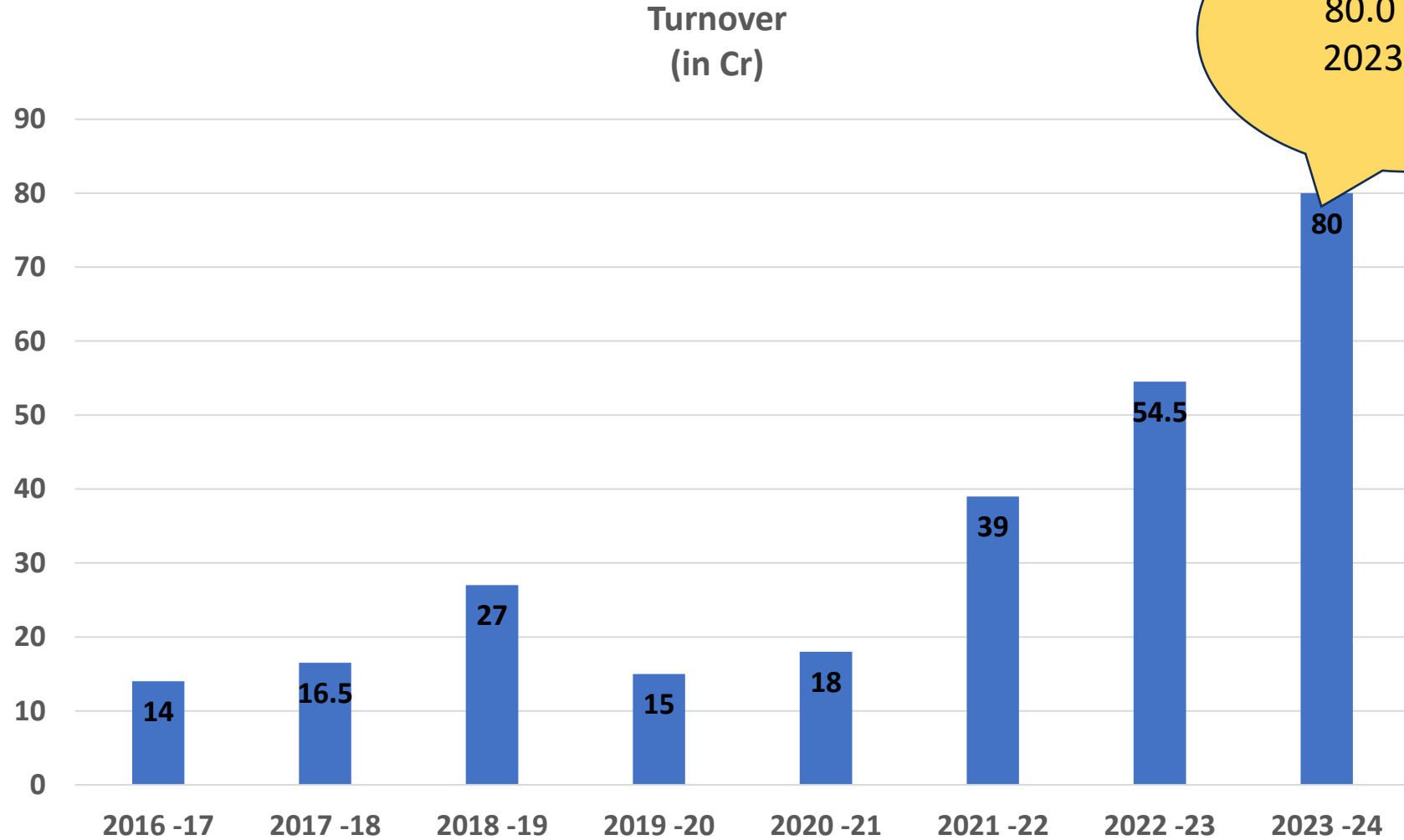




OUR GROWTH



Overall Turnover



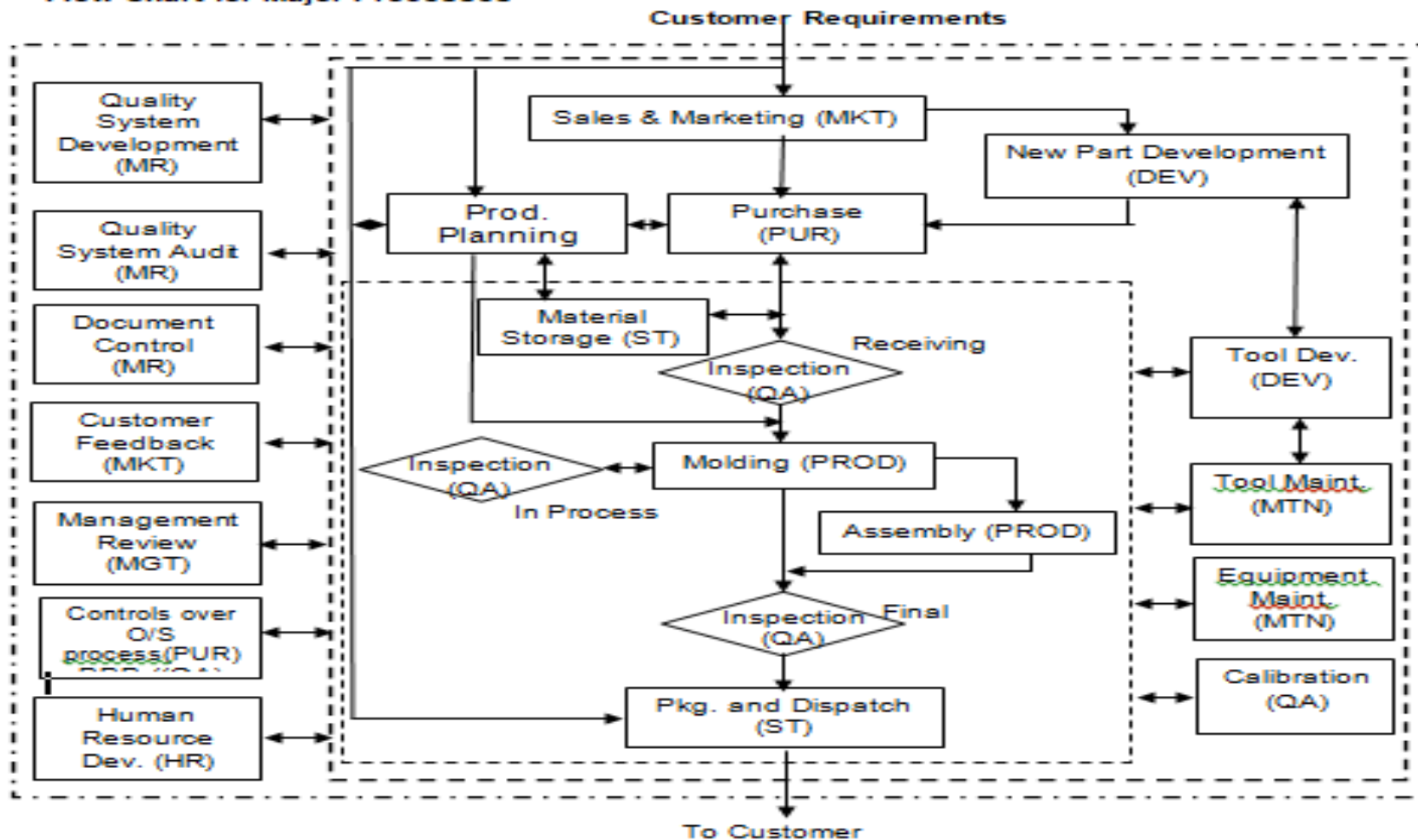
Targeting INR
80.0 Cr for
2023-2024



QMS SYSTEM



Flow Chart for Major Processes-



- - - - - In House Production Processes
- - - - - Business Processes
- - - - - Quality System Processes



MANUFACTURING PROCESS



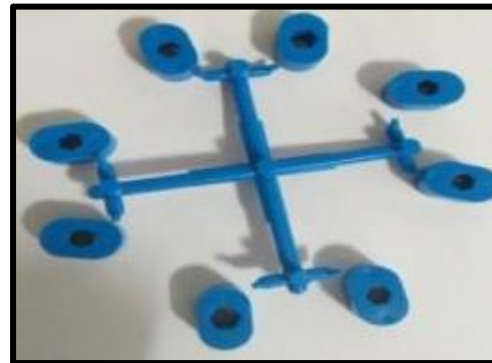
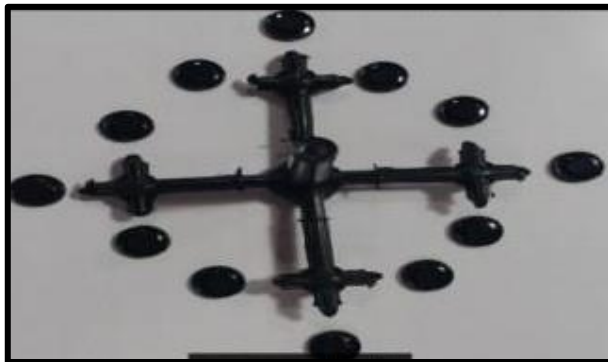
OVER MOULDING



INSERT MOULDING



TECHNICAL MOULDING



MICRO MOULDING





INSERT MOULDED PARTS



Brass Insert



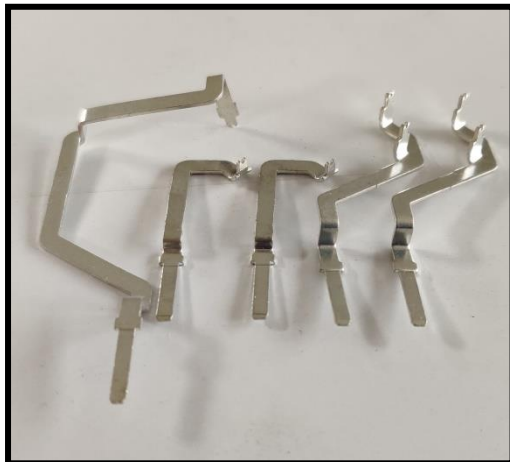
MS Nut



SS Tube



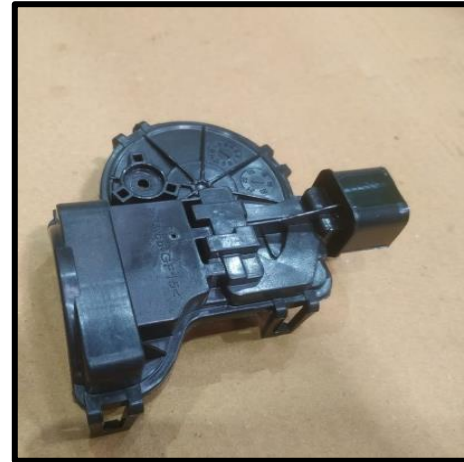
MS Nut



Insert



1st Moulding



2nd Moulding





AUTO COMPONENTS



Cable Tie & Auto Clips



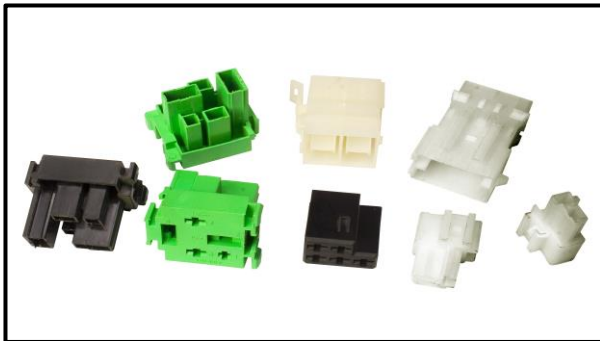
Engineering Parts



Customized Components



Coolant bottles



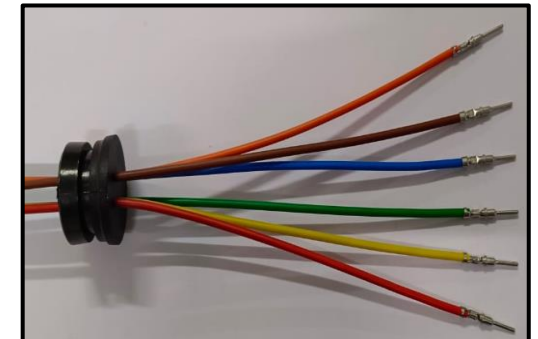
Connectors



Automotive handles



Fuse Boxes & Covers



DP Pass through



PLASTIC PARTS



Insert



Holder F



Handle Groove



Cover Hood



Clamping Element



Bushing Big



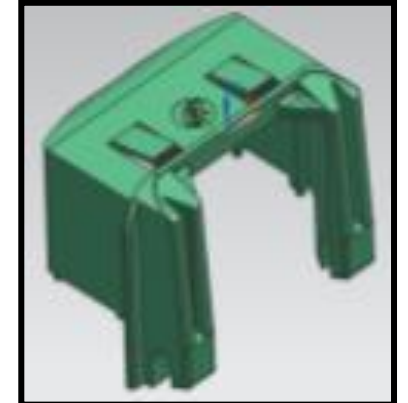
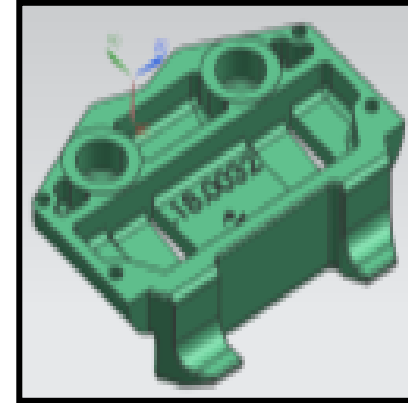
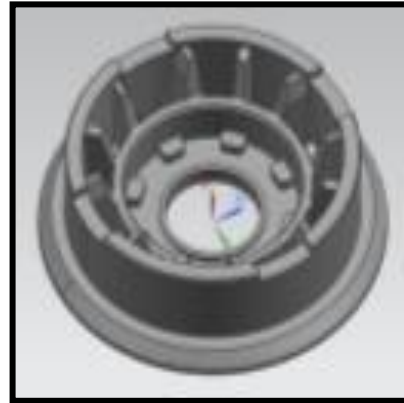
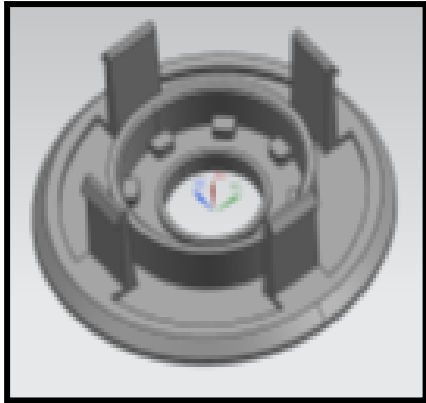
Bushing Small



Bracket Top



PLASTIC PARTS

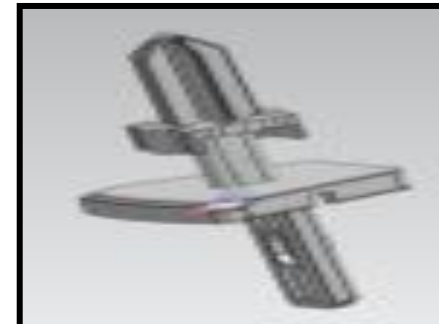
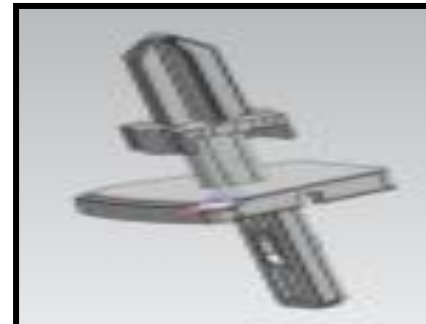
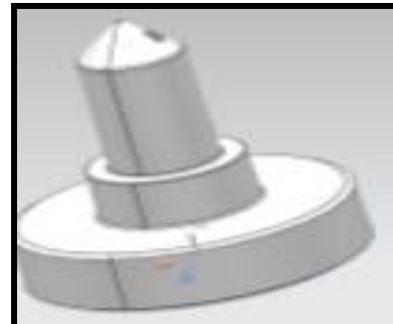
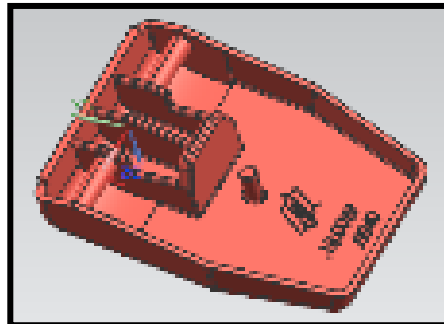


Pulley 1Lift Mechanism Pulley 2Lift Mechanism

Brake Shoe

OBEN

UTEN



Bremshel

TRAY 18,2/27

Carrier/Tube Ø18.3

Carrier/Tube Ø19.6

Traction Support Roller



MATERIAL HANDLED



Specialty Plastics

PEEK 450 G Victrex

PEEK 150FW30- Victrex

LCP – Liquid crystal polymer

PPS GF40%

PA 46/H Stanyl TW 341 SW11000

PA 6 CF 10 TF 20

PA11-RILSAN PC+ABS-BAYBLEND

Thermoplastic Elastomers

TPE-U (Polyurethane)

TPE- Kraiburg

PVC-Kadakia

Others

PP

PP Talc/Glass Filled

LDPE/HDPE

Hi-Tech Engineering Plastics (Unfilled and Filled)

PA11, PA12- Evonik

PBT GF 30% - VALOX /SABIC

PC + PBT

ABS GF 15%

PA 6 & 66 – Plain & GF - BASF/DUPONT

PC LEXAN 2407 -SABIC

POM K,MR- Polyplast

POM H,MR- Polyplast

PA66-CF10-TF20

Master Batch

CALIRENT

POLY ONE



MOULDING MACHINES: 28 NOs



Sr No.	MACHINE TONNAGE	MAKE	QTY (in No.)
1	250T, 200T, 150T, 110T, 80T, 50T,	FERROMATIC	11
2	150T, 100T, 50T, 60T	FANUC	5
3	150T,140T, 85T, 55T,	JSW ALL ELECTRIC	5
4	220T, 60T	ENGEL	2
5	50T	TOYO	2
6	100T	TOSHIBA ALL ELECTRIC	1
7	160T	SUZHOU LIZHU MACHINERY CO. LTD-VERTICAL	1
8	6T	BABY PLAST	1

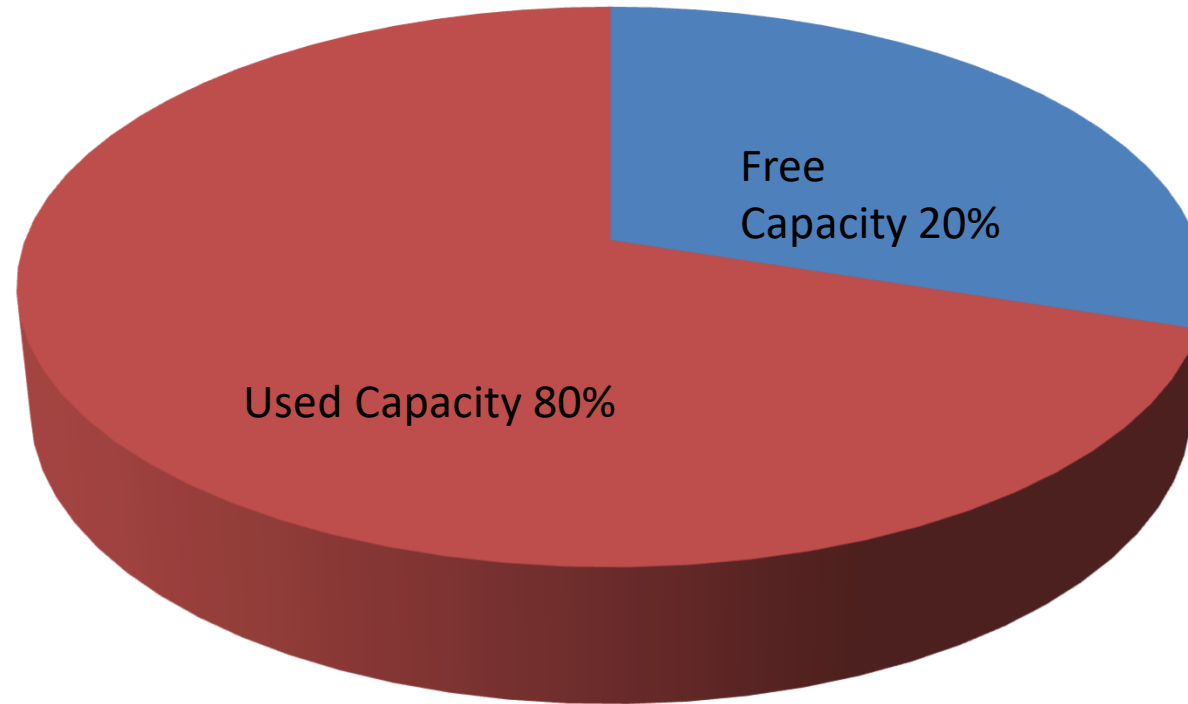


Total No. Of Injection Moulding Machines

28



FREE CAPACITY



Whenever we reach our capacity above 80-90%, we increase our capacity by 20% and always keep free capacity for new business



PLANT -2 GROUND FLOOR MOULDING MACHINE SECTION





PLANT -2 SECOND FLOOR MOULDING MACHINE SECTION





MOULDING MACHINES



Hydraulic M/C
Ferromatic & Mitsubishi



All Electric: JSW & Toshiba



New FANUC ROBOSHOT Alpha-S100iA 200mms



All Electric : Fanuc



FEATURES - ENGLE MACHINE



- Short Capacity : 510gm.
- Tie Bar Less Machine.
- Mould can be loaded on the Machine 700X700mm.
- Up to 408gm Component can be Moulded .

Horizontal

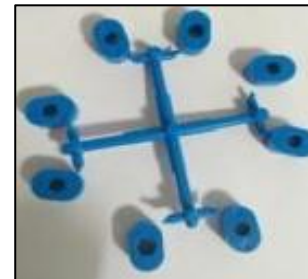
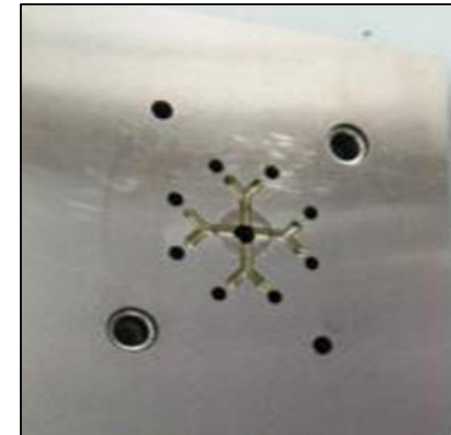


Vertical

- M/C Tonnage : 60 Ton
- Shot Capacity : 53 Cm³
- Screw Diameter: 22 mm
- Max Distance between Platen : 520mm
- Platen Size : 940*400mm (Horizontal * Vertical)
- Min. Mold Height : 190mm
- Max. Mold Weight : 1350 Kg



BABY PLAST / MINIATURE MOULDING MACHINE





NEW ASSEMBLY LINE SETUP

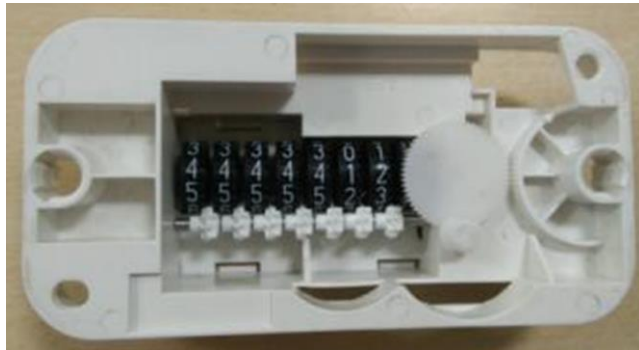




FEATURES OF ASSEMBLY



- Assembly Of Plastics ,Metal , Ceramic & Magnet
- Printing(Hot stamping)
- Ultrasonic Welding





3D PRINTING MACHINE FOR MAKING PROTOTYPES



Specifications :

Print Technology

Build Volume

Layer Resolution Settings

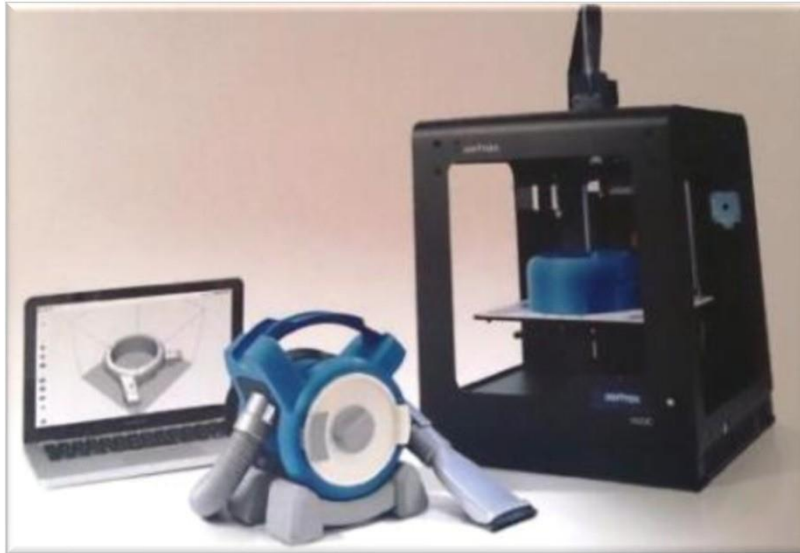
Advanced Wall Thickness Minimal

: LPD - Layer Plastic Deposition

: 200 x 200 x 185mm

: 25-50 Microns.

: 400 Microns





SPECIALTY: CAMERA INSPECTION MACHINE



Newly Added one more Machine for 100% Part Inspection





TOOLROOM



➤ **Manufacturing Capacity : 8 to 10 Tool Per Month**

➤ **Type of Moulds**

- Multicavity
- Insert
- Over mould
- Proto mould, Miniature mould
- Hot Runner

➤ **Capacity to develop the mould size up to 650Ton.**

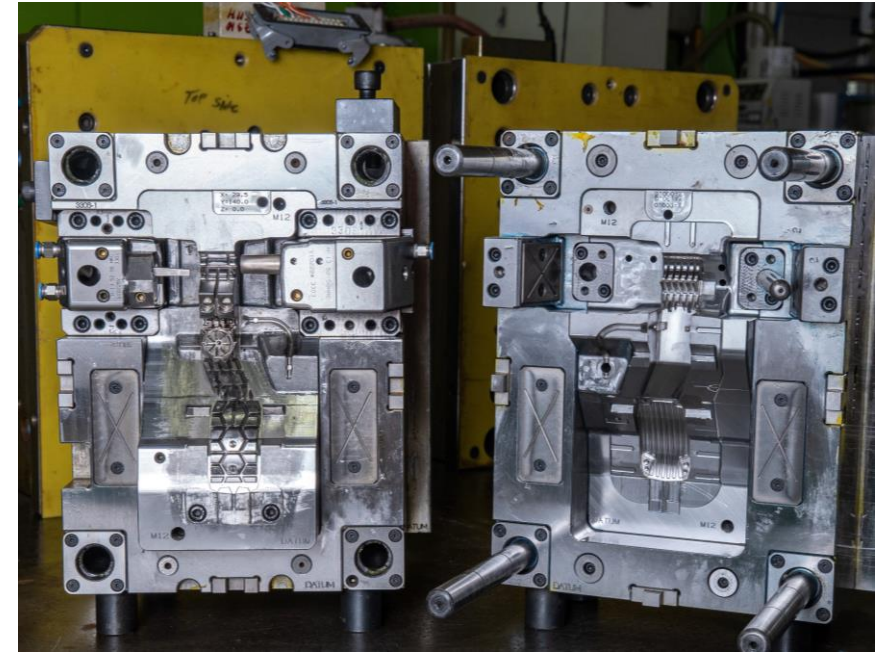
➤ **Optimize lead time:**

Simple 2 Plate Moulds	30 Days
3 Plate Moulds	45 Days
Any Critical A class Moulds	60-90 Days

➤ **Export Quality Tools**

➤ **Best Optimize Design**

➤ **Tooling & Technical Expertise**





MOULDS MANUFACTURED

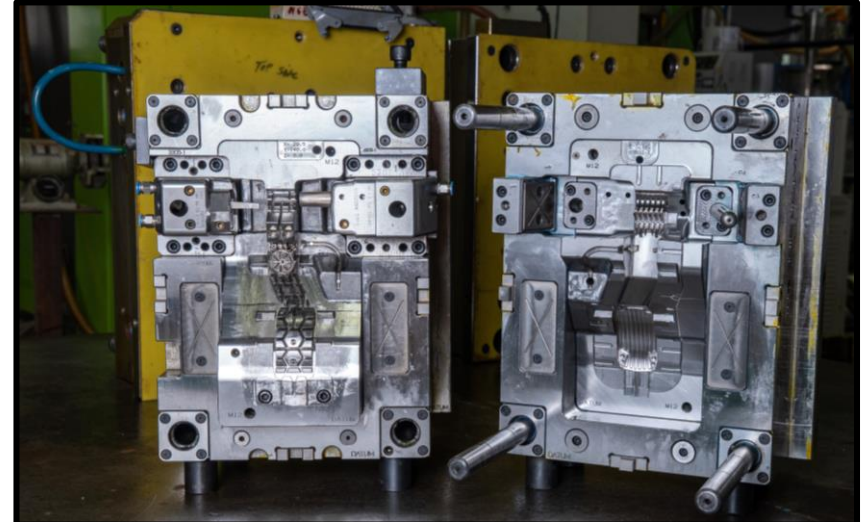


100 Tools /Year

Multi cavities molds

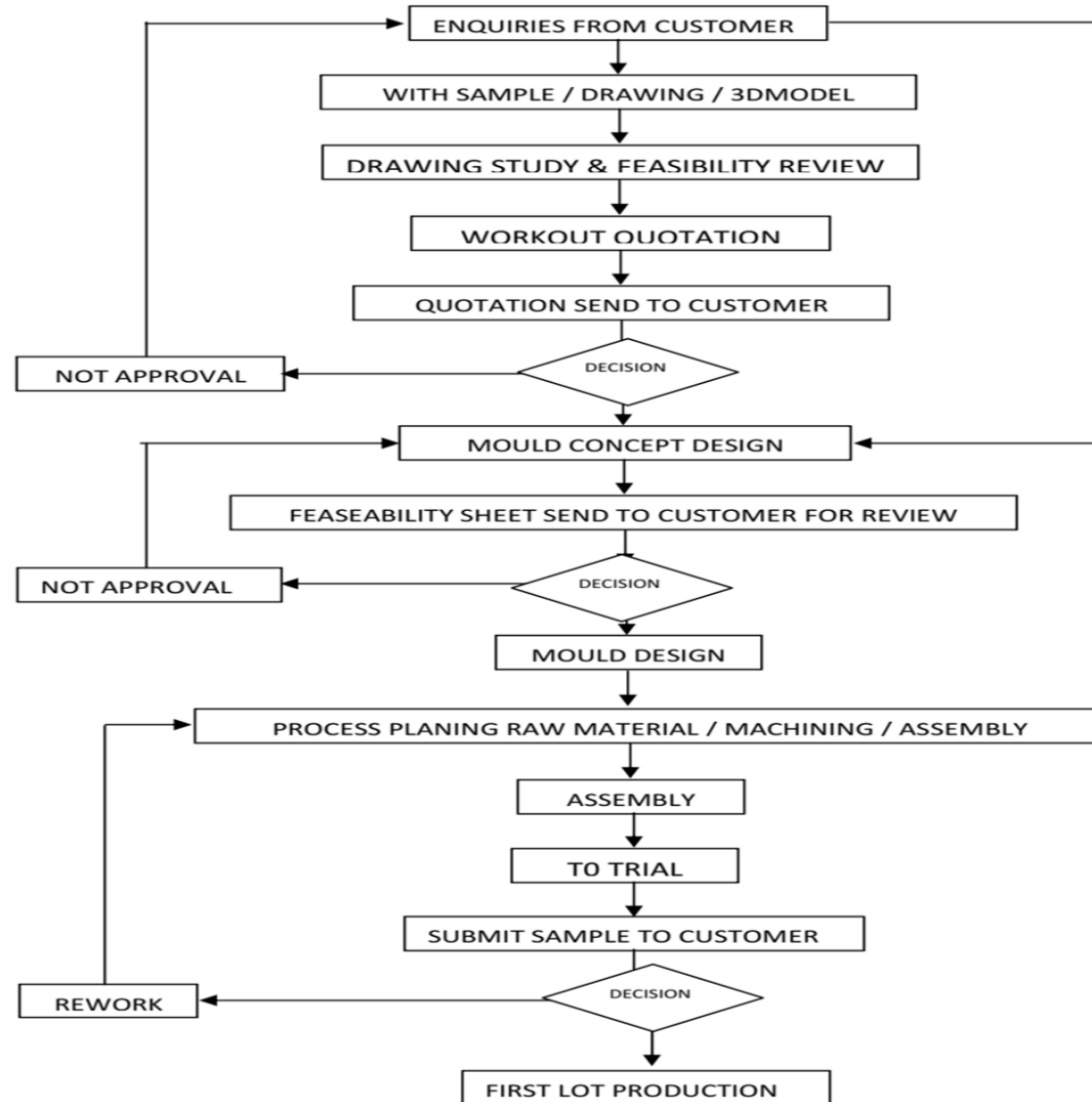
Over Molds

Hot Runner Molds





DEVELOPMENT PROCESS



ED BY :-

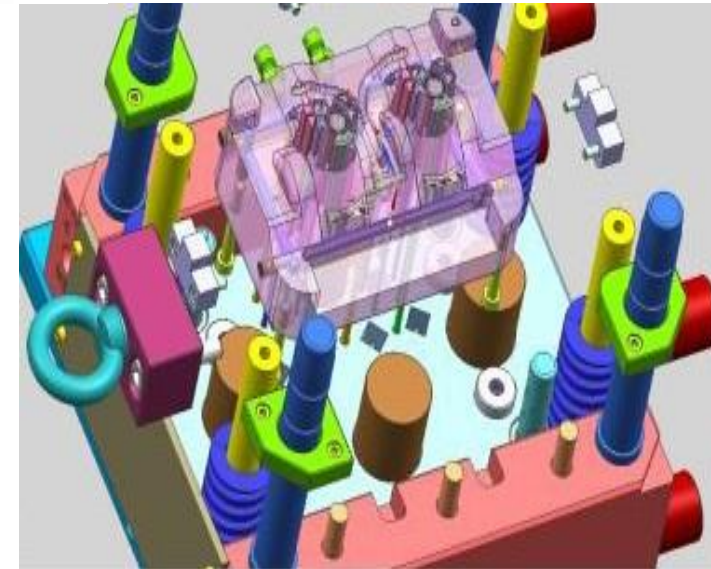
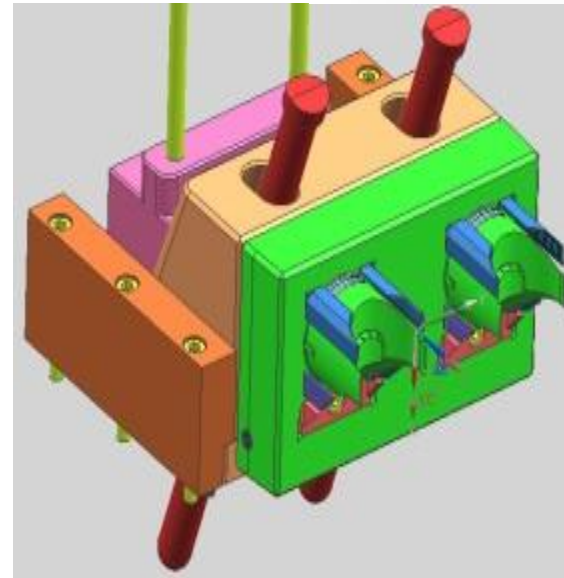
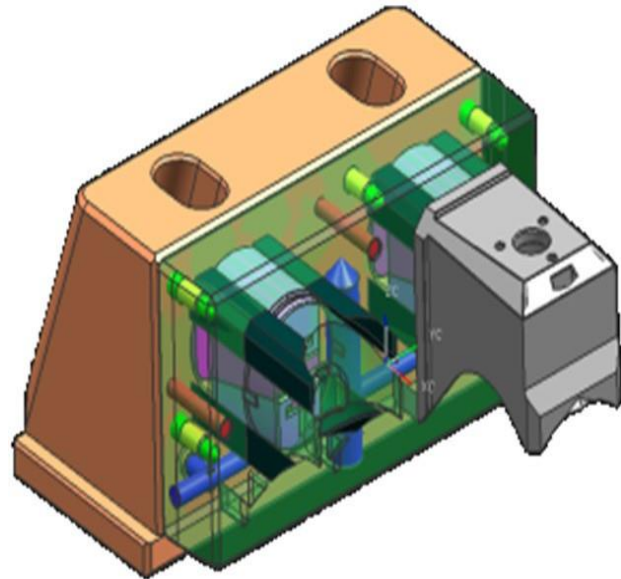
APPROVED |



RECENT DEVELOPMENT



- Metal To plastic Conversion
- Soft Tooling(Prototype)
Hardened Production tools.

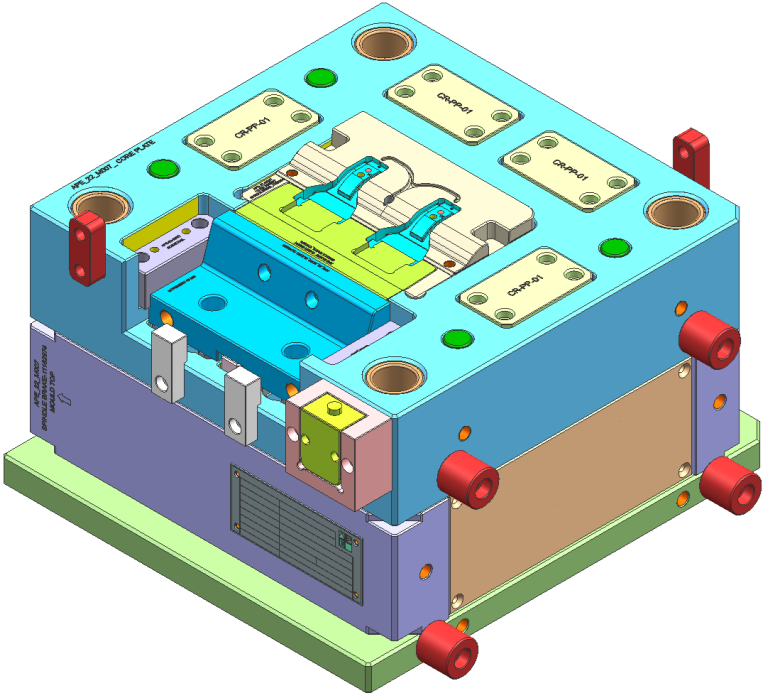
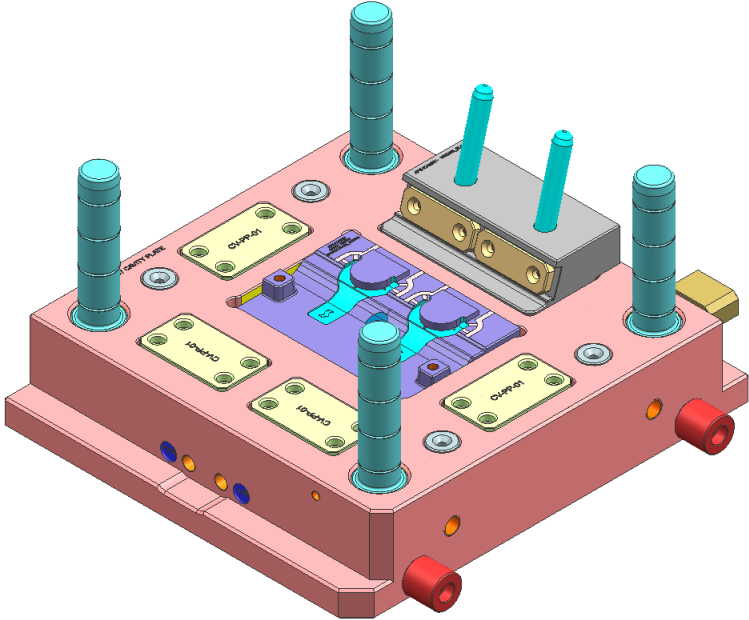




RECENT DEVELOPMENT



- Over Moulding

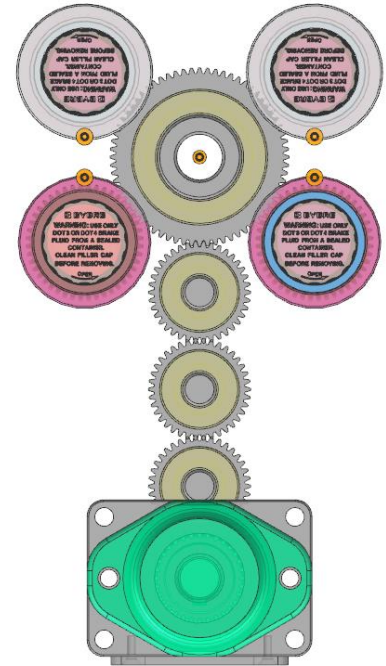
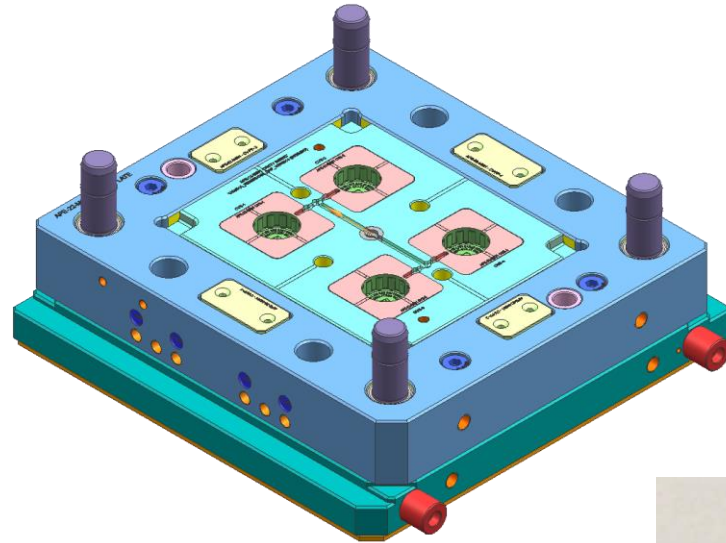
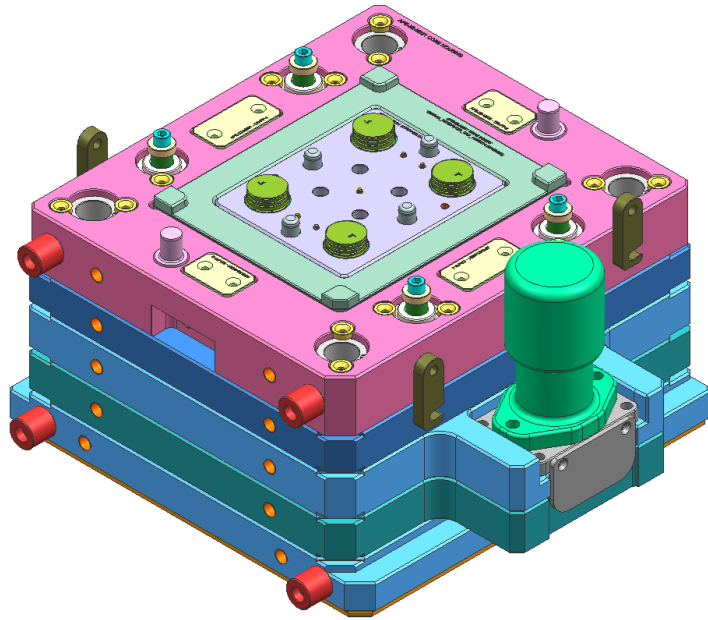




RECENT DEVELOPMENT

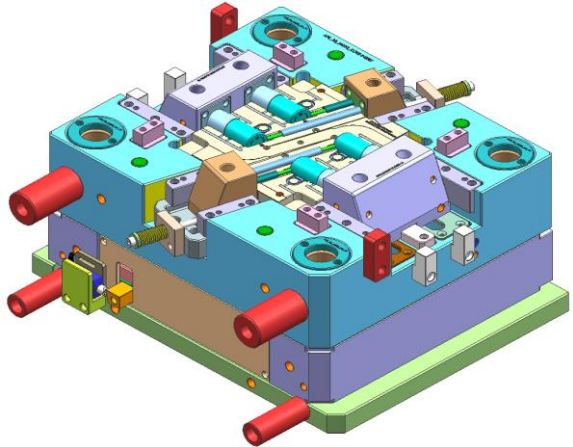
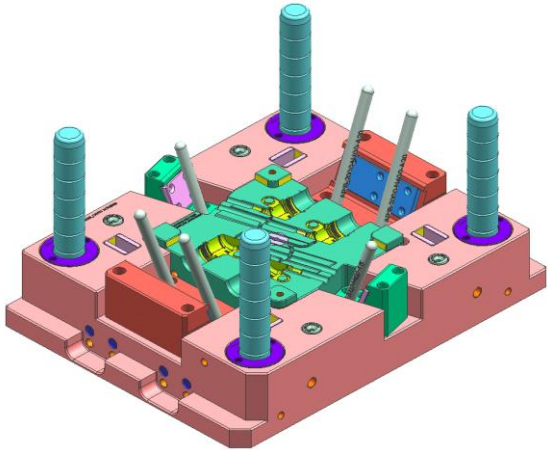
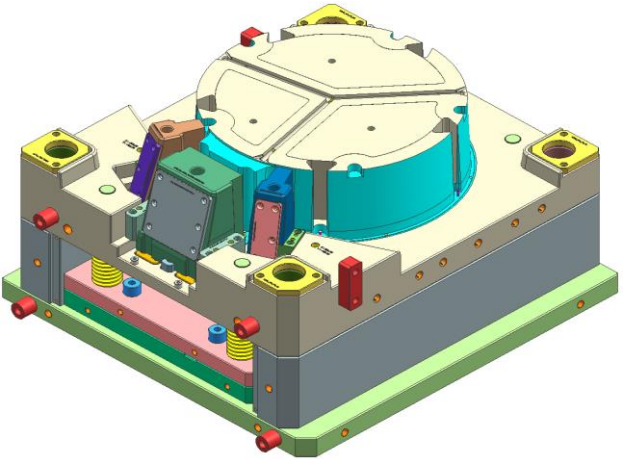
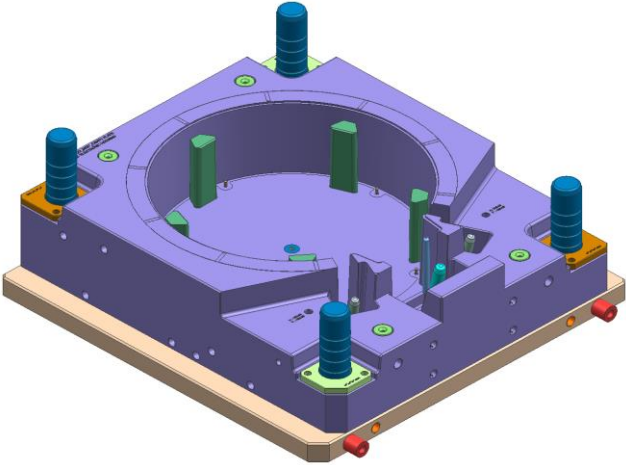


- With gear Mechanism





RECENT DEVELOPMENT





MACHINE FACILITIES



VMC Machines



MAKINO TS-105



HAAS VMC VF-4



HAAS VMC VF-2-1



MACHINE FACILITIES



EDM Machine



MITSUBISHI EDM - EA12S



MITSUBISHI EDM - SG12



DM ELECTRONICA D300 ZNC



MACHINE FACILITIES



Wirecut Machine



Mitsubishi MV-1200S CNC Wire-cut



Sparkonix EDM Drill Speed ii



MACHINE FACILITIES



Conventional Machines



LMW CNC Lathe With
Fanuc Controller.



Kent Surface Grinder



Okamoto Surface
Grinding Machine



MACHINE FACILITIES



Metrology



Vision Measurement System
- Mitutoyo M/C



Height Measuring Gauge -
Trimos_v7



Profile Projector
- Mitutoyo



Muffle Furnace



FACILITY



DESIGN DEPARTMENT

CAD-CAM DEPARTMENT





TOOLSHOP



Tool Assembly



Conventional Machines



TOOLROOM - MACHINE LIST



Sr No.	DISCRIPTION	BRAND	QUANTITY	SIZE
1	CNC EDM	MITSUBISHI	2	400 x 300 x 360
2	ZNC EDM	ELECTRONICA	1	400 x 300 x 250
3	WIRE EDM	MITSUBISHI	1	450 x 350 x 220
5	EDM DRILL	SPARKONIX	1	300 x 250 x 200
6	VMC	MAKINO	1	920 x 510 x 610
7	VMC	HAAS VF 4	1	1270 x 508 x 635
8	VMC	HAAS VF 2	1	762 x 406 x 508
9	SURFACE GRINDING	KENT	1	600 x 250
10	SURFACE GRINDING	OKAMOTO	1	450 x 150 x 250
11	SURFACE GRINDING	JOHN AND SHIPMAN	1	600 x 200 x 250
12	RADIAL DRILL	ELLIOTT	1	1000 x 1000 x 1000
13	LATHE	TOP TECH	1	5 FT
14	UNIVERSAL MILLING	ARGO	1	1000 x 360 x 350
15	UNIVERSAL MILLING	ARGO	1	1000 x 360 x 300
16	MILLING	3M GAMBIN	1	1200 x 500 x 400
17	BENCH GRINDING	PROTH	1	8"
18	PROFILE PROJECTOR	MITUTOYO	1	Dia 400
19	VMM	MITUTOYO	1	250 x 200 x 150
20	HEIGHT MASTER	TRIMOS V7	1	700



CUSTOMER: AUTOMOTIVE





CUSTOMER: TEXTILE



RIETER

SAURER.

**CUSTOMER: AEROSPACE &
TELECOM**

CUSTOMER: MEDICAL





CUSTOMER: OTHERS





AWARDS



Supplier of the year award
2014
Rieter India



Best delivery award
2015
Rieter India



Best of the best Supplier award
2006-2007
Tyco Electronics



Best Supplier award
2006-2007
Tata Yazaki



Best Emerging Supplier award
2005-2006
Tata Yazaki



FUTURE PLANS



- Installation of Zeiss CMM
- Focus on entire assembly products along with molding
- Addition of 400Tn to 1000Tn world class Injection Molding Machine.





THANK YOU