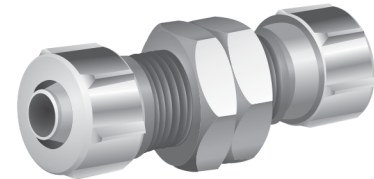
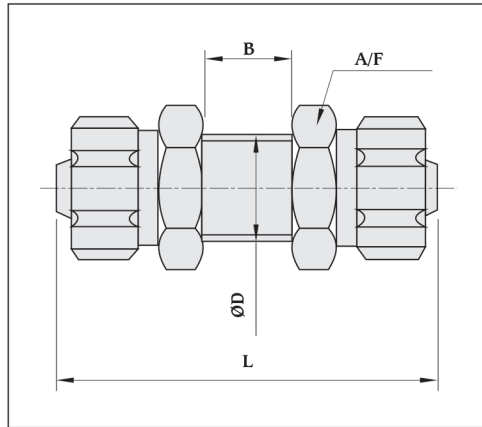


Connectors - Bulkhead

Basic Dimensions



Material : Aluminium
Finish : Blue anodised

Order code No. and type	Tube ID in mm	Nominal Bore in mm	Dimensions			
			B mm	D mm	L mm	A/F
BHC PU - 3	3	2.4	8.0	M6 x 0.75	34.0	10 mm
BHC PU - 4	4	3.4	9.5	M10 x 1.00	47.0	14 mm
BHC PU - 6	6	5.3	10.5	M12 x 1.00	47.0	17 mm
BHC PU - 8	8	7.0	7.0	M14 x 1.00	58.0	19 mm
BHC PU - 9	9	8.0	4.5	M16 x 1.00	58.0	22 mm
BHC PU - 13	13	12.0	5.0	M22 x 1.00	61.5	27 mm

Note : Subject to change without prior notice

