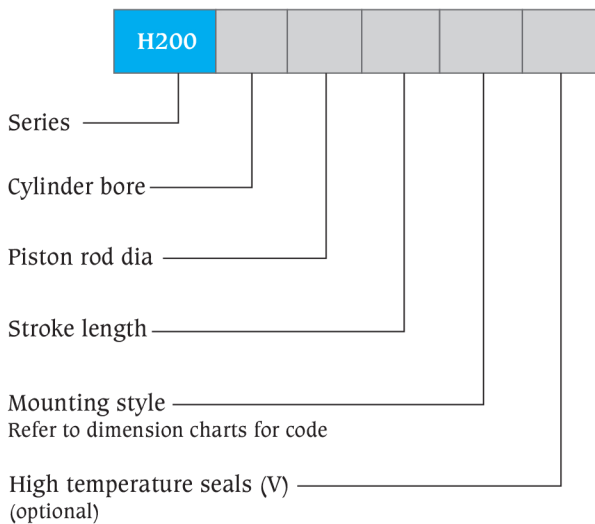


Cylinder selection guide

Operating pressure at kg/sq. cm				Theoretical forces (at mechanical efficiency = 100%)							
				140		160		180		200	
Piston dia mm	ROD dia mm	Piston area Sq. cm	ROD area Sq. cm	PUSH kgf	PULL kgf	PUSH kgf	PULL kgf	PUSH kgf	PULL kgf	PUSH kgf	PULL kgf
80	45	50.27	15.91	7038.08	4811.19	8043.52	5498.50	9048.96	6185.81	10054.4	6873.13
	56		24.63		3589.42		4102.20		4614.97		5127.74
100	56	78.55	24.63	10997.00	7548.34	12568	8626.68	14139	9705.01	15710	10783.34
	70		38.49		5608.47		6409.68		7210.89		8012.10
125	70	122.73	38.49	17182.81	11794.28	19637.50	13479.18	22092.19	15164.08	24546.88	16848.98
	90		63.63		8275.24		9457.42		10639.60		11821.78
160	90	201.09	63.63	28152.32	19244.75	32174.08	21994	36195.84	24743.25	40217.6	27492.5
	110		95.05		14845.95		16966.80		19087.65		21208.50
200	110	314.20	95.05	43988	30681.63	50272	35064.72	56556	39447.81	62840	43830.90
	140		153.96		22433.88		25638.72		28843.56		32048.4
250	140	490.94	153.96	68731.25	47177.13	78550	53916.72	88368.75	60656.31	98187.5	67395.9
	180		254.50		33100.97		37829.68		42558.39		47287.1
300	180	706.95	254.50	98973	63342.72	113112	72391.68	127251	81440.64	141390	90489.6
	220		380.18		45747.52		52282.88		58818.24		65353.6

Ordering details for H200 series hydraulic cylinder



Example

H200 series hydraulic cylinder with bore 100mm, piston rod dia 70mm, stroke 500mm. mounting rear flange will be specified as

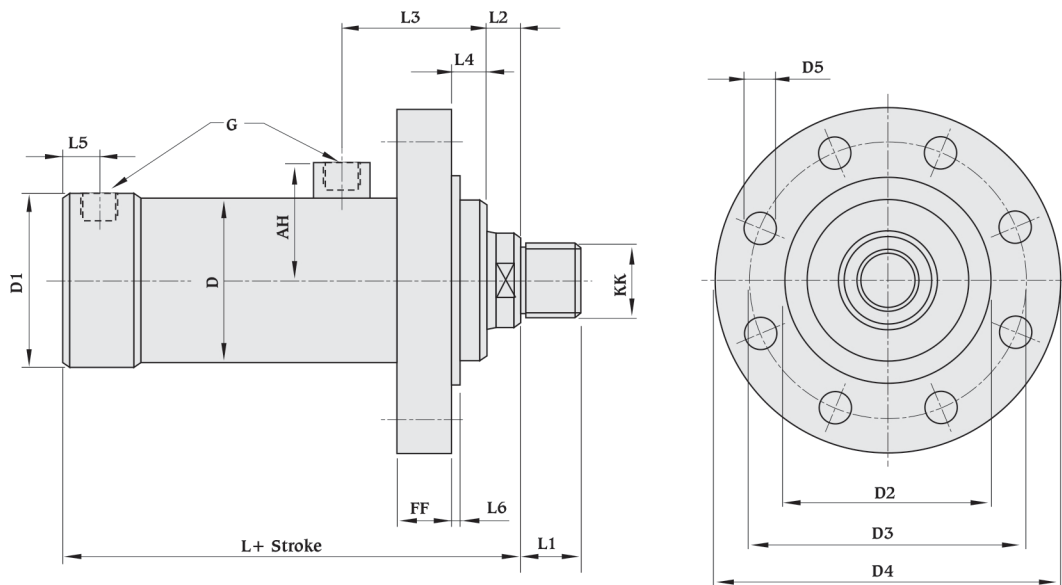
H200	100	70	500	RF	-
------	-----	----	-----	----	---

All dimensions are in millimeters unless otherwise stated.

Features and specifications

- 5 Standard mounting styles
- Provision for smaller as well as bigger rod diameter for each bore size
- Bore size - 80mm to 300 mm
- Strokes available in any practical stroke length
- Maximum working pressure - 200 bar
- Piston rods - 45 mm to 220 mm
- Single rod design
- Non-cushioned
- Temperature range : - 20°C to + 80°C (standard)
- 20° C to + 150°C (optional)
- Seal types to suit a wide variety of operating environments
- Standard fluid - Mineral oil DIN 51524 (HL, HLP)

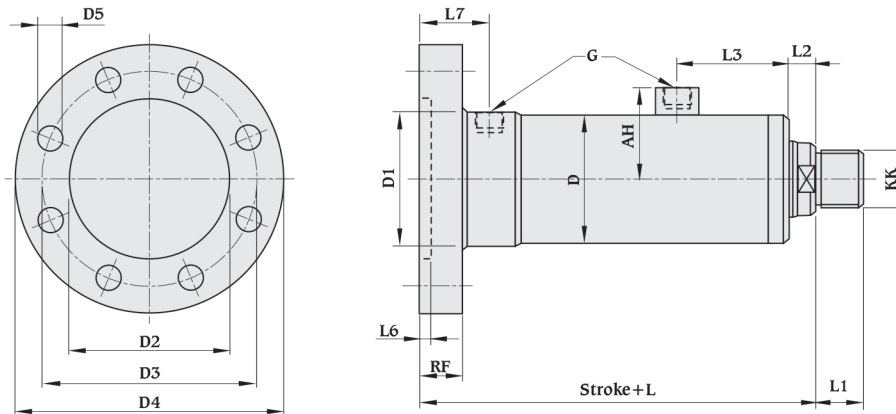
Mounting style Front flange (FF)



Piston Ø	Rod		AH	G BSP	D Ø	D1 Ø	D2 Ø	D3 Ø	D4 Ø	D5 Ø	FF	KK		L	L1		L2	L3	L4	L5	L6
	Ø1	Ø2										Ø1	Ø2								
80	45	56	73	1/2"	95	95	120	160	200	18(x8)	31	M33x2P	M42x2P	213	35	45	20	83	19	15	4
100	56	70	90	3/4"	120	120	140	191	231	22(x8)	32	M42x2P	M48x2P	247	45	58	30	93	20	19	5
125	70	90	103	3/4"	150	150	165	205	245	22(x8)	40	M48x2P	M64x3P	277	58	65	30	98	20	19	5
160	90	110	123	1"	190	190	205	265	320	26(x8)	40	M64x3P	M80x3P	323	65	80	35	118	25	23	5
200	110	140	145	1"	238	238	260	320	380	33(x8)	50	M80x3P	M100x3P	370	80	100	35	130	30	23	5
250	140	180	184	1-1/4"	300	300	310	390	460	39(x8)	60	M100x3P	M125x3P	422	100	125	35	145	33	28	8
300	180	220	214	1-1/2"	357	357	380	450	520	33(x12)	65	M125x3P	M135x3P	510	125	135	40	180	38	40	8

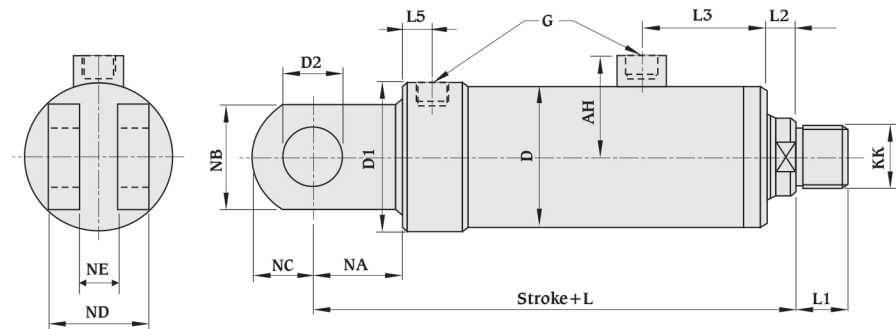
All dimensions are in millimeters unless otherwise stated.

**Mounting style
Rear flange (RF)**



Piston Ø	Rod		AH	G BSP	D Ø	D1 Ø	D2 Ø	D3 Ø	D4 Ø	D5 Ø	RF	KK		L	L1		L2	L3	L6	L7
	Ø1	Ø2										Ø1	Ø2		Ø1	Ø2				
80	45	56	73	1/2"	95	95	120	160	200	18(x8)	28	M33x2P	M42x2P	251	35	45	20	83	4	53
100	56	70	90	3/4"	120	120	140	191	231	22(x8)	32	M42x2P	M48x2P	289	45	58	30	93	5	61
125	70	90	103	3/4"	150	150	165	205	245	22(x8)	38	M48x2P	M64x3P	325	58	65	30	98	5	67
160	90	110	123	1"	190	190	205	265	320	26(x8)	38	M64x3P	M80x3P	371	65	80	35	118	5	71
200	110	140	145	1"	238	238	260	320	380	33(x8)	48	M80x3P	M100 x3P	428	80	100	35	130	5	81
250	140	180	184	1-1/4"	300	300	310	390	460	39(x8)	58	M100x3P	M125 x 3P	490	100	125	35	145	8	96
300	180	220	214	1-1/2"	357	357	380	450	520	33(x12)	65	M125x3P	M 135 X 3P	585	125	135	40	180	8	115

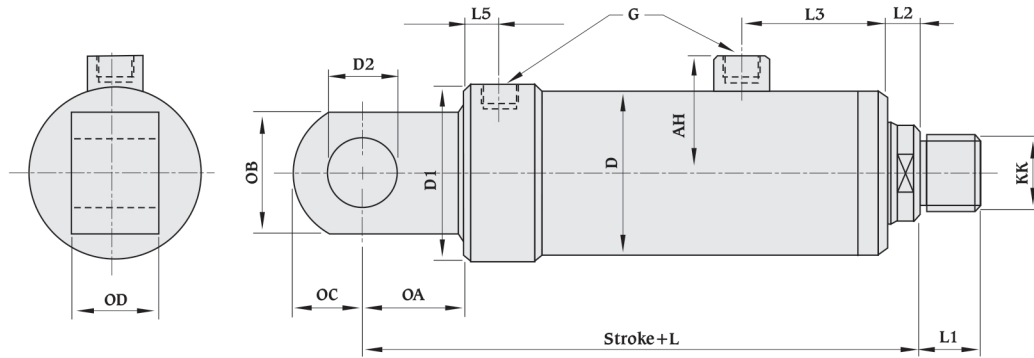
**Mounting style
Rear clevis (RP1)**



Piston Ø	Rod		AH	G BSP	D Ø	D1 Ø	D2 Ø	KK		L	L1		L2	L3	L5	NA	NB	NC	ND	NE
	Ø1	Ø2						Ø1	Ø2		Ø1	Ø2								
80	45	56	73	1/2"	95	95	40	M33x2P	M42x2P	273	35	45	20	83	15	60	80	40	90	45
100	56	70	90	3/4"	120	120	50	M42x2P	M48x2P	322	45	58	30	93	19	75	100	45	100	50
125	70	90	103	3/4"	150	150	50	M48x2P	M64x3P	362	58	65	30	98	19	85	100	60	100	50
160	90	110	123	1"	190	190	60	M64x3P	M80x3P	428	65	80	35	118	23	105	120	80	120	60
200	110	140	145	1"	238	238	80	M80x3P	M100 x3P	515	80	100	35	130	23	145	160	95	140	70
250	140	180	184	1-1/4"	300	300	100	M100x3P	M125 x 3P	612	100	125	35	145	28	190	200	130	165	85
300	180	220	214	1-1/2"	357	357	120	M125x3P	M 135 X 3P	750	125	135	40	180	40	240	240	145	215	110

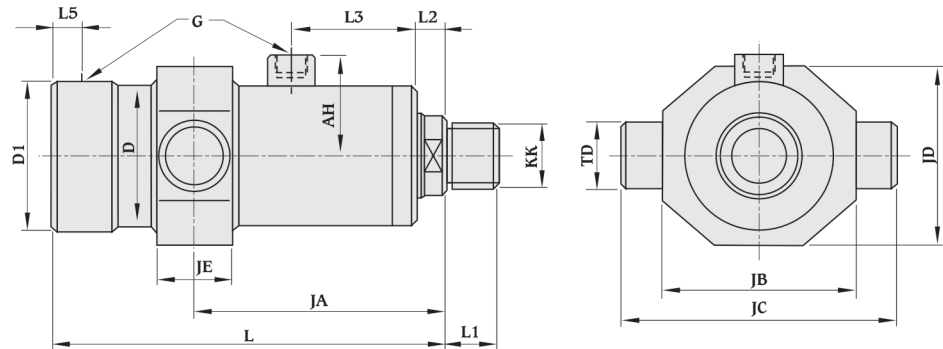
All dimensions are in millimeters unless otherwise stated.

**Mounting style
Rear eye (RP3)**



Piston Ø	Rod		AH	G BSP	D Ø	D1 Ø	D2 Ø	KK		L	L1		L2	L3	L5	OA	OB	OC	OD
	Ø1	Ø2						Ø1	Ø2		Ø1	Ø2							
80	45	56	73	1/2"	95	95	40	M33x2P	M42x2P	273	35	45	20	83	15	60	70	40	50
100	56	70	90	3/4"	120	120	50	M42x2P	M48x2P	317	45	58	30	93	19	70	90	45	60
125	70	90	103	3/4"	150	150	60	M48x2P	M64x3P	367	58	65	30	98	19	90	100	60	70
160	90	110	123	1"	190	190	70	M64x3P	M80x3P	433	65	80	35	118	23	110	140	80	90
200	110	140	145	1"	238	238	90	M80x3P	M100 x3P	510	80	100	35	130	23	140	160	95	118
250	140	180	184	1-1/4"	300	300	120	M100x3P	M125 x 3P	592	100	125	35	145	28	170	200	130	138
300	180	220	214	1-1/2"	357	357	150	M125x3P	M 135 X 3P	710	125	135	40	180	40	200	230	145	176

**Mounting style
Intermediate trunnion (TR 4)**

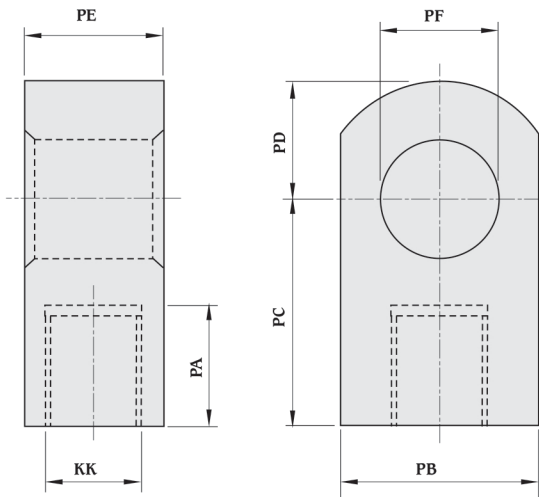


Piston Ø	Rod		AH	G BSP	D Ø	D1 Ø	KK		L	L1		L2	L3	L5	JA	JB	JC	JD	JE	TD Ø
	Ø1	Ø2					Ø1	Ø2		Ø1	Ø2									
80	45	56	73	1/2"	95	95	M33x2P	M42x2P	213	35	45	20	83	15	To be specified by customer	130	184	120	50	45
100	56	70	90	3/4"	120	120	M42x2P	M48x2P	247	45	58	30	93	19		165	230	140	60	55
125	70	90	103	3/4"	150	150	M48x2P	M64x3P	277	58	65	30	98	19		185	280	180	80	65
160	90	110	123	1"	190	190	M64x3P	M80x3P	323	65	80	35	118	23		235	360	220	100	85
200	110	140	145	1"	238	238	M80x3P	M100 x3P	370	80	100	35	130	23		300	440	290	130	110
250	140	180	184	1-1/4"	300	300	M100x3P	M125 x 3P	422	100	125	35	145	28		360	550	350	150	130
300	180	220	214	1-1/2"	357	357	M125x3P	M 135 X 3P	510	125	135	40	180	40		450	680	420	180	160

All dimensions are in millimeters unless otherwise stated.

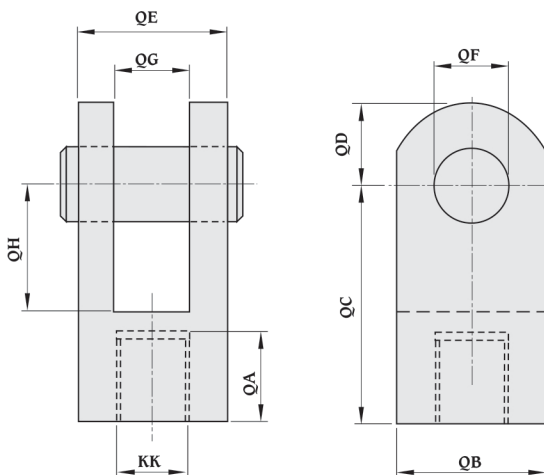
Accessories

Plain rod eye



Model No.	KK THD	PA	PB	PC	PD	PE	PF Ø
PRE-H200-M33x2P	M33x2P	37	70	70	40	50	40
PRE-H200-M42x2P	M42x2P	48	90	90	45	60	50
PRE-H200-M48x2P	M48x2P	55	100	115	60	70	60
PRE-H200-M64x3P	M64x3P	68	140	140	80	90	70
PRE-H200-M80x3P	M80x3P	64	160	160	90	98	80
PRE-H200-M100x3P	M100x3P	104	180	190	110	118	100
PRE-H200-M125x3P	M125x3P	130	230	255	145	176	150
PRE-H200-M135x3P	M135x3P	140	270	275	165	196	170

Rod clevis



Model No.	KK THD	QA	QB	QC	QD	QE	QF Ø	QG	QH
RC-H200-M33x2P	M33x2P	37	80	110	40	90	40	45	60
RC-H200-M42x2P	M42x2P	48	100	140	55	100	50	50	75
RC-H200-M48x2P	M48x2P	55	100	160	55	100	50	50	85
RC-H200-M64x3P	M64x3P	68	120	190	70	120	60	60	105
RC-H200-M80x3P	M80x3P	64	140	235	80	130	70	65	130
RC-H200-M100x3P	M100x3P	104	180	295	110	155	90	80	165
RC-H200-M125x3P	M125x3P	130	240	405	145	215	120	110	240
RC-H200-M135x3P	M135x3P	140	280	450	165	250	140	130	270

All dimensions are in millimeters unless otherwise stated.