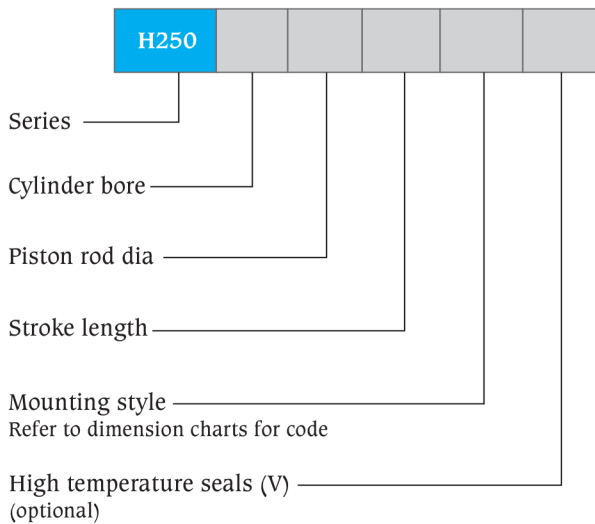


Cylinder selection guide

Operating pressure at kg/sq. cm				Theoretical forces (at mechanical efficiency = 100%)							
				160		180		200		250	
Piston dia mm	Rod dia mm	Piston area sq. cm	Rod area sq. cm	Push kgf	Pull kgf	Push kgf	Pull kgf	Push kgf	Pull kgf	Push kgf	Pull kgf
80	45	50.27	15.91	8043.52	5498.50	9048.96	6185.81	10054.4	6873.10	12568	8591.41
	56		24.63		4102.20		4614.97		5127.74		6409.68
100	56	78.55	24.63	12568.00	8626.68	14139	9705.01	15710	10783.34	19637.5	13479.18
	70		38.49		6409.68		7210.89		8012.10		10015.13
125	70	122.73	38.49	19637.50	13479.18	22092.19	15164.08	24546.88	16848.98	30683.59	21061.22
	90		63.63		9457.42		10639.60		11821.78		14777.22
160	90	201.09	63.63	32174.08	21994.00	36195.84	24743.25	40217.6	27492.50	50272	34365.625
	110		95.05		16966.80		19087.65		21208.50		26510.63
200	110	314.20	95.05	50272	35064.72	56556	39447.81	62840	43830.90	78550	54788.63
	140		153.96		25638.72		28843.56		32048.4		40060.5
250	140	490.94	153.96	78550.00	53916.72	88368.75	60656.31	98187.50	67395.90	122734.375	84244.875
	180		254.50		37829.68		42558.39		47287.10		113112
300	180	706.95	254.50	113112	52282.88	127251	81440.64	141390	90489.6	176737.5	81692
	220		380.18				58818.24		65353.6		

Ordering details for H250 series hydraulic cylinder



Example

H250 series hydraulic cylinder with bore 100mm, piston rod dia 70mm, stroke 500mm, mounting rear flange will be specified as

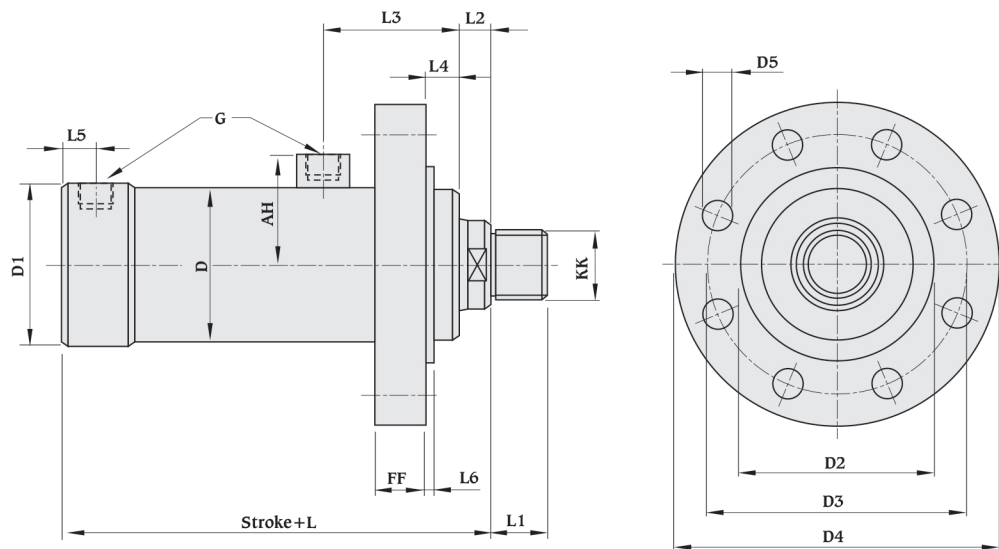
H250	100	70	500	RF	-
------	-----	----	-----	----	---

All dimensions are in millimeters unless otherwise stated.

Features and specifications

- 5 Standard mounting styles
- Provision for smaller as well as bigger rod diameter for each bore size
- Bore sizes - 80 to 300 mm
- Strokes available in any practical stroke length
- Maximum working pressure - 250 bar
- Piston rods - 45mm to 220mm
- Single rod designs
- Non-cushioned
- Temperature range : - 20°C to +80°C (standard)
- 20°C to +150°C (optional)
- Seal types to suit a wide variety of operating environments
- Standard fluid - Mineral oil DIN 51524 (HL, HLP)

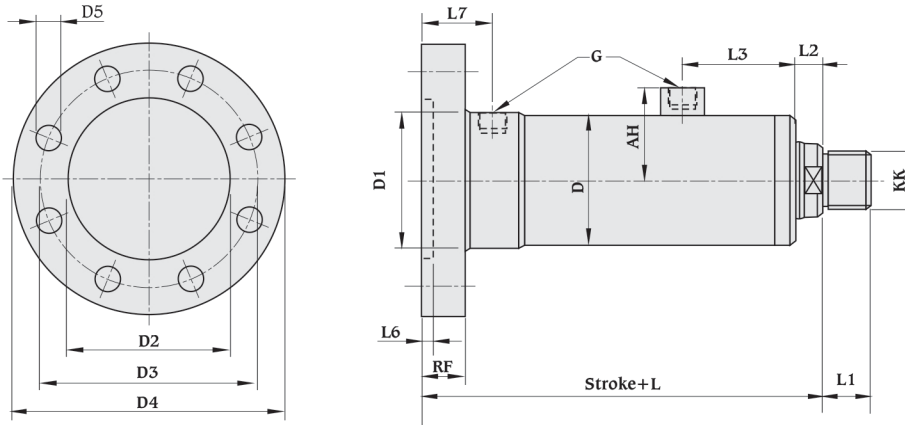
Mounting style Front flange (FF)



Piston Ø	Rod		AH	G	D Ø	D1 Ø	D2 Ø	D3 Ø	D4 Ø	D5 Ø	FF	KK		L	L1		L2	L3	L4	L5	L6
	Ø1	Ø2										Ø1	Ø2		Ø1	Ø2					
80	45	56	73	1/2"	100	100	120	160	200	18(x8)	31	M33x2P	M42x2P	213	35	45	20	83	19	15	4
100	56	70	90	3/4"	124	124	140	191	231	22(x8)	32	M42x2P	M48x2P	247	45	58	30	93	20	19	5
125	70	90	103	3/4"	155	155	170	205	245	22(x8)	40	M48x2P	M64x3P	277	58	65	30	98	20	19	5
160	90	110	123	1"	197	197	215	265	320	26(x8)	40	M64x3P	M80x3P	323	65	80	35	118	25	23	5
200	110	140	152	1"	248	248	270	340	410	33(x8)	50	M80x3P	M100x3P	370	80	100	35	130	30	23	5
250	140	180	184	1-1/4"	310	310	322	390	460	39(x8)	60	M100x3P	M125x3P	422	100	125	35	145	33	28	8
300	180	220	220	1-1/2"	371	371	400	485	560	39(x12)	75	M125x3P	M135x3P	520	125	135	40	190	38	40	8

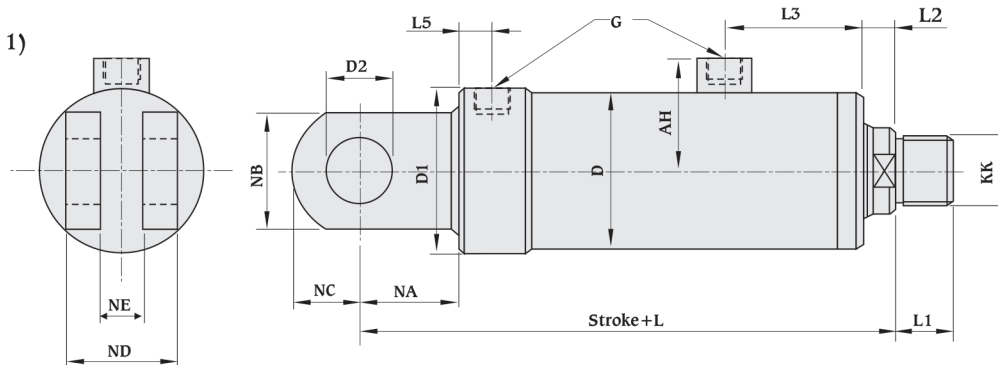
All dimensions are in mm unless otherwise stated.

Mounting style
Rear flange (RF)



Piston Ø	Rod		AH	G BSP	D Ø	D1 Ø	D2 Ø	D3 Ø	D4 Ø	D5 Ø	RF	KK		L	L1		L2	L3	L6	L7
	Ø1	Ø2										Ø1	Ø2		Ø1	Ø2				
80	45	56	73	1/2"	100	100	120	160	200	18(x8)	28	M33x2P	M42x2P	251	35	45	20	83	4	53
100	56	70	90	3/4"	124	124	140	191	231	22(x8)	32	M42x2P	M48x2P	289	45	58	30	93	5	61
125	70	90	103	3/4"	155	155	170	205	245	22(x8)	38	M48x2P	M64x3P	325	58	65	30	98	5	67
160	90	110	123	1"	197	197	215	265	320	26(x8)	38	M64x3P	M80x3P	371	65	80	35	118	5	71
200	110	140	152	1"	248	248	270	340	410	33(x8)	48	M80x3P	M100x3P	428	80	100	35	130	5	81
250	140	180	184	1-1/4"	310	310	322	390	460	39(x8)	58	M100x3P	M125x3P	490	100	125	35	145	8	96
300	180	220	220	1-1/2"	371	371	400	485	560	39(x12)	75	M125x3P	M135x3P	605	125	135	40	190	8	125

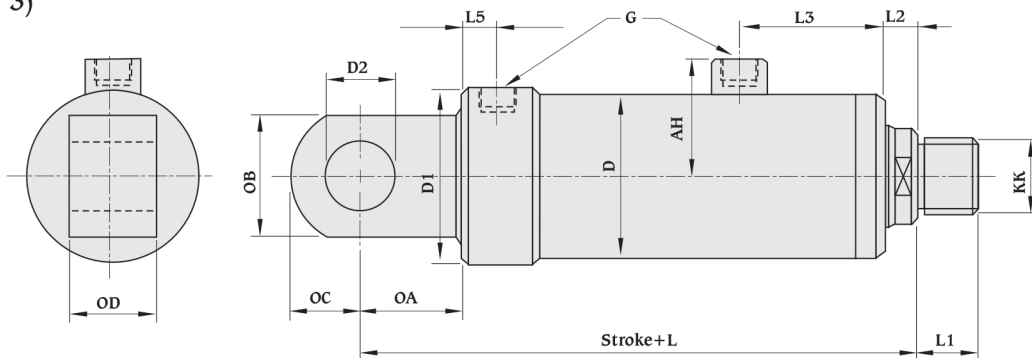
Mounting style
Rear clevis (RP 1)



Piston Ø	Rod		AH	G BSP	D Ø	D1 Ø	D2 Ø	KK		L	L1		L2	L3	L5	NA	NB	NC	ND	NE
	Ø1	Ø2						Ø1	Ø2		Ø1	Ø2								
80	45	56	73	1/2"	100	100	40	M33x2P	M42x2P	273	35	45	20	83	15	60	80	40	90	45
100	56	70	90	3/4"	124	124	50	M42x2P	M48x2P	332	45	58	30	93	19	85	100	45	100	50
125	70	90	103	3/4"	155	155	60	M48x2P	M64x3P	382	58	65	30	98	19	105	120	70	120	60
160	90	110	123	1"	197	197	70	M64x3P	M80x3P	453	65	80	35	118	23	130	140	90	130	65
200	110	140	152	1"	248	248	90	M80x3P	M100x3P	535	80	100	35	130	23	165	180	105	155	75
250	140	180	184	1-1/4"	310	310	110	M100x3P	M125x3P	632	100	125	35	145	28	210	220	135	180	95
300	180	220	220	1-1/2"	371	371	140	M125x3P	M135x3P	790	125	135	40	190	40	270	280	165	250	130

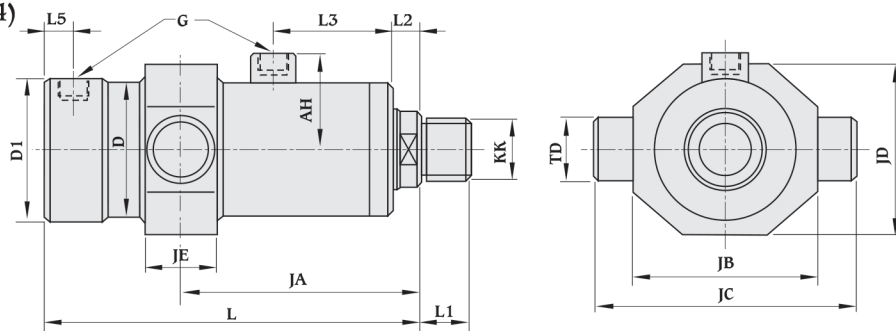
All dimensions are in millimeters unless otherwise stated.

**Mounting style
Rear eye (RP 3)**



Piston Ø	Rod		AH	G BSP	D Ø	D1 Ø	D2 Ø	KK		L	L1		L2	L3	L5	OA	OB	OC	OD
	Ø1	Ø2						Ø1	Ø2		Ø1	Ø2							
80	45	56	73	1/2"	100	100	40	M33x2P	M42x2P	273	35	45	20	83	15	60	70	40	50
100	56	70	90	3/4"	124	124	50	M42x2P	M48x2P	332	45	58	30	93	19	70	90	45	60
125	70	90	103	3/4"	155	155	60	M48x2P	M64x3P	382	58	65	30	98	19	100	120	70	80
160	90	110	123	1"	197	197	70	M64x3P	M80x3P	453	65	80	35	118	23	120	160	90	98
200	110	140	152	1"	248	248	90	M80x3P	M100x3P	535	80	100	35	130	23	150	180	100	118
250	140	180	184	1-1/4"	310	310	110	M100x3P	M125x3P	632	100	125	35	145	28	190	220	130	158
300	180	220	220	1-1/2"	371	371	140	M125x3P	M135x3P	790	125	135	40	190	40	230	270	160	196

**Mounting style
Intermediate trunnion (TR 4)**

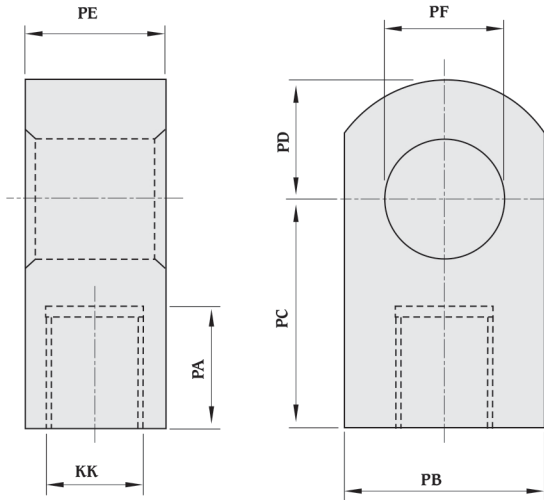


Piston Ø	Rod		AH	G BSP	D Ø	D1 Ø	KK		L	L1		L2	L3	L5	JA	JB	JC	JD	JE	TD
	Ø1	Ø2					Ø1	Ø2		Ø1	Ø2									
80	45	56	73	1/2"	100	100	M33x2P	M42x2P	213	35	45	20	83	15	To be specified by customer	130	184	120	50	45
100	56	70	90	3/4"	124	124	M42x2P	M48x2P	247	45	58	30	93	19		165	230	140	60	55
125	70	90	103	3/4"	155	155	M48x2P	M64x3P	277	58	65	30	98	19		185	280	180	80	65
160	90	110	123	1"	197	197	M64x3P	M80x3P	323	65	80	35	118	23		235	360	220	100	85
200	110	140	152	1"	248	248	M80x3P	M100 x3P	370	80	100	35	130	23		300	440	290	130	110
250	140	180	184	1-1/4"	310	310	M100x3P	M125 x 3P	422	100	125	35	145	28		360	550	350	150	130
300	180	220	220	1-1/2"	371	371	M125x3P	M 135 X 3P	520	125	135	40	190	40		470	700	420	180	160

All dimensions are in mm unless otherwise stated.

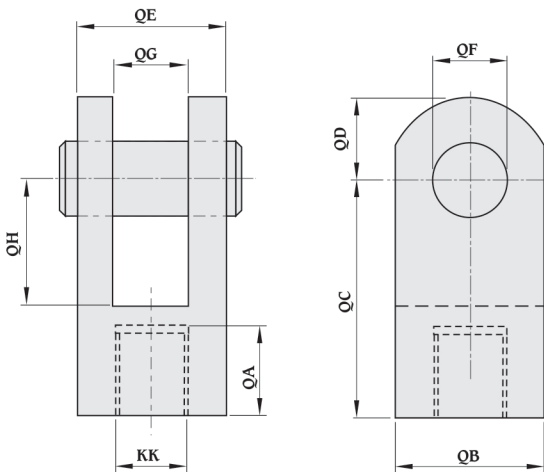
Accessories

Plain rod eye



Model No.	KK	PA	PB	PC	PD	PE	PF Ø
PRE-H250-M33x2P	M33x2P	37	70	70	40	50	40
PRE-H250-M42x2P	M42x2P	48	90	90	45	60	50
PRE-H250-M48x2P	M48x2P	55	120	125	70	80	65
PRE-H250-M64x3P	M64x3P	68	160	140	90	98	80
PRE-H250-M80x3P	M80x3P	84	160	160	95	118	90
PRE-H250-M100x3P	M100x3P	104	200	200	130	138	120
PRE-H250-M125x3P	M125x3P	130	270	260	165	196	170
PRE-H250-M135x3P	M135x3P	140	300	290	190	216	190

Rod clevis



Model No.	KK	QA	QB	QC	QD	QE	QF Ø	QG	QH
RC-H250-M33x2P	M33x2P	37	80	110	40	90	40	45	60
RC-H250-M42x2P	M42x2P	48	100	150	55	100	50	50	80
RC-H250-M48x2P	M48x2P	55	120	180	70	120	60	60	105
RC-H250-M64x3P	M64x3P	68	140	220	80	130	70	65	130
RC-H250-M80x3P	M80x3P	84	160	250	98	140	80	70	145
RC-H250-M100x3P	M100x3P	104	200	320	130	165	100	85	190
RC-H250-M125x3P	M125x3P	130	280	440	165	250	140	130	270
RC-H250-M135x3P	M135x3P	140	320	490	190	280	160	150	305

All dimensions are in millimeters unless otherwise stated.