



Features :

- In accordance with standard ISO 6432
- Bore sizes dia 12, 16, 20, 25 mm
- Wide variety of mountings and accessories
- High finish cylinder barrel and piston rod
- Low friction and long life

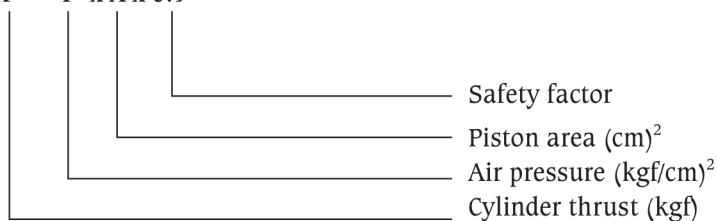
Technical Specifications

Piston Nominal Size (mm)	12	16	20	25
Medium	Compressed air (filtered, lubricated)			
Design	Piston cylinder			
Mode of operation	Double-acting / single-acting			
Sensing type	None			
Type of cushioning	Internal cushioning ring (Non-adjustable)			
Operating pressure Min.	1 bar			
Operating pressure Max.	10 bar			
Min. ambient temperature	-20°C			
Max. ambient temperature	80°C			
Material	End caps-Aluminium, Barrel-Stainless steel, Piston rod-S.S. 410 Roller burnished, / En8 Hard chrome plated, Seals - polyurethane			

Reference Information

How to calculate

$$F = P \times A \times 0.9$$

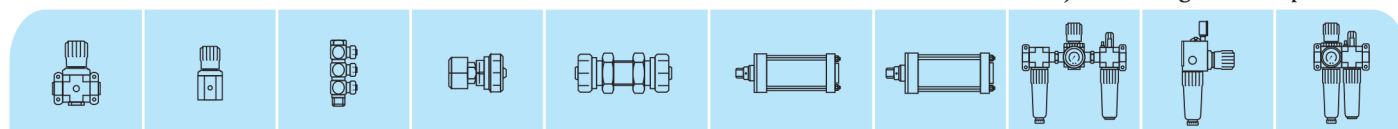


Criteria for selection : Cylinder thrust

All dimensions in mm unless otherwise specified

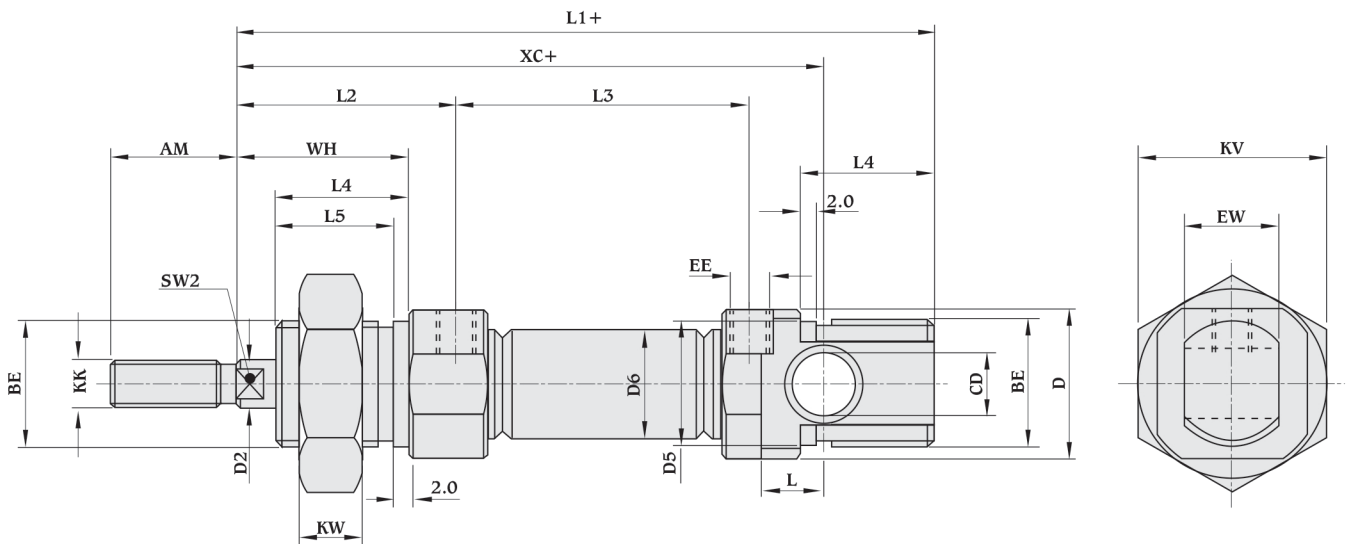
Bore size (mm)	Rod size (mm)	Acting type		Pressure area (cm) ²	Operating pressure (cm) ²								
					1	2	3	4	5	6	7	8	9
Ø12	Ø6	Double acting	Push side	1.017	1.017	2.034	3.06	4.068	5.085	6.10	7.11	-	-
			Pull side	0.765	0.765	1.53	2.025	3.06	3.825	4.59	5.35	-	-
Ø16	Ø6	Double acting	Push side	1.80	1.80	3.61	5.42	7.23	9.05	10.85	12.66	-	-
			Pull side	1.62	1.62	3.25	4.88	6.51	8.14	9.76	11.40	-	-
Ø20	Ø8	Double acting	Push side	2.82	2.82	5.65	8.46	11.30	14.13	16.95	19.78	22.60	25.43
			Pull side	2.37	2.37	3.62	7.1	9.5	11.88	14.25	16.63	19.0	21.38
Ø25	Ø10	Double acting	Push side	4.41	4.41	8.82	13.23	17.64	22.0	26.46	30.87	35.30	39.69
			Pull side	3.70	3.70	7.41	11.36	14.83	18.5	22.24	25.95	29.66	33.37

Note : Subject to change without prior notice

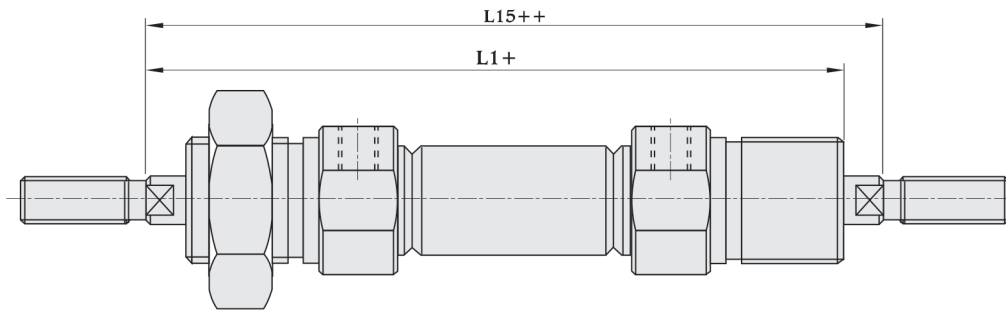


ISO 6432 Miniature Air Cylinders

Basic Dimensions



Double-Ended Piston Rod



+ = Stroke length

++ = 2 x Stroke length

All dimensions in mm unless otherwise specified

Piston dia. mm	AM	BE			Ø CD	D	Ø D2	Ø D5	Ø D6	EE	EW	KK
Ø 12	16	M16 x 1.5P			6	19	6	16	14	M5 x 0.8P	12	M6 x 1P
Ø 16	16	M16 x 1.5P			6	19	6	16	18	M5 x 0.8P	12	M6 x 1P
Ø 20	20	M22 x 1.5P			8	25	8	22	22	1/8"BSP	16	M8 x 1.25P
Ø 25	22	M22 x 1.5P			8	32	10	22	27	1/8"BSP	16	M10 x 1.25P
Piston dia. mm	KV	KW	L	L1	L2	L3	L4	L5	L15	SW 2	WH	XC
Ø 12	24	8	8	89.0	28.0	38.0	17	15	94.0	5	22	75.0
Ø 16	24	8	9	95.0	28.0	44.0	17	15	100.0	5	22	82.0
Ø 20	32	11	12	112.5	32.5	51.5	20	18	116.5	7	24	95.5
Ø 25	32	11	12	119.6	36.0	53.6	22	20	124.6	9	28	104.0

Note : Subject to change without prior notice

