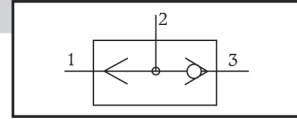


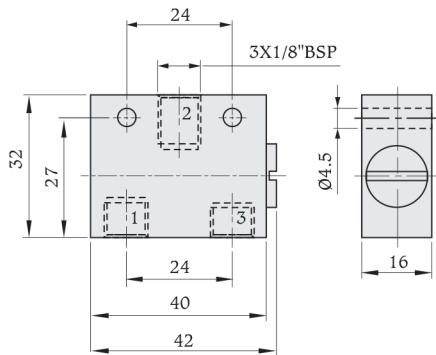
'OR' Gate Valve (shuttle Valve)



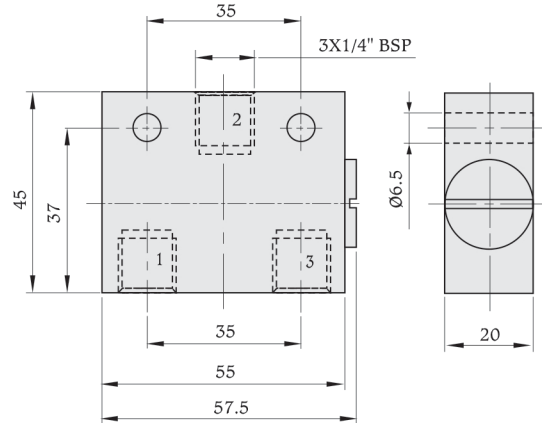
Model:- OG-01/OG-02

Basic Dimensions

Type :- OG-01



Type :- OG-02



Features

The shuttle valve has two inlets (1,3) and one outlet (2). The Valve automatically blocks the inlet which is not pressurised. If both inlets are pressurised simultaneously, the higher pressure is switched to outlet (1).

Application

This unit allows for the 'OR' function. i.e. an output signal is present provided that at least one input signal is present. 'OR' gates are used to control cylinders or valves from various positions and for 'OR' logic circuits.

Technical Specifications

Feature	Value	
Type	OG-01	OG-02
Medium	Compressed air (Filtered & lubricated)	
Design	'OR' gate (shuttle valve)	
Mounting	Through holes in housing	
Connection	1/8" BSP	1/4" BSP
Orifice size	4.0 mm	7.0 mm
Standard nominal flow rate	500 LPM	1170 LPM
Pressure range	0 to 10 bar	
temperature range	-10°C to +60°C	
Material	Aluminium, Nitrile, Delrin, Brass	

All dimensions in mm unless otherwise specified

Note : Subject to change without prior notice

