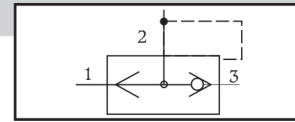


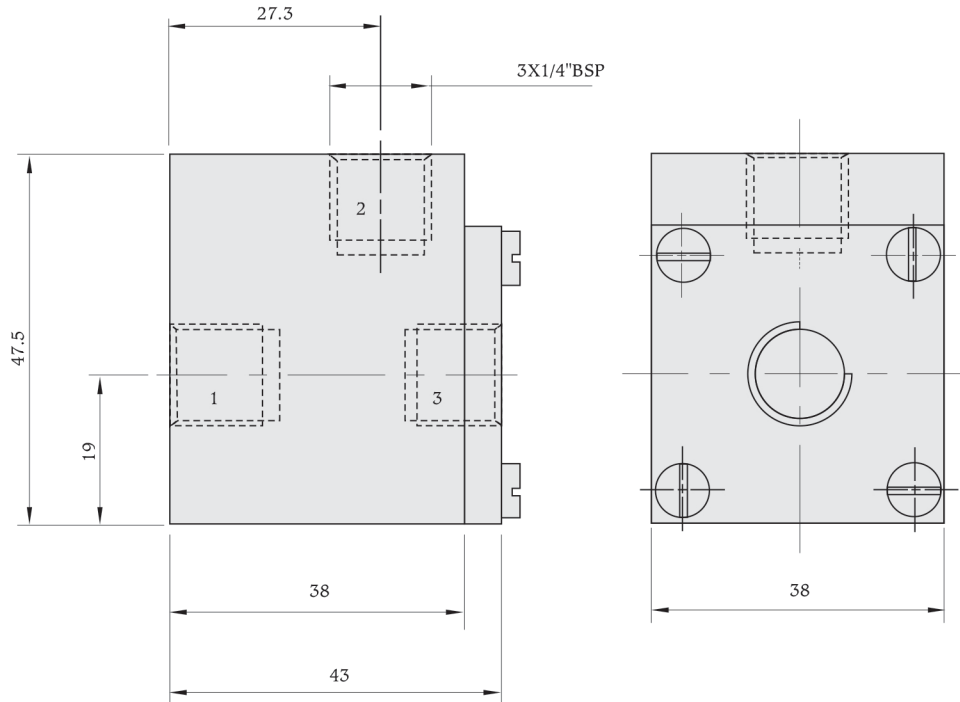
Quick Exhaust Valve



Model QEV-02



Basic Dimensions



Features

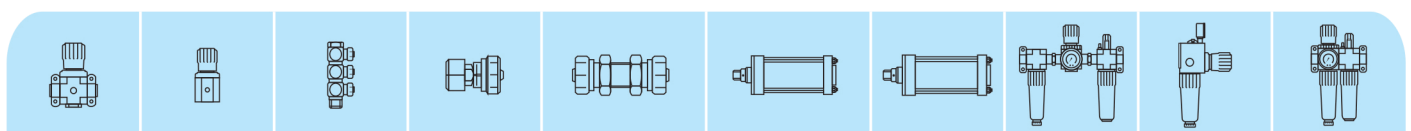
This unit makes it possible to achieve increased piston speed on the exhaust stroke with single-acting & double-acting cylinders. The compressed air passes from the control valve to the via 1 2 of the quick exhaust valve. Exhaust 3 is closed at this time. If pressure is released from 1, air is vented from 1 to 3 via the built-in silencer. For effective performance, the valve must be fitted directly into the port of the cylinder.

Technical Specifications

Feature	Value
Type	QEV-02
Medium	Compressed air (Filtered & lubricated)
Design	Diaphragm valve
Connection	1/4" BSP
Orifice size	6 mm
Standard nominal flow rate	1100 LPM
Pressure range	1 to 10 bar
Temperature range	-10°C to +60°C
Material	Aluminium, Nitrile

All dimensions in mm unless otherwise specified

Note : Subject to change without prior notice



Simplifying technology, redefining value.

www.duttacontrol.com