



Short Stroke Air Cylinders

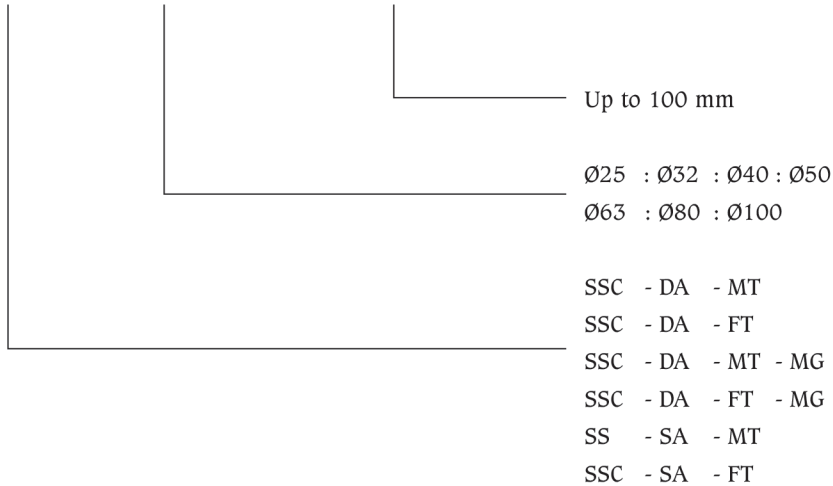


The Dutta make Short Stroke Cylinder is ideal for machine designs with small space requirements. The square body gives flexibility for machine design. The Dutta make Short Stroke Cylinder has a variety of double-acting and single-acting range from bore 25 to 100 mm and stroke up

to 100 mm for double-acting and 25 mm for single-acting. A Magnetic Reed Switch can also be adopted in the slot provided in the body. Installation of basic cylinder without mounting attachments.

How to order

Type - Piston dia - Stroke length



SSC	- Short Stroke Cylinder
SA	- Single Acting
DA	- Double Acting
MT	- Male Thread
FT	- Female Thread
MG	- Magnetic Piston

Sample order

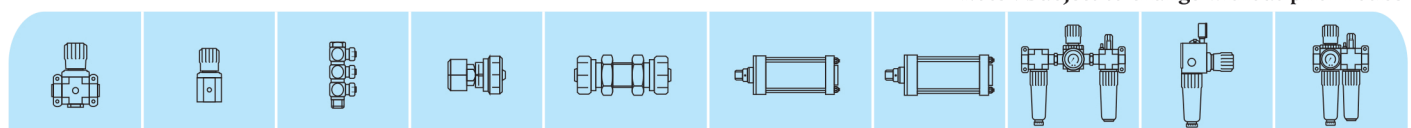
- 1) SSC - DA - MT - Ø50 - 25
- 2) SSC - DA - FT - MG - Ø40 - 20

All dimensions in mm unless otherwise specified

Medium	Compressed air (Filtered & Lubricated)
Design	Piston cylinder
Mounting	Through-hole or both ends tapped
Max. operating pressure	10 bar
Temperature range	- 10°C to 80°C
Tolerance in stroke	+1.0 mm
Materials	Housing - Aluminium, Piston rod - S.S. 410 Roller burnished. Seals - Nitrile & Polyurethane

Note : Max. stroke length 100

Note : Subject to change without prior notice

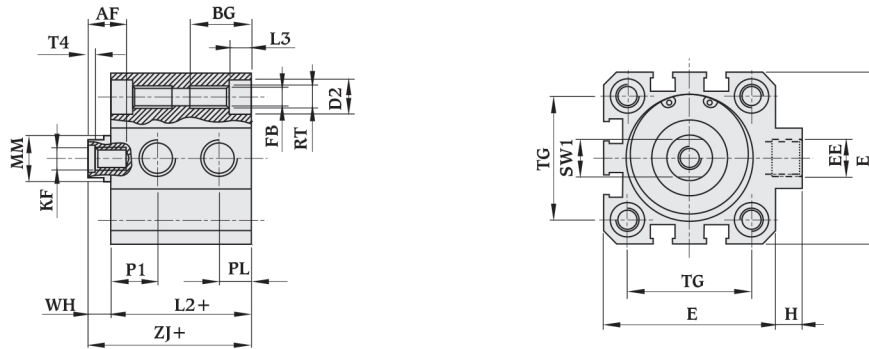


Short Stroke Air Cylinders - Double-Acting Female Thread



Basic Dimensions

Type : SSC - DA - FT



+ = Plus stroke length

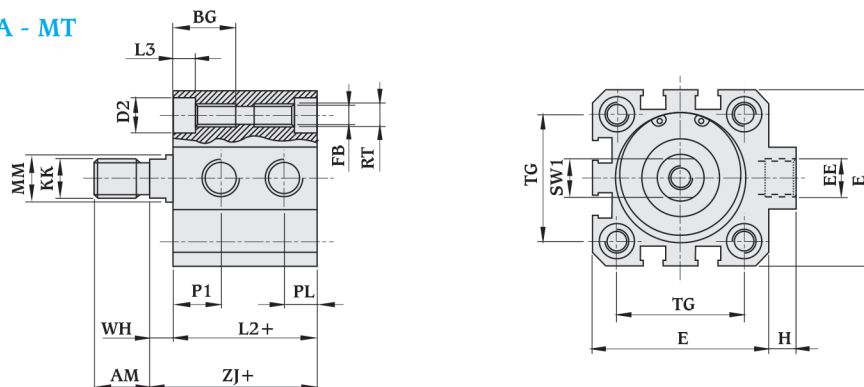
All dimensions in mm unless otherwise specified

Piston dia mm.	AF min.	BG min.	D2 Ø	E max.	EE BSP	FB Ø	H	KF	L2	L3	MM Ø	PL	P1	RT	T4	TG	WH	ZJ	SW1
25	10	18	7.5	40	M5	4.2	1.5	M5 x 0.8	39.5	4.5	10	7	7	M5 x 0.8	-	26	5.5	45	8
32	12	21.7	9	45.0	1/8"	5.2	7.0	M6 x 1P	33	5.7	12	8.5	10.0	M6 x 1P	2.6	32.5	6	39	10
40	12	21.7	9	53.5	1/8"	5.2	7.0	M6 x 1P	35	5.7	12	8.5	12.0	M6 x 1P	2.6	38.0	6	41	10
50	16	22.8	11	63.5	1/8"	6.8	7.0	M8 x 1.25P	35	6.8	16	9.5	12.0	M8 x 1.25P	3.3	46.5	8	43	13
63	16	22.8	11	77.0	1/8"	6.8	7.0	M8 x 1.25P	39	6.8	16	10.0	12.0	M8 x 1.25P	3.3	56.5	8	47	13
80	20	25.0	14	95.0	1/8"	8.5	6.5	M10 x 1.5P	43	9.0	20	11.0	15.0	M10 x 1.5P	4.7	72.0	8	51	17
100	24	25.0	14	113.0	1/4"	8.5	7.0	M12 x 1.75P	52	9.0	25	13.5	16.5	M10 x 1.5P	6.1	89.0	10	62	22

Short Stroke Cylinders - Double-Acting Male Thread

Basic Dimensions

Type : SSC - DA - MT

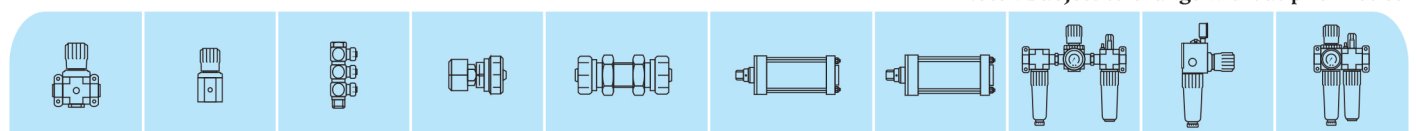


+ = Plus stroke length

All dimensions in mm unless otherwise specified

Piston dia mm.	AM -0.5	BG min.	D2 Ø	E max.	EE BSP	FB Ø	H	KK	L2	L3	MM Ø	PL	P1	RT	TG	WH	ZJ	SW1
25	14	18	7.5	40	M5	4.2	1.5	M10 x 1.25P	39.5	4.5	10	7	7	M5 x 0.8	26	5.5	45	8
32	14	21.7	9	45.0	1/8"	5.2	7.0	M10 x 1.25P	33	5.7	12	8.5	10.0	M6 x 1P	32.5	6	39	10
40	14	21.7	9	53.5	1/8"	5.2	7.0	M10 x 1.25P	35	5.7	12	8.5	12.0	M6 x 1P	38.0	6	41	10
50	16	22.8	11	63.5	1/8"	6.8	7.0	M12 x 1.25P	35	6.8	16	9.5	12.0	M8 x 1.25P	46.5	8	43	13
63	16	22.8	11	77.0	1/8"	6.8	7.0	M12 x 1.25P	39	6.8	16	10.0	12.0	M8 x 1.25P	56.5	8	47	13
80	22	25.0	14	95.0	1/8"	8.5	6.5	M16 x 1.5P	43	9.0	20	11.0	15.0	M10 x 1.5P	72.0	8	51	17
100	28	25.0	14	113.0	1/4"	8.5	7.0	M20 x 1.5P	52	9.0	25	13.5	16.5	M10 x 1.5P	89.0	10	62	22

Note : Subject to change without prior notice

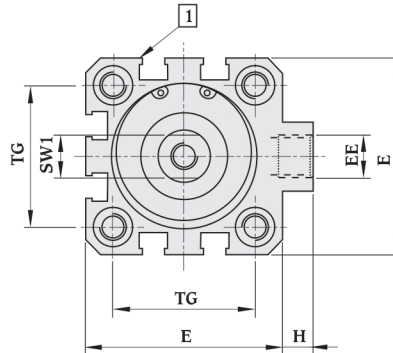
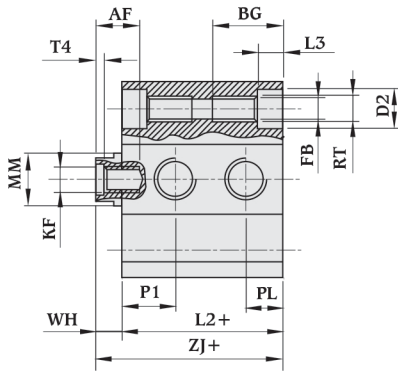


Short Stroke Air Cylinders - Double-Acting Female Thread (with magnetic piston)



Basic Dimensions

Type : SSC - DA - FT - MG



+ = Plus stroke length

1 = Sensor groove for reed switches

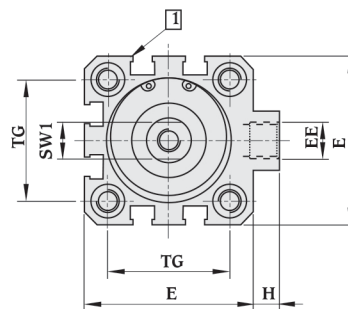
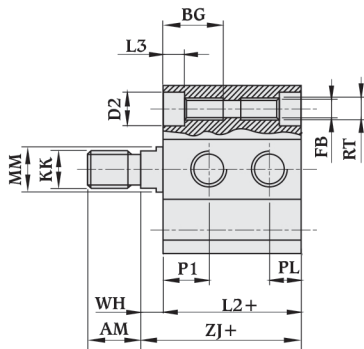
All dimensions in mm unless otherwise specified

Piston dia mm.	AF min.	BG min.	D2 Ø	E max.	EE BSP	FB Ø	H	KF	L2	L3	MM Ø	PL	P1	RT	T4	TG	WH	ZJ	SW1
25	10	18	7.5	40	M5	4.2	1.5	M5 x 0.8	39.5	4.5	10	7	7	M5 x 0.8	-	26	5.5	45.0	8
32	12	21.7	9	45.0	1/8"	5.2	7.0	M 6 x 1P	33.0	5.7	12	8.5	10.0	M 6 x 1P	2.6	32.5	6	39.0	10
40	12	21.7	9	53.5	1/8"	5.2	7.0	M 6 x 1P	35.0	5.7	12	8.5	12.0	M 6 x 1P	2.6	38.0	6	41.0	10
50	16	22.8	11	63.5	1/8"	6.8	7.0	M 8 x 1.25P	35.0	6.8	16	9.5	12.0	M 8 x 1.25P	3.3	46.5	8	43.0	13
63	16	22.8	11	77.0	1/8"	6.8	7.0	M 8 x 1.25P	39.0	6.8	16	10.0	12.0	M8 x 1.25P	3.3	56.5	8	47.0	13
80	20	25.0	14	95.0	1/8"	8.5	6.5	M 10 x 1.5P	43.0	9.0	20	11.0	15.0	M 10 x 1.5P	4.7	72.0	8	51.0	17
100	24	25.0	14	113.0	1/4"	8.5	7.0	M 12 x 1.75P	52.0	9.0	25	13.5	16.5	M 10 x 1.5P	6.1	89.0	10	62.0	22

Short Stroke Cylinders - Double-Acting Male Thread (with magnetic piston)

Basic Dimensions

Type : SSC - DA - MT - MG



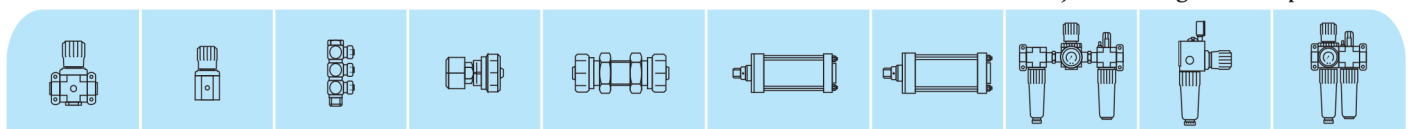
+ = Plus stroke length

1 = Sensor groove for reed switches

All dimensions in mm unless otherwise specified

Piston dia mm.	AM -0.5	BG min.	D2 Ø	E max.	EE BSP	FB Ø	H	KK	L2	L3	MM Ø	PL	P1	RT	TG	WH	ZJ	SW1
25	14	18	7.5	40.0	M5	4.2	1.5	M10x1.25P	39.5	4.5	10	7	7	M5 x .08	26	5.5	45.0	8
32	14	21.7	9	45.0	1/8"	5.2	7.0	M10x1.25P	33.0	5.7	12	8.5	10.0	M 6 x 1P	32.5	6	39.0	10
40	14	21.7	9	53.5	1/8"	5.2	7.0	M 10 x 1.25P	35.0	5.7	12	8.5	12.0	M 6 x 1P	38.0	6	41.0	10
50	16	22.8	11	63.5	1/8"	6.8	7.0	M 12 x 1.25P	35.0	6.8	16	9.5	12.0	M 8 x 1.25P	46.5	8	43.0	13
63	16	22.8	11	77.0	1/8"	6.8	7.0	M 12 x 1.25P	39.0	6.8	16	10.0	12.0	M8 x 1.25P	56.5	8	47.0	13
80	22	25.0	14	95.0	1/8"	8.5	6.5	M 16 x 1.5P	43.0	9.0	20	11.0	15.0	M 10 x 1.5P	72.0	8	51.0	17
100	28	25.0	14	113.0	1/4"	8.5	7.0	M 20 x 1.5P	52.0	9.0	25	13.5	16.5	M 10 x 1.5P	89.0	10	62.0	22

Note : Subject to change without prior notice

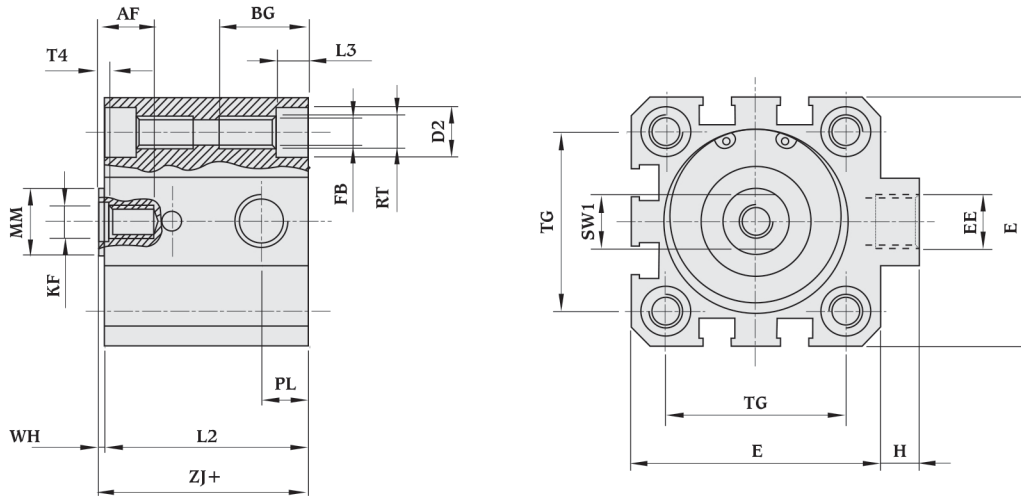


Short Stroke Air Cylinders Single-Acting Female Thread

Basic Dimensions



Type : SSC - SA - FT

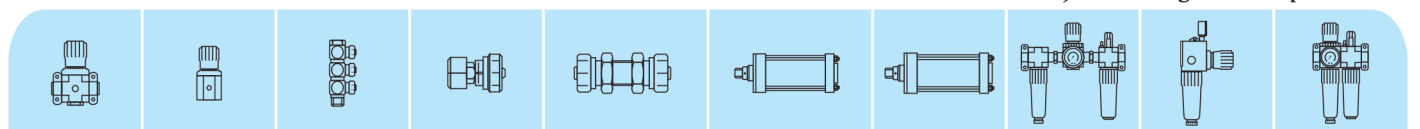


+ = Plus stroke length

All dimensions in mm unless otherwise specified

Piston dia x Stroke	AF min.	BG min.	D2 Ø	E max.	EE BSP	FB Ø	H	KF	L2	L3	MM Ø	PL	RT	T4	TG	WH	ZJ	SW1
25 x 5	10	18	7.5	40	M5	4.2	1.5	M5 x 0.8	45	4.5	10	7	M5 x 0.8	-	26	5.5	50.5	8
25 x 10									50								55.5	
25 x 25									65								70.5	
32 x 5	12	21.7	9	45.0	1/8"	5.2	7.0	M6 x 1P	30	5.7	12	8.5	M6 x 1P	2.6	32.5	1.0	31	10
32 x 10									39								40	
32 x 25									54								55	
40 x 10	12	21.7	9	53.5	1/8"	5.2	7.0	M6 x 1P	40	5.7	12	8.5	M6 x 1P	2.6	38.0	1.0	41	10
40 x 25									60								61	
50 x 10	16	22.8	11	63.5	1/8"	6.8	7.0	M 8 x 1.25P	37.5	6.8	16	9.5	M8 x 1.25P	3.3	46.5	0.5	38	13
50 x 25									60								60.5	
63 x 10	16	22.8	11	77.0	1/8"	6.8	7.0	M 8 x 1.25P	37.5	6.8	16	10.0	M8 x 1.25P	3.3	56.5	1.0	38.5	13
63 x 25									60								61	
80 x 10	20	25.0	14	95.0	1/8"	8.5	6.5	M10 x 1.5P	56	9.0	20	11.0	M10 x 1.5P	4.7	72.0	1.0	57	17
80 x 25									71								72	
100 x 10	24	25.0	14	113.0	1/4"	8.5	7.0	M12 x 1.75P	62	9.0	25	13.5	M10 x 1.5P	6.1	89.0	1.0	63	22
100 x 25									77								78	

Note : Subject to change without prior notice

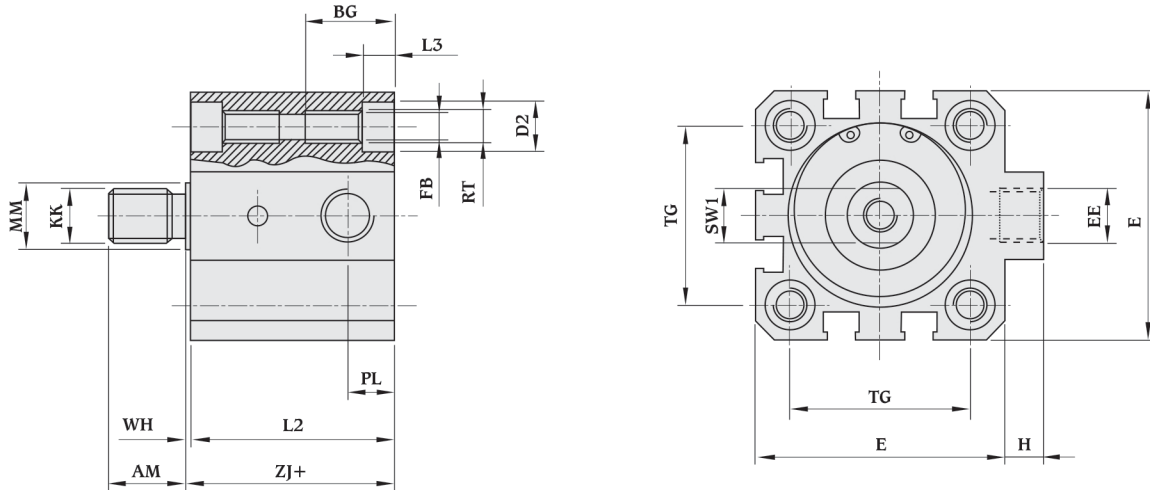


Short Stroke Air Cylinders Single-Acting Male Thread



Basic Dimensions

Type : SSC - SA - MT



+ = Plus stroke length

All dimensions in mm unless otherwise specified

Piston dia Stroke mm.	AF -0.5.	BG min.	D2 Ø	E max.	EE BSP	FB Ø	H	KK	L2	L3	MM Ø	PL	RT	TG	WH	ZJ	SW1
25 x 5	14	18	7.5	40	M5	4.2	1.5	M10 x 1.25	45	4.5	10	7	M5 x 0.8	26	5.5	50.5	8
25 x 10									50							55.5	
25 x 25									65							70.5	
32 x 5	14	21.7	9	45.0	1/8"	5.2	7.0	M10 x 1.25P	30	5.7	12	8.5	M 6 x 1P	32.5	1	31	10
32 x 10									39							40	
32 x 25									54							55	
40 x 10	14	21.7	9	53.5	1/8"	5.2	7.0	M10 x 1.25P	40	5.7	12	8.5	M 6 x 1P	38.0	1	41	10
40 x 25									60							61	
50 x 10	16	22.8	11	63.5	1/8"	6.8	7.0	M12 x 1.25P	37.5	6.8	16	9.5	M 8 x 1.25P	46.5	0.5	38	13
50 x 25									60							60.5	
63 x 10	16	22.8	11	77.0	1/8"	6.8	7.0	M12 x 1.25P	37.5	6.8	16	10.0	M8 x 1.25P	56.5	1	38.5	13
63 x 25									60							61	
80 x 10	22	25.0	14	95.0	1/8"	8.5	6.5	M16 x 1.5P	56	9.0	20	11.0	M 10 x 1.5P	72.0	1	57	17
80 x 25									71							72	
100 x 10	28	25.0	14	113.0	1/4"	8.5	7.0	M20 x 1.75P	62	9.0	25	13.5	M 10 x 1.5P	89.0	1	63	22
100 x 25									77							78	

Note : Subject to change without prior notice

