

AN ISO 9001:2008 CERTIFIED COMPANY



SHEET METAL WORKS PVT LTD

COMPLETE SHEET METAL SOLUTION



INTRODUCTION

BACKGROUND

Based in the Pune (Bhosari MIDC, Maharashtra) Elite Sheet Metal Works is ideally situated to provide a nationwide service. With a highly experienced team, the company has built its reputation on providing a reliable, friendly service.

CAPABILITY

Elite is committed to investing in the latest laser cutting technology. Our skilled team use 'state of the art' high speed laser cutters, plus CNC press-brake bending & CNC Turret Punching machinery. We provide a consistently accurate laser cutting service as well as turret punching plus bending from one off to full scale production quantities..

METALS & MATERIALS

Elite has the technical knowledge and experience to work with a wide range of metals. However, the most frequently used metals are Mild steel, Stainless steel, Galvanized iron and Aluminum.

QUALITY

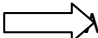
Accredited to ISO9001:2008 standard, Elite regards quality as a core issue.



OUR VISION

- To provide complete solution to customer requirements.
- To capture a significant market share in the business of Metal Fabrication
- To nurture and maintain ethical values.
- To Focus on quality in every business process.
- To foster Continual improvement in our in-house systems
- Industries Targeted : We target to a wide range of industries like Railways, Aerospace, Defense, Earthmoving Equipment, Automotive, Electrical Switchgear, Chemical & Food Processing, Power Plant, Telecommunication and Instrumentation, Textile & General Engineering.

SALIENT FEATURES OF ELITE

- ✓ Complete Engineering Solutions provided under one roof.
- ✓ Versatile Resource Pool to handle variety and complexity.
- ✓ Ability to handle low to high production quantities.
- ✓ Competent & Experienced Teams.
- ✓ Advanced technology with CNC Laser, CNC Punching, Bending and Fabrication.
- ✓ Your idea ve materialize.



FACILITIES AT ELITE SHEET METAL WORKS

- LASER CUTTING MACHINE
- CNC-TURRET PUNCH
- CNC-PRESS BRAKE
- WELDING MACHINES

If you are working on a design or industrial project then Laser Process has expertise of collaborating with virtually every manufacturing industry. We can successfully work to custom design specifications meeting our clients individual requirements and can follow a strict schedule. As a company we constantly update our procedures and invest in the latest technology to ensure our design projects are of the highest standards, quality control is of the utmost importance. We are able to achieve this as our steel fabricators use CNC press-brake bending machinery and high speed laser cutters to give a consistently accurate cutting service. As a result, with our laser cutting machines and CNC laser we are able to offer laser engraving, sheet metal fabrication and laser cutting services of an unmatched standard. From one-off to full-scale production projects we are able to complete all manner of laser cutting jobs, primarily working with mild steel, stainless steel and aluminium.

We know how important design support and project management is, so we ensure that we have an open dialogue with our laser cutting customers gaining their feedback throughout the whole design process. This involves:

- Providing detailed technical advice where required
- Accepting data in any format including; drawings, templates, DXF and DWG files
- Using supplied data to generate CAD/CAM designs
- Supplying chain collaboration
- Supplying to schedules, including Kanban and JIT
- Offering rapid turnaround, within a few hours, when required

CNC-LASER CUTTING :



TRUMPF MAKE LASER MACHINE L3030 / 4 KW

Bed Size :-1500mm x 3000mm

MS Cutting capacity up to 18 mm

SS cutting capacity up to 12 mm (with O2 & N2)

Accuracy :- 0.05 mm

The Laser cutting technology provides some unique benefits as follows :

- Low production cost & fast productivity.
- No tooling cost like dies, jigs / fixtures not required.
- Changes in part design can be incorporated very easily.
- Less scrap due to consistent accuracy, so it is most economical.
- Excellent edge quality with finish accuracy and reliability.
- Fast working on complex shape / design and drawings.
- Greater material utilization and reduction in material waste.

CNC-TURRET PUNCH :



AMADA MAKE TURRET PUNCHING PEGA 357

Bed Size :- 2500mm x 1250mm

Capacity : 30 TON Stations : 44

MS Capacity upto 5mm

SS Capacity upto 3mm

AL Capacity upto 4mm

2 Auto-index

C Station 3

D Station 2

E Station 2

CNC Press-Brake/ Bending Machine :



YAWEI MAKE CNC Hydraulic Press-Brake

Machine Model: PBB - 220 / 3100-3C

Main technical specifications:

Nominal pressure 220 Ton

Length of worktable 3100 mm

Distance of upright 2600 mm

Ram stroke 215 mm Throat depth 410 mm

Die setting height 530 mm



Fabrication :



The **Sheet Metal Fabrication** services that we provide are certified under ISO 9001:2008.

After going through the specifications of the clients, we render Sheet Metal Fabrication services that exactly match the preferences of the customers. Furthermore, the capabilities that we possess ranges from design enhancement, laser, programming to punch, hardware insertion, press brake, welding, deburring , grinding, screen-printing, and many others. In addition to this, the Sheet Metal Fabrication services offered by us are of great usage for Telecommunications, Construction, Military, Medical, Hospitality and other industries. We have in-house welding facilities.



Certificate of Registration

Certificate No: 150312019153

This is to Certify that the Management System of the

Elite Sheet Metal Works Pvt. Ltd.

Registered office address:- Fl. No.904, Wing I, Sr. No. 59, Near Express Highway,
Ambegaon, Pune 411046, Maharashtra India.

Registered workshops address:- Plot No.- 76, Sector No.10, PCNTDA, Bhosari,
Tal-Haveli, Dist- Pune, Maharashtra India.

*Has been assessed and found to be in accordance with the requirements of
standard detailed below*

ISO 9001:2008

This Certificate is valid for the following scope

**“Manufacture of Sheet Metal Parts, Assemblies &
Products As Per The Customer Requirement”**

Initial Registration Date	12 th Mar. 2015
Issue Date	12 th Mar. 2015
Valid Until	11 th Mar. 2018

To check validity of the certificate please
visit www.isoindia.org or call at given numbers



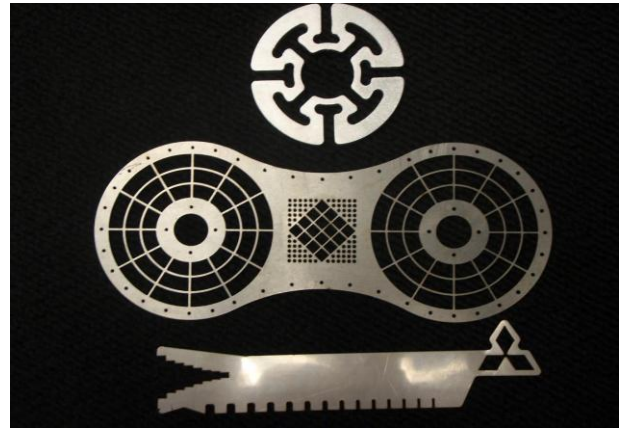
[Signature]
Managing Director
TNV Certification Pvt Ltd.
Accredited by Dubai
Accreditation Center (DAC)

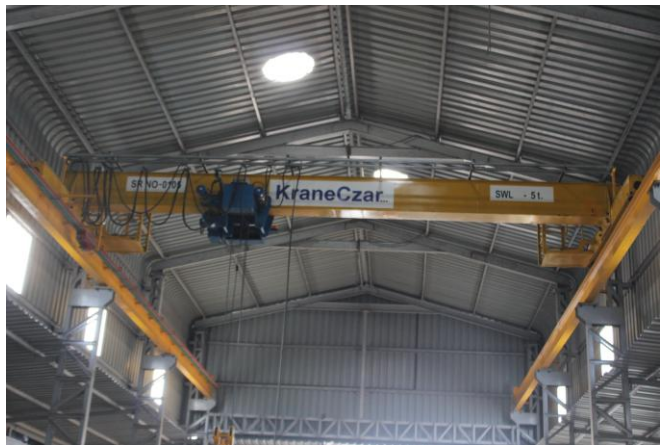
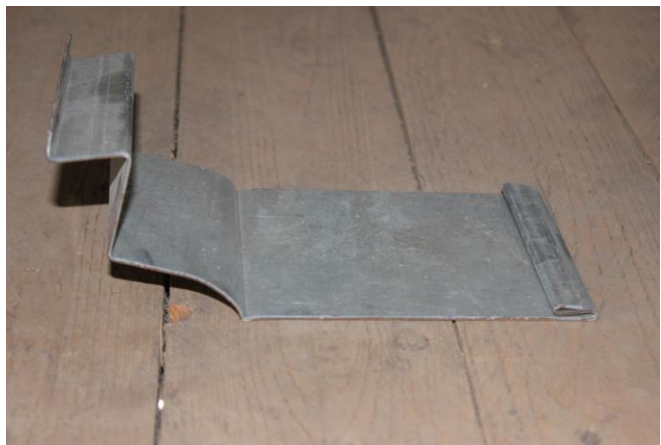
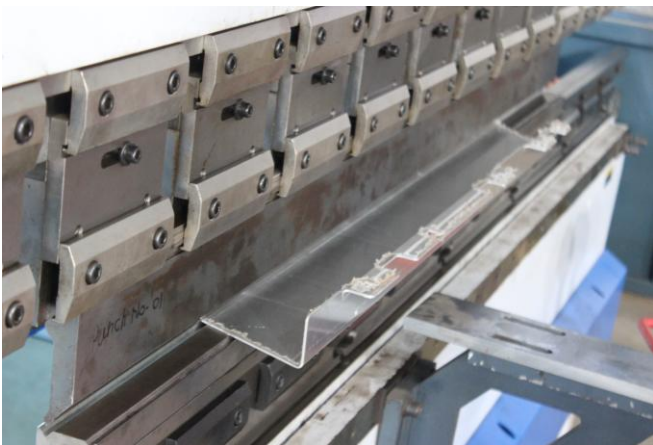
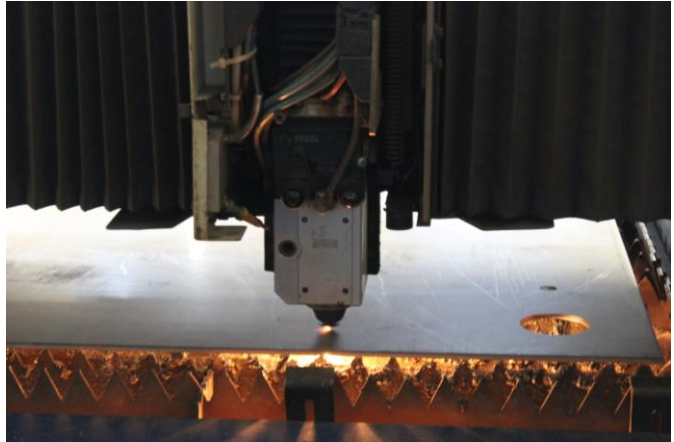
HO: 537-B/187-B, Amber Vihar, Near Central Bank of India, Keshav Nagar, Sitapur Road, Lucknow- 226020 (UP) India

Ph: +91-522-2756327-328, Fax: +91-522-2759881, email:- info@isoindia.org, www.isoindia.org

* Validity of the certificate is subject to successful completion of surveillance audits. Further clarification regarding the scope of this certificate and the applicability of standard may be obtained by consulting the organisation.
This certificate remains property of TNV Certification P Ltd and must be returned on request. URL of the Dubai Accreditation Center is <http://www.dac.ae>. For surveillance details, please visit www.isoindia.org

PHOTO GALLERY







OFFICE ADDRESS

ELITE SHEET METAL WORKS PVT LTD

PLOT NO- 76, SECTOR NO-10, PCNTDA, BHOSARI. PUNE.

TAL-HAVELI DIST-PUNE, MAHARASHTRA. 411026 INDIA.

CONTACT

Office : (0)2066332604 Plant In-charge : (0)8975940101

Plant Head : (0)7720092954 Director : (0)8888870505

MAIL

Sales : navneetesmw@gmail.com | sachin.esmw@gmail.com

Director : eliteindustriesindia@gmail.com |