

## Drains

IEWI offer a versatile range of floor drains suitable for light to medium duty load, which incorporate advanced design, high quality and ease of installation - all at extremely competitive prices.

To complete the line of drains, it also offers a range of gulleys and trenches all in stainless steel

The unique seal design prevents foreign particles /cockroach present in the discharge pipe from entering back in to the sterile areas .

### **Application :**

Floor Drains used for the drainage of floor areas and/or discharge of water / process liquids in

- i] Showers
- ii] Handicapped Showers
- iii] Toilets
- iv] Changing Rooms
- v] Washdown areas (e.g food production)
- vi] Laboratories

The range of Floor Drains is suitable for concrete floors or floors with tiled finishes.

Being of high quality finish, Floor drains and clean outs are also used where an aesthetically pleasing appearance is of paramount importance.

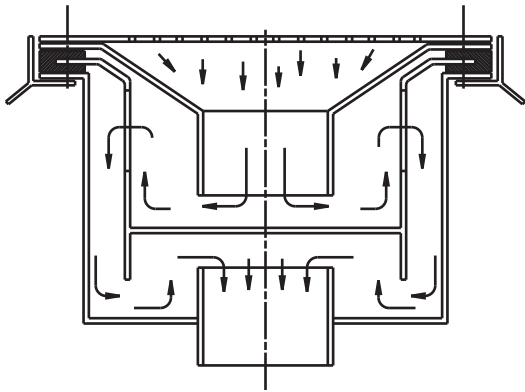
### **Designs**

Drains are offer in two designs viz

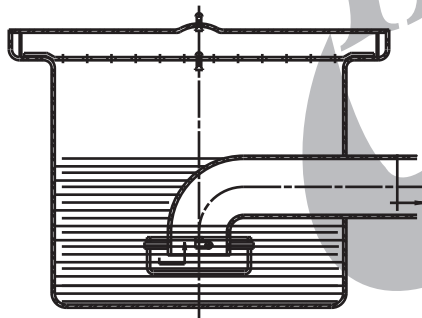
- 1) Single seal suitable for thin slabs (first floor and higher floors )
- 2) Double seal designs suitable for thick slabs (Ground floor)

### **Finish**

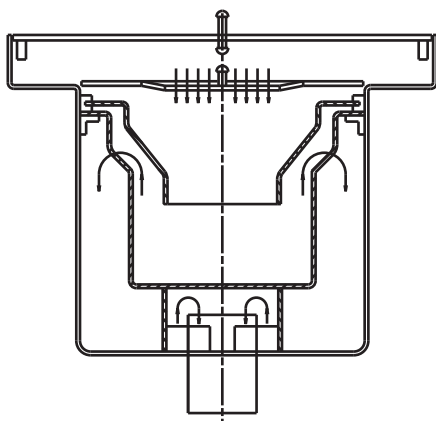
The floor drains can be electropolished or chemically descaled (acid pickled) in order to enhance the natural corrosion resistance and provide a uniform matt finish.



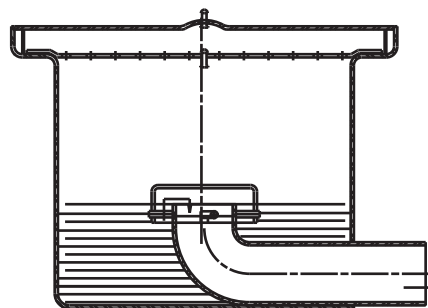
FLOOR DRAIN DOUBLE SEAL



FLOOR DRAIN SINGLE SEAL



FLOOR DRAIN DOUBLE SEAL



FLOOR DRAIN SINGLE SEAL