



Hilden Packaging Machines Pvt. Ltd.

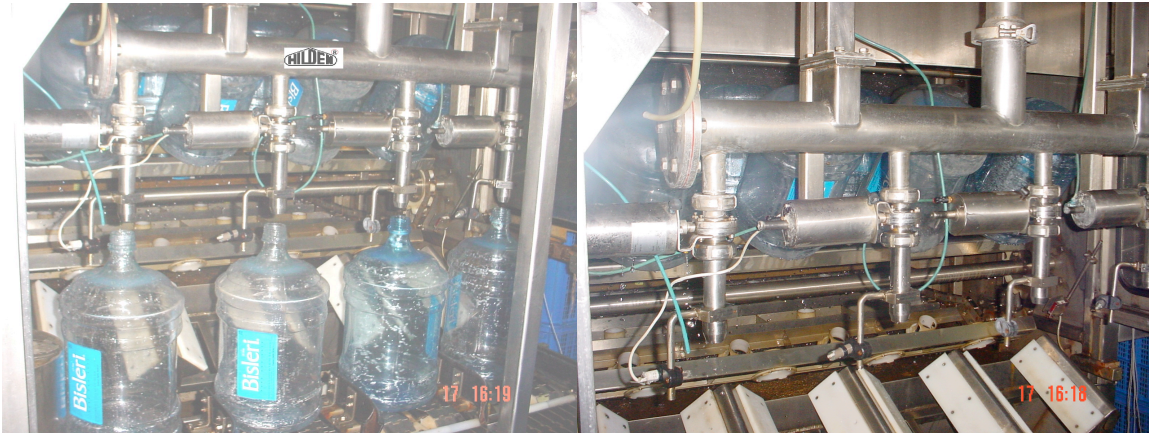
PLOT 101,ROAD 16, M.I.D.C, MAROL, ANDHERI (EAST), MUMBAI – 400 093.

ANDHERI (EAST), MUMBAI – 400 093.

TEL: (91) (022) 3088 0900 / 01 / 28322251 ; FAX : (91) (022) 3088 0929 / 28381248

E-mail :info@hilden.in, hilden@vsnl.com , hilden100@gmail.com

20 LITRE – JAR RINSER / FILLER / CAPPER. 480 JARS PER HOUR.



| | | | | |
|--------------------------|---|--|----------|------------------------|
| Overall Dimension | : | Length | : | 8 mtr. |
| | | Height | : | 2.2 mtr. |
| | | Width | : | 1.25 mtr |
| Operating Cycle | : | 2 Discharge per minute. | | |
| No. of Jars Width | : | 4 | | |
| Rinsing System | : | Pre-Rinse | 1 Cycles | 25 Secs. |
| | | Detergent Wash | 4 Cycles | 100 Secs. (at 85/90 C) |
| | | Hot-Waterl Rinse | 2 Cycles | 25 Secs. |
| | | Pre-Final Rinse | 1 Cycles | 25 Secs. |
| | | Final Rinse | 1 Cycle. | 25 secs. |
| Filling System | : | 4 Filling Nozzles working under pressure. | | |
| Capper | : | Single head pneumatic capper. | | |
| Hopper | : | Vibratory Hopper, feeding caps on jar mouth through chute. | | |

Power Consumption: Main Motor : 2 HP.
Pre-final Rinse Pre-rinse Pump) 1.5 HP.
Detergent Wash Pump : 2 HP.
Hot Water Rinse : 1.5 HP.

Air Consumption : Dry Filtered Air @4 bar, 5 lpm.

Control System : Main Motor with Inverter Drive, indexing the rinsing conveyor by PLC programme. Filling nozzle and capper controlled by PLC.

Description :

The empty Jars from the Brush Washing Machine are brought by the Conveyor on to the Rinser and loaded automatically into the Stainless Steel carrier having plastic Jar holders. This Carrier and main conveyor chain are similar to the Soft Drink Bottle Washer Carrier and Chain.

The Rinsing Nozzle pressure is 2.5 bar (40 psi) after the rinsing jars are automatically discharged and pushed over to the filling stations.

At the filling stations three positive pressure filling nozzles with bottom closing design are lowered into the jar mouth up to preset level and filling starts by PLC Control.

FILLING VALVE IS A SPECIAL DESIGNED LATEST STATE OF THE ART SYSTEM PLUNGING TYPE FILLING VALVE WITH NO OVERFLOW AND ACCURATE FILL LEVEL CONTROL WITH NO WATER WASTAGE AT ALL ANY OVERFLOW THE WATER WILL BE SAVE SAVED DUE TO THIS SPECIAL VALVE DESIGN IT WILL BE TAKEN BACK TO THE PRE FINAL WASH TANK .

After the Filling cycle is completed the conveyor under the filling stations will start by PLC controller and jars will be moved out and during the passage of the filling stations each jar will pick up one jar from the chute. The caps are washed by Ozonated Water and also blown by sterile air before applying on the jar mouth duly capped; jars will be discharged on the conveyors for palletizing.

The Filling and capping area is covered by prospect that in Stainless Steel frame and appropriate gaskets to create positive pressure clean air chamber.

For Hilden Packaging Machines Pvt. Ltd.,

**R J OSWAL
DIRECTOR.**