



Complete Protections



GUJAR INDUSTRIES

(Machine Tools Protection Equipment Division)

Gat No.188 Jyotiba Nagar, Talawade Road, Talawade Pune – 411062 .
Maharashtra, INDIA.

sales@gujarindustries.com, gujarindustries@gmail.com

Cell : +91 (0)20 3240 4221, +91 (0)9960 338 833, +91 (0)9657 440 677, +91 (0)9657 784 266

COMPANY PROFILE

Started operating in 2005, GUJAR INDUSTRIES is a leading manufacturer and supplier of Bellows, Telescopic Covers, Steel Railway Covers, Apron Covers and Way Wipers, conveyors, Control Panel enclosures. Renowned for manufacturing and supplying above mentioned products, it is capable enough to deliver the finest engineering solutions for Machining Centers, Heavy Duty Equipments and CNC Machines. The complete range of products is developed using top quality raw materials, sourced from reputed manufacturers and suppliers. Our Apron Machine Cover, Cleaning Wiper, and Industrial Bellows are available at very cost effective rates, suitable to customers' budget affordability. Through our unrelenting efforts to offer ultimate satisfaction to our customers, we have attained a position of high repute in the industry.

IMPECCABLE QUALITY

Bearing in mind the paramount importance of superb high performance of product, many quality parameters of national as well as international standards are followed according to customers' specific requirements. Right from the procurement of raw material to the delivery of fine finished products, a team of QC (Quality Check) Experts monitor the quality of these products. Also, they are passed through various physical tests to examine and enhance the durability and their performance.

OUR FACILITIES

We are engaged in offering, Laser Cutting, CNC Bending, Co2 Welding, Spot Welding, Drilling, Buffing, Polishing Services as per the requirements of our clients. Various machines are used for the cutting of metals and material like glass, stones, ceramics and marble of varying ranges. Our machine has the latest technology for metal cutting and fabrication with improved features. We have two CNC Bending Machines in compliance with dimensional specifications and designs as per the requirements of the clients. Furthermore, we assure the quality, accuracy and low maintenance requirement of our services.

TELESCOPIC COVER

Telescopic covers are generally produced from cold-rolled uncoated thin plates in thicknesses from 1 to 3 mm.

Wherever guideways on machines have to be protected, we have a suitable solution. Our guideway protections systems boast a high degree of operational reliability, a long service life, and make use of innovative technical solutions in vertical & cross rail application.

GUJAR INDUSTRIES Telescopic covers are sturdy, most durable & designed with easily replaceable highly anti wear polyurethane & synthetic rubber wipers, dampers, phosphor bronze / engineering plastic guide shoes

Wiper systems in various designs for fast-running telescopic covers

- >> Rollers / sliders
- >> Lifting element
- >> Locking system
- >> Synchronising device (harnesses)

DESIGNS

Machine tools come in a wide variety of designs. That is why a modern lathe needs another type of telescopic cover than, for example, a large bed-type milling machine. The following designs provide an overview of typical designs.

FLAT SHAPE TELESCOPIC COVER

The U-shaped design is generally used in a horizontal, lying position for milling table guides. With this design the maximum width of the telescopic cover should be limited to 1.5 m.



ROOF SHAPE TELESCOPIC COVER

This design is always advisable when cooling lubricants are used. The inclined surface allows the water – and naturally also the chips – to run off more easily. With large covers (> 3 m width) for reasons of stability, etc. at least three roof angles should be provided.



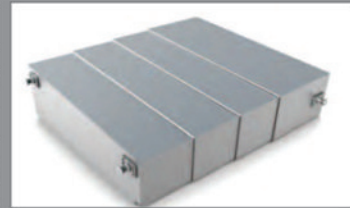
FLATTENED ROOF SHAPE TELESCOPIC COVER

The flattened roof shape is a special construction method with two roof angles. Primarily for dry operation and widths > 3 m.



TELESCOPIC COVER WITH SHAPE INCLINE TO ONE SIDE

The shape with incline to one side has a special roof shape. Depending on the possible incline, covers can be constructed with widths of up to 1.5 m. This shape is likewise a recommended solution when large amounts of coolant are present. Depending on the angle of incline, this form also helps to discharge coolants / chips.



VERTICALLY INSTALLED TELESCOPIC COVER

Standing covers are used on larger machine tools, mostly in the area above and below the cross beam. They can take many different shapes.



BLIND TELESCOPIC COVER

With blind telescopic covers, the cover plates move in separate guide rails, each of which is mounted on the machine at the sides. It is used exclusively in a vertical arrangement. The guide rails are generally made of brass.



CROSS-BEAM TELESCOPIC COVER

These covers are predominantly used on large gantry machine tools on a cross beam to the left and right of the support. The boxes are suspended vertically and protect the support guides from chips and cooling lubricants.

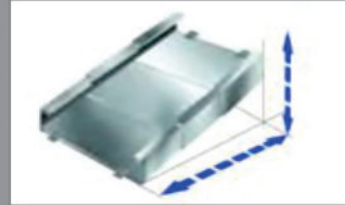


TUBULAR COVER, POLYGONAL COVER

Tubular covers or covering shafts, spindles, etc. They can be made either with a round or a polygonal shape.

DUAL-AXIS MOTION

Dual-Axis covers are typically moving behind the tables and under the spindle when space is limited. This design is limited to 3 boxes unless guide rails are used, and must be flat design for this style of cover.



DAMPING ELEMENTS FOR COMPRESSION

Damping elements that only work during expansion require an additional element for compression. Here simple rubber buffers mounted at an appropriate point on the rear wall have proven themselves over many years.



TELESCOPIC COVERS WIPERS

G2

- >> G2 is designed for minimal cover extension / compression lengths
- >> Replaceable wiper lips
- >> Minimal horizontal space required
- >> Also available with a rubber profile vulcanized on the profiled support (shown), for optimum damping properties at high traverse speeds



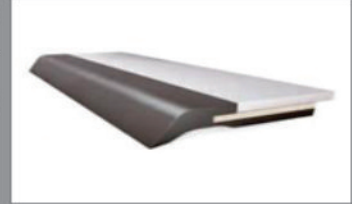
G3

A specially-milled steel plate profile is spot-welded to the boxes and a PUR wiper lip is inserted. Necessary calculated distance of the cover plates 3.5 to 5.5 mm.



G4

These wipers consist of an NBR profile vulcanized onto a steel strip. Necessary calculated distance of the cover plates 2.5 to 3.5 mm.



PLASTIC ROLLERS

Gentle rolling on the guideway

>> For low travel speeds



STEEL ROLLERS

For high support loads

>> For high travel speeds



PLASTIC SLIDERS

Good sliding characteristics on the guideway

>> For high travel speeds

>> Can also be used for linear guides



BELLOW COVER

GUJAR INDUSTRIES

bellows are used on all kinds of machine to provide protection for guideway sand spindles, in those cases where no hot chips are present and accessibility is not a requirement. Bellows can be individually produced from a range of different materials, depending on your specific requirements.

Machine tools come in a wide variety of designs. That is why a modern lathe needs another type of telescopic cover than, for example, a large bed-type milling machine. The following designs provide an overview of typical designs.

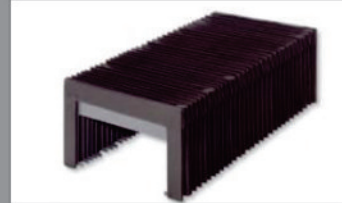
PROPERTIES

- >> Simple installation
- >> High travel speed
- >> Minimal compression
- >> High quality

DESIGNS

U-BELLOWS DESIGN

- >> Variable dimensions
- >> Customized in the guide
- >> Economically priced



BOX BELLOWS DESIGN

- >> Covering for movable machine elements
- >> High form stability



U-BELLOWS DESIGN WITH LAMELLAS

- >> Reliable protection against heavy chip generation
- >> Rust-resistant and acid-resistant telescopic plates
- >> Can be made coolant-proof upon request
- >> Rigid or movable design of the telescopic plates is possible



POLYGON BELLOW COVERS

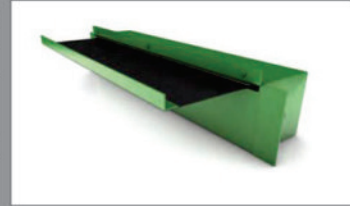
GUJAR INDUSTRIES Polygon Bellows are constructed by using P.U. coated fabric available in 4-6-8 angles . Polygonal Bellows in split form with velcro / tiny press buttons are most popular because it can be mounted without dismantling the mating part & saves valuable down time.



ROLL-UP COVER

GUJAR INDUSTRIES roll-up covers serve to protect contact surfaces and guideways on all kinds of machine.

- >> Very good protection against cutting waste, oil and cooling emulsions
- >> Rust-resistant and acid-resistant spring band steel with thickness from 0.2 to 0.4 mm
- >> Suitable for high travel speeds and greater mechanical loads
- >> Only available with housing



APRON COVER

GUJAR INDUSTRIES Link apron covers can be used anywhere where, for reasons of space, it is not possible to use telescopic covers. They lie directly on the guideways and can hang down freely at the end of the path, or be screwed on or wound around without any special guides.

Properties

- >> Small space requirement
- >> Protection against chips and lubricant
- >> Splash- and hose-proof
- >> Low weight
- >> Long service life
- >> Heat-resistant to 100 °C over extended Periods Customized end attachment
- >> All link apron covers can be supplied with a roller device
- >> Lateral guides are not necessary
- >> Short delivery time
- >> Attractive price/performance ratio



THE CLEANUP CREW ON GUIDEWAYS

Way wipers are essential to keep the guideways in a proper functional state, and thus to keep the machine tool permanently in operation.

WAY WIPERS IN A MODULAR SYSTEM – THE CLEVER SOLUTION

The most economical alternative to cast wiper

PROPERTIES

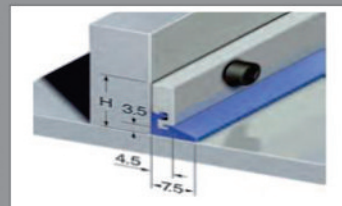
- >> Temperature range -40 °C to 100 °C
- >> Support material: Aluminium
- >> Wiper lip material: Polyurethane
- >> Largely resistant to oils, greases, alkalis and water
- >> Pretension approx. 2 mm
- >> Replaceable wiper lip
- >> Standard length of bar material: 1000 mm



DIMENSIONS AND TYPES

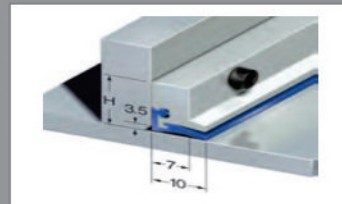
TYPE GA

Way wipers of this type are used mainly in those cases where installation conditions are restrictive, or where the wipers are additionally protected by means of a telescopic cover, a bellows, a link apron cover, or where no chips occur.



TYPE GAS

In this type series, the light metal support provides protection for the wiper lip. It is used primarily in the case of direct incidence of chips (no hot chips).



G1 and G2

Steel Casing + Polyurethane Lip :

These are the best Way Wipers available. They have total PU Lip protection due to Steel Casing (Frame). The Steel casing can be Drilled to suit yours specific needs & easily fitted to the moving slide / table. These Way Wipers are available in standard lengths of 530 mm.



MACHINE ENCLOSURE

GUJAR INDUSTRIES Machine Enclosures are particularly used in large machines, and can be manufactured in accordance to the size specifications detailed for diverse equipment. Our enclosures are very effective in protecting machine parts from all kinds of damage. Moreover, these are available at extremely cost-effective prices.



CONTROL PANEL ENCLOSURE

We have in store for our clients a wide range of Control Panel Enclosures. The range is designed using high quality material and components sourced from trusted vendors of the market. Our products are easy to install and can be configured as per the needs of the clients.



SCRAPER / CHEAP CONVEYORS.

GUJAR INDUSTRIES Conveyors Transport of the material takes place via drivers which push the material along the floor of the housing towards the discharge. Cooling lubricants are collected in the conveyor housing and can be fed back into the machine circuit via an added-on container or a pumping unit. Our scraper conveyors can be used as standalone conveyors at machine tools or as linked conveyor systems. Depending on the design, the material to be conveyed is brought to the required height at a defined incline and then discharged.

THE SOLUTION FOR SMALL AND SHORT CHIPS:

- >> Frequently used for machining of non-ferrous metals
- >> Can also be used for very hard, short chips
- >> Casting chips, milling chips and sawing chips

STRUCTURE

Stable metal plate construction

- >> Standardized housing cross-section with variable width
- >> Robust worm gear motor with torque switching
- >> Customized discharge height
- >> Customized incline standards = 30°, 45° and 60°
- >> Floor mounting or as a push-in version into the machine base

ACCESSORY EXAMPLES

Motor monitoring systems with current monitoring relay

- >> Other overload safety devices(on request)
- >> Coolant container with pump station
- >> Direct electrical connection to your machine controller
- >> Other special solutions are available. Please do get in touch with us, we will be happy to advise you.



SERVICES

In this day of just in time inventories and production unplanned machine failure and its downtime due to the failure of way covers can cause major losses from idle laborers, overtime, missed deadlines and promise dates and lost of sales and profit.

We offer periodic scheduled preventive maintenance Program for your protection covers like telescopic covers, rollway covers, and apron covers. Bellow covers, way wipers, cable drag chains etc.

Our experienced technician will visit to your works as per schedule. During his visit he will open the cover, clean and lubricate the guide ways and cover he will inspect and replace perishable items like wipers, Guide shoes, rollers, and spring etc refit the cover on your equipment.

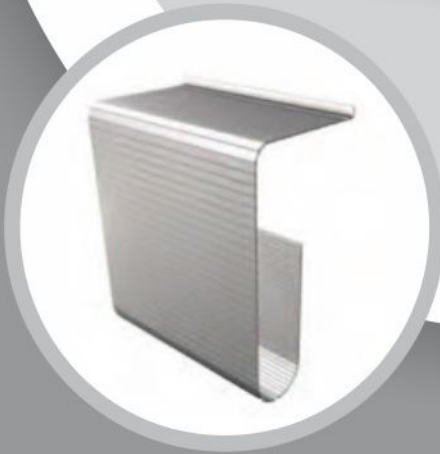
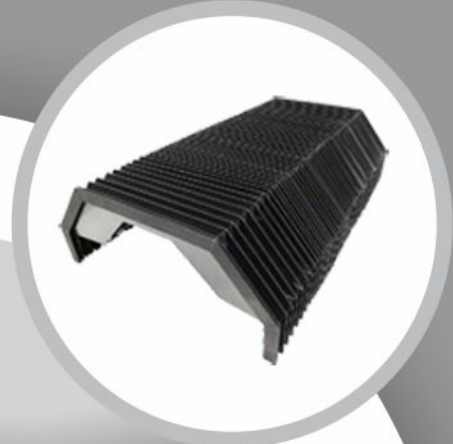
This preventive maintenance Program on of the covers on regular basis can definitely reduce the possibility of machine failures and unplanned downtime in your works.

SCOPE OF WORKS

- 1) Removal of the cover from the machine.
- 2) Cleaning & disassembly of covers.
- 3) Straightening of flanges& boxes.
- 4) Dent Removal
- 5) Replacement of lips & damaged metal casing
- 6) Replacement of ware out guide shoes & rollers
- 7) Replacement of ware out brass locking strips
- 8) Buffing & Polishing of boxes
- 9) Assembly of covers & Inspection
- 10) Oiling , greasing
- 11) Installation of the cover & tryouts.
- 12) SHORT DELIVERY TIME



GUJAR INDUSTRIES



GUJAR INDUSTRIES