

Drywalls

Project Case Studies



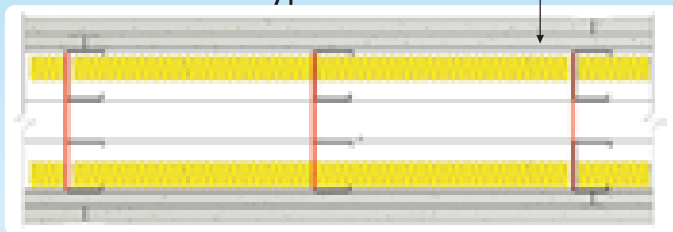
◆ **Architect: Archivista Engineering Projects Pvt. Ltd.**

◆ **Project Criteria**

- ◆ Wall height 13m
- ◆ Fast & Dry construction
- ◆ Impact resistance against trolley & machinery movement



2x12.5mm Gypboard® Plain



Solution Offered	Acoustic Rating	Fire Rating	Impact
200mm Gypwall® Classic	53 Rw dB	60Mins	Severe

◆ **Area of application**

- ◆ Dividing wall between production areas

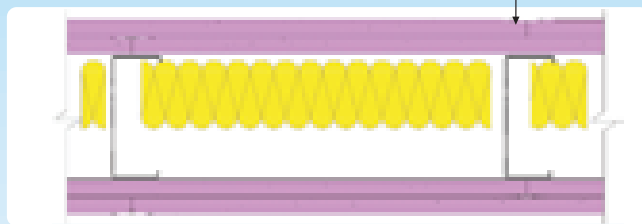
◆ **Architect: Archivista Engineering Projects Pvt. Ltd.**

◆ **Project Criteria**

- ◆ Wall height 13m
- ◆ Fire resistance for 2 hours
- ◆ Impact resistance against trolley & machinery movement



2x12.5mm Gyproc® Fireline

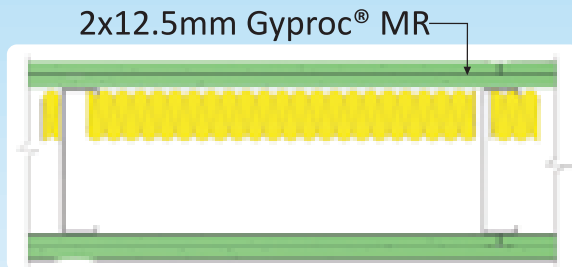


Solution Offered	Acoustic Rating	Fire Rating	Impact
198mm Gypwall® Fire Resist	51 Rw dB	60Mins	Severe

◆ **Area of application**

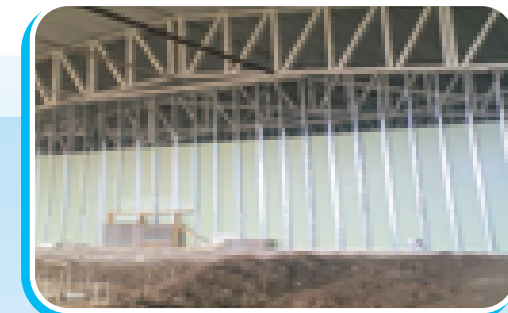
- ◆ Dividing wall between production areas

- ◆ **Architect: Archivista Engineering Projects Pvt. Ltd.**
- ◆ **Project Criteria**
 - Wall height 5m
 - Moisture resistance
 - Self standing partition



Solution Offered	Acoustic Rating	Fire Rating	Impact
198mm Gypwall® Hydro	53 Rw dB	60Mins	Severe

- ◆ **Area of application**
 - Dividing wall between production areas



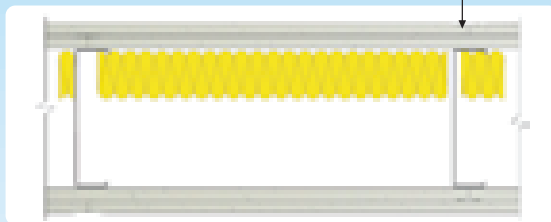
◆ **Architect: Prashant Deshmukh & Associates**

◆ **Project Criteria**

- ◆ Wall height 7m & 9.5m
- ◆ Fast construction



2x12.5mm Gypboard[®] Plain



Solution Offered	Acoustic Rating	Fire Rating	Impact
198mm Gypwall [®] Classic	51 Rw dB	60Mins	Severe

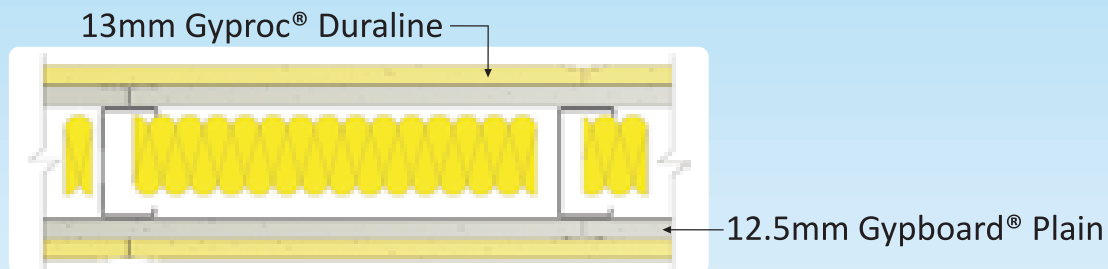
◆ **Area of application**

- ◆ Dividing wall between production areas

◆ **Architect: HK Architecture India Pvt. Ltd.**

◆ **Project Criteria**

- ◆ Fire resistance
- ◆ Fast & Dry construction

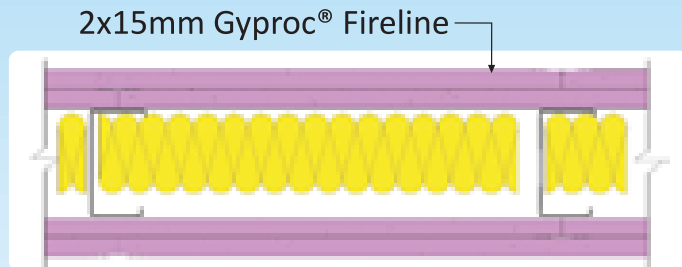


Solution Offered	Acoustic Rating	Fire Rating	Impact
123mm Gypwall® Partition	55 Rw dB	60Mins	Severe

◆ **Area of application**

- ◆ Partition inside shop floor
- ◆ Main corridor area

- ◆ **Architect: C. R. Narayana Rao**
- ◆ **Project Criteria**
 - ◆ Fire resistance
 - ◆ Fast & Dry construction



Solution Offered	Acoustic Rating	Fire Rating	Impact
132mm Gypwall® Fire Resist	50 Rw dB	120Mins	Severe

- ◆ **Area of application**
 - ◆ Partition inside shop floor