



An Efficient Answer to Ever Increasing Fuel Price

COMPANY INTRODUCTION

MAXIMA is a professionally managed fast growing group engaged in design and manufacture of IBR and Non-IBR Steam Boilers, Thermic Fluid Heaters, Hot Water Generators, Waste Heat Recovery Boilers, Steam Generator, Hot Air Generators and Allied Thermal Equipment.

Established in 1984 and incorporated as Private Limited Company with it's Manufacturing activities at Rabale, Navi Mumbai and Ambernath, Thane.

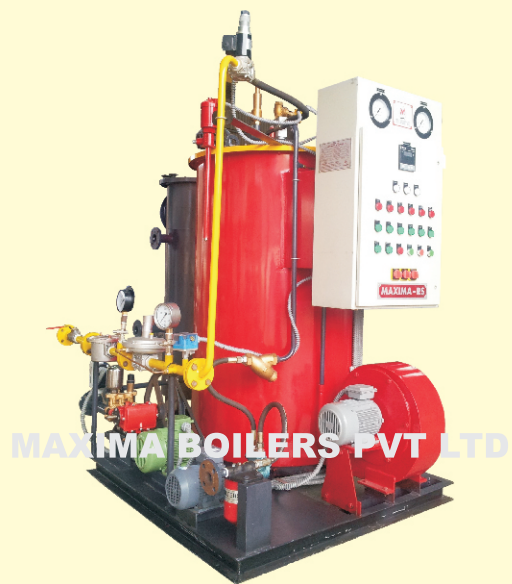
We undertake projects involved in our products on turnkey basis which includes design and supply of Boiler, Boiler Accessories, Steam Piping, Steam Accessories and Utility Piping etc.

STEAM BOILERS -

COIL TYPE – VRS SERIES

OIL/GAS FUEL FIRED Fully Automatic

Type	: Three pass, Vertical Coil Type
Capacity	: 15 to 1000 Kgs/hr (F&A 100 °C)
Working Pressure	: 10.54 Kg/cm ² to 21.0 Kg/cm ²
Fuel	: LDO/FO/GAS/Dual Fuel
Thermal Efficiency	: 88 ± 2% on NCV
Heat Recovery unit	: Economiser



STEAM BOILERS -

PACKAGED TYPE -SIB -MOS SERIES

THREE PASS, DRY BACK, FIRED SMOKE TUBE

Type	: Horizontal, 3 Pass, Smoke tube, Dry back Small Industrial Boiler
Capacity	: 300 to 600 Kgs/hr (F&A 100° C)
Working Pressure	: 7 Kg/cm ² (g)
Fuel	: LDO / FO / Gas / Dual Fuel (Oil cum Gas)
Thermal Efficiency	: 87 ± 2 % without HRU and 90 ± 2 % with HRU's
Heat Recovery Unit	: Water Preheater
Burner	: Fully Automatic Pressure Jet / (High-Low / Step-less Modulation); Indigenous / Imported Burners.

STEAM BOILERS -

PACKAGED TYPE – MAX - O/G/OG SERIES

OIL / GAS / DUAL-FUEL FIRED (Three Pass Smoke Tube IBR Steam Boiler)

Type	: Three pass, Fully Wet Back / Fully Automatic Steam Boilers
Capacity	: 0.6 TPH to 14 TPH (F&A 100°C) (Single Furnace) 15 TPH to 30 TPH (F&A 100°C) (Twin Furnace)
Working Pressure	: 10.54/14.00/17.5/21.00 Kg/cm ² and above
Fuel	: HSD/LDO/FO/GAS/Dual Fuel
Thermal Efficiency	: 90 ± 2% on NCV 95 ± 2% on NCV with HRU's
Heat Recovery unit:	: Economiser, Pressurised Economiser Air Preheater
Burner	: Fully Automatic (Indian / Imported) Monobloc Burner



STEAM BOILERS -

PACKAGED TYPE – MAX - O/G/OG SERIES

OIL / GAS / DUAL-FUEL FIRED (Three Pass Smoke Tube IBR Steam Boiler)

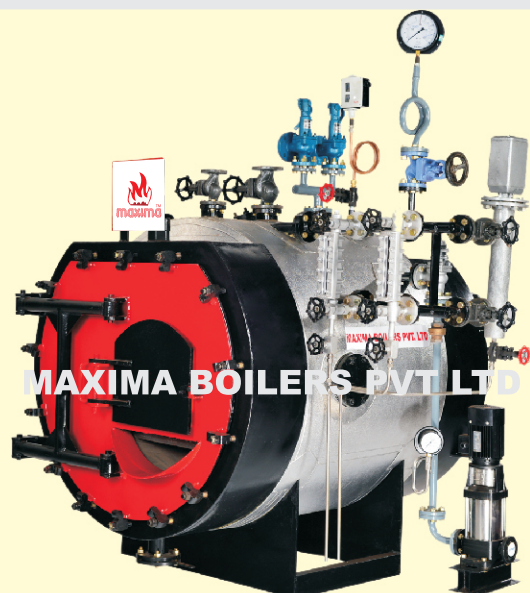
Type	: Three pass, Fully Wet Back, Fully Automatic Steam Boilers
Capacity	: 0.6 TPH to 14 TPH (F&A 100°C) (Single Furnace) 15 TPH to 30 TPH (F&A 100°C) (Twin Furnace)
Working Pressure	: 10.54/14.00/17.5/21.00 Kg/cm ² and above
Fuel	: HSD/LDO/FO/GAS/Dual Fuel
Thermal Efficiency	: 90 ± 2% on NCV 95 ± 2% on NCV With HRU's
Heat Recovery unit:	: Economiser, Pressurised Economiser Air Preheater
Burner	: Fully Automatic (Indian / Imported) Dual Block Burner

STEAM BOILERS -

PACKAGED TYPE – SIB - MCS SERIES

THREE PASS, DRY BACK, SOLID FUEL FIRED SMOKE TUBE

Type	: Horizontal, Three pass, Dry back, Small Industrial Boiler
Capacity	: 300 to 600 Kgs/Hr (F&A 100°C)
Working Pressure	: 7 kg/cm ²
Fuel	: Coal/Wood/Bagasse/Lignite/ Agro-waste (Briquettes)
Thermal Efficiency	: 70 ± 2% on NCV 73 ± 2% on NCV with HRU
Furnace	: Internal Furnace
Heat Recovery unit:	: Economiser,
Feeding	: Manual



STEAM BOILERS

PACAKAGED TYPE – MAX- C SERIES

SOLID FUEL FIRED – Single Furnace (Three Pass Smoke Tube IBR Steam Boiler)

Type	: Three pass, fully wet back, IBR Steam Boiler
Capacity	: 0.6 TPH to 5 TPH (F&A 100°C)
Working Pressure	: 10.54/14.50/17.5/21.00 Kg/cm ² and above
Fuel	: Coal/Wood/Bagasse/Lignite/ Agro-waste (Briquettes)
Thermal Efficiency	: 75 ± 2% on NCV 82 ± 2% on NCV with HRU's
Heat Recovery unit:	Economiser, Air Preheater
Furnace	: Single Furnace (Internal Furnace)
Feeding	: Manual / Automatic



STEAM BOILERS

PACAKAGED TYPE – MAX- C SERIES

SOLID FUEL FIRED – Double Furnace (Three Pass Smoke Tube IBR Steam Boiler)

Type	: Three pass, fully wet back, IBR Steam Boiler
Capacity	: 3.0 TPH to 7.5 TPH (F&A 100°C)
Working Pressure	: 10.54/14.50/17.5/21.00 Kg/cm ² and above
Fuel	: Coal/Wood/Bagasse/Lignite/ Agro-waste (Briquettes)
Thermal Efficiency	: 75 ± 2% on NCV 82 ± 2% on NCV with HRU's
Heat Recovery unit:	Economiser, Air Preheater
Furnace	: Twin Furnace (Internal Furnace)
Feeding	: Manual / Automatic

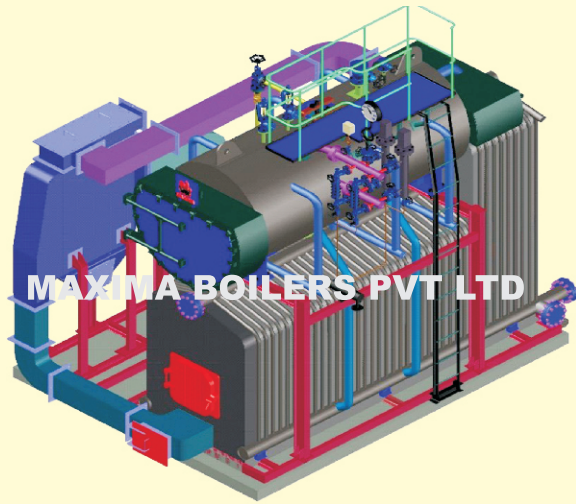
STEAM BOILERS -

PACKAGED TYPE – MAX-DH SERIES

SOLID FUEL FIRED – Drop Feeding (Three Pass Smoke Tube IBR Steam Boiler)

Type	: Three pass, fully wet back IBR Steam Boiler
Capacity	: 0.6 TPH to 8 TPH (F&A 100°C)
Working Pressure	: 10.54/14.50/17.5/21.00 Kg/cm ² and above
Fuel	: Coal/Bagasse/Rice Husk/Agro-waste (Briquettes)
Thermal Efficiency	: 75 ± 2% on NCV 78 ± 2% on NCV with HRU
Furnace	: Single Furnace (Internal Furnace)
Heat Recovery unit:	Economiser, Air Preheater
Feeding	: Drop Feeding





STEAM BOILERS -

PACKAGED TYPE – MAX - M SERIES

SOLID FUEL FIRED – With Water Wall Cum Smoke Tube

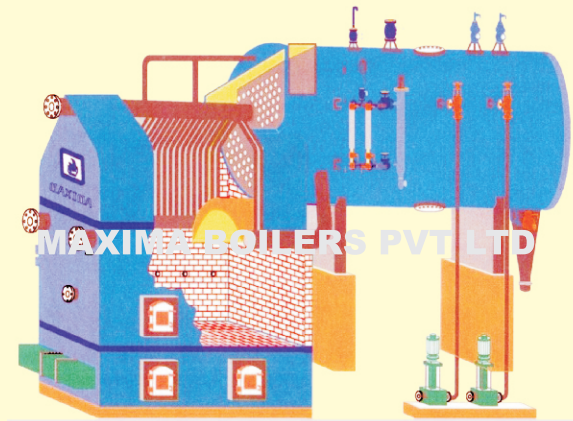
Type	: Three pass with Radiation Chamber Cum Shell Type IBR Steam Boiler
Capacity	: 1 TPH to 8 TPH F&A 100°C
Working Pressure	: 10.54/14.50/17.5/21.00 Kg/cm ² and above
Fuel	: Coal/Wood/Bagasse/Lignite/ Agro-waste (Briquettes)
Thermal Efficiency	: 82 ± 2% on NCV 84 ± 2% on NCV with HRU's
Furnace	: External Furnace with Water Wall
Heat Recovery unit:	Economiser, Air Preheater
Feeding	: Bubbling Bed with automatic Feeding, Traveling Grate, Chain Grate

STEAM BOILERS -

MAX-RC SERIES

SOLID FUEL FIRED – External Furnace (Water Wall Cum Smoke Tube Design)

Type	: Three pass with Radiation Chamber Cum Shell Type IBR Steam Boiler
Capacity	: 2 TPH to 8 TPH (F&A 100°C)- Manual 2 TPH to 20 TPH (F&A 100°C) Auto
Working Pressure	: 10.54/14.50/17.5/21.00 Kg/cm ² and above
Fuel	: Coal/Wood/Bagasse/Lignite/ Agro-waste (Briquettes)
Thermal Efficiency	: 75 ± 2% on NCV 80 ± 2% on NCV with HRU's
Furnace	: External Furnace with water Wall
Heat Recovery unit:	Economiser, Air Preheater
Feeding	: Manual/Auto

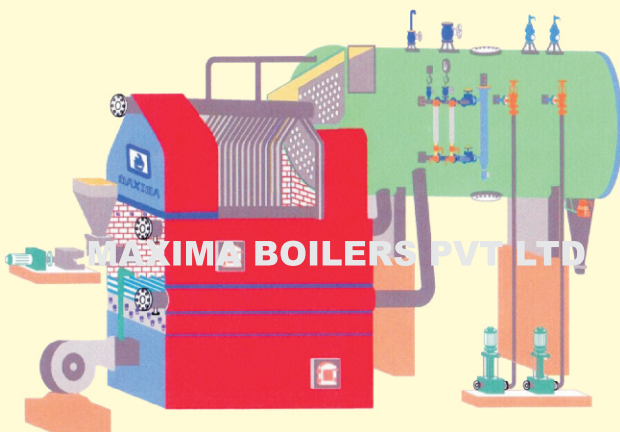


STEAM BOILERS

MAX-AFBC SERIES

SOLID FUEL FIRED – External Furnace With Fluidised Bed Combustion (Water Wall Cum Smoke Tube Design)

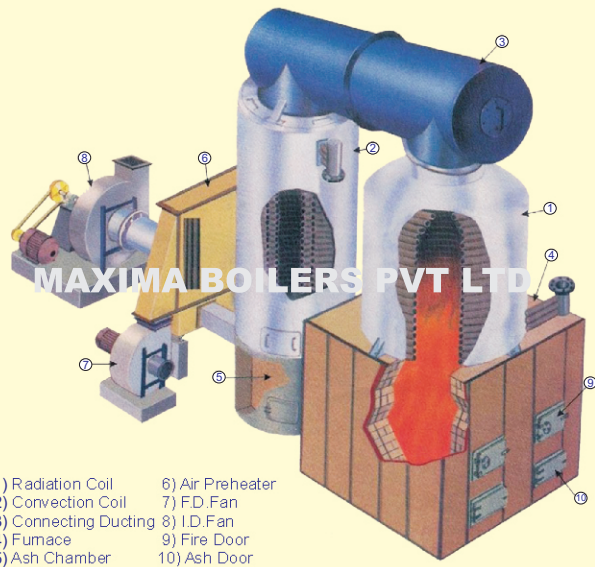
Type	: Three pass with Radiation Chamber Cum Shell Type IBR Steam Boiler
Capacity	: 2 TPH to 22 TPH (F&A 100°C)
Working Pressure	: 10.54/14.50/17.5/21.00 Kg/cm ² and above
Fuel	: Coal/Wood/Bagasse/Lignite/ Agro-waste (Briquettes)
Thermal Efficiency	: 80 ± 2% on NCV 82 ± 2% on NCV with HRU
Furnace	: External Furnace with water Wall
Heat Recovery unit:	Economiser, Air Preheater
Feeding	: Bubbling Bed with Auto Feeding, Fluidised Bed



THERMIC FLUID HEATERS -

COIL TYPE - RT SERIES OIL/GAS FUEL FIRED Fully Automatic

Type	: Three pass Vertical / Horizontal Coil Type Thermic Fluid Heater
Capacity	: 1 Lac Kcal/Hr to 50 Lac Kcal/Hr
Working Temp.	: 280°C, 340°C and 400°C
Fuel	: LDO/FO/GAS/Dual Fuel
Thermal Efficiency	: 88 ± 2% on NCV



THERMIC FLUID HEATERS -

RTC SERIES SOLID FUEL FIRED – External Furnace

Type	: Three / Four pass Vertical Coil Type Thermic Fluid Heater
Capacity	: 1 Lac Kcal/Hr to 50 Lac Kcal/Hr and above
Working Temp.	: 280°C and 340°C
Fuel	: Coal/Wood/Bagasse/Lignite/Agro-waste (Briquettes)
Thermal Efficiency	: 75 ± 2% on NCV 80 ± 2% on NCV with HRU's
Heat Recovery unit	: Air Preheater, Economiser
Feeding	: Manual/Auto, Semi fludised bed

HOT WATER GENERATORS -

COIL TYPE - HWG SERIES

Type	: 3 Pass, Vertical, Coil type
Capacity	: 0.5 L to 50 L Kcal/Hr
Working Temp.	: Upto 85°C - Non Pressurized and Upto 140°C - Pressurized Type
Fuel	: LDO/FO/GAS/Dual Fuel
Thermal Efficiency	: 88 +- 2% on NCV



MAXIMA BOILERS PVT LTD



STEAM BOILERS -

PACKAGED TYPE - MAX - EB SERIES

ELECTRODE BOILER

Type	: Vertical, Shell
Capacity	: 30 to 80 Kgs/hr (F&A 100° C) (Non IBR) 100 to 200 Kgs/hr (F&A 100° C) (SIB / IBR)
Working Pressure	: 7 Kg/cm ² (g), 10.54 Kg/cm ² (g)
Heating Media	: Electrode

STEAM GENERATORS -

PACKAGED TYPE - MAX - MSG SERIES

Type	: Horizontal, Shell and Tube
Capacity	: 300 to 5000 kg/h (F&A 100° C)
Working Pressure	: 7 kg/cm ² (g), 10.54 kg/cm ² (g)
Heating Media	: Thermic Fluid
NOTE	: Coil Assembly Carries Thermic Fluid inside the tube with multi pass configuration



MAXIMA BOILERS PVT LTD



MAXIMA BOILERS PVT LTD

STEAM BOILERS -

WASTE HEAT RECOVERY BOILER

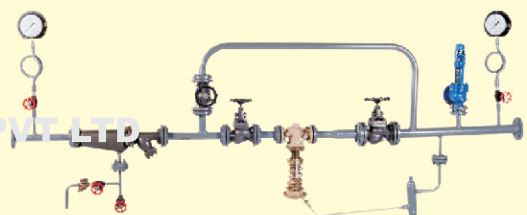
PACKAGED TYPE - MAX - WHR SERIES

Type	: Horizontal, Shell and Tube
Working Pressure	: 7 kg/cm ² (g), 10.54 kg/cm ² (g)
Heating Media	: Waste Flue Gas

GAS TRAIN (NG/LPG/PG/BIO GAS)

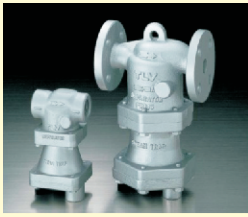


PRESSURE REDUCING STATIONS



MAXIMA BOILERS PVT LTD

STEAM ACCESSORIES
IN ASSOCIATION WITH TLV JAPAN



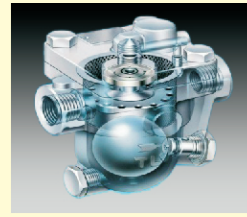
Moisture Separator



Pressure Reducing Valve



Condensate Recovery Pump



Free Float Steam Trap Assembly



TD Trap With Air Cap

Also supplies **Complete Efficiency Monitoring System** with Flow Meters cum Totalizers for Steam, Water, Gas (LPG/NG), Oil (FO/LSD/HSD), Gas Analyzer, Efficiency Monitoring Module (PLC/HMI) and Auto Blow Down System

Manufacturing Facility :

Unit - I

Plot No. R 718, T.T.C. Industrial Area, , M.I.D.C. Rabale,
 Navi Mumbai – 400 701. INDIA
 Tel : +91 22 27694913 / 27691425
 Fax : +91 22 27603295

Unit-II

F 80 & 81, Additional M.I.D.C.,
 Ambarnath (East), Thane – 421 501.
 INDIA
 Mobile : + 91 9619156006

Typical Customer Base :

Pharma



Rubber



Dairy



Chemical



Hospitality



Packaging



Rice Mill



Tannery



Laundry



Textile



Food



Beverages



Oli Distillation

MAXIMA BOILERS PVT. LTD.

Gr.14, Meghal Industrial Estate, Devi Dayal Road, Mulund (West), Mumbai – 400 080.

Tel: +91 22 25646815 / 25612759 Fax: +91 22 25670030

Sales Enquiry : Email : sales@maximaboiler.com; Mobile : + 91 9870772319 / 9821924074

India Representative : Mumbai, Pune, Bengaluru, Hyderabad, Chennai, Coimbatore, Erode, Delhi, Kolkata

International Representative : Kenya, Nigeria, Uganda, Ethiopia, UAE, Zambia, Sri Lanka, Philippines, Vietnam

We reserve the right to alter or change in specification in view of constant development toward the improvement in product quality. All the photographs shown are for reference only. All the above information is for representation purposes, refer our complete offer for actual.



www.maximaboiler.com