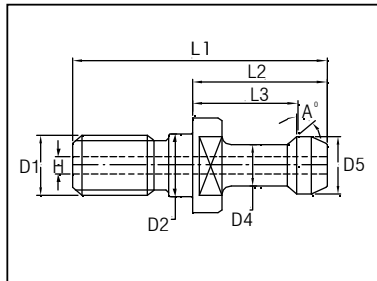
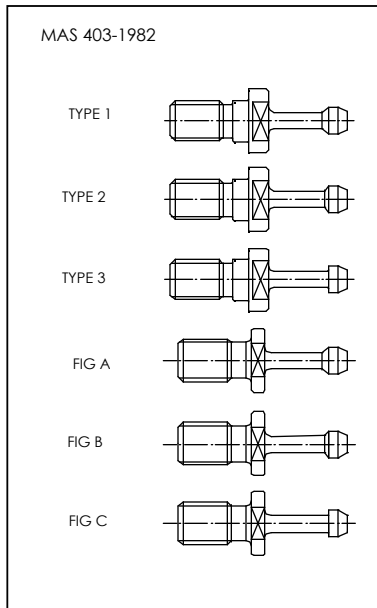


# NIKASH CNC ENGINEERS PVT LTD

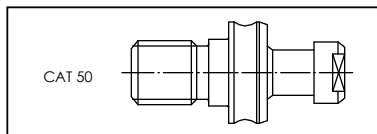
( ISO 9001: 2000 COMPANY)



## PULL STUDS (RETENTION KNOBS)



Ordering Code	TYPE	D1	D2	D4	D5	L1	L2	L3	A	H	Stock Status					
PM-1-30	TYPE 2	M12	12.5	7.0	11.0	43.0	23.0	18.0	30°	x	○					
PM-1-45	TYPE 1			8.0					45°	x	●					
PC12-1-45C	TYPE 1		13.0	6.0	10.0	36.0	20.0	16.0	45°	✓	○					
PC1-1-45	TYPE 1								45°	x	○					
PM-2-45	TYPE 1	M16	17.0	10.0	15.0	60.0	35.0	28.0	45°	x	●					
PM-2-45C	TYPE 1								45°	✓	●					
PM-2-30	TYPE 2								30°	x	○					
PM-2-30C	TYPE 2								30°	✓	○					
PM-2-00	TYPE 3								00°	x	●					
PM-2-00C	TYPE 3								00°	✓	○					
PC11-2-00	TYPE 3					57.0	32.0	25.0	45°	x	○					
PC11-2-45	TYPE 1								45°	x	○					
PC14-2-00	TYPE 3								50.0	25.0	18.0	00°	x	○		
PC15-2-45CG	TYPE 1								60.0	32.0	25.0	45°	✓	○		
PC17-2-00	TYPE 3								54.6	29.6	22.6	00°	x	○		
PC16-6-00	FIG B								5/8	-	9.9	15.0	48.6	26.7	19.7	00°
PMA-6-45	FIG A	5/8	-	10.0	15.0	53.89	32.05	25.05	45°	x	○					
PM-3-45	TYPE 1	M20	21.0	14.0	19.0	70.0	40.0	31.0	45°	x	○					
PM-3-30	TYPE 2								30°	x	○					
PM-4-45	TYPE 1	M24	25.0	17.0	23.0	85.0	45.0	35.0	45°	x	●					
PM-4-45C	TYPE 1									45°	✓	○				
PM-4-45CG	TYPE 1									45°	✓	○				
PM-4-30	TYPE 2									30°	x	○				
PM-4-30C	TYPE 2									30°	✓	○				
PM-4-30CG	TYPE 2									30°	✓	○				
PM-4-00	TYPE 3								00°	x	●					
PM-4-00C	TYPE 3								00°	✓	○					
PM-4-00CG	TYPE 3								00°	✓	○					
PC14-4-00	TYPE 3								18.0	24.0	71.0	31.0	23.0	00°	x	○



PC10-4-00	CAT 50	M24	25.0	17.0	23.0	85.0	45.0	35.0	00°	x	○

● -STANDARD STOCK

○ -NON STOCK STANDARD

**Note :** Please enquire with details for pull studs not listed above.

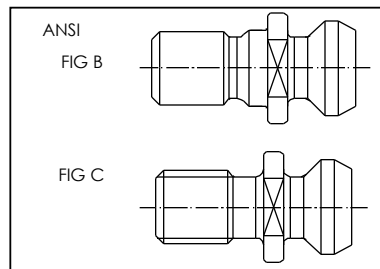
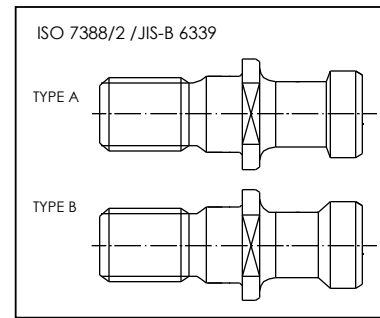
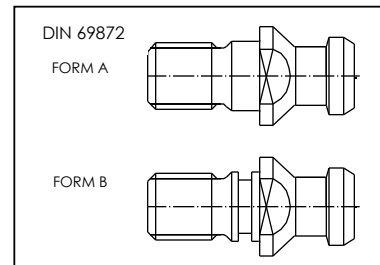
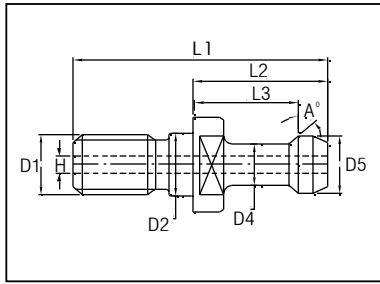
**Works :** NIKASH CNC Engineers Pvt Ltd, G-20/6, MIDC, Ahmednagar - 414111,  
Ph : 0241 -2778433/3292705 Email : nikashcnc\_anr@dataone.in & nikcnc\_anr@sancharnet.in

REV. NOV 2008

# NIKASH CNC ENGINEERS PVT LTD

( ISO 9001: 2000 COMPANY)

## PULL STUDS (RETENTION KNOBS)



Ordering Code	TYPE	D1	D2	D4	D5	L1	L2	L3	A	H	Stock Status
PD-1-15	FORM A	M12	13.0	9.0	13.0	44.0	24.0	19.0	15°	x	○
PD-1-15B	FORM A		12.5								●
PD-2-15B	FORM B	M16	17.0	14.0	19.0	54.0	26.0	20.0	15°	x	●
PD-2-15	FORM A										●
PD-2-15C	FORM A										○
PD-3-15	FORM A	M20	21.0	17.0	23.0	65.0	30.0	23.0	15°	x	○
PD-4-15	FORM A	M24	25.0	21.0	28.0	74.0	34.0	25.0	15°	x	●
PD-4-15C	FORM A										○
PD-4-15B	FORM A										○

PS-2-15	TYPE A	M16	17.0	14.0	19.0	54.0	26.0	20.0	15°	x	○
PS-2-15C	TYPE A						✓	○			
PJ-2-15	-			29.0	23.0	15°	x	○			
PJ-2-15CG	-							✓	○		
PS-2-45	TYPE B	M20	21.0	12.8	18.8	44.5	16.25	11.0	45°	x	○
PS-2-45C	TYPE B			✓	○						
PS-3-15	TYPE A			17.0	23.0	65.0	30.0	23.0	15°	x	○
PS-3-45	TYPE B	16.3	24.1	56.0	21.0	14.9	45°	x	○		
PS-4-15	TYPE A	M24	25.0	21.0	28.0	74.0	34.0	25.0	15°	x	○
PS-4-45	TYPE B			19.45	29.0	65.5	25.4	17.8	45°	x	○

PA-6-45C	FIG C	5/8	-	12.45	18.80	38.10	16.26	11.18	45°	✓	○
PAB-2-45	FIG B	M16	17.00			44.11	19.11	14.03	45°	x	○
PAB-2-45C	FIG B			✓	○						
PC18-2-45	FIG B			41.26	16.26	11.18	45°	x	○		
PC18-2-45C	FIG B			✓	○						
PAB-3-45	FIG B	M20	21.00	15.37	23.88	50.83	20.83	14.73	45°	x	○
PAB-3-45C	FIG B										✓
PAB-4-45	FIG B	M24	25.00	20.83	28.96	65.40	25.40	17.78	45°	x	○
PAB-4-45C	FIG B										✓
PA-7-45	FIG C	3/4	-	15.37	23.87	45.72	20.83	14.68	45°	x	○
PA-7-45C	FIG C										✓

● -STANDARD STOCK

○ -NON STOCK STANDARD

**Note :** Please enquire with details for pull studs not listed above.

**Works :** NIKASH CNC Engineers Pvt Ltd, G-20/6, MIDC, Ahmednagar - 414111,  
Ph : 0241 -2778433/3292705 Email : nikashcnc\_anr@dataone.in & nikcnc\_anr@sancharnet.in

REV. NOV 2008