



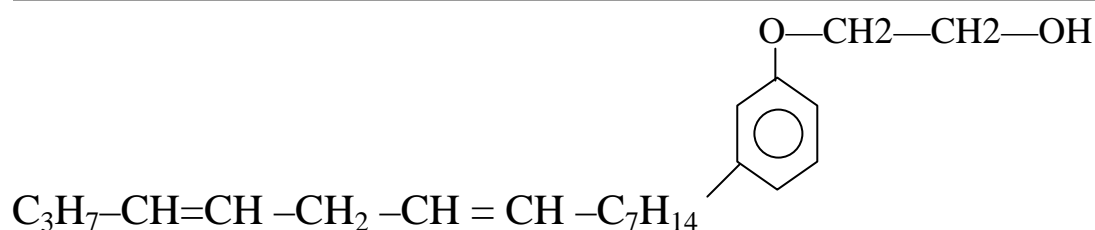
## Technical Data Sheet

P - 7020

### NON REACTIVE DILUENT

Paladin P - 7020 is unique hydroxy ether compound based on distilled product of cashew nut shell liquid (CNSL) having aromatic ring & C-15 long chain with conjugated double

#### Chemical Structure



#### Novel Features

- Reactive conjugated double bonds in C -15 side chain
- Polar & harder aromatic ring
- C - 15 long chain & aromatic ring imparts hydrophobic nature
- OH group is reactive site for esterification & urethane modifications
- OH & ether group introduce polarity & hence hydrophilic nature to the resin modifications
- It is non reactive to amines & compatible with bisphenols-A, bisphenol-F & phenolic epoxy novolac epoxy resins.
- Very low viscosity
- Non volatile

#### Applications

1. **In high solids epoxy resin systems as non reactive diluent in case of**
  - a) Marine
  - b) Industrial & concrete coatings to reduce **VOC** without affecting the over all performance of epoxy coating system
2. **It has excellent end use in modification of**
  - i) Epoxy resins
  - ii) Alkyd resins
  - iii) Urethane resins
  - iv) Acrylic resins



## Technical Data Sheet

### Typical Properties

Sr. No.	Property	Unit	Specification
i)	Appearance	Visual	Clear Yellow Liquid
ii)	Colour	Gardner	12 Max
iii)	NVM (1 HR @105° C )	%	Solvent Free
iv)	Viscosity @25° C	cPs	50 - 100
v)	Hydroxyl Value	mg KOH / g	170 - 200
vi)	Iodine Number	-	185 - 195
vii)	Flash Point ( Closed Cup )	° F	> 240
viii)	Density @25° C	g / cm <sup>3</sup>	0.96 - 0.98
ix)	PHR ( Liquid Resin EEWT-190 )	--	2 - 20

### Storage & Stability

Paladin **P - 7020** has storage stability of 1 year. Containers with this chemical should be kept tightly closed to avoid contamination. It is to be stored in cool & dry place.

### Handling Precautions

May be harmful if ingested or absorbed through the skin & can cause sensitization. Will cause severe inflammation in contact with eye & skin. Wash thoroughly after handling. Adequate ventilation is essential during application. Containers should be tightly closed when not in use or during transportation. Do not inhale mist or vapours. It is recommended to use gloves, safety glasses & protective clothing for safe handling.

### First AID

In case of

- Inhalation** : Remove to fresh air & give oxygen if breathing is difficult.
- Ingestion** : Give plenty of water. Do not induce vomiting. Contact a physician.
- Contact with eyes** : Flush eyes with plenty of clean water for at least 15 minutes.
- Contact with skin** : Immediately wash with mild soap & water.

### Disclaimer

All information contained is based on practical experience. Our technical advice – whether verbal, written by way of trials are given in good faith. Neither warranty nor guarantee is offered or implied & accepted at the seller's risk, since the actual conditions prevailing at the time of using this product are outside the control of the company. Hence it is entirely buyer's & user's responsibility. While the information contained here in is believed to be reliable. **Paladin Paints & Chemicals Pvt. Ltd.** makes no representations as to the results the user or buyer will attain. Product performance & full scale testing are the responsibilities of the buyer & user.

Paladin Paints & Chemicals Pvt. Ltd.

Unit No-204, Monarch Chambers, Marol Maroshi Road, Marol Naka, Andheri (E), Mumbai 400 059, Maharashtra, India.

Phone : (022) 29202587 / 29206258 . Fax : (022) 29254386 . Email : vanaprabha@vsnl.com