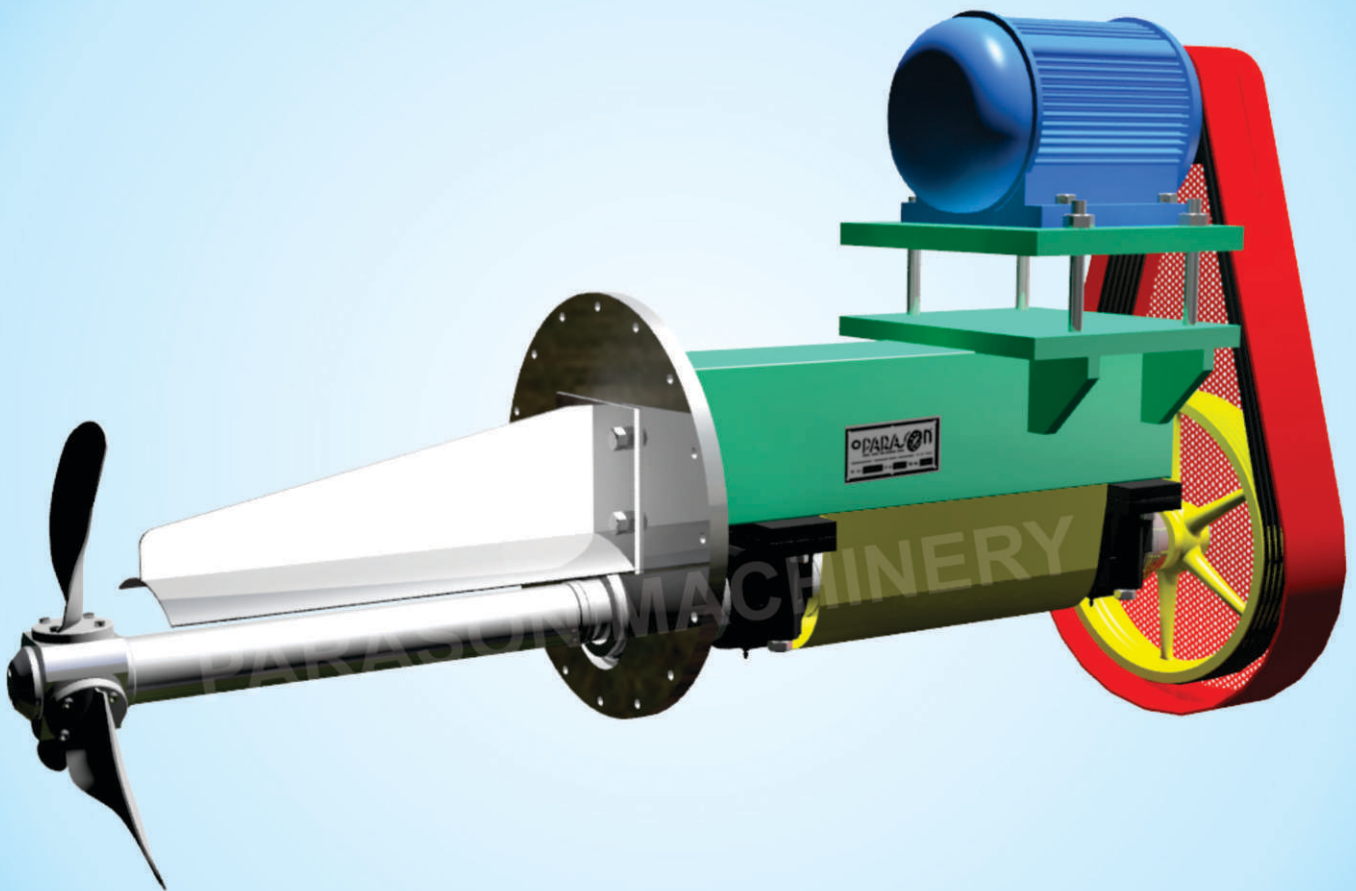


Special Features

- Adjustable Blade Angle.
- Various Metallurgy to suit each applications.
- Maintenance Free.
- Low Power Consumption.
- Inbuilt Dilution Arrangement.



Agitator Blades

Parason has specialized knowledge of Agitator blade design, metallurgy and manufacturing to suit industry demands.



PARASON AGITATOR

For efficient mixing

- ◆ Effective agitation at low power consumption.
- ◆ All wet parts of stainless steel.
- ◆ Propeller is equipped with replaceable blades.
- ◆ Blade angles are adjustable.
- ◆ Guiding plate to increase efficiency (avoids rotation of pulp and reduces power consumption).
- ◆ Bearings are accessible from out-side and can be replaced without draining the chest .



For all types of fibers

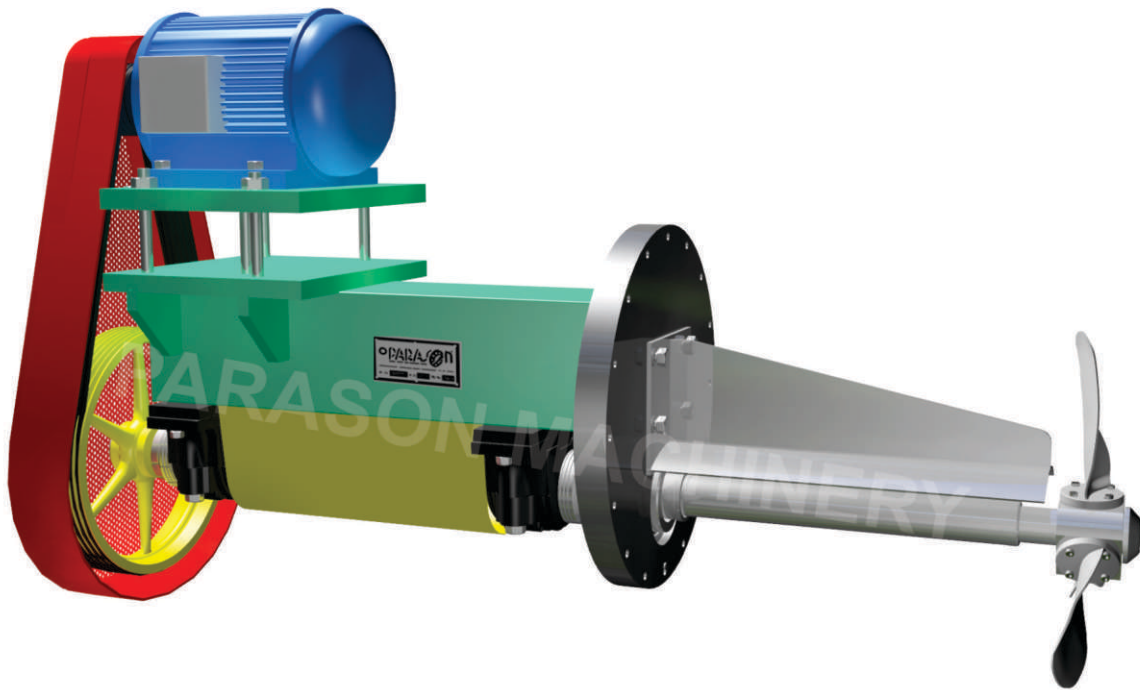
The PARASON agitators are designed for all kind of fibers in chests, tanks and storage towers up to a consistency of 5% in the propeller area.

Agitator Designed in Sizes

SIZE	MOTOR RATING (kw)	AGITATOR rpm
PAT - 600	9 - 11	320 - 400
PAT - 800	11 - 15	220 - 310
PAT - 1000	15 - 30	180 - 260
PAT - 1300	45 - 55	165 - 200
PAT - 1600	55 - 75	120 - 180

Material Of Construction

	Grade-I	Grade-II	Grade-III
Blades	SS 304	SS 316	Duplex Steel
Hub	SS 304	SS 316	Duplex Steel
Guiding Plate	SS 304	SS 316	SS 316
Shaft	EN-9		
Shaft Sleeve	CA-40		
Bracket	MS + SS Cladding		
Wall Ring	Cast Iron		



Agitator plays critical role in stock preparation process for mixing, maintaining homogeneity and uniform quality of pulp.

Various factors affecting agitation are

- Type of stock
- Operating Consistency
- Chest/Tower size and its geometry
- Stock Temperature
- Retention time
- Type of agitation(mixing or storage)

Hence the agitator needs to be maintenance free with adjustable blades angle for imparting optimum energy to the stock for efficient operation.

Gland Packing Arrangement

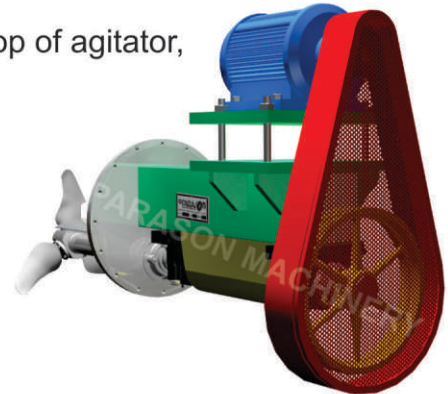
- Option 1 : Standard Gland packing with sealing water
- Option 2 : Standard Gland packing without sealing water
- Option 3 : Mechanical Seal with sealing water



PARASON AGITATOR

Drive Arrangement

- Upto PAT-1000 size - 'V' Pulley with motor mounting on top of agitator, no separate foundation required
- PAT-1300 size - 'V' Pulley with motor mounting on separate foundation.
- PAT-1600 size - Gear box

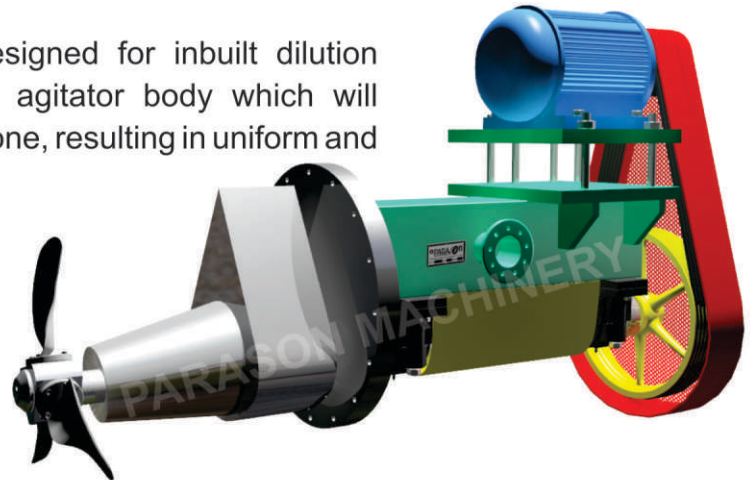


Accessories

- Drive and Driven pulley
- Belt guard
- Motor mounting plate(upto PAT-1000), for bigger size separate RCC foundation for motor.
- Belt(Optional)

Inbuilt Dilution Arrangement

Parason 'D' type Agitators are specially designed for inbuilt dilution arrangement. Dilution water directly fed into agitator body which will discharge in the centre of the agitator propeller zone, resulting in uniform and efficient dilution of stock before pumping.



Application

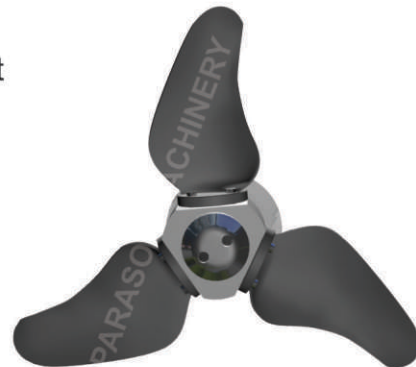
- High Density Towers
- Bleach Tower
- Blow Tank

Spare Blades For Existing Agitators

Parason also do the engineering of the Agitators and suggest suitable blades for your existing agitators.

Making you easy for –

- Effective Power saving
- Fast change-over time
- At lowest cost



YOUR VALUED ENQUIRIES ARE SOLICITED.

PARASON MACHINERY (I) PVT. LTD.

PARASONS HOUSE, 28, VENKATESH NAGAR, OPP. JALNA ROAD, AURANGABAD-431 001. (INDIA)

TEL. : +91 (0) 240 - 2339234/35/36/37, FAX:+91 (0) 240 - 2332944

CUSTOMER SERVICE NO. : +91 (0) 240 - 6644444, 6644200

Web : www.parasonmachinery.com E-mail : info@parasonglobal.com

Web : www.parasonglobal.com E-mail : parason@parasonglobal.com

Parason... Leader in stock preparation

