



RichCAM Auto Engineering (I) Pvt. Ltd.

Gat No. 255, Opp ' Modern' College,
Moshi- Dehu Road, Moshi Pune - 412 105.

DP-590 Material Parts Presentation



Customer:- Honda Car

Part Name:- STIFF L FR SIDE FRAME **Matl. & Thk.:-** DP-590 & 1.60 mm

Part Image



Operation Sequence:-

OP-10 :- Blank & Pierce (Progressive)

OP-20 :- Form Die

OP-30 :- Wipe Die

OP-40 :- Cam Restrike Die

Customer:- Honda Car

Part Name:- STIFF R FR SIDE FRAME **Matl. & Thk.:-** DP-590 & 1.60 mm

Part Image



Operation Sequence:-

OP-10 :- Blank & Pierce (Progressive)

OP-20 :- Form Die

OP-30 :- Wipe & Restrike Die

OP-40 :- Cam Restrike

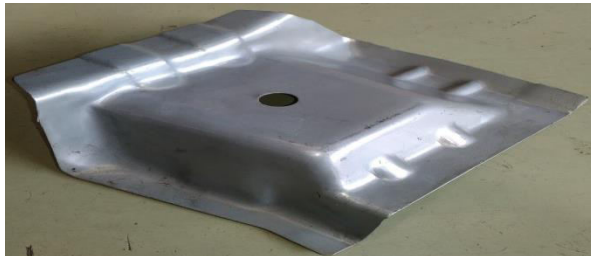
OP-50 :- Pierce & Cam Pierce Die

Customer:- Mahindra & Mahindra

Part Name:-

Matl. & Thk.:-DP-590 & 1.60 mm

Part Image



Operation Sequence:-

OP-10 :- Draw Die

OP-20 :- Trim Die

OP-30 :- Cam Notch Die

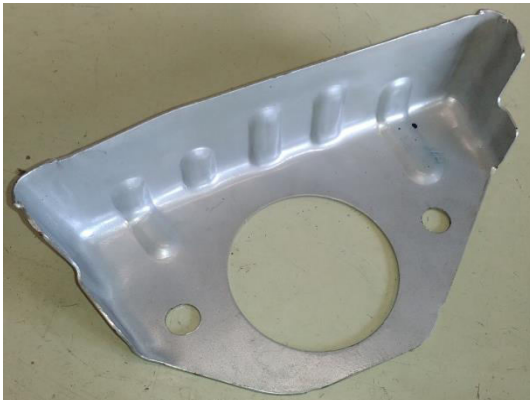
OP-40 :- Restrike Die

OP-50 :- Part Off Die

Customer:- Mahindra & Mahindra

Part Name:- Reinf. RR Susp. LH & RH **Matl. & Thk.:-** DP-590 & 1.80 mm

Part Image



Operation Sequence:-

OP-10 :- Draw Die

OP-20 :- Trim Die

OP-30 :- Wipe & Restrike Die

OP-40 :- Cam Notch Die

OP-50 :- Pierce & Part Off Die

Customer:- Mahindra & Mahindra

Part Name:- Susp. Twr. RR LH-RH

Matl. & Thk.:- DP-590 & 2.80 mm

Part Image



Operation Sequence:-

OP-10 :- Blank & Pierce

OP-20 :- Form- 1 Die

OP-30 :- Form-2 Die

OP-40 :- Form-3 Die

OP-50 :- Form-4 Die

Thank You.....



Address :- Gat No. 255, Opp ' Modern' College,
Behind ' ROSS' Company, Moshi- Dehu Road,
Moshi Pune - 412 105.

Web Site :-www.richcamtooling.com