



RichCAM Auto Engineering (I) Pvt. Ltd.

Gat No. 255, Opp ' Modern' College,
Moshi- Dehu Road, Moshi Pune - 412 105.

HONDA Parts Presentation



Part Name:- Reinf. RR Susp. LH & RH

Matl. & Thk.:-JSC270D & 1.00 mm

Part Image



Transfer Line Press Tools

Operation Sequence:-

OP-10 :- Blank & Pierce

OP-20 :- Form Die

OP-30 :- Flange & Restrike Die

OP-40 :- Piercing & CAM Pierce Die

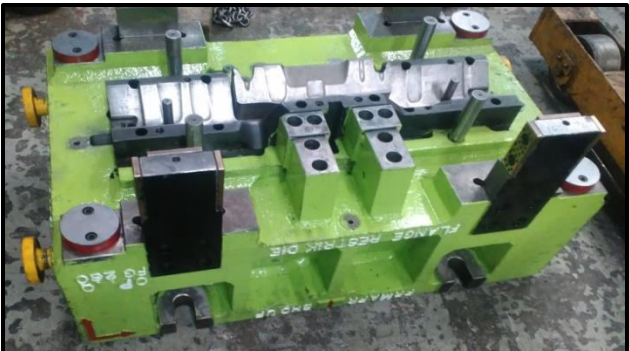
Transfer Line Press Tools



OP-10 :- Blank & Pierce

TOOL SIZE:-

1000 X 650 X 850



OP-20 :- Form Die

TOOL SIZE:-

1020 X 700 X 850

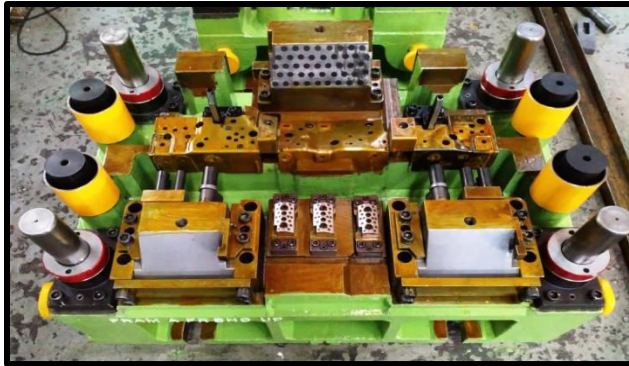


**OP-30 :- Flange &
Restrike Die**

TOOL SIZE:-

1000 X 600 X 850

Transfer Line Press Tools



OP- 40 :- Pierec & CAM
Pierec Die

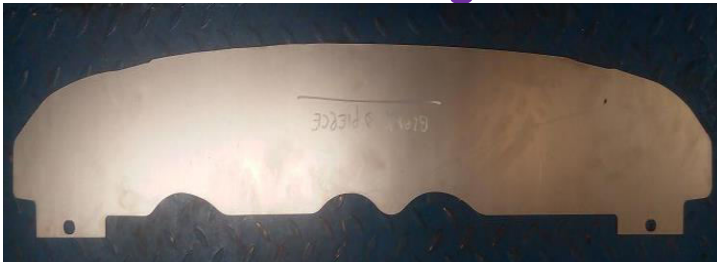
TOOL SIZE:-
1040 X 650 X 850



RichCAM
Auto Engineering (I) Pvt. Ltd.
An ISO 9001-2008 Certified Company

Part Name:- PLATE FR RHD LWR MBR **Matl. & Thk.:-** JSC 270 C & 0.60 mm

Part Image



Transfer Line Press Tools

Operation Sequence:-

OP-10 :- Blank & Pierce

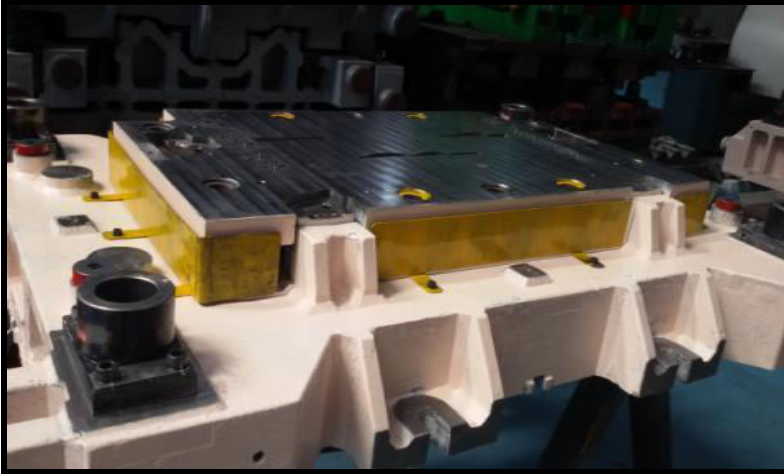
OP-20 :- Form Die

OP-30 :- Restrike & Flange Die

OP-40 :- Piercing Die

Transfer Line Press Tools

OP-10 :- Blank & Pierce



TOOL SIZE:- 1650 X 1275 X 850



OP-20 :- Form Die

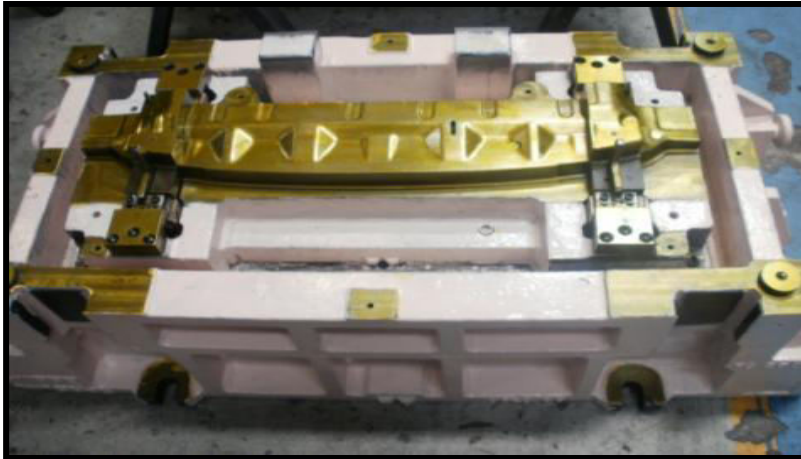


TOOL SIZE:- 1300 X 780 X 850

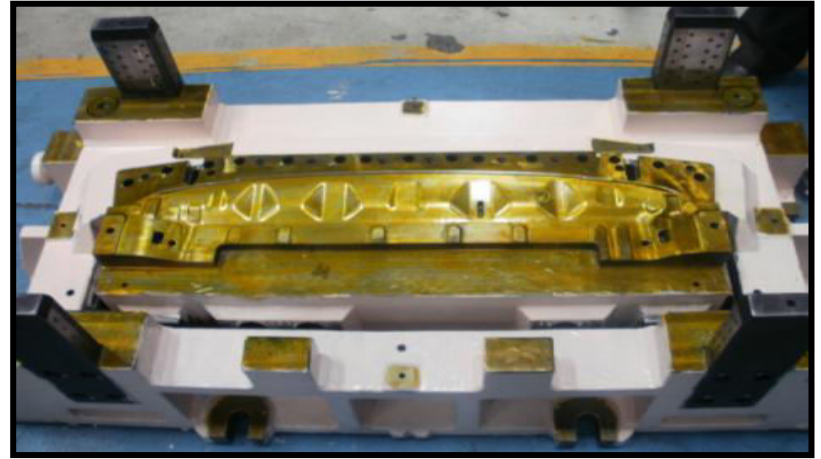


Transfer Line Press Tools

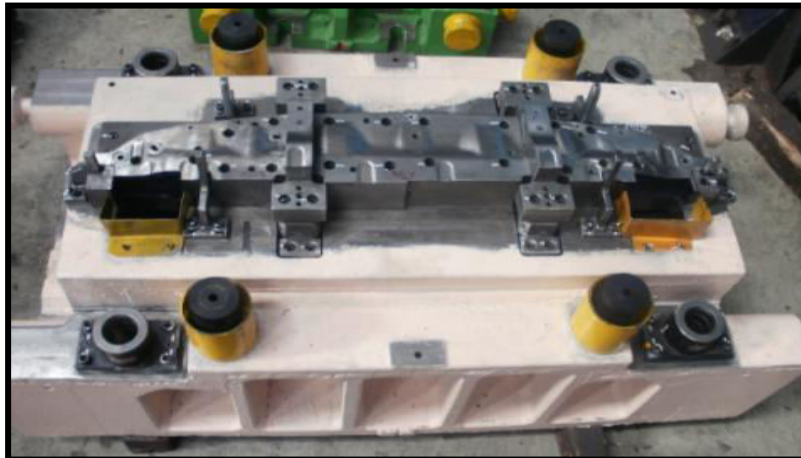
OP-30 :- Restrike & Bend Die



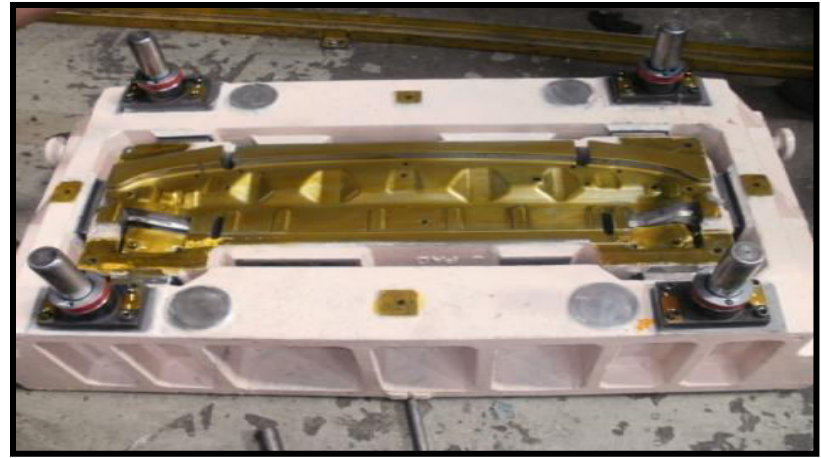
TOOL SIZE:- 560 X 700 X 850



OP-40 :- Piercing Die



TOOL SIZE:- 1400 X 1275 X 850



Part Name:- STIFF R FR SIDE FRAME **Matl. & Thk.:-**DP-590 R & 1.60 mm

Part Image



Tandem Line Press Tools

Operation Sequence:-

OP-10 :- Blank & Pierce (Progressive)

OP-20 :- Form Die

OP-30 :- Wipe Die

OP-40 :- Cam Restrike

OP-50 :- Pierce & Cam Pierce Die

Tandem Line Press Tools



OP-10 :- Blank & Pierce
(Progressive)

TOOL SIZE:-
1120 X 1120 X 600



OP-20 :- Form Die

TOOL SIZE:-
1050 X 650 X 755



OP-30 :- Restrike Die

TOOL SIZE:-
1050 X 650 X 755

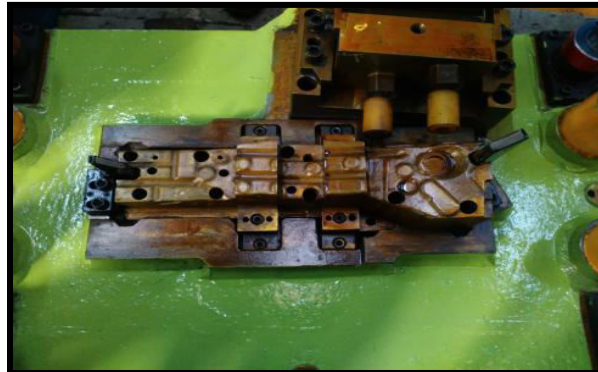
Tandem Line Press Tools



OP-40 :- Cam Restrike

TOOL SIZE:-

1000 X 700 X 755



**OP-50 :- Pierce &
Cam Pierce Die**

TOOL SIZE:-

1000 X 750 X 755



Part Name:- STIFF L FR SIDE FRAME

Matl. & Thk.:-DP-590 R & 1.60 mm

Part Image



Tandem Line Press Tools

Operation Sequence:-

OP-10 :- Blank & Pierce (Progressive)

OP-20 :- Form Die

OP-30 :- Cam Restrike Die

OP-40 :- Pierce Die

Part Name:- MBR_R,FR_BHD_SIDE LH **Matl. & Thk.:-** JSC270D & 0.60 mm

Part Image



Tandem Line Press Tools

Operation Sequence:-

- OP-10 :- Blank & Pierce Progressive
- OP-20 :- Form 1 LH & RH Die
- OP-30 :- Flange & Restrike LH & RH Die
- OP-40 :- Cam Pierce & Restrike LH & RH
- OP-50 :- Cam Pierce & Part Off Die

Thank You.....



Address :- Gat No. 255, Opp ' Modern' College,
Behind ' ROSS' Company, Moshi- Dehu Road,
Moshi Pune - 412 105.

Web Site :-www.richcamtooling.com