



A CORPORATE PRESENTATION

Long time ago, when we
started in 1960, we asked ourselves
what kind of a company do we want to be?





After much looking, we found our

ANSWER





"It has always been an unbearable thought to me, that someone could prove, on testing one of my products, that I produce anything of inferior quality. I have, therefor, always tried to let only such work go out, that would stand any objective test, work that was of the very best quality."

-Robert Bosch



BY ROCKET ENGINEERING PVT. LTD.

INDIA'S LEADING MANUFACTURER OF SMALL SIZE DIESEL ENGINES AND PUMP SETS

OUR VISION

Our vision is to establish Comet as historically highest ranking diesel engine brand.



OUR MISSION

Our mission is to convert our passion for R&D into developing high quality, innovative products that creates value for our customers.



OUR VALUES



Continuous Innovation



Zero compromise with quality



Provide value for money

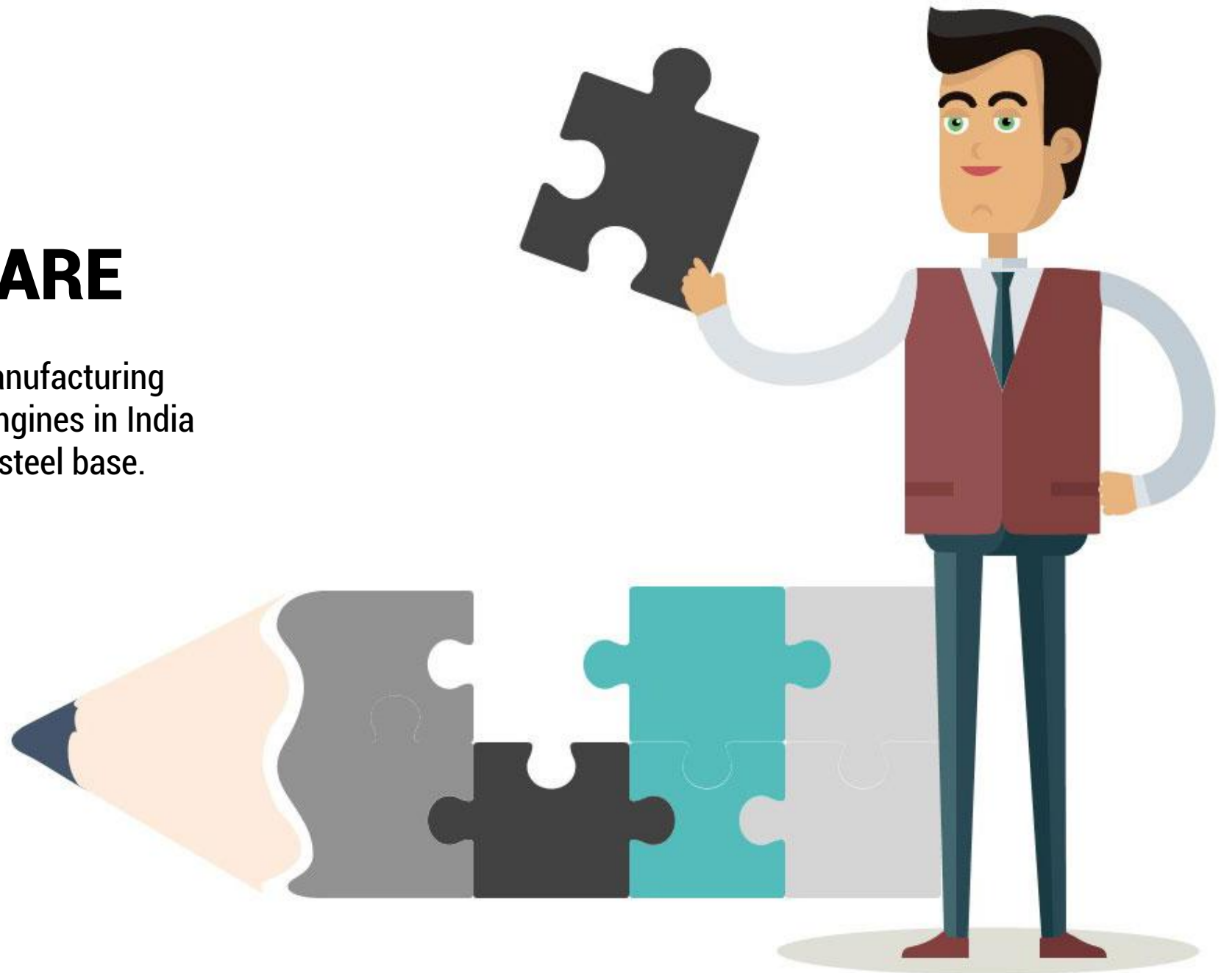


Support eco- friendly products



WHO WE ARE

We are the leaders in manufacturing portable variety of diesel engines in India with a robust structure steel base.



OUR LOCATION

We are located at Kolhapur, a small Indian town, nestled in the western Ghats of the Indian state of Maharashtra.



OUR ACHIEVEMENTS

Government of Maharashtra has awarded RE on four occasions for its meritorious performance in diesel engine category.





WHAT WE DO

1

Our R&D successfully undertakes end to end gamut of product development right from collecting the input of end customers' preferences to translating them into doable designs.

2

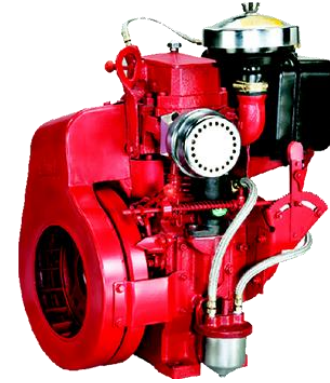
We employ our engines in various indigenously designed commercial products with an aim to simplify peoples lives.

3

Improvising and Innovating being our core value, we even customise our engines as per the needs of our customers.

OUR PRODUCTS

We manufacture machines and innovate designs that become a glorious part of our legacy.



Cub Series



Colt Series



Portable Series



Conventional Series

OUR PRODUCTS

Currently we manufacture diesel engines ranging between 2.5 HP and 28 HP.



Commercial Products



Chaff Cutter Machine



Water Pumps

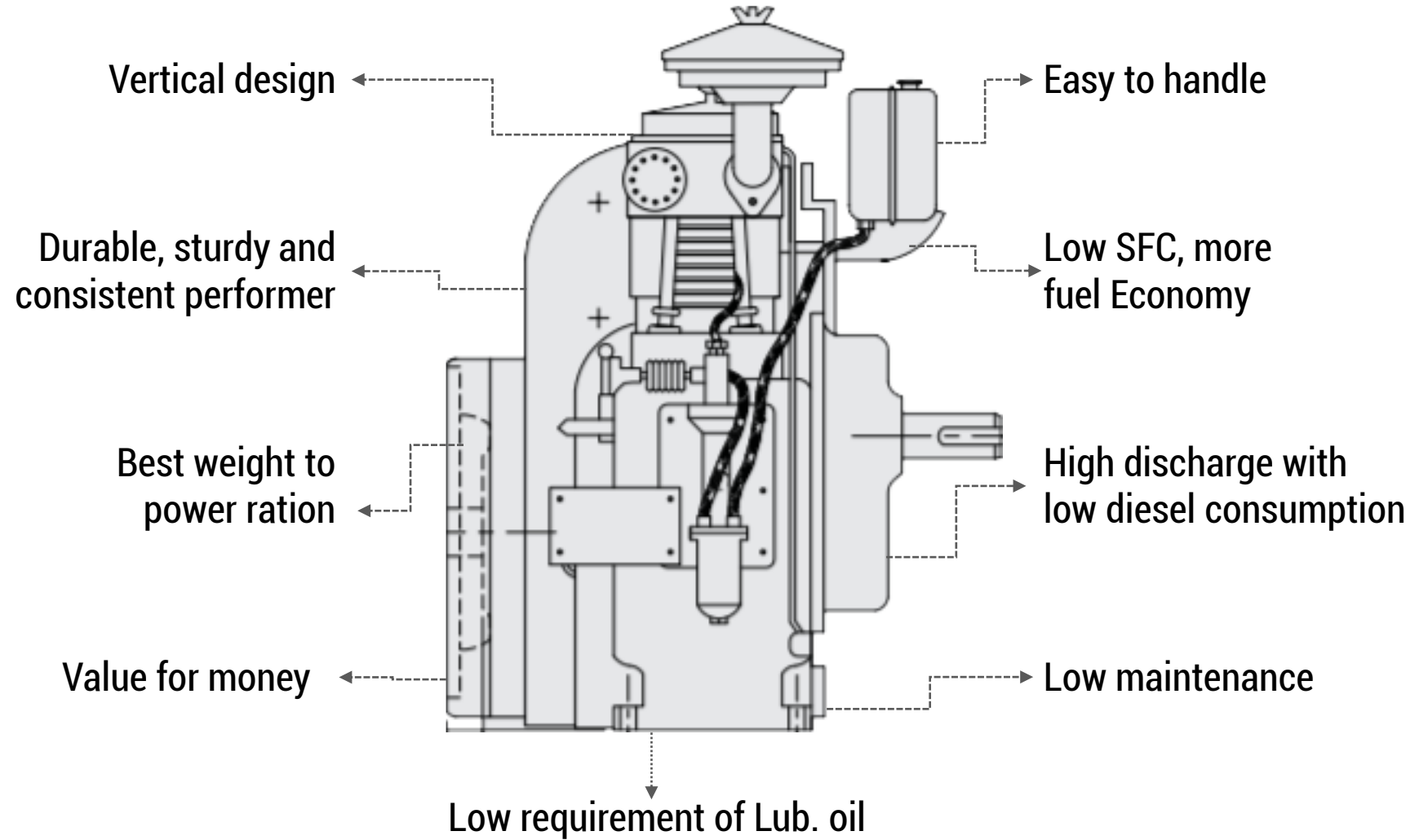


Maruti



Submersible Pumps

STAR FEATURES OF OUR PRODUCTS



IN THE PIPELINE

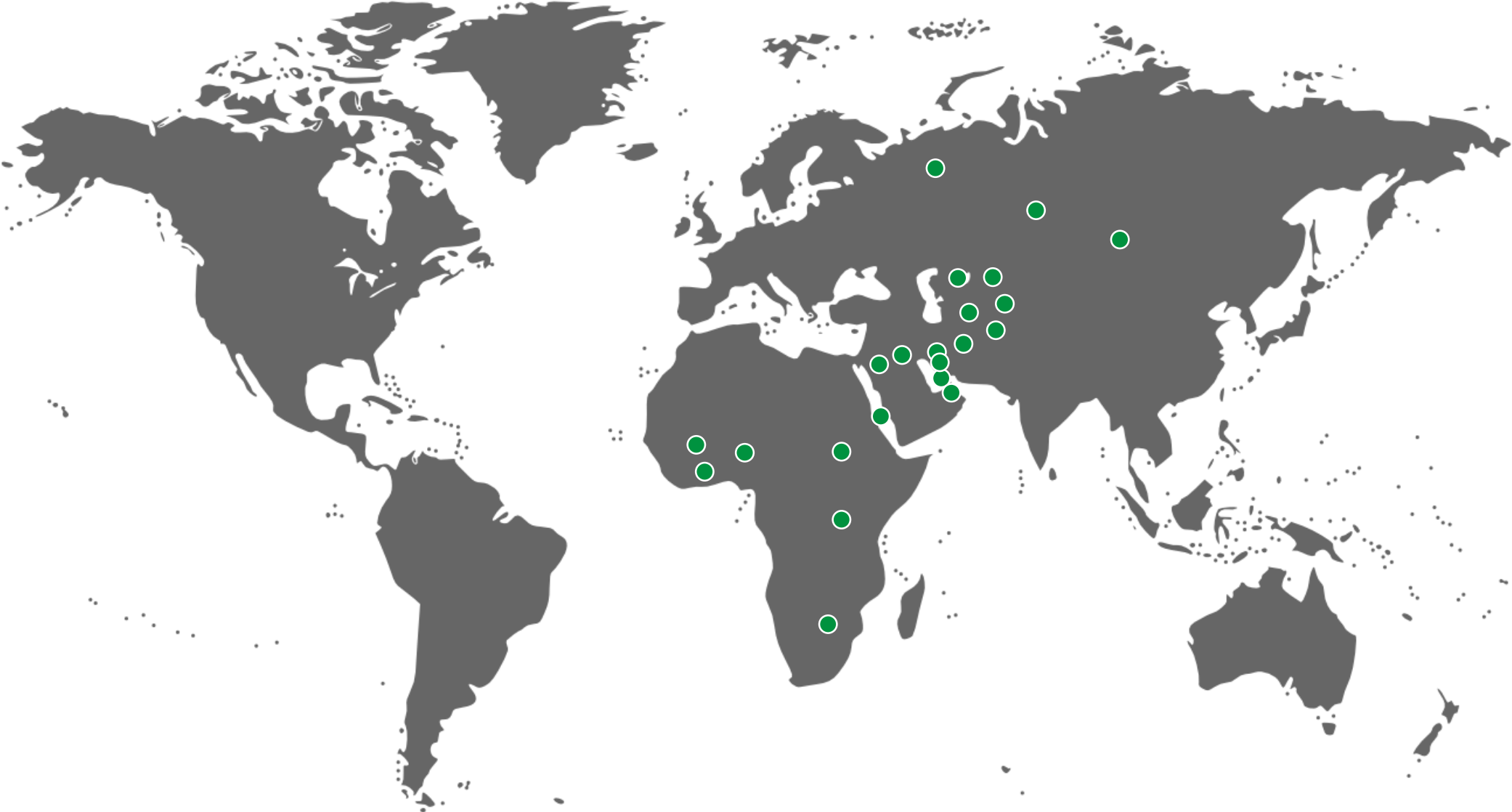
1 East handle start system.

2 Cooling system to bring down the temperature of the engine.

3 Anti vibration system for smooth and long life of the engine.



OUR REACH



WHAT SETS US APART

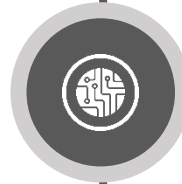
We have our own in house Research & Development team. R&D is our religion. Our way of life.



Throughout our journey we have never resorted to tempting reverse engineering.

We have embraced Japan's famous 'Kaizen System' to enhance overall quality and quantity.





Our uniqueness lies in re-engineering under the department of Research and Development.



Our designs lead the market which is flooded with 'Comet Type' products.



We maintain special purpose in house machining line to produce critical components like crankcase, crankshaft, cylinder head, camshaft and connecting rods.

We are ISO certified and all our products are
complaint to BIS.
(Bureau of Indian standards)



Our simply superb After Sales Service enables us
to serve our entire range of OE quality spares at
rapid pace.

We make incessant efforts to
provide value for money.



OUR STAR STUDDED CLIENTELE



WE ARE PROUD OF

OF

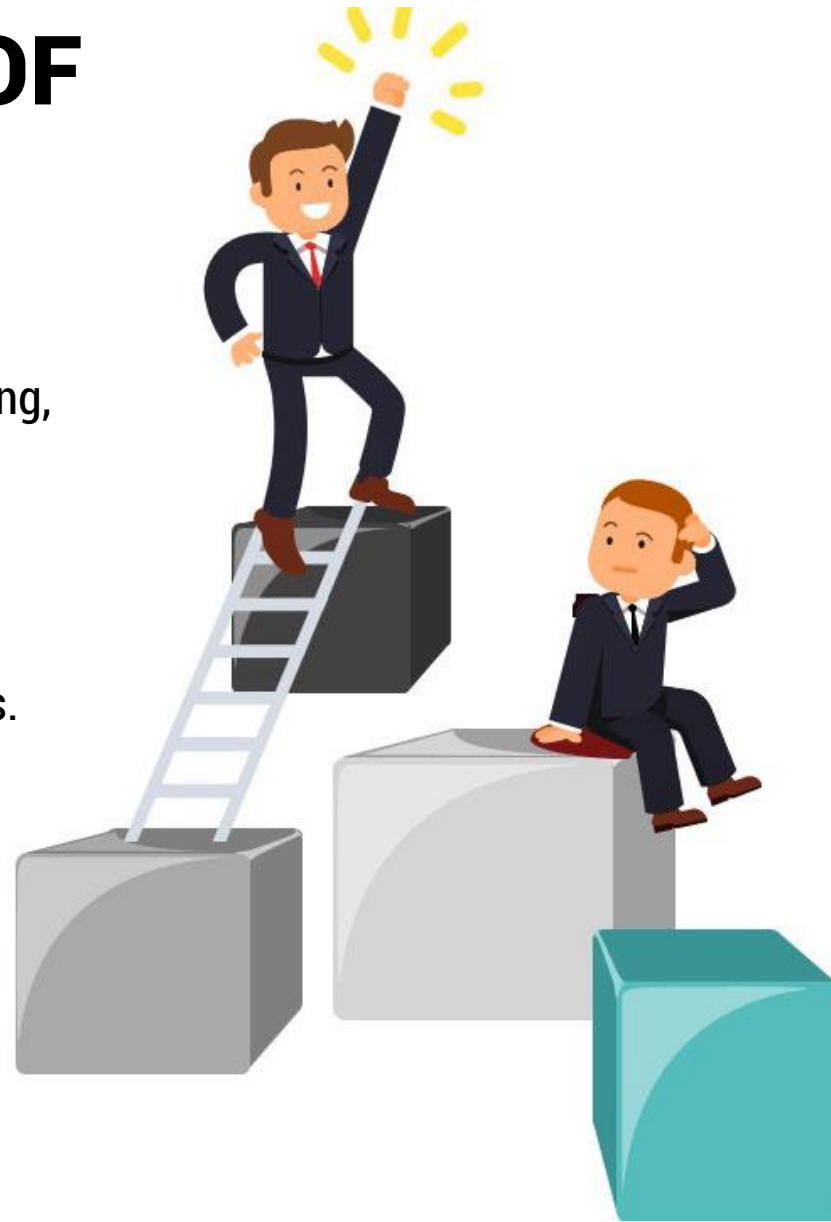
our history which is all about innovating, improvising, building, testing and servicing.

OF

our indigenous designs that serve as benchmark standards.

OF

the people who started and continue to build 'Brand Comet' brick by brick.



OF

our customers who have believed in us and shown utmost loyalty towards us.

OF

our suppliers who have stood by us through thick and thin.

OF

our dealers who have been reliable partners & promotive brand ambassadors throughout our journey.

WE ARE PROUD OF

OF

our history which is all about innovating, improvising, building, testing and servicing.

OF

our indigenous designs that serve as benchmark standards.

OF

the people who started and continue to build 'Brand Comet' brick by brick.

OF

our customers who have believed in us and shown utmost loyalty towards us.

OF

our dealers who have been reliable partners & promotive brand ambassadors throughout our journey.

It is because of all of the above that we have and will continue to be Extra ordinary.



CONTACT US

Rocket engineering pvt. Ltd., Plot no. D - 19, m.I.D.C., Shirol, kolhapur - 416 122. Maharashtra. India

Phone: + 91 230 2468403, 2468407, 2468413

Fax: +91 230 2468731

Email: info@rocket-comet.Com

Website: www.Rocket-comet.Com:

Social:   