

**TRIA**  
G R O U P



**DESIGNED TO FIDELITY**

# SAE FLANGES

Version September-2013



# PRODUCT OVERVIEW

We are a leading manufacturer and supplier of precision engineering components for construction, mining, hydraulics, agriculture and general engineering in South Asia, and worldwide.



## PRODUCTS

- **Hydraulics for Heavy Machinery**
  - Flanges
  - Hydraulic Ferrules/Sleeves
  - Hydraulic Fittings
  - Hydraulic Clamps
- **Machined Components**
- **Valve body**



TRIA Group, the fastest growing trusted leader in forged and / or machined hydraulic components, can provide you a wide range of precision SAE split, mono and other precision flanges for demanding hydraulic applications.



## Product Profile

**We offer the following types of flanges for your unique requirements:**

- Code 61 (3000psi) and Code 62 (6000psi) Split and Mono Flanges
- Flange Blocks to NPT thread and BSP thread
- Flange Blocks to Weld Socket
- Flange Blocks with Flat Opposing Seal Face
- Oval Flanges
- Custom Flanges

## Raw Material & Plating

**Raw Material (all certifications available upon request)**

- SS 304, SS 316
- Standard Material ST52.3; other grades available, such as SAE 1040, C20, C60, C45

**Plating:**

- Chrome (VI) free (Trivalent), Hexavalent chrome plating, Zinc
- Nickel

## Advantages for Our Customers

**Quality: Indian Production, Global Standards**

- TRIA Group is an Indian venture with six production facilities in Pune, India
- All flanges are manufactured to exceed global standards
- Our flanges are tested and approved by over 75 global OEMs

**Cost Competitiveness**

- With world-class quality, you still get very competitive rates
- Provide us the opportunity to quote for you

**Ready to Meet Your Needs**

- We can provide small volumes of fewer than 100 flanges to larger volumes up to 400,000 flanges a month

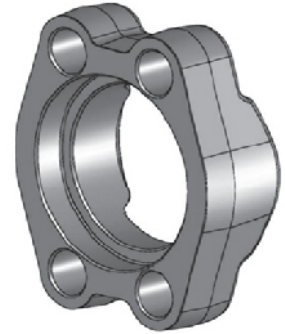
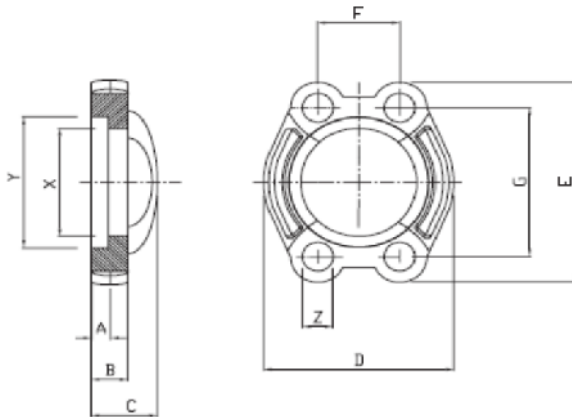
Contact Us to Learn More:

**Pune Office**  
+91 8888103355  
mkt@tria-group.com



SAE 6162 Mono Flange	5
SAE 6162 Split Flange	6
SAE 6161 Mono Flange with Tapped Holes	7
SAE 6162 Flat Mono	8
SAE 6162 Flat Flange Split	9
Integrated Socket-weld with O Ring	10
Integrated Socket-weld with Flat Face	11
Integrated Socket-weld with O Ring	12
Integrated FBSP with Flat Face	13
Integrated FNPT with O Ring	14
Integrated FNPT with Flat Face	15
Integrated BTW with O Ring	16
Integrated BTW with Flat Face	17
Blind Mono Flange	18
Butt Weld Adapter with O Ring	19
Butt Weld Adapter with Flat Face	20

\* Due to continual improvement, catalog will be modified & updated from time to time without information. This is version- Sept 2013.

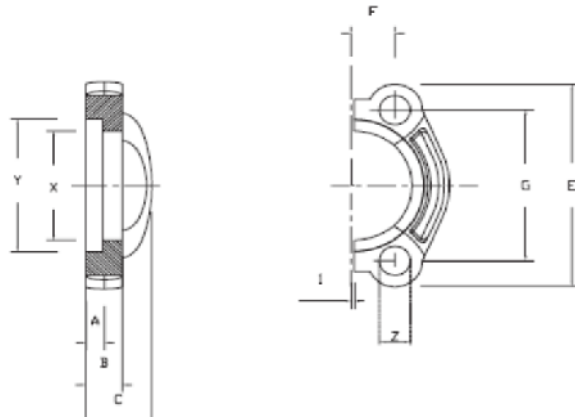


Max Working Pressure ( bar )			Nominal Size		Dimensions (mm)											Bolts	
Part No.	Bolts 8.8 (ML)	Bolts 10.9 (MH)	ISO [DN]	SAE (inch)	SAE MONO Flange	X	Y	A	B	C	D	E	F	G	Z	metric	UNC
<b>Standard Pressure Series (according to ISO6162-1) 3000 PSI Series</b>																	
41	350	350	13	1/2"	FM-3-1/2"-C	24,3	31	6,2	13	19	46	54	17,5	38,1	8,7	M8x25	5/16"-18x1"1/4
42	350	350	19	3/4"	FM-3-3/4"-C	32,2	38,9	6,2	14	22	52	65	22,3	47,6	10,5	M10x30	3/8"-16x1"1/4
43	250	315	25	1"	FM-3-1"-C	38,5	45,3	7,5	16	24	59	70	26,2	52,4	10,5	M10x30	3/8"-16x1"1/4
44	200	250	32	1"1/4	FM-3-1"-1/4"-M	43,7	51,6	7,5	14	24	73	79,5	30,2	58,7	10,5	M10x30	-
45	200	250	32	1"1/4	FM-3-1"-1/4"-U	43,7	51,6	7,5	14	24	73	79,5	30,2	58,7	12	-	7/16"-14x1"1/2
46	200	250	32	1"1/4	FM-3-1"-1/4"-M	43,7	51,6	7,5	14	24	73	79,5	30,2	58,7	12,5	M12x35	-
47	200	200	38	1"1/2	FM-3-1"-1/2"-C	50,8	61,1	7,5	16	25	83	94	35,7	69,9	13,5	M12x35	1/2"-13x1"1/2
48	200	200	38	1"1/2	FM-3-1"-1/2"-M	50,8	61,1	7,5	16	25	83	94	35,7	69,9	14,5	M14x35	-
49	160	200	51	2"	FM-3-2"-C	62,8	72,3	9	16	26	97	102	42,9	77,8	13,5	M12x35	1/2"-13x1"1/2
50	160	200	51	2"	FM-3-2"-M	62,8	72,3	9	16	26	97	102	42,9	77,8	14,5	M14x35	-
51	100	160	64	2"1/2	FM-3-2"1/2"-C	74,9	84,9	9	19	38	109	114,5	50,8	88,9	13,5	M12x40	1/2"-13x1"3/4
52	100	160	64	2"1/2	FM-3-2"1/2"-M	74,9	84,9	9	19	38	109	114,5	50,8	88,9	14,5	M14x40	-
53	100	160	76	3"	FM-3-3"-C	90,9	102,4	9	22	41	131	135	61,9	106,4	17	M16x50	5/8"-11x1"3/4
54	35	35	89	3"1/2	FM-3-3"1/2"-C	102,4	115,1	10,7	22	28	140	152	69,9	120,7	17	M16x50	5/8"-1"1x2
55	35	35	102	4"	FM-3-4"-C	115	127,8	10,7	25	35	125	162	77,8	130,2	17	M16x50	5/8"-11x2"
56	35	35	127	5"	FM-3-5"-C	140,5	153,2	10,7	28	41	181	184	92,1	152,4	17	M16x55	5/8"-11x2"1/4
<b>High Pressure Series (according to ISO 6162-2) 6000 PSI Series</b>																	
57	350	400	13	1/2"	FM-6-1/2"-C	24,6	32,5	7,2	16	22	48	56,6	18,2	40,5	8,7	M8x30	5/16"-18x1"1/4
58	350	400	19	3/4"	FM-6-3/4"-C	32,5	42	8,2	19	28	60	71	23,8	50,8	10,5	M10x35	3/8"-16x1"1/2
59	350	400	25	1"	FM-6-1"-U	38,8	48,4	9	24	33	70	81	27,8	57,2	12	-	7/16"-14x1"3/4
60	350	400	25	1"	FM-6-1"-M	38,8	48,4	9	24	33	70	81	27,8	57,2	13	M12x45	-
61	350	400	32	1"1/4	FM-6-1"-1/4"-C	44,5	54,8	9,8	27	38	78	95	31,8	66,6	13,5	M12x45	1/2"-13x1"3/4
62	350	400	32	1"1/4	FM-6-1"-1/4"-M	44,5	54,8	9,8	27	38	78	95	31,8	66,6	15	M14x45	-
63	350	400	38	1"1/2	FM-6-1"-1/2"-C	51,6	64,3	12	30	43	95	113	36,5	79,3	17	M16x55	5/8"-11x2"1/4
64	350	400	51	2"	FM-6-2"-C	67,6	80,2	12	37	52	114	133	44,5	96,8	21	M20x70	3/4"-10x2"3/4

How to Order	
Description	3000 PSI 1/2" SAE MONO FLANGE
Material	AISI316
Plating	Zinc Nickel
Part No	0041-4-Z

Mat.	SAE1040	A105	AISI304	AISI316	SAE1040
Code	-1	-2	-3	-4	-5

Plating	Trivalent	Hexavalent	Zinc Nickel
Code	-T	-H	-Z

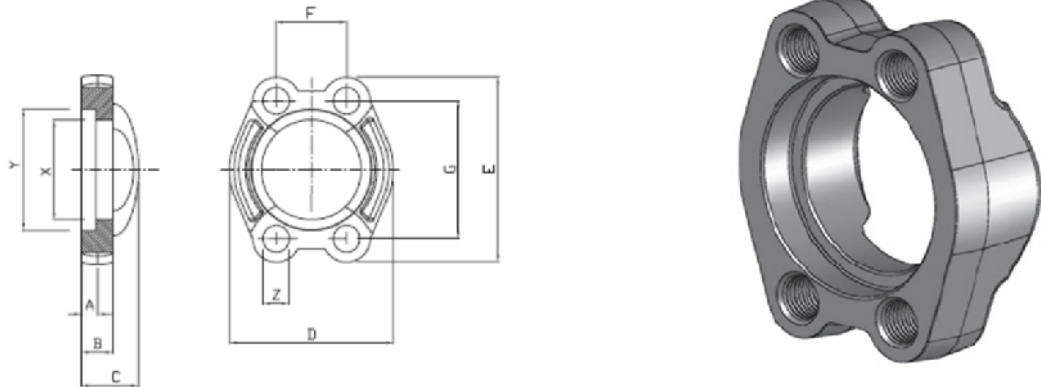


Max Working Pressure ( bar )					Dimensions (mm)											
Part No.	Bolts 8.8 (ML)	Bolts 10.9 (MH)	ISO [DN]	SAE (inch)	SAE SPLIT Flange	X	Y	A	B	C	E	F	G	Z	metric	UNC
<b>Standard Pressure Series (according to ISO6162-1) 3000 PSI Series</b>																
65	350	350	13	1/2"	FS-3-1/2"-C	24,3	31	6,2	13	19	54	8,75	38,1	8,7	M8x 25	5/16"-18x1"1/4
66	350	350	19	3/4"	FS-3-3/4"-C	32,2	38,9	6,2	14	22	65	11,15	47,6	10,5	M10x30	3/8"-16x1"1/4
67	250	315	25	1"	FS-3-1"-C	38,5	45,3	7,5	16	24	70	13,1	52,4	10,5	M10x30	3/8"-16x1"1/4
68	200	250	32	1"1/4	FS-3-1"-1/4"-M	43,7	51,6	7,5	14	24	79,5	15,1	58,7	10,5	M10x30	-
69	200	250	32	1"1/4	FS-3-1"-1/4"-U	43,7	51,6	7,5	14	24	79,5	15,1	58,7	12	-	7/16"-14x1"1/2
70	200	250	32	1"1/4	FS-3-1"-1/4"-M	43,7	51,6	7,5	14	24	79,5	15,1	58,7	12,5	M12x35	-
71	200	200	38	1"1/2	FS-3-1"-1/2"-C	50,8	61,1	7,5	16	25	94	17,85	69,9	13,5	M12x35	1/2"-13x1"1/2
72	200	200	38	1"1/2	FS-3-1"-1/2"-M	50,8	61,1	7,5	16	25	94	17,85	69,9	14,5	M14x35	-
73	160	200	51	2"	FS-3-2"-C	62,8	72,3	9	16	26	102	21,45	77,8	13,5	M12x35	1/2"-13x1"1/2
74	160	200	51	2"	FS-3-2"-M	62,8	72,3	9	16	26	102	21,45	77,8	14,5	M14x35	-
75	100	160	64	2"1/2	FS-3-2"1/2"-C	74,9	84,9	9	19	38	114,5	25,4	88,9	13,5	M12x40	1/2"-13x1"3/4
76	100	160	64	2"1/2	FS-3-2"1/2"-M	74,9	84,9	9	19	38	114,5	25,4	88,9	14,5	M14x40	-
77	100	160	76	3"	FS-3-3"-C	90,9	102,4	9	22	41	135	30,95	106,4	17	M16x50	5/8"-11x1"3/4
78	35	35	89	3"1/2	FS-3-3"1/2"-C	102,4	115,1	10,7	22	28	152	34,95	120,7	17	M16x50	5/8"-1"1x2
79	35	35	102	4"	FS-3-4"-C	115	127,8	10,7	25	35	162	38,9	130,2	17	M16x50	5/8"-11x2"
80	35	35	127	5"	FS-3-5"-C	140,5	153,2	10,7	28	41	184	46,05	152,4	17	M16x55	5/8"-11x2"1/4
<b>High Pressure Series (according to ISO 6162-2) 6000 PSI Series</b>																
81	350	400	13	1/2"	FS C-6-1/2"-C	24,6	32,5	7,2	16	22	56,6	9,1	40,5	8,7	M8x30	5/16"-18x1"1/4
82	350	400	19	3/4"	FS-6-3/4"-C	32,5	42	8,2	19	28	71	11,9	50,8	10,5	M10x35	3/8"-16x1"1/2
83	350	400	25	1"	FS-6-1"-U	38,8	48,4	9	24	33	81	13,9	57,2	11,9	-	7/16"-14x1"3/4
84	350	400	25	1"	FS-6-1"-M	38,8	48,4	9	24	33	81	13,9	57,2	13	M12x45	-
85	350	400	32	1"1/4	FS-6-1"-1/4"-C	44,5	54,8	9,8	27	38	95	15,9	66,6	13,5	M12x45	1/2"-13x1"3/4
86	350	400	32	1"1/4	FS-6-1"-1/4"-M	44,5	54,8	9,8	27	38	95	15,9	66,6	15	M14x45	-
87	350	400	38	1"1/2	FS-6-1"-1/2"-C	51,6	64,3	12	30	43	113	18,25	79,3	17	M16x55	5/8"-11x2"1/4
88	350	400	51	2"	FS-6-2"-C	67,6	80,2	12	37	52	133	22,25	96,8	21	M20x70	3/4"-10x2"3/4

How to Order	
Description	3000 PSI 1/2" SAE SPLIT FLANGE
Material	AISI 316
Plating	Zinc Nickel
Part No	0065-4-Z

Mat.	St52-3	A105	AISI316	SAE1040
Code	-1	-2	-4	-5

Plating	Trivalent	Hexavalent
Code	-T	-H



Max Working Pressure ( bar )		Nominal Size		Dimensions (mm)										Bolts	
Part No	Bolts 8.8	Bolts 10.9	ISO	SAE	Flange Clamps	X	Y	A	B	C	D	E	F	G	(Z)Thread

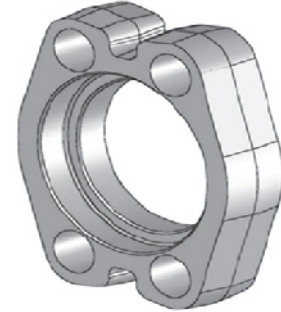
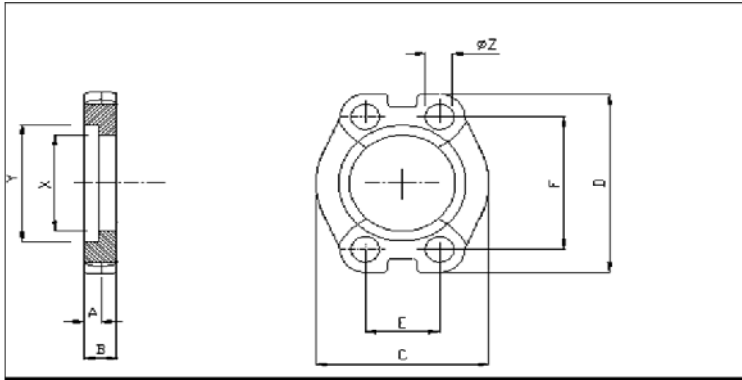
Standard Pressure Series (according to ISO6162-1) 3000 PSI Series															
0089	350	350	13	1/2"	TFM-3-1/2"-M	24,3	31	6,2	13	19	46	54	17,5	38,1	M 8
0090	350	350	19	3/4"	TFM-3-3/4"-M	32,2	38,9	6,2	14	22	52	65	22,3	47,6	M 10
0091	250	315	25	1"	TFM-3-1"-M	38,5	45,3	7,5	16	24	59	70	26,2	52,4	M 10
0092	200	250	32	1 1/4"	TFM-3-1 1/4"-M	43,7	51,6	7,5	14	24	73	79,5	30,2	58,7	M 10
0093	200	250	32	1 1/4"	TFM-3-1 1/4"-M	43,7	51,6	7,5	14	24	73	79,5	30,2	58,7	M12
0094	200	250	32	1 1/4"	TFM-3-1 1/4"-U	43,7	51,6	7,5	14	24	73	79,5	30,2	58,7	1/2 UNC
0095	200	200	38	1 1/2"	TFM-3-1 1/2"-M	50,8	61,1	7,5	16	25	83	94	35,7	69,9	M 12
0096	200	200	38	1 1/2"	TFM-3-1 1/2"-M	50,8	61,1	7,5	16	25	83	94	35,7	69,9	M 14
0097	160	200	51	2"	TFM-3-2"-M	62,8	72,3	9	16	26	97	102	42,9	77,8	M 12
0098	160	200	51	2"	TFM-3-2"-M	62,8	72,3	9	16	26	97	102	42,9	77,8	M14
0099	100	160	64	2 1/2"	TFM-3-2 1/2"-M	74,9	84,9	9	19	38	109	114,5	50,8	88,9	M12
0100	100	160	64	2 1/2"	TFM-3-2 1/2"-M	74,9	84,9	9	19	38	109	114,5	50,8	88,9	M14
0101	100	160	76	3"	TFM-3-3"-M	90,9	102,4	9	22	41	131	135	61,9	106,4	M 16
0102	35	35	89	3 1/2"	TFM-3-3 1/2"-M	102,4	115,1	10,7	22	28	140	152	69,9	120,7	M 16
0103	35	35	102	4"	TFM-3-4"-M	115	127,8	10,7	25	35	125	162	77,8	130,2	M 16
0104	35	35	127	5"	TFM-3-5"-M	140,5	153,2	10,7	28	41	181	184	92,1	152,4	M 16

High Pressure Series (according to ISO 6162-2) 6000 PSI Series															
0105	350	400	13	1/2"	TFM-6-1/2"-M	24,6	32,5	7,2	16	22	48	56,6	18,2	40,5	M 8
0106	350	400	19	3/4"	TFM-6-3/4"-M	32,5	42	8,2	19	28	60	71	23,8	50,8	M 10
0107	350	400	25	1"	TFM-6-1"-M	38,8	48,4	9	24	33	70	81	27,8	57,2	M 10
0108	350	400	25	1"	TFM-6-1"-M	38,8	48,4	9	24	33	70	81	27,8	57,2	M 12
0109	350	400	32	1 1/4"	TFM-6-1 1/4"-M	44,5	54,8	9,8	27	38	78	95	31,8	66,6	M12
0110	350	400	32	1 1/4"	TFM-6-1 1/4"-M	44,5	54,8	9,8	27	38	78	95	31,8	66,6	M14
0111	350	400	38	1 1/2"	TFM-6-1 1/2"-M	51,6	64,3	12	30	43	95	113	36,5	79,3	M 16
0112	350	400	51	2"	TFM-6-2"-M	67,6	80,2	12	37	52	114	133	44,5	96,8	M 20

How to Order	
Description	3000 PSI 1/2" SAE MONO FLANGE WITH TAPPED HOLES
Material	AlSi 316
Plating	Zinc Nickel
Part No	<b>0089-4-Z</b>

Mat.	St52-3	A105	AlSi304	AlSi316	SAE1040	
Code	-1	-2	-3	-4	-5	

Plating	Trivalent	Hexavalent	Zinc Nickel
Code	-T	-H	-Z



Max Working Pressure ( bar )		Nominal Size		Dimension (mm)											Bolts	
Part No.	Bolts 8.8	Bolts 10.9	ISO	SAE	Flat Mono	X	Y	A	B	C	D	E	F	Z	metric	UNC

**Standard Pressure Series (according to ISO6162-1) 3000 PSI Series**

0113	350	350	13	1/2"	FFM C-3-1/2"-C	24,3	31	6,2	13	45,6	54	17,5	38,1	8,7	M8x 25	5/16"-18x1"1/4
0114	350	350	19	3/4"	FFM-3-3/4"-C	32,2	38,9	6,2	14	51,8	65	22,3	47,6	10,5	M10x30	3/8"-16x1"1/4
0115	250	315	25	1"	FFM-3-1"-C	38,5	45,3	7,5	16	58,4	70	26,2	52,4	10,5	M10x30	3/8"-16x1"1/4
0116	200	250	32	1"1/4	FFM-3-1"-1/4"-M	43,7	51,6	7,5	16	73,2	79	30,2	58,7	10,5	M10x30	-
0117	200	250	32	1"1/4	FFM-3-1"-1/4"-U	43,7	51,6	7,5	16	73,2	79	30,2	58,7	12	-	7/16"-14x1"1/2
0118	200	250	32	1"1/4	FFM-3-1"-1/4"-M	43,7	51,6	7,5	16	73,2	79	30,2	58,7	12,5	M12x35	-
0119	200	200	38	1"1/2	FFM-3-1"-1/2"-C	50,8	61,1	7,5	16	82,2	94	35,7	69,9	13,5	M12x35	1/2"-13x1"1/2
0120	200	200	38	1"1/2	FFM-3-1"-1/2"-M	50,8	61,1	7,5	16	82,2	94	35,7	69,9	14,5	M14x35	-
0121	160	200	51	2"	FFM-3-2"-C	62,8	72,3	9	16	96,4	102	42,9	77,8	13,5	M12x35	1/2"-13x1"1/2
0122	160	200	51	2"	FFM-3-2"-M	62,8	72,3	9	16	96,4	102	42,9	77,8	14,5	M14x35	-
0123	160	200	51	2"1/2	FFM-3-2"1/2"-C	74,9	84,9	9	19	106	115	50,8	88,9	13,5	M12x40	1/2"-13x1"3/4
0124	160	200	51	2"1/2	FFM-3-2"1/2"-M	74,9	84,9	9	19	106	115	50,8	88,9	14,5	M14x40	-
0125	100	160	76	3"	FFM-3-3"-C	90,9	102,4	9	22	128,6	135	61,9	106,4	17	M16x50	5/8"-11x1"3/4

**High Pressure Series (according to ISO 6162-2) 6000 PSI Series**

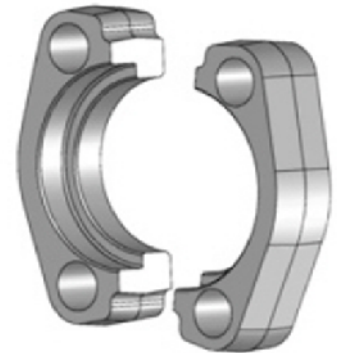
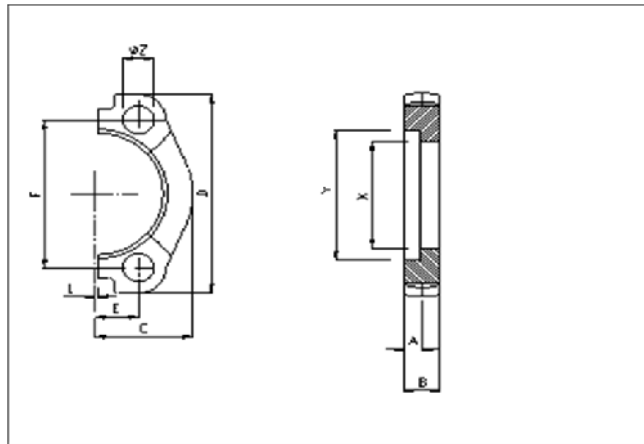
0126	350	400	13	1/2"	FFM C-6-1/2"-C	24,6	32,5	7,2	16	47,2	56	18,2	40,5	8,7	M8x30	5/16"-18x1"1/4
0127	350	400	19	3/4"	FFM-6-3/4"-C	32,5	42	8,2	20	60	71	23,8	50,8	10,5	M10x35	3/8"-16x1"1/2
0128	350	400	25	1"	FFM-6-1"-C	38,8	48,4	9	25	69,6	81	27,8	57,2	12	-	7/16"-14x1"3/4
0129				1"	FFM-6-1"-M	38,8	48,4	9	25	69,6	81	27,8	57,2	13	M12x45	-
0130	350	400	32	1 1/4"	FFM-6-1 1/4"-C	44,5	54,8	9,8	27	77,2	95	31,8	66,6	13,5	M12x45	1/2"-13x1"3/4
0131	350	400	32	1 1/4"	FFM-6-1 1/4"-M	44,5	54,8	9,8	27	77,2	95	31,8	66,6	15	M14x45	-
0132	350	400	38	1"1/2	FFM-6-1"-1/2"-C	51,6	64,3	12	30	95	113	36,5	79,3	17	M16x55	5/8"-11x2"1/4
0133	350	400	51	2"	FFM-6-2"-C	67,6	80,2	12	37	113,8	133	44,5	96,8	21	M20x70	3/4"-10x2"3/4

How to Order	
Description	3000 PSI 1/2" SAE FLAT FLANGE MONO
Material	AISI 316
Plating	Zinc Nickel
Part No	<b>0113-4-Z</b>

Mat.	St52-3	A105	AISI304	AISI316	SAE1040	
Code	-1	-2	-3	-4	-5	

Plating	Trivalent	Hexavalent	Zinc Nickel
Code	-T	-H	-Z





Max Working Pressure ( bar )			Nominal Size		Dimension (mm)											Bolts	
Part No.	Bolts 8.8	Bolts 10.9	ISO	SAE	Flat Split	X	Y	A	B	C	D	E	F	Z	metric	UNC	

### Standard Pressure Series (according to ISO6162-1) 3000 PSI Series

0134	350	350	13	1/2"	FFS-3-1/2"-C	24,3	31	6,2	13	22,8	54	8,75	38,1	8,7	M8x25	5/16"-18x1"1/4
0135	350	350	19	3/4"	FFS-3-3/4"-C	32,2	38,9	6,2	14	25,9	65	11,15	47,6	10,5	M10x30	3/8"-16x1"1/4
0136	250	315	25	1"	FFS-3-1"-C	38,5	45,3	7,5	16	29,2	70	13,1	52,4	10,5	M10x30	3/8"-16x1"1/4
0137	200	250	32	1"1/4	FFS-3-1"-1/4"-C	43,7	51,6	7,5	14	36,6	79	15,1	58,7	10,5	M10x30	-
0138	200	250	32	1"1/4	FFS-3-1"-1/4"-U	43,7	51,6	7,5	14	36,6	79	15,1	58,7	12	-	7/16"-14x1"1/2
0139	200	250	32	1"1/4	FFS-3-1"-1/4"-M	43,7	51,6	7,5	14	36,6	79	15,1	58,7	12,5	M12x35	-
0140	200	200	38	1"1/2	FFS-3-1"-1/2"-C	50,8	61,1	7,5	16	41,1	94	17,85	69,9	13,5	M12x35	1/2"-13x1"1/2
0141	200	200	38	1"1/2	FFS-3-1"-1/2"-M	50,8	61,1	7,5	16	41,1	94	17,85	69,9	14,5	M14x35	-
0142	160	200	51	2"	FFS-3-2"-C	62,8	72,3	9	16	48,2	102	21,45	77,8	13,5	M12x35	1/2"-13x1"1/2
0143	160	200	51	2"	FFS-3-2"-M	62,8	72,3	9	16	48,2	102	21,45	77,8	14,5	M14x35	-
0144	100	160	64	2"1/2	FFS-3-2"1/2"-C	74,9	84,9	9	19	53	115	25,4	88,9	13,5	M12x40	1/2"-13x1"3/4
0145	100	160	64	2"1/2	FFS-3-2"1/2"-M	74,9	84,9	9	19	53	115	25,4	88,9	14,5	M14x40	-
0146	100	160	76	3"	FFS-3-3"-C	90,9	102,4	9	22	64,3	135	30,95	106,4	17	M16x50	5/8"-11x1"3/4

### High Pressure Series (according to ISO 6162-2) 6000 PSI Series

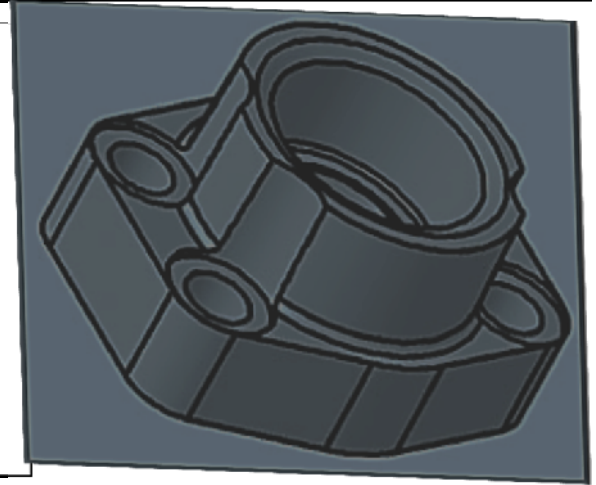
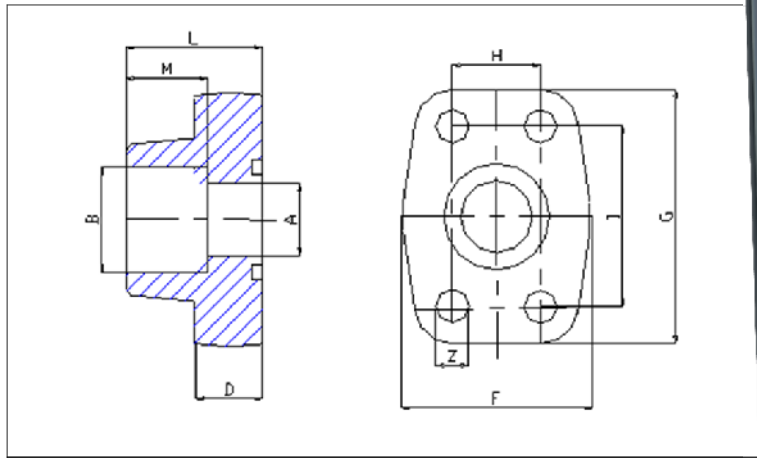
0147	350	400	13	1/2"	FFS C-6-1/2"-C	24,6	32,5	7,2	16	23,6	56	9,1	40,5	8,7	M8x30	5/16"-18x1"1/4
0148	350	400	19	3/4"	FFS-6-3/4"-C	32,5	42	8,2	19	30	71	11,9	50,8	10,5	M10x35	3/8"-16x1"1/2
0149	350	400	25	1"	FFS-6-1"-U	38,8	48,4	9	24	34,8	81	13,9	57,2	12	-	7/16"-14x1"3/4
0150	350	400	25	1"	FFS-6-1"-M	38,8	48,4	9	24	34,8	81	13,9	57,2	13	M12x45	-
0151	350	400	32	1"1/4	FFS-6-1"-1/4"-C	44,5	54,8	9,8	27	38,6	95	15,9	66,6	13,5	M12x45	1/2"-13x1"3/4
0152	350	400	32	1"1/4	FFS-6-1"-1/4"-M	44,5	54,8	9,8	27	38,6	95	15,9	66,6	15	M14x45	-
0153	350	400	38	1"1/2	FFS-6-1"-1/2"-C	51,6	64,3	12	30	47,5	113	18,25	79,3	17	M16x55	5/8"-11x2"1/4
0154	350	400	51	2"	FFS-6-2"-C	67,6	80,2	12	37	56,8	133	22,25	96,8	21	M20x70	3/4"-10x2"3/4

### How to Order

Description	3000 PSI 1/2" SAE FLAT FLANGE SPLIT
Material	AISI 316
Plating	Zinc Nickel
Part No	<b>0134-4-Z</b>

Mat.	St52-3	A105	AISI304	AISI316	SAE1040
Code	-1	-2	-3	-4	-5

Plating	Trivalent	Hexavalent	Zinc Nickel
Code	-T	-H	-Z



Max Working Pressure ( bar )			Nominal Size		Dimensions (mm)											Bolts
Part No.	Bolts 8.8	Bolts 10.9	ISO	SAE	STRAIGHT VERSION, ORING FACE	A	B	D	F	G	H	I	L	M	Z	metric.

### Standard Pressure Series (according to ISO6162-1) 3000 PSI Series

0155	350	350	13	1/2"	IOR SW 1/2"	13	22	16	47	57	17,5	38,1	36	18	8.7	M 8x30
0156	350	350	19	3/4"	IOR-3-SW-3/4"	19	28	18	50	67	22,3	47,6	36	18	10.5	M 10x35
0157	250	315	25	1"	IOR-3-SW-1"	25	35	18	54	72	26,2	52,4	38	18	10.5	M 10x35
0158	200	250	32	1 1/4"	IOR-3-SW-1 1/4"	31	43	21	68	82	30,2	58,7	41	20	10.6	M 10x40
0159	200	200	38	1 1/2"	IOR-3-SW-1 1/2"	38	51	25	79	96	35,7	69,9	44	22	13.5	M 12x45
0160	160	200	51	2"	IOR-3-SW-2"	47	61	25,5	88	102	42,9	77,8	45	24	13.5	M 12x45
0161	100	160	64	2 1/2"	IOR-3-SW-2 1/2"	63	73	26	101	115	50,8	88,9	50	28	13.5	M 12x45
0162	100	100	76	3"	IOR-3-SW-3"	70	90	27,5	124	137	61,9	106,4	50	28	17	M 16x50

### High Pressure Series (according to ISO 6162-2) 6000 PSI Series

0163	350	400	13	1/2"	IOR 6 SW 1/2"	13	22	16,5	47	57	18,2	40,5	36	19	8.7	M 8x30
0164	350	400	19	3/4"	IOR-6-SW-3/4"	18	28	20	54	72	23,8	50,8	36	20	10.5	M 10x35
0165	350	400	25	1"	IOR-6-SW-1"	22	35	24	68	82	27,8	57,2	44	22	13	M 12x45
0166	350	400	32	1 1/4"	IOR-6-SW-1 1/4"	32	42,8	27,5	79	95	31,8	66,6	44	22	15	M14x45
0167	350	400	38	1 1/2"	IOR-6-SW-1 1/2"	38	48,6	31	88	108	36,5	79,3	51	24	17	M 16 x 55
0168	350	400	51	2"	IOR-6-SW-2"	51	61	37	118	137	44,5	96,8	70	33	21	M 20 x 70

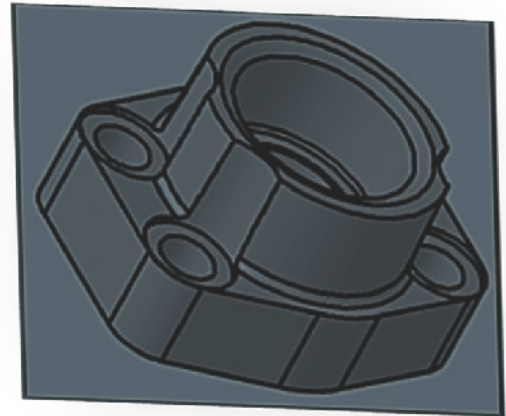
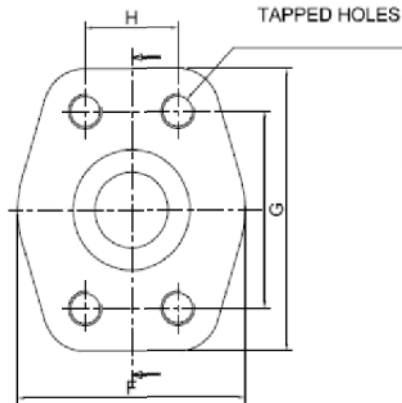
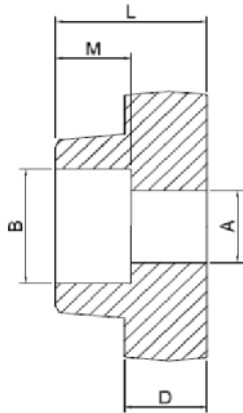
### How to Order

<b>Description</b>	3000 PSI 1/2" INTEGRATED PLAIN BORE WITH ORING GROOVE
<b>Material</b>	AISI 316
<b>Plating</b>	Zinc Nickel
<b>Part No</b>	<b>0155-4-Z</b>

<b>Mat.</b>	St52-3	A105	AISI304	AISI316	SAE1018	
<b>Code</b>	-1	-2	-3	-4	-6	

\*\*\*Unless Specified Parts will be Black Oxidised.

<b>Plating</b>	Trivalent	Hexavalent	Zinc Nickel
<b>Code</b>	-T	-H	-Z



Max Working Pressure ( bar )		Nominal Size			Dimensions (mm)										Threads
Part No.	Bolts 8.8	Bolts 10.9	ISO [DN]	SAE	STRAIGHT VERSION, ORING FACE	A	B	D	F	G	H	I	L	M	metric.

### Standard Pressure Series (according to ISO6162-1) 3000 PSI Series

0169	350	350	13	1/2"	IFL SW 1/2"	13	22	16	47	57	17,5	38,1	36	18	M 8
0170	350	350	19	3/4"	IFL-3-SW-3/4"	19	28	18	50	67	22,3	47,6	36	18	M 10
0171	250	315	25	1"	IFL-3-SW-1"	25	35	18	54	72	26,2	52,4	38	18	M 10
0172	200	250	32	1 1/4"	IFL-3-SW-1 1/4"	31	43	21	68	82	30,2	58,7	41	20	M10
0173	200	200	38	1 1/2"	IFL-3-SW-1 1/2"	38	51	25	79	96	35,7	69,9	44	22	M12
0174	160	200	51	2"	IFL-3-SW-2"	47	61	25,5	88	102	42,9	77,8	45	24	M12
0175	100	160	64	2 1/2"	IFL-3-SW-2 1/2"	63	73	26	101	115	50,8	88,9	50	28	M12
0176	100	100	76	3"	IFL-3-SW-3"	70	90	27,5	124	137	61,9	106,4	50	28	M 16

### High Pressure Series (according to ISO 6162-2) 6000 PSI Series

0177	350	400	13	1/2"	IFL 6 SW 1/2"	13	22	16,5	47	57	18,2	40,5	36	19	M 8
0178	350	400	19	3/4"	IFL-6-SW-3/4"	18	28	20	54	72	23,8	50,8	36	20	M 10
0179	350	400	25	1"	IFL-6-SW-1"	22	35	24	68	82	27,8	57,2	44	22	M 10
0180	350	400	32	1 1/4"	IFL-6-SW-1 1/4"	32	42,8	27,5	79	95	31,8	66,6	44	22	M12
0181	350	400	38	1 1/2"	IFL-6-SW-1 1/2"	38	48,6	31	88	108	36,5	79,3	51	24	M16
0182	350	400	51	2"	IFL-6-SW-2"	51	61	37	118	137	44,5	96,8	70	33	M20

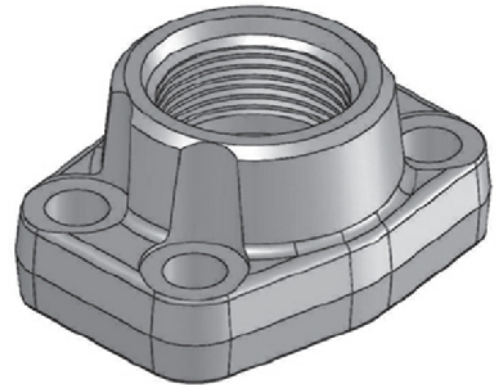
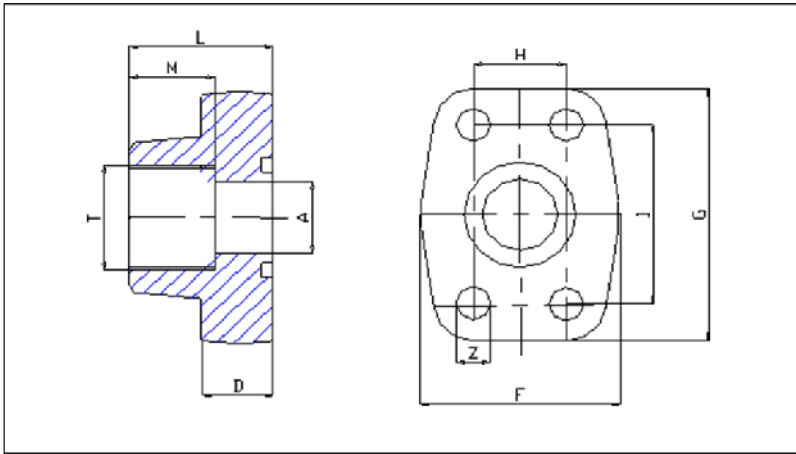
### How to Order

<b>Description</b>	3000 PSI 1/2" INTEGRATED FEMALE THREADED WITH FLAT FACE.
<b>Material</b>	AISI 316
<b>Plating</b>	Zinc Nickel
<b>Part No</b>	<b>0169-4-Z</b>

<b>Mat.</b>	St52-3	A105	AISI304	AISI316	SAE1018	
<b>Code</b>	-1	-2	-3	-4	-6	

\*\*\*Unless Specified Parts will be Black Oxidised.

<b>Plating</b>	Trivalent	Hexavalent	Zinc Nickel
<b>Code</b>	-T	-H	-Z



Max Working Pressure ( bar )			Nominal Size		Dimensions											Bolts
Part No.	Bolts 8.8	Bolts 10.9	ISO	SAE	STRAIGHT VERSION	A	D	F	G	H	I	L	M	T BSP	Z	metric.

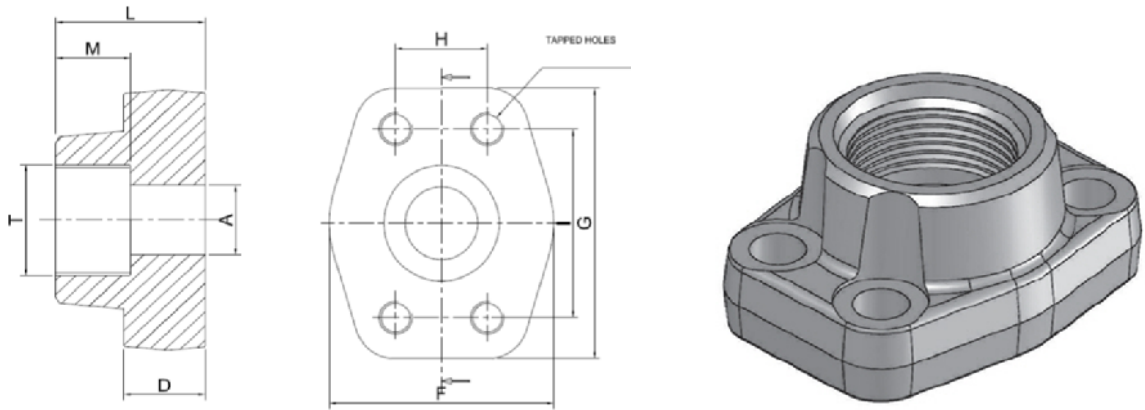
Standard Pressure Series (according to ISO6162-1) 3000 PSI Series																
0183	350	350	13	1/2"	IOR-3-FBSP-1/2"	13	16	47	57	17,5	38,1	36	15	1/2"	8.7	M 8x30
0184	350	350	19	3/4"	IOR-3-FBSP-3/4"	19	18	50	67	22,3	47,6	36	18	3/4"	10.5	M 10x35
0185	250	315	25	1"	IOR-3-FBSP-1"	25	18	54	72	26,2	52,4	38	20	1"	10.5	M 10x35
0186	200	250	32	1 1/4"	IOR-3-FBSP-1 1/4"	31	21	68	82	30,2	58,7	41	22	1 1/4"	10.5	M 10x40
0187	200	200	38	1 1/2"	IOR-3-FBSP-1 1/2"	38	25	79	96	35,7	69,9	44	24	1 1/2"	13.5	M 12x45
0188	160	200	51	2"	IOR-3-FBSP-2"	50	25,5	88	102	42,9	77,8	45	26	2"	13.5	M 12x45
0189	100	160	64	2 1/2"	IOR-3-FBSP-2 1/2"	63	26	101	115	50,8	88,9	50	30	2 1/2"	13.5	M 12x45
0190	100	160	76	3"	IOR-3-FBSP-3"	73	27,5	124	137	61,9	106,4	50	30	3"	17	M 16x50
High Pressure Series (according to ISO 6162-2) 6000 PSI Series																
0191	350	400	13	1/2"	IOR-6-FBSP-1/2"	14	16,5	47	57	18.2	40,5	36	15	1/2"	8.7	M 8x30
0192	350	400	19	3/4"	IOR-6-FBSP-3/4"	19	20	54	72	23.8	50,8	36	18	3/4"	10.5	M 10x35
0193	350	400	25	1"	IOR-6-FBSP-1"	25	24	68	82	27.8	57,2	44	20	1"	13	M 12x45
0194	350	400	32	1 1/4"	IOR-6-FBSP-1 1/4"	31	27,5	79	95	31,8	66,6	44	22	1 1/4"	15	M 14x45
0195	350	400	38	1 1/2"	IOR-6-FBSP-1 1/2"	38	31	88	108	36,5	79,3	51	24	1 1/2"	17	M 16 x 55
0196	350	400	51	2"	IOR-6-FBSP-2"	50	37	118	137	44,5	96,8	70	33	2"	21	M 20 x 70

How to Order	
Description	3000 PSI 1/2" INTEGRATED FEMALE BSP THREADED WITH ORING GROOVE
Material	AISI 316
Plating	Zinc Nickel
Part No	<b>0183-4-Z</b>

Mat.	St52-3	A105	AISI304	AISI316	SAE1018	
Code	-1	-2	-3	-4	-6	

\*\*\*Unless Specified Parts will be Black Oxidised.

Plating	Trivalent	Hexavalent	Zinc Nickel
Code	-T	-H	-Z



Max Working Pressure ( bar )			Nominal Size		Dimensions										
Part No.	Bolts 8.8	Bolts 10.9	ISO	SAE	STRAIGHT VERSION	A	D	F	G	H	I	L	M	T (BSP)	metric.

### Standard Pressure Series (according to ISO6162-1) 3000 PSI Series

0197	350	350	13	1/2"	IFL-3-FBSP-1/2"	13	16	47	57	17,5	38,1	36	15	1/2"	M 8
0198	350	350	19	3/4"	IFL-3-FBSP-3/4"	19	18	50	67	22,3	47,6	36	18	3/4"	M 10
0199	250	315	25	1"	IFL-3-FBSP-1"	25	18	54	72	26,2	52,4	38	20	1"	M 10
0200	200	250	32	1 1/4"	IFL-3-FBSP-1 1/4"	31	21	68	82	30,2	58,7	41	22	1 1/4"	M10
0201	200	200	38	1 1/2"	IFL-3-FBSP-1 1/2"	38	25	79	96	35,7	69,9	44	24	1 1/2"	M12
0202	160	200	51	2"	IFL-3-FBSP-2"	50	25,5	88	102	42,9	77,8	45	26	2"	M12
0203	100	160	64	2 1/2"	IFL-3-FBSP-2 1/2"	63	26	101	115	50,8	88,9	50	30	2 1/2"	M12
0204	100	160	76	3"	IFL-3-FBSP-3"	73	27,5	124	137	61,9	106,4	50	30	3"	M 16

### High Pressure Series (according to ISO 6162-2) 6000 PSI Series

0205	350	400	13	1/2"	IFL-6-FBSP-1/2"	14	16,5	47	57	18,2	40,5	36	15	1/2"	M 8
0206	350	400	19	3/4"	IFL-6-FBSP-3/4"	19	20	54	72	23,8	50,8	36	18	3/4"	M 10
0207	350	400	25	1"	IFL-6-FBSP-1"	25	24	68	82	27,8	57,2	44	20	1"	M 10
0208	350	400	32	1 1/4"	IFL-6-FBSP-1 1/4"	31	27,5	79	95	31,8	66,6	44	22	1 1/4"	M12
0209	350	400	38	1 1/2"	IFL-6-FBSP-1 1/2"	38	31	88	108	36,5	79,3	51	24	1 1/2"	M16
0210	350	400	51	2"	IFL-6-FBSP-2"	50	37	118	137	44,5	96,8	70	33	2"	M20

### How to Order

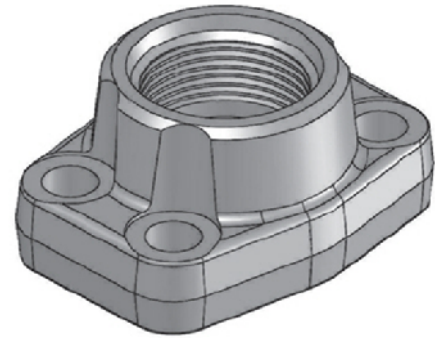
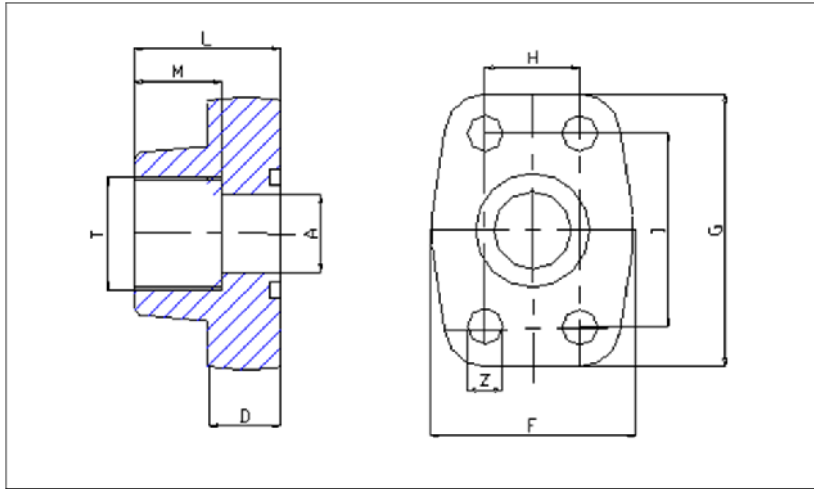
Description	3000 PSI 1/2" INTEGRATED FEMALE BSP THREADED WITH FLAT FACE
Material	AISI 316
Plating	Zinc Nickel
Part No	<b>0197-4-Z</b>

Mat.	St52-3	A105	AISI304	AISI316	SAE1018
Code	-1	-2	-3	-4	-6

\*\*\*Unless Specified Parts will be Black Oxidised.

Plating	Trivalent	Hexavalent	Zinc Nickel
Code	-T	-H	-Z





Part No.	Max Working Pressure ( bar )		Nominal Size		Dimensions											Bolts
	Bolts 8.8	Bolts 10.9	ISO	SAE	STRAIGHT VERSION	OA	D	F	G	H	I	L	M	T NPT	Z	metric.

### Standard Pressure Series (according to ISO6162-1) 3000 PSI Series

0211	350	350	13	1/2"	IOR-3-FNPT-1/2"	13	16	47	57	17,5	38,1	36	15	1/2"	8.7	M 8x30
0212	350	350	19	3/4"	IOR-3-FNPT-3/4"	19	18	50	67	22,3	47,6	36	18	3/4"	10.5	M 10x35
0213	250	315	25	1"	IOR-3-FNPT-1"	25	18	54	72	26,2	52,4	38	20	1"	10.5	M 10x35
0214	200	250	32	1 1/4"	IOR-3-FNPT-1 1/4"	31	21	68	82	30,2	58,7	41	22	1 1/4"	10.5	M 10x40
0215	200	200	38	1 1/2"	IOR-3-FNPT-1 1/2"	38	25	79	96	35,7	69,9	44	24	1 1/2"	13.5	M 12x45
0216	160	200	51	2"	IOR-3-FNPT-2"	50	25,5	88	102	42,9	77,8	45	26	2"	13.5	M 12x45
0217	100	160	64	2 1/2"	IOR-3-FNPT-2 1/2"	63	26	101	115	50,8	88,9	50	30	2 1/2"	13.5	M 12x45
0218	100	160	76	3"	IOR-3-FNPT-3"	73	27,5	124	137	61,9	106,4	50	30	3"	17	M 16x50

### High Pressure Series (according to ISO 6162-2) 6000 PSI Series

0219	350	400	13	1/2"	IOR-6-FNPT-1/2"	14	16,5	47	57	18.2	40,5	36	15	1/2"	8.7	M 8x30
0220	350	400	19	3/4"	IOR-6-FNPT-3/4"	19	20	54	72	23.8	50,8	36	18	3/4"	10.5	M 10x35
0221	350	400	25	1"	IOR-6-FNPT-1"	25	24	68	82	27.8	57,2	44	20	1"	13	M 12x45
0222	350	400	32	1 1/4"	IOR-6-FNPT-1 1/4"	31	27,5	79	95	31,8	66,6	44	22	1 1/4"	15	M14x45
0223	350	400	38	1 1/2"	IOR-6-FNPT-1 1/2"	38	31	88	108	36,5	79,3	51	24	1 1/2"	17	M 16 x 55
0224	350	400	51	2"	IOR-6-FNPT-2"	50	37	118	137	44,5	96,8	70	33	2"	21	M 20 x 70

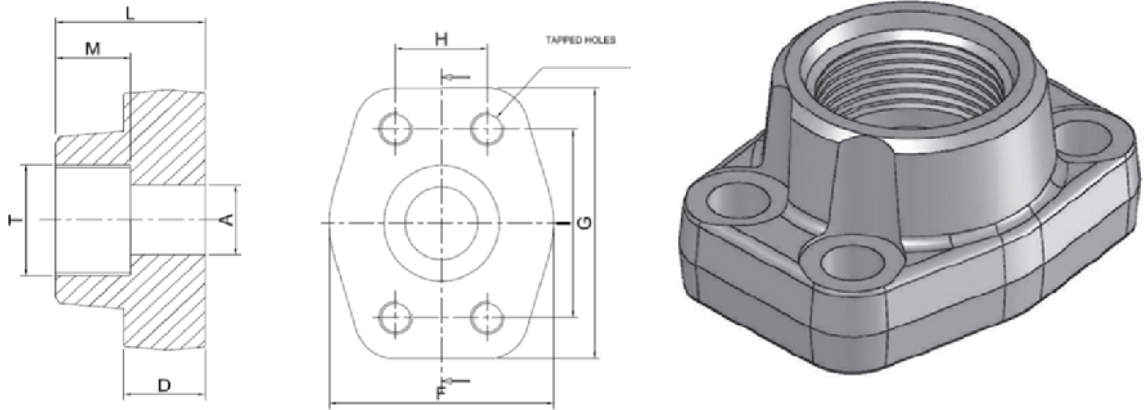
### How to Order

Description	3000 PSI 1/2" INTEGRATED FEMALE NPT THREADED WITH ORING GROOVE
Material	AISI 316
Plating	Zinc Nickel
Part No	<b>0211-4-Z</b>

Mat.	St52-3	A105	AISI304	AISI316	SAE1018	
Code	-1	-2	-3	-4	-6	

\*\*\*Unless Specified Parts will be Black Oxidised.

Plating	Trivalent	Hexavalent	Zinc Nickel
Code	-T	-H	-Z



Max Working Pressure ( bar )			Nominal Size		Dimensions											
Part No.	Bolts 8.8	Bolts 10.9	ISO	SAE	STRAIGHT VERSION	A	D	F	G	H	I	L	M	T(NPT)	metric.	

**Standard Pressure Series (according to ISO6162-1) 3000 PSI Series**

0225	350	350	13	1/2"	IFL-3-FNPT-1/2"	13	16	47	57	17,5	38,1	36	15	1/2"	M 8
0226	350	350	19	3/4"	IFL-3-FNPT-3/4"	19	18	50	67	22,3	47,6	36	18	3/4"	M 10
0227	250	315	25	1"	IFL-3-FNPT-1"	25	18	54	72	26,2	52,4	38	20	1"	M 10
0228	200	250	32	1 1/4"	IFL-3-FNPT-1 1/4"	31	21	68	82	30,2	58,7	41	22	1 1/4"	M10
0229	200	200	38	1 1/2"	IFL-3-FNPT-1 1/2"	38	25	79	96	35,7	69,9	44	24	1 1/2"	M12
0230	160	200	51	2"	IFL-3-FNPT-2"	50	25,5	88	102	42,9	77,8	45	26	2"	M12
0231	100	160	64	2 1/2"	IFL-3-FNPT-2 1/2"	63	26	101	115	50,8	88,9	50	30	2 1/2"	M12
0232	100	160	76	3"	IFL-3-FNPT-3"	73	27,5	124	137	61,9	106,4	50	30	3"	M 16

**High Pressure Series (according to ISO 6162-2) 6000 PSI Series**

0233	350	400	13	1/2"	IFL-6-FNPT-1/2"	14	16,5	47	57	18.2	40,5	36	15	1/2"	M 8
0234	350	400	19	3/4"	IFL-6-FNPT-3/4"	19	20	54	72	23.8	50,8	36	18	3/4"	M 10
0235	350	400	25	1"	IFL-6-FNPT-1"	25	24	68	82	27.8	57,2	44	20	1"	M 10
0236	350	400	32	1 1/4"	IFL-6-FNPT-1 1/4"	31	27,5	79	95	31,8	66,6	44	22	1 1/4"	M12
0237	350	400	38	1 1/2"	IFL-6-FNPT-1 1/2"	38	31	88	108	36,5	79,3	51	24	1 1/2"	M16
0238	350	400	51	2"	IFL-6-FNPT-2"	50	37	118	137	44,5	96,8	70	33	2"	M20

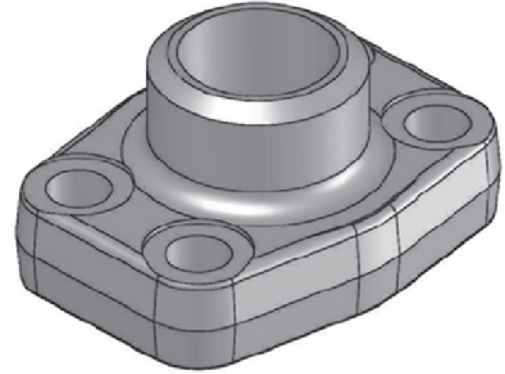
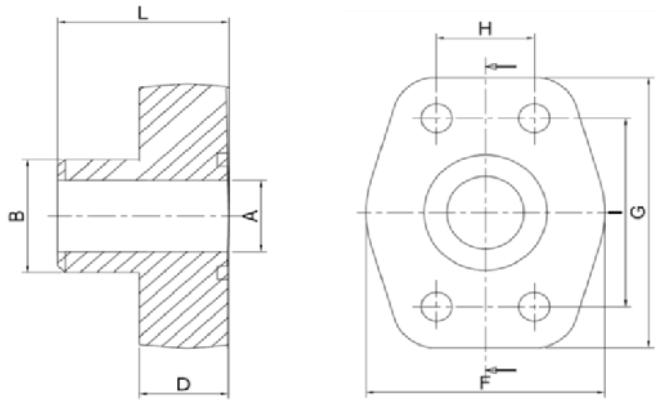
**How to Order**

<b>Description</b>	3000 PSI 1/2" INTEGRATED FEMALE NPT THREADED WITH FLAT FACE
<b>Material</b>	AISI 316
<b>Plating</b>	Zinc Nickel
<b>Part No</b>	<b>0225-4-Z</b>

<b>Mat.</b>	St52-3	A105	AISI304	AISI316	SAE1018
<b>Code</b>	-1	-2	-3	-4	-6

**\*\*\*Unless Specified Parts will be Black Oxidised.**

<b>Plating</b>	Trivalent	Hexavalent	Zinc Nickel
<b>Code</b>	-T	-H	-Z



Max Working Pressure ( bar )			Nominal Size		Dimensions										Bolt
Par No.	Bolts 8.8	Bolts 10.9	ISO	SAE	BUTTWELD FLANGE WITH O RING GROOVE	A	B	D	F	G	H	I	L	Z	Metric

ic

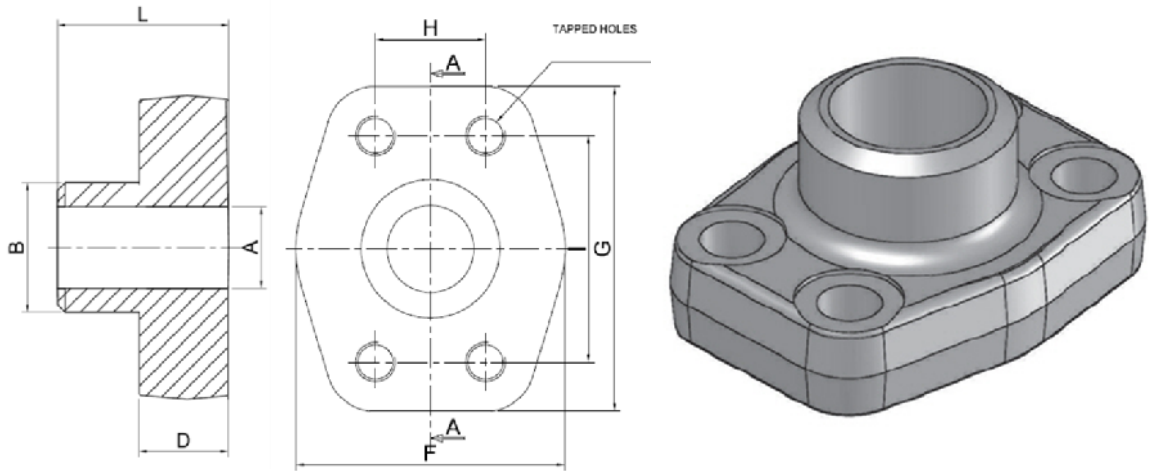
Standard Pressure Series (according to ISO6162-1) 3000 PSI Series															
0239	350	350	13	1/2"	IOR-3-BWT-1/2"	13	21.6	16	47	57	17,5	38,1	36	8.7	M 8 X 30
0240	350	350	19	3/4"	IOR-3-BWT-3/4"	19	27.2	18	50	67	22,3	47,6	36	10.5	M 10 X 35
0241	250	315	25	1"	IOR-3-BWT-1"	25	34	18	54	72	26,2	52,4	38	10.5	M 10 X 35
0242	200	250	32	1"1/4	IOR-3-BWT-1"1/4	32	42.8	21	68	82	30,2	58,7	41	10.5	M 10 X 40
0243	200	200	38	1"1/2	IOR-3-BWT-1"1/2	38	48.6	25	79	96	35,7	69,9	44	13.5	M 12 X 45
0244	160	200	51	2"	IOR-3-BWT-2"	51	61	25,5	88	102	42,9	77,8	45	13.5	M 12 X 45
0245	100	160	64	2"1/2	IOR-3-BWT-2"1/2	63	76.6	26	101	115	50,8	88,9	50	13.5	M 12 X 45
0246	100	160	76	3"	IOR-3-BWT-3"	71	90	27,5	127	137	61,9	106,4	50	17	M 16 X 50
High Pressure Series (according to ISO 6162-2) 6000 PSI Series															
0247	350	400	13	1/2"	IOR-6-BWT-1/2"	13	21.6	16,5	47	57	18,2	40,5	36	8.7	M 8 X 30
0248	350	400	19	3/4"	IOR-6-BWT-3/4"	19	28	19,5	54	72	23,8	50,8	36	10.5	M 10 X 35
0249	350	400	25	1"	IOR-6-BWT-1"	25	34	24,5	68	82	27,8	57,2	44	13	M 12 X 45
0250	350	400	32	1"1/4	IOR-6-BWT-1"1/4	29	42.8	27,5	79	95	31,8	66,6	44	15	M 14 X 45
0251	350	400	38	1"1/2	IOR-6-BWT-1"1/2	32	48.3	31	88	108	36,5	79,3	51	17	M 16 X 55
0252	350	400	51	2"	IOR-6-BWT-2"	43	61	37	118	137	44,5	96,8	70	21	M 20 X 70

How to Order	
Description	3000 PSI 1/2" INTEGRATED BUTT WELD FLANGE WITH ORING GROOVE
Material	AISI 316
Plating	Zinc Nickel
Part No	<b>0239-4-Z</b>

Mat.	St52-3	A105	AISI304	AISI316	SAE1018		
Code	-1	-2	-3	-4	-6		

\*\*\*Unless Specified Parts will be Black Oxidised.

Plating	Trivalent	Hexavalent	Zinc Nickel
Code	-T	-H	-Z



Max Working Pressure ( bar )			Nominal Size		Dimensions									Thread
Part No.	Bolts 8.8	Bolts 10.9	ISO	SAE	STRAIGHT VERSION FLAT FACE	A	B	D	F	G	H	I	L	metric.

### Standard Pressure Series (according to ISO6162-1) 3000 PSI Series

0253	350	350	13	1/2"	IFL-3-BWT-1/2"	13	21.6	16	47	57	17,5	38,1	36	M8
0254	350	350	19	3/4"	IFL-3-BWT-3/4"	19	27.2	18	50	67	22,3	47,6	36	M10
0255	250	315	25	1"	IFL-3-BWT-1"	25	34	18	54	72	26,2	52,4	38	M10
0256	200	250	32	1 1/4"	IFL-3-BWT-1 1/4"	32	42.8	21	68	82	30,2	58,7	41	M10
0257	200	200	38	1 1/2"	IFL-3-BWT-1 1/2"	38	48.6	25	79	96	35,7	69,9	44	M12
0258	160	200	51	2"	IFL-3-BWT-2"	51	61	25,5	88	102	42,9	77,8	45	M12
0259	100	160	64	2 1/2"	IFL-3-BWT-2 1/2"	63	76.6	26	101	115	50,8	88,9	50	M12
0260	100	160	76	3"	IFL-3-BWT-3"	71	90	27,5	127	137	61,9	106,4	50	M16

### High Pressure Series (according to ISO 6162-2) 6000 PSI Series

0261	350	400	13	1/2"	IFL-6-BWT-1/2"	13	21.6	16,5	47	57	18,2	40,5	36	M8
0262	350	400	19	3/4"	IFL-6-BWT-3/4"	19	28	19,5	54	72	23,8	50,8	36	M10
0263	350	400	25	1"	IFL-6-BWT-1"	25	34	24,5	68	82	27,8	57,2	44	M12
0264	350	400	32	1 1/4"	IFL-6-BWT-1 1/4"	29	42.8	27,5	79	95	31,8	66,6	44	M12
0265	350	400	38	1 1/2"	IFL-6-BWT-1 1/2"	32	48.3	31	88	108	36,5	79,3	51	M16
0266	350	400	51	2"	IFL-6-BWT-2"	43	61	37	118	137	44,5	96,8	70	M20

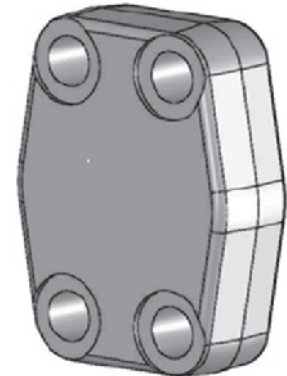
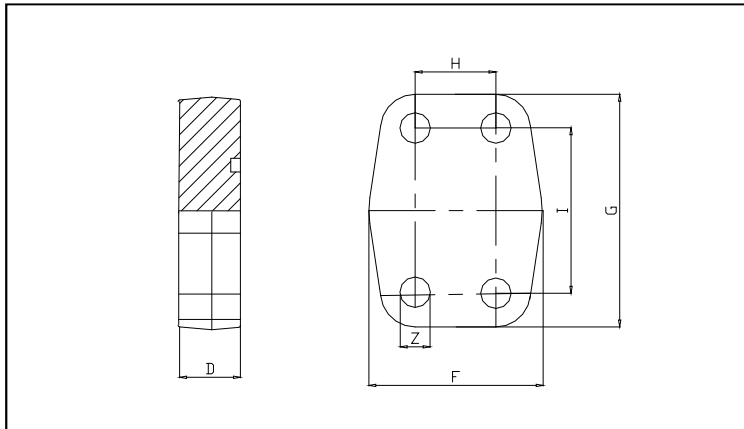
### How to Order

<b>Description</b>	3000 PSI 1/2" INTEGRATED BUTT WELD FLANGE WITH FLAT FACE.
<b>Material</b>	AISI 316
<b>Plating</b>	Zinc Nickel
<b>Part No</b>	<b>0253-4-Z</b>

Mat.	St52-3	A105	AISI304	AISI316	SAE1018
<b>Code</b>	-1	-2	-3	-4	-6

\*\*\*Unless Specified Parts will be Black Oxidised.

<b>Plating</b>	Trivalent	Hexavalent	Zinc Nickel
<b>Code</b>	-T	-H	-Z

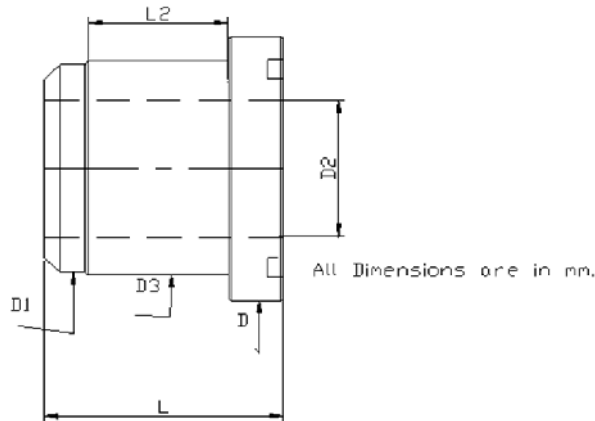


Max Working Pressure ( bar )		Nominal Size		Dimensions								Bolts	
Part No	Bolts 8.8 (ML)	Bolts 10.9 (MH)	ISO [DN]	SAE (inch)	BLIND MONO FLANGE	D	F	G	H	I	Z	metric	UNC
<b>Standard Pressure Series (according to ISO6162-1) 3000 PSI Series</b>													
384	350	350	13	1/2"	FMB-3---1/2"	16	47	57	17,5	38,1	8.8	M 8x30	5/16"-18x1"1/4
385	350	350	19	3/4"	FMB-3---3/4"	18	50	67	22,3	47,6	10.5	M 10x35	3/8"-16x1"1/2
386	250	315	25	1"	FMB-3---1"	19	54	72	26,2	52,4	10.5	M 10x35	3/8"-16x1"1/2
387	200	250	32	1"1/4	FMB-3---1"-1/4"	18	66	82	30,2	58,7	10.5	M 10x40	7/16"-14x1"1/2
388	200	200	38	1"1/2	FMB-3---1"-1/2"	20	79	96	35,7	69,9	13.5	M 12x45	1/2"-13x1"3/4
389	160	200	51	2"	FMB-3---2"	20	88	102	42,9	77,8	13.5	M 12x45	1/2"-13x1"3/4
390	100	160	64	2"1/2	FMB-3---2"-1/2"	20	100	114	50,8	88,9	13.5	M 12x45	1/2"-13x1"3/4
397	100	160	76	3"	FMB-3---3"	24	127	137	61.9	106.4	17	M 16x50	5/8" -11x2"
<b>High Pressure Series (according to ISO 6162-2) 6000 PSI Series</b>													
391	350	400	13	1/2"	FMB-6---1/2"	16	47	57	18,2	40,5	8.8	M 8x30	5/16"-18x1"1/4
392	350	400	19	3/4"	FMB-6---3/4"	19	54	72	23,8	50,8	10.5	M 10x35	3/8"-16x1"1/2
393	350	400	25	1"	FMB-6---1"	24	68	82	27,8	57,2	13	M 12x45	7/16"-14x1"3/4
394	350	400	32	1"1/4	FMB-6---1"-1/4"	27	79	95	31,8	66,6	15	M 14x50	
395	350	400	38	1"1/2	FMB-6---1"-1/2"	30	88	108	36,5	79,3	17	M 16x55	5/8"-11x2"1/4
396	350	400	51	2"	FMB-6---2"	30	115	134	44.5	96.8	21	M20x65	3/4"-10x2"3/4

How to Order	
Description	3000 PSI 1/2" SAE BLIND MONO FLANGE
Material	AISI 316
Plating	Zinc Nickel
Part No	Q100-4-Z

Mat.	St52-3	A105	AISI304	AISI316	SAE1040
Code	-1	-2	-3	-4	-5
***Blind flange in carbon steel comes with Balck Oxidised treatment.					
Plating	Trivalent	Hexavalent	Zinc Nickel		
Code	-T	-H	-Z		

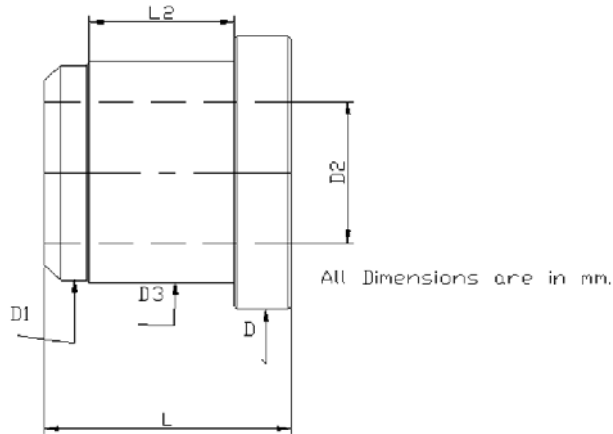




Max Working Pressure ( bar )			Nominal Size		Dimensions (mm)						
Part No	Bolts 8.8	Bolts 10.9	ISO	SAE	BUTT WELD ADAPTER	D	D1	D2	L	D3	L2

Standard Pressure Series (according to ISO6162-1) 3000 PSI Series											
267	350	350	13	1/2"	AOR-3-BWA-1/2"	30.2	22	13	41	24	16.5
268	350	350	19	3/4"	AOR-3-BWA-13/4"	38.1	28	19	50	31.5	16.5
269	250	315	25	1"	AOR-3-BWA-1"	44.37	38	25	50	38	-
270	200	250	32	1 1/4"	AOR-3-BWA-1 1/4"	50.8	42.4	31	55	43	17
271	200	200	38	1 1/2"	AOR-3-BWA-1 1/2"	60.35	50	38	57	50	-
272	160	200	51	2"	AOR-3-BWA-2"	71.4	61	47	57	62	18
273	100	160	64	2 1/2"	AOR-3-BWA-2 1/2"	84.1	74	58	60	74	-
274	100	160	76	3"	AOR-3-BWA-3"	101.6	90	70	60	90	-
High Pressure Series (according to ISO 6162-2) 6000 PSI Series											
278	350	400	13	1/2"	AOR-6-BWA-1/2"	31.8	22	13	34	24	16
279	350	400	19	3/4"	AOR-6-BWA-3/4"	41.3	28	18	38	32	21
280	350	400	25	1"	AOR-6-BWA-1"	47.5	38	22	40	38	-
281	350	400	32	1 1/4"	AOR-6-BWA-1 1/4"	54	42.4	28	37	44	29
282	350	400	38	1 1/2"	AOR-6-BWA-1 1/2"	63.5	51	32	50	51	-
283	350	400	51	2"	AOR-6-BWA-2"	79.4	61	41	58	61	-

How to Order		Mat.	St52-3	A105	AISI304	AISI316	SAE1018
Description	3000 PSI 1/2" BUTT WELD ADAPTER	Code	-1	-2	-3	-4	-6
Material	AISI 316						
Plating	Zinc Nickel	Plating	Trivalent	Hexavalent	Zinc Nickel		
Part No	0267-4-Z	Code	-T	-H	-Z		



Max Working Pressure ( bar )			Nominal Size		Dimensions (mm)						
Part No	Bolts 8.8	Bolts 10.9	ISO	SAE	BUTT WELD ADAPTER	D	D1	D2	L	D3	L2

**Standard Pressure Series (according to ISO6162-1) 3000 PSI Series**

284	350	350	13	1/2"	AFL-3-BWA-1/2"	30.2	22	13	41	24	16.5
285	350	350	19	3/4"	AFL-3-BWA-13/4"	38.1	28	19	50	31.5	16.5
286	250	315	25	1"	AFL-3-BWA-1"	44.37	38	25	50	38	-
287	200	250	32	1 1/4"	AFL-3-BWA-1 1/4"	50.8	42.4	31	55	43	17
288	200	200	38	1 1/2"	AFL-3-BWA-1 1/2"	60.35	50	38	57	50	-
289	160	200	51	2"	AFL-3-BWA-2"	71.4	61	47	57	62	18
290	100	160	64	2 1/2"	AFL-3-BWA-2 1/2"	84.1	74	58	60	74	-
291	100	160	76	3"	AFL-3-BWA-3"	101.6	90	70	60	90	-

**High Pressure Series (according to ISO 6162-2) 6000 PSI Series**

295	350	400	13	1/2"	AFL-6-BWA-1/2"	31.8	22	13	34	24	16
296	350	400	19	3/4"	AFL-6-BWA-3/4"	41.3	28	18	38	32	21
297	350	400	25	1"	AFL-6-BWA-1"	47.5	38	22	40	38	-
298	350	400	32	1 1/4"	AFL-6-BWA-1 1/4"	54	42.4	28	37	44	29
299	350	400	38	1 1/2"	AFL-6-BWA-1 1/2"	63.5	51	32	50	51	-
300	350	400	51	2"	AFL-6-BWA-2"	79.4	61	41	58	61	-

**How to Order**

<b>Description</b>	3000 PSI 1/2" BUTT WELD ADAPTER
<b>Material</b>	AISI 316
<b>Plating</b>	Zinc Nickel
<b>Part No</b>	<b>0284-4-Z</b>

<b>Mat.</b>	St52-3	A105	AISI304	AISI316
<b>Code</b>	-1	-2	-3	-4

<b>Plating</b>	Trivalent	Hexavalent	Zinc Nickel
<b>Code</b>	-T	-H	-Z



## PRODUCTS

- Code 6162 SAE Flanges
- Socket weld / But weld Flanges
- Oval Flanges
- Hydraulic Ferrules / Sleeves
- Hydraulic Fittings
- Hydraulic Clamps
- Machined Components
- Pins / Bushings

## SOLUTIONS

- Import Substitution
- Contract Manufacturing
- Joint Venture

| India

| Europe

| USA

Mr. Kedar Gowande  
Director  
+91 9561 334433  
kedar@tria-group.com

sales@tria-group.com  
mkt@tria-group.com

Mr. Sachin Joshi  
Director  
+91 9822095266  
sachin@tria-group.com