

Weld Fittings



Unit # 2 & 3, Swamini Industrial Estate II,
Opp Varun Industries, Waliv, Vasai (East),
Dist. Thane - 401 208, INDIA

Tel: +91-250-2453813 / 2453814 / 6453429

Fax: +91-250-2453651

Email : sales@tubefiteng.com

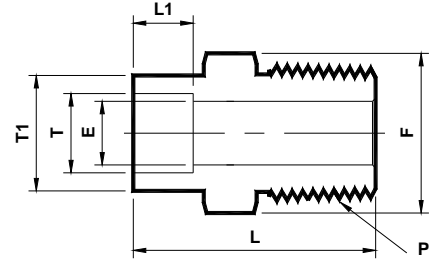
Website: <http://www.tubefiteng.com>



- Weld Fittings -

Male Connector

Fractional Tube Socket Weld x NPT (M)
(F - WMC - N)



1

TubeFit Part No.	Equivalent Part No. Type 1	Equivalent Part No. Type 2	TUBE OD Ø T	NPT ^③ Male Pipe Size P	L	ØE ^①	ØT1	L1	Hex F
Dimensions in Inches									
4 - WMC - 4N	SS - 4 - TSW - 1 - 4	-----	1/4	1/4	1.15	0.18	0.48	0.28	9/16
6 - WMC - 4N	SS - 6 - TSW - 1 - 4	-----	3/8	1/4	1.25	0.28	0.60	0.31	5/8
6 - WMC - 6N	SS - 6 - TSW - 1 - 6	-----		3/8	1.25	0.28	0.60	0.31	11/16
6 - WMC - 8N	SS - 6 - TSW - 1 - 8	-----	1/2	1/2	1.47	0.28	0.60	0.31	7/8
8 - WMC - 4N	SS - 8 - TSW - 1 - 4	-----		1/4	1.31	0.28	0.73	0.38	3/4
8 - WMC - 6N	SS - 8 - TSW - 1 - 6	-----		3/8	1.31	0.37	0.73	0.38	3/4
8 - WMC - 8N	SS - 8 - TSW - 1 - 8	-----	1/2	1/2	1.53	0.40	0.73	0.38	7/8

① The 'E' Dimension is the minimum opening.

② NPT thread as per ANSI B 1.20.1.

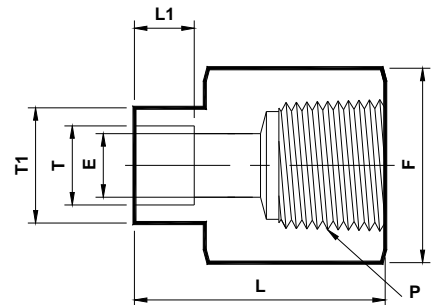
NOTE : 1) Dimensions for reference only and are subject to change.

- ALL PART NUMBERS ARE PROPRIETARY OF THEIR RESPECTIVE OWNERS. -

- Weld Fittings -

Female Connector

Fractional Tube Socket Weld x NPT (F)
(F - WFC - N)



2

TubeFit Part No.	Equivalent Part No. Type 1	Equivalent Part No. Type 2	TUBE OD Ø T	NPT ^③ Female Pipe Size P	L	ØE ^①	ØT1	L1	Hex F
Dimensions in Inches									
2 - WFC - 2N	SS - 2 - TSW - 7 - 2	-----	1/8	1/8	0.83	0.09	0.29	0.10	9/16
4 - WFC - 2N	SS - 4 - TSW - 7 - 2	-----	1/4	1/8	1.05	0.18	0.48	0.28	9/16
4 - WFC - 4N	SS - 4 - TSW - 7 - 4	-----		1/4	1.18	0.18	0.48	0.28	3/4
6 - WFC - 4N	SS - 6 - TSW - 7 - 4	-----	1/2	1/4	1.24	0.28	0.60	0.31	3/4
8 - WFC - 6N	SS - 8 - TSW - 7 - 6	-----		3/8	1.36	0.40	0.73	0.38	7/8
8 - WFC - 8N	SS - 8 - TSW - 7 - 8	-----		1/2	1.59	0.40	0.73	0.38	1-1/16
10 - WFC - 8N	SS - 10 - TSW - 7 - 8	-----	3/4	1/2	1.65	0.50	0.92	0.41	1-1/16
12 - WFC - 12N	SS - 12 - TSW - 7 - 12	-----		3/4	1.73	0.62	1.04	0.44	1-1/4

① The 'E' Dimension is the minimum opening.

② NPT thread as per ANSI B 1.20.1.

NOTE : 1) Dimensions for reference only and are subject to change.

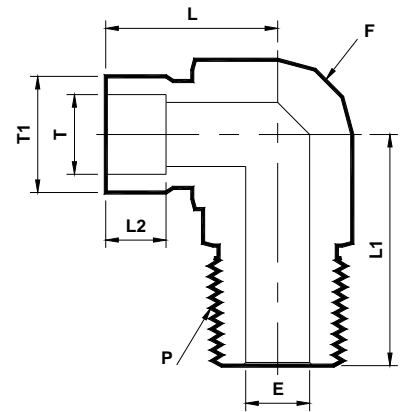
- ALL PART NUMBERS ARE PROPRIETARY OF THEIR RESPECTIVE OWNERS. -



- Weld Fittings -

Male Elbow

Fractional Tube Socket Weld x NPT (M)
(F - WME - N)



3

Tubefit Part No.	Equivalent Part No. Type 1	Equivalent Part No. Type 2	TUBE OD Ø T	NPT [®] Male Pipe Size P	L	L1	ØE ^①	ØT1	L2	Hex F
Dimensions in Inches										
4 - WME - 4N	SS - 4 - TSW - 2 - 4	-----	1/4	1/4	0.79	1.05	0.18	0.48	0.28	9/16
6 - WME - 4N	SS - 6 - TSW - 2 - 4	-----		1/4	1.04	1.05	0.28	0.62	0.31	9/16
6 - WME - 6N	SS - 6 - TSW - 2 - 6	-----	3/8	3/8	0.97	1.17	0.28	0.60	0.31	11/16
6 - WME - 8N	SS - 6 - TSW - 2 - 8	-----		1/2	1.02	1.45	0.28	0.60	0.31	7/8
8 - WME - 8N	SS - 8 - TSW - 2 - 8	-----	1/2	1/2	1.08	1.45	0.40	0.73	0.38	7/8
12 - WME - 12N	SS - 12 - TSW - 2 - 12	-----	3/4	3/4	1.56	1.56	0.62	1.12	0.44	1-1/16

① The 'E' Dimension is the minimum opening.

② NPT thread as per ANSI B 1.20.1.

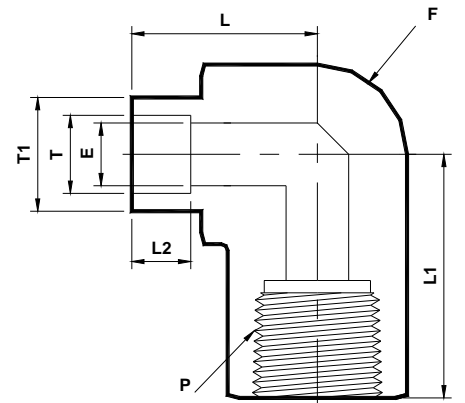
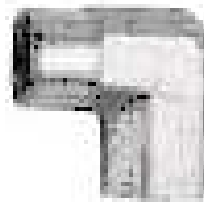
NOTE : 1) Dimensions for reference only and are subject to change.

- ALL PART NUMBERS ARE PROPRIETARY OF THEIR RESPECTIVE OWNERS. -

- Weld Fittings -

Female Elbow

Fractional Tube Socket Weld x NPT (F)
(F - WFE - N)



4

Tubefit Part No.	Equivalent Part No. Type 1	Equivalent Part No. Type 2	TUBE OD Ø T	NPT [®] Female Pipe Size P	L	L1	ØE ^①	ØT1	L2	Hex F
Dimensions in Inches										
4 - WFE - 4N	SS - 4 - TSW - 8 - 4	-----	1/4	1/4	0.90	1.17	0.19	0.48	0.28	3/4
6 - WFE - 4N	SS - 6 - TSW - 8 - 4	-----	3/8	1/4	0.99	1.17	0.28	0.60	0.31	3/4
6 - WFE - 8N	SS - 6 - TSW - 8 - 8	-----		1/2	1.13	1.56	0.28	0.60	0.31	1-1/16
8 - WFE - 8N	SS - 8 - TSW - 8 - 8	-----	1/2	1/2	1.19	1.56	0.40	0.73	0.38	1-1/16

① The 'E' Dimension is the minimum opening.

② NPT thread as per ANSI B 1.20.1.

NOTE : 1) Dimensions for reference only and are subject to change.

- ALL PART NUMBERS ARE PROPRIETARY OF THEIR RESPECTIVE OWNERS. -

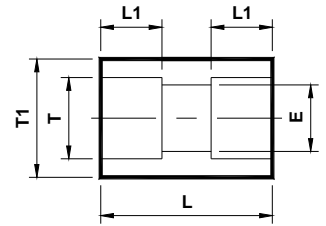


- Weld Fittings -

5

Tube Union

Fractional Tube Socket Weld Ends
(F - WTU)



TubeFit Part No.	Equivalent Part No. Type 1	Equivalent Part No. Type 2	TUBE OD Ø T	L	ØT1	ØE ^①	L1
Dimensions in Inches							
4 - WTU	SS - 4 - TSW - 6	-----	1/4	0.75	0.48	0.18	0.28
6 - WTU	SS - 6 - TSW - 6	-----	3/8	0.88	0.60	0.28	0.31
8 - WTU	SS - 8 - TSW - 6	-----	1/2	1.06	0.73	0.40	0.38
10 - WTU	SS - 10 - TSW - 6	-----	5/8	1.19	0.92	0.50	0.41
12 - WTU	SS - 12 - TSW - 6	-----	3/4	1.31	1.04	0.62	0.44
16 - WTU	SS - 16 - TSW - 6	-----	1	1.44	1.36	0.87	0.62

① The 'E' Dimension is the minimum opening.

NOTE : 1) Dimensions for reference only and are subject to change.

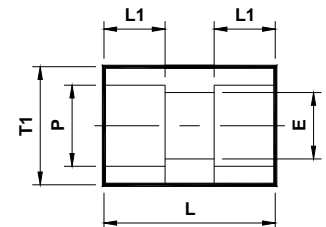
- ALL PART NUMBERS ARE PROPRIETARY OF THEIR RESPECTIVE OWNERS. -

- Weld Fittings -

6

Pipe Union

Pipe Socket Weld Ends
(F - WPU)



TubeFit Part No.	Equivalent Part No. Type 1	Equivalent Part No. Type 2	PIPE Size Ø P	L	ØT1	L1	ØE ^①
Dimensions in Inches							
4 - WPU	SS - 4 - PSW - 6	-----	1/4	1.06	0.98	0.38	0.40
6 - WPU	SS - 6 - PSW - 6	-----	3/8	1.12	1.11	0.44	0.50
8 - WPU	SS - 8 - PSW - 6	-----	1/2	1.12	1.36	0.50	0.73
12 - WPU	SS - 12 - PSW - 6	-----	3/4	1.75	1.48	0.62	0.93
16 - WPU	SS - 16 - PSW - 6	-----	1	1.75	1.86	0.62	1.06

① The 'E' Dimension is the minimum opening.

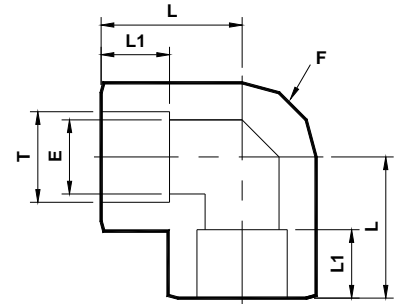
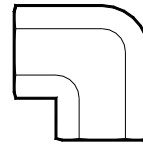
NOTE : 1) Dimensions for reference only and are subject to change.

- ALL PART NUMBERS ARE PROPRIETARY OF THEIR RESPECTIVE OWNERS. -



- Weld Fittings -

Union Elbow
Fractional Socket Weld Ends
(F - WUE)



7

Tubefit Part No.	Equivalent Part No. Type 1	Equivalent Part No. Type 2	TUBE OD Ø T	L	ØE ^①	L1	Hex F
Dimensions in Inches							
4 - WUE	SS - 4 - TSW - 9	-----	1/4	0.86	0.18	0.28	7/16
6 - WUE	SS - 6 - TSW - 9	-----	3/8	1.04	0.28	0.31	9/16
8 - WUE	SS - 8 - TSW - 9	-----	1/2	1.17	0.40	0.38	11/16
10 - WUE	SS - 10 - TSW - 9	-----	5/8	1.42	0.50	0.41	13/16
12 - WUE	SS - 12 - TSW - 9	-----	3/4	1.56	0.62	0.44	1
16 - WUE	SS - 16 - TSW - 9	-----	1	1.92	0.87	0.62	1-1/4

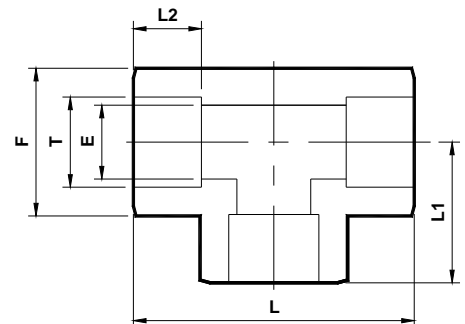
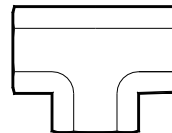
① The 'E' Dimension is the minimum opening.

NOTE : 1) Dimensions for reference only and are subject to change.

- ALL PART NUMBERS ARE PROPRIETARY OF THEIR RESPECTIVE OWNERS. -

- Weld Fittings -

Union Tee
Fractional Tube Socket Weld Ends
(F - WUT)



8

Tubefit Part No.	Equivalent Part No. Type 1	Equivalent Part No. Type 2	TUBE OD Ø T	L	L1	ØE ^①	L2	Hex F
Dimensions in Inches								
2 - WUT	SS - 2 - TSW - 3	-----	1/8	1.18	0.59	0.09	0.10	7/16
4 - WUT	SS - 4 - TSW - 3	-----	1/4	1.72	0.86	0.18	0.28	9/16
6 - WUT	SS - 6 - TSW - 3	-----	3/8	2.08	1.04	0.28	0.31	9/16
8 - WUT	SS - 8 - TSW - 3	-----	1/2	2.34	1.17	0.40	0.38	11/16
10 - WUT	SS - 10 - TSW - 3	-----	5/8	2.84	1.42	0.50	0.41	13/16
12 - WUT	SS - 12 - TSW - 3	-----	3/4	3.12	1.56	0.62	0.44	1
16 - WUT	SS - 16 - TSW - 3	-----	1	3.84	1.92	0.87	0.62	1-1/4

① The 'E' Dimension is the minimum opening.

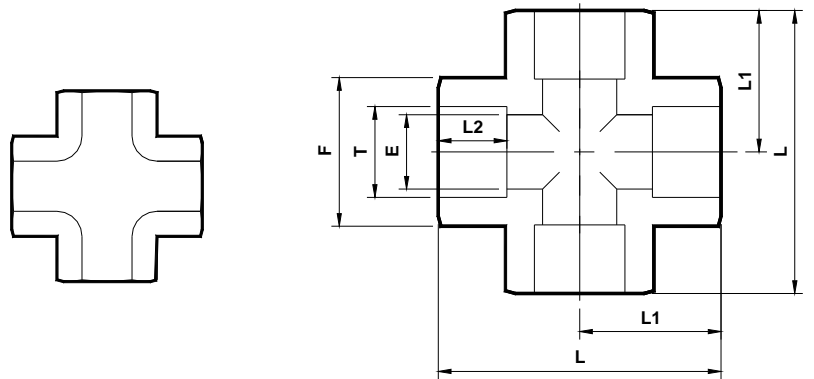
NOTE : 1) Dimensions for reference only and are subject to change.

- ALL PART NUMBERS ARE PROPRIETARY OF THEIR RESPECTIVE OWNERS. -



- Weld Fittings -

Union Cross
Fractional Tube Socket Weld Ends
(F - WUC)



Tubefit Part No.	Equivalent Part No. Type 1	Equivalent Part No. Type 2	TUBE OD Ø T	L	L1	ØE ^①	L2	Hex F
Dimensions in Inches								
4 - WUC	SS - 4 - TSW - 4	-----	1/4	1.72	0.86	0.18	0.28	7/16
6 - WUC	SS - 6 - TSW - 4	-----	3/8	2.08	1.04	0.28	0.31	9/16
8 - WUC	SS - 8 - TSW - 4	-----	1/2	2.34	1.17	0.40	0.38	11/16
12 - WUC	SS - 12 - TSW - 4	-----	3/4	3.12	1.56	0.62	0.44	1
16 - WUC	SS - 16 - TSW - 4	-----	1	3.84	1.92	0.87	0.62	1-1/4

① The 'E' Dimension is the minimum opening.

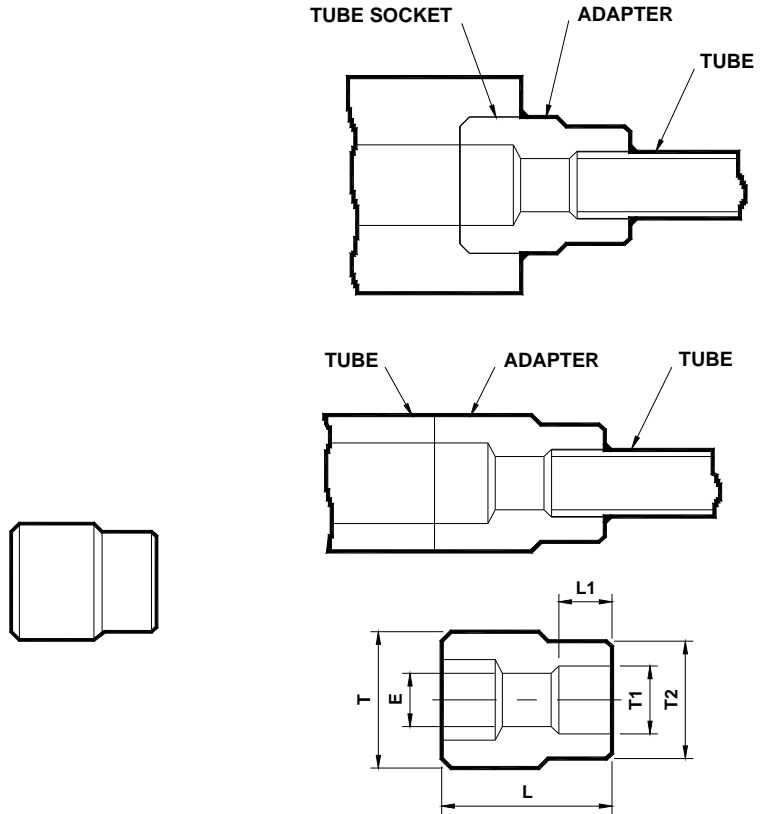
NOTE : 1) Dimensions for reference only and are subject to change.



- Weld Fittings -

Reducing Adapter

Fractional Tube Butt Weld or Tube Socket Weld x Tube Socket Weld
(F - WTRA - F)



Tubefit Part No.	Equivalent Part No. Type 1	Equivalent Part No. Type 2	TUBE OD Ø T	TUBE Socket Size ØT1	L	L1	ØT2	ØE ①
Dimensions in Inches								
4 - WTRA - 2	SS - 4 - MTW - A - 2TSW	-----	1/4	1/8	0.56	0.10	0.29	0.09
6 - WTRA - 4	SS - 6 - MTW - A - 4TSW	-----	3/8	1/4	0.75	0.28	0.48	0.18
8 - WTRA - 4	SS - 8 - MTW - A - 4TSW	-----	1/2	1/4	0.88	0.28	0.50	0.18
8 - WTRA - 6	SS - 8 - MTW - A - 6TSW	-----		3/8	0.88	0.31	0.60	0.32
12- WTRA - 8	SS - 12 - MTW - A - 8TSW	-----	3/4	1/2	1.12	0.38	0.75	0.40
16 - WTRA - 8	SS - 16 - MTW - A - 8TSW	-----	1	1/2	1.38	0.38	0.73	0.40

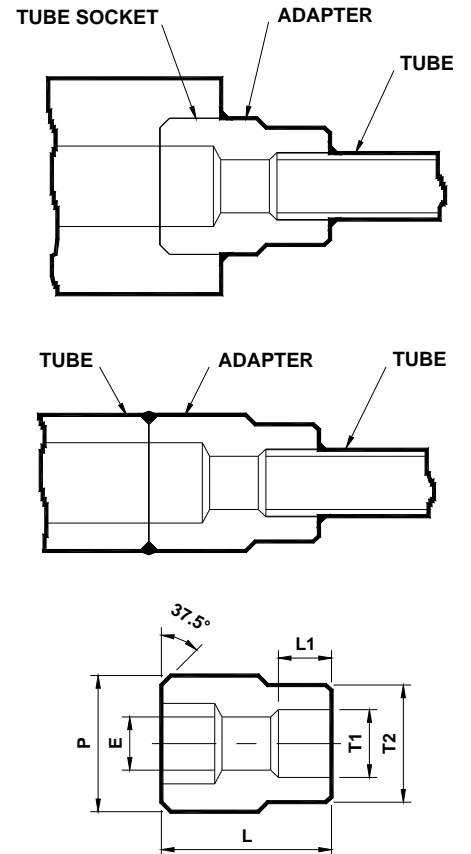
① The 'E' Dimension is the minimum opening.

NOTE : 1) Dimensions for reference only and are subject to change.



- Weld Fittings -

Reducing Adapter
Fractional Pipe Butt Weld or Pipe Socket Weld x Tube Socket Weld
(P - WPRA - F)



Tubefit Part No.	Equivalent Part No. Type 1	Equivalent Part No. Type 2	TUBE OD Ø P	TUBE Socket Size ØT1	L	L1	ØT2	ØE ①
Dimensions in Inches								
4P - WPRA - 4	SS - 4 - MPW - A - 4TSW	-----	1/4	1/4	0.88	0.28	0.48	0.18
6P - WPRA - 6	SS - 6 - MPW - A - 6TSW	-----	3/8	3/8	1.03	0.31	0.60	0.28
6P - WPRA - 8	SS - 6 - MPW - A - 8TSW	-----		1/2	1.00	0.38	0.73	0.42
8P - WPRA - 4	SS - 8 - MPW - A - 4TSW	-----	1/2	1/4	1.12	0.28	0.48	0.18
8P - WPRA - 6	SS - 8 - MPW - A - 6TSW	-----		3/8	1.12	0.31	0.60	0.28
8P - WPRA - 8	SS - 8 - MPW - A - 8TSW	-----		1/2	1.19	0.38	0.73	0.40
12P - WPRA - 6	SS - 12 - MPW - A - 6TSW	-----	3/4	3/8	1.50	0.31	0.60	0.28
12P - WPRA - 8	SS - 12 - MPW - A - 8TSW	-----		1/2	1.50	0.38	0.73	0.40
12P - WPRA - 12	SS - 12 - MPW - A - 12TSW	-----		3/4	1.50	0.44	1.06	0.62
16 - WPRA - 6	SS - 16 - MPW - A - 6TSW	-----	1	3/8	1.38	0.31	0.60	0.28
16 - WPRA - 8	SS - 16 - MPW - A - 8TSW	-----		1/2	1.56	0.38	0.73	0.40

① The 'E' Dimension is the minimum opening.

NOTE : 1) Dimensions for reference only and are subject to change.