

Pipe Fittings

Part - 1

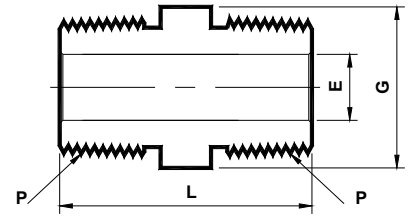
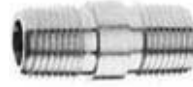


163/C, Oshiwara Industrial Centre, Link Road,
Goregaon (W), Mumbai-400104. INDIA
Tel : +91-22-2876 6982 / 56903564 / 55727627
Fax : +91-22-28766998
Email : sales@tubefiteng.com / tubefit@vsnl.com
Website : www.tubefiteng.com



- Precision pipe Fitting -
-(1/16"-2" NPT, 1/8"-1/2" BSP/ISO, SAE/MS) -

Close Nipple
NPT (M) x NPT (M)
(N - PCN)



Tubefit Part No.	Equivalent Part No. Type 1	Equivalent Part No. Type 2	NPT ^② Male Pipe Size P	L	ØE ^①	ØG
Dimensions in Inches						
1N - PCN	-----	1 - 1 MCN	1/16x27	0.75	0.12	5/16
2N - PCN	- 2 - CN	2 - 2 MCN	1/8x27	0.75	0.19	7/16
4N - PCN	- 4 - CN	4 - 4 MCN	1/4x18	1.12	0.28	9/16
6N - PCN	- 6 - CN	6 - 6 MCN	3/8x18	1.12	0.38	11/16
8N - PCN	- 8 - CN	8 - 8 MCN	1/2x14	1.50	0.47	7/8
12N - PCN	- 12 - CN	12 - 12 MCN	3/4x14	1.50	0.62	1-1/16
16N - PCN	- 16 - CN	16 - 16 MCN	1x11.5	1.88	0.88	1-3/8

① The 'E' Dimension is the minimum opening.

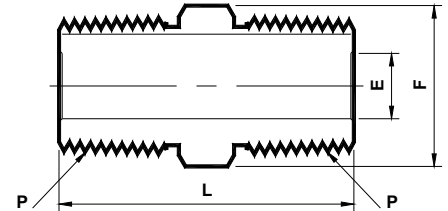
② NPT thread as per ANSI B 1.20.1.

NOTE : 1) Dimensions for reference only and are subject to change.

- ALL PART NUMBERS ARE PROPRIETARY OF THEIR RESPECTIVE OWNERS. -

- Precision pipe Fitting -
-(1/16"-2" NPT, 1/8"-1/2" BSP/ISO, SAE/MS) -

Hex Nipple
NPT (M) x NPT (M)
(N - PHN)



Tubefit Part No.	Equivalent Part No. Type 1	Equivalent Part No. Type 2	NPT ^② Male Pipe Size P	L	ØE ^①	Hex F
Dimensions in Inches						
1N - PHN	- 1 - HN	1 - 1 MHN	1/16x27	1.01	0.12	5/16
2N - PHN	- 2 - HN	2 - 2 MHN	1/8x27	1.01	0.19	7/16
4N - PHN	- 4 - HN	4 - 4 MHN	1/4x18	1.40	0.28	9/16
6N - PHN	- 6 - HN	6 - 6 MHN	3/8x18	1.43	0.38	11/16
8N - PHN	- 8 - HN	8 - 8 MHN	1/2x14	1.84	0.47	7/8
12N - PHN	- 12 - HN	12 - 12 MHN	3/4x14	1.84	0.62	1-1/16
16N - PHN	- 16 - HN	16 - 16 MHN	1x11.5	2.32	0.88	1-3/8
20N - PHN	SS - 20 - HN	20 - 20 MHN	1-1/4x11.5	2.41	1.09	1-3/4
24N - PHN	SS - 24 - HN	24 - 24 MHN	1-1/2x11.5	2.65	1.34	2-1/8
32N - PHN	SS - 32 - HN	-----	2x11.5	2.90	1.81	2-3/4

① The 'E' Dimension is the minimum opening.

② NPT thread as per ANSI B 1.20.1.

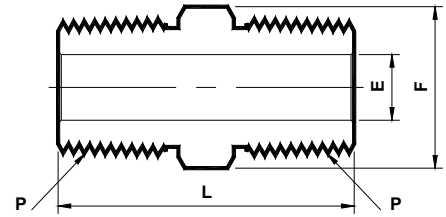
NOTE : 1) Dimensions for reference only and are subject to change.

- ALL PART NUMBERS ARE PROPRIETARY OF THEIR RESPECTIVE OWNERS. -



- Precision pipe Fitting -
-(1/16"-2" NPT, 1/8"-1/2" BSP/ISO, SAE/MS) -

Hex Nipple
ISO Tapered (M) x ISO Tapered (M)
(IT - PHN)



3

TubeFit Part No.	Equivalent Part No. Type 1	Equivalent Part No. Type 2	ISO ② Male Pipe Size P	L	ØE ①	Hex F
Dimensions in Inches						
2IT - PHN	- 2 - HN - RT	-----	1/8x28	1.01	0.18	7/16
4IT - PHN	- 4 - HN - RT	-----	1/4x19	1.40	0.28	9/16
6IT - PHN	- 6 - HN - RT	-----	3/8x19	1.43	0.37	11/16
8IT - PHN	- 8 - HN - RT	-----	1/2x14	1.84	0.46	7/8

① The 'E' Dimension is the minimum opening.

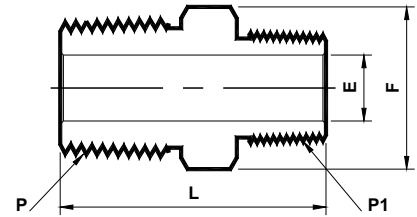
② ISO (BSP Tapered) thread as per BS 21.

NOTE : 1) Dimensions for reference only and are subject to change.

- ALL PART NUMBERS ARE PROPRIETARY OF THEIR RESPECTIVE OWNERS. -

- Precision pipe Fitting -
-(1/16"-2" NPT, 1/8"-1/2" BSP/ISO, SAE/MS) -

Hex Reducing Nipple
NPT (M) x NPT (M)
(N - PHRN - N)



4

TubeFit Part No.	Equivalent Part No. Type 1	Equivalent Part No. Type 2	NPT ② Male Pipe Size P	NPT ② Male Pipe Size P1	L	ØE ①	Hex F
Dimensions in Inches							
2 - PHRN - 1N	- 2 - HRN - 1	2 - 1 MHN	1/8x27	1/16x27	1.01	0.12	7/16
4 - PHRN - 1N	-----	4 - 1 MHN	1/4x18	1/16x27	1.25	0.12	9/16
4 - PHRN - 2N	- 4 - HRN - 2	4 - 2 MHN		1/8x27	1.22	0.19	9/16
6 - PHRN - 1N	-----	6 - 1 MHN	3/8x18	1/16x27	1.27	0.12	11/16
6 - PHRN - 2N	- 6 - HRN - 2	6 - 2 MHN		1/8x27	1.25	0.19	11/16
6 - PHRN - 4N	- 6 - HRN - 4	6 - 4 MHN		1/4x18	1.43	0.28	11/16
8 - PHRN - 2N	- 8 - HRN - 2	8 - 2 MHN	1/2x14	1/8x27	1.47	0.19	7/8
8 - PHRN - 4N	- 8 - HRN - 4	8 - 4 MHN		1/4x18	1.65	0.28	7/8
8 - PHRN - 6N	- 8 - HRN - 6	8 - 6 MHN		3/8x18	1.65	0.38	7/8
12 - PHRN - 2N	-----	12 - 2 MHN	3/4x14	1/8x27	1.59	0.19	1-1/16
12 - PHRN - 4N	- 12 - HRN - 4	12 - 4 MHN		1/4x18	1.65	0.28	1-1/16
12 - PHRN - 6N	-----	12 - 6 MHN		3/8x18	1.78	0.38	1-1/16
12 - PHRN - 8N	- 12 - HRN - 8	12 - 8 MHN		1/2x14	1.84	0.47	1-1/16
16 - PHRN - 2N	-----	16 - 2 MHN	1x11.5	1/8x27	1.78	0.19	1-3/8
16 - PHRN - 4N	-----	16 - 4 MHN		1/4x18	1.97	0.28	1-3/8
16 - PHRN - 8N	- 16 - HRN - 8	16 - 8 MHN		1/2x14	2.13	0.47	1-3/8
16 - PHRN - 12N	- 16 - HRN - 12	16 - 12 MHN		3/4x14	2.13	0.62	1-3/8
20 - PHRN - 16N	SS - 20 - HRN - 16	20 - 16 MHN	1-1/4x11.5	1x11.5	2.41	0.88	1-3/4
24 - PHRN - 16N	SS - 24 - HRN - 16	-----	1-1/2x11.5	1x11.5	2.56	0.88	2-1/8
32 - PHRN - 16N	SS - 32 - HRN - 16	-----	2x11.5	1x11.5	2.78	0.88	2-3/4

① The 'E' Dimension is the minimum opening.

② NPT thread as per ANSI B 1.20.1.

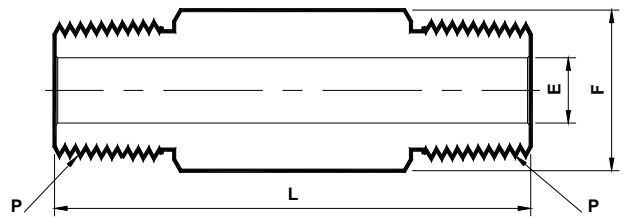
NOTE : 1) Dimensions for reference only and are subject to change.

- ALL PART NUMBERS ARE PROPRIETARY OF THEIR RESPECTIVE OWNERS. -



- Precision pipe Fitting -
 - (1/16"-2" NPT, 1/8"-1/2" BSP/ISO, SAE/MS) -

Hex Long Nipple
 NPT (M) x NPT (M)
 (N - PHLN)



Tubefit Part No.	Equivalent Part No. Type 1	Equivalent Part No. Type 2	NPT ^② Male Pipe Size P	L					ØE ^①	Hex F
				Available Lengths						
				1.50	2.00	2.50	3.00	4.00		
Dimensions in Inches										
1N - PHLN - (x)	-----	1 - 1 MHLN - (x)	1/16x27	x					0.12	7/16
2N - PHLN	- 2 - HLN -	2 - 2 MHLN - (x)	1/8x27	A	A	A	A	N/A	0.19	7/16
		2 - 2 MHLN - 1-1/2								
		2 - 2 MHLN - 2								
		2 - 2 MHLN - 2-1/2								
4N - PHLN	- 4 - HLN -	4 - 4 MHLN - (x)	1/4x18	A	A	A	A	A	0.28	9/16
		4 - 4 MHLN - 2								
		4 - 4 MHLN - 2-1/2								
		4 - 4 MHLN - 3								
6N - PHLN	- 6 - HLN -	6 - 6 MHLN - (x)	3/8x18	A	A	A	A	N/A	0.38	11/16
		6 - 6 MHLN - 2								
8N - PHLN	- 8 - HLN -	8 - 8 MHLN - (x)	1/2x14	N/A	A	N/A	A	A	0.47	7/8
		8 - 8 MHLN - 2								
		8 - 8 MHLN - 3								
12N - PHLN	- 12 - HLN -	-----	3/4x14	N/A	A	N/A	A	A	0.62	1-1/16
16N - PHLN	- 16 - HLN -	-----	1x11.5	N/A	N/A	N/A	A	A	0.88	1-3/8

- Specified length (x) to be shown as last designator in the ordering number; example : 1N - PHLN - 2.00
 - A - Available, N/A - Not Available

① The 'E' Dimension is the minimum opening.

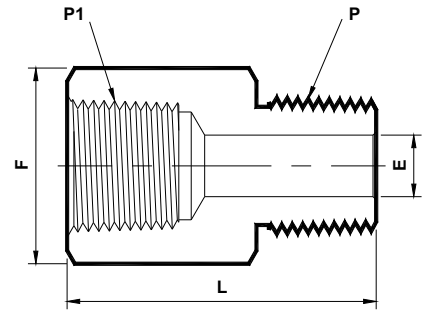
② NPT thread as per ANSI B 1.20.1.

NOTE : 1) Dimensions for reference only and are subject to change.



- Precision pipe Fitting -
- (1/16"-2" NPT, 1/8"-1/2" BSP/ISO, SAE/MS) -

Adapter
NPT (M) x NPT (F)
(N - PA)



Tubefit Part No.	Equivalent Part No. Type 1	Equivalent Part No. Type 2	NPT ^② Male Pipe Size P	NPT ^② Female Pipe Size P1	L	ØE ^①	Hex F
Dimensions in Inches							
2N - PA	- 2 - A	2 - 2 RA	1/8x27	1/8x27	1.10	0.19	9/16
4N - PA	- 4 - A	4 - 4 RA	1/4x18	1/4x18	1.40	0.28	3/4
6N - PA	- 6 - A	6 - 6 RA	3/8x18	3/8x18	1.51	0.38	7/8
8N - PA	- 8 - A	8 - 8 RA	1/2x14	1/2x14	1.94	0.47	1-1/16
12N - PA	- 12 - A	-----	3/4x14	3/4x14	2.02	0.62	1-1/4
16N - PA	- 16 - A	16 - 16 RA	1x11.5	1x11.5	2.28	0.88	1-5/8

① The 'E' Dimension is the minimum opening.

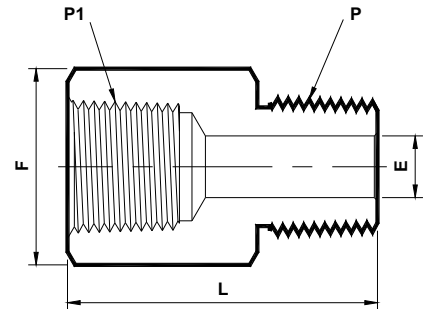
② NPT thread as per ANSI B 1.20.1.

NOTE : 1) Dimensions for reference only and are subject to change.

- ALL PART NUMBERS ARE PROPRIETARY OF THEIR RESPECTIVE OWNERS. -

- Precision pipe Fitting -
- (1/16"-2" NPT, 1/8"-1/2" BSP/ISO, SAE/MS) -

Adapter
ISO Tapered (M) x ISO Tapered (F)
(IT - PA)



Tubefit Part No.	Equivalent Part No. Type 1	Equivalent Part No. Type 2	ISO ^② Male Pipe Size P	ISO ^② Female Pipe Size P1	L	ØE ^①	Hex F
Dimensions in Inches							
2IT - PA	- 2 - A - RT	-----	1/8x28	1/8x28	1.09	0.18	9/16
4IT - PA	- 4 - A - RT	-----	1/4x19	1/4x19	1.42	0.28	3/4
6IT - PA	- 6 - A - RT	-----	3/8x19	3/8x19	1.50	0.37	7/8
8IT - PA	- 8 - A - RT	-----	1/2x14	1/2x14	1.95	0.46	1-1/16

① The 'E' Dimension is the minimum opening.

② ISO (BSP Tapered) thread as per BS 21.

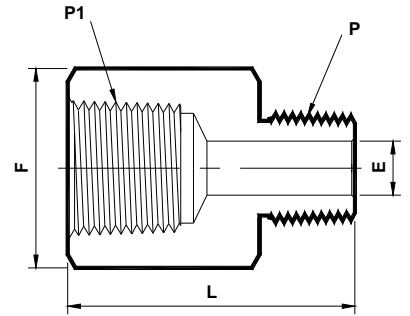
NOTE : 1) Dimensions for reference only and are subject to change.

- ALL PART NUMBERS ARE PROPRIETARY OF THEIR RESPECTIVE OWNERS. -



- Precision pipe Fitting -
 - (1/16"-2" NPT, 1/8"-1/2" BSP/ISO, SAE/MS) -

Reducing Adapter
NPT (F) x NPT (M)
(N - PRA - N)



TubeFit Part No.	Equivalent Part No. Type 1	Equivalent Part No. Type 2	NPT ^② Female Pipe Size P1	NPT ^② Male Pipe Size P	L	ØE ^①	Hex F
Dimensions in Inches							
2 - PRA - 1N	- 2 - RA - 1	2 - 1 RA	1/8x27		1.09	0.12	9/16
4 - PRA - 1N	-----	4 - 1 RA	1/4	1/16x27	1.20	0.12	3/4
6 - PRA - 1N	-----	6 - 1 RA	3/8		1.25	0.12	7/8
4 - PRA - 2N	- 4 - RA - 2	4 - 2 RA	1/4x18		1.26	0.19	3/4
6 - PRA - 2N	- 6 - RA - 2	6 - 2 RA	3/8x18		1.33	0.19	7/8
8 - PRA - 2N	- 8 - RA - 2	8 - 2 RA	1/2x14	1/8x27	1.58	0.19	1-1/16
12 - PRA - 2N	-----	12 - 2 RA	3/4		1.56	0.19	1-1/4
16 - PRA - 2N	-----	16 - 2 RA	1x11.5		1.81	0.19	1-5/8
6 - PRA - 4N	- 6 - RA - 4	6 - 4 RA	3/8x18		1.50	0.28	7/8
8 - PRA - 4N	- 8 - RA - 4	8 - 4 RA	1/2x14	1/4x18	1.76	0.28	1-1/16
12 - PRA - 4N	- 12 - RA - 4	12 - 4 RA	3/4x14		1.85	0.28	1-1/4
16 - PRA - 4N	- 16 - RA - 4	16 - 4 RA	1x11.5		1.96	0.28	1-5/8
8 - PRA - 6N	- 8 - RA - 6	8 - 6 RA	1/2x14		1.75	0.38	1-1/16
12 - PRA - 6N	- 12 - RA - 6	12 - 6 RA	3/4x14	3/8x18	1.82	0.38	1-1/4
16 - PRA - 6N	-----	16 - 6 RA	1x11.5		2.00	0.38	1-5/8
12 - PRA - 8N	- 12 - RA - 8	12 - 8 RA	3/4x14	1/2x14	2.02	0.47	1-1/4
16 - PRA - 8N	- 16 - RA - 8	16 - 8 RA	1x11.5		2.16	0.47	1-5/8
16 - PRA - 12N	- 16 - RA - 12	16 - 12 RA	1x11.5	3/4x14	2.17	0.62	1-5/8
24 - PRA - 12N	- 24 - RA - 12	-----	1-1/2x11.5		2.48	0.62	2-3/8
20 - PRA - 16N	- 20 - RA - 16	20 - 16 RA	1-1/4x11.5		2.53	0.88	2-1/8
24 - PRA - 16N	- 24 - RA - 16	-----	1-1/2x11.5	1x11.5	2.65	0.88	2-3/8
32 - PRA - 16N	- 32 - RA - 16	-----	2x11.5		2.68	0.88	2-7/8

① The 'E' Dimension is the minimum opening.

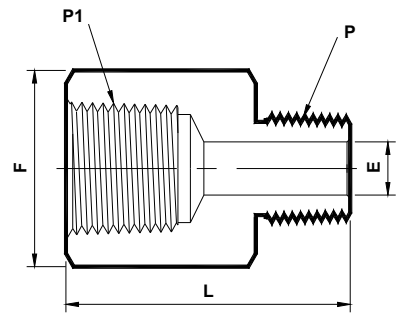
② NPT thread as per ANSI B 1.20.1.

NOTE : 1) Dimensions for reference only and are subject to change.



- Precision pipe Fitting -
- (1/16"-2" NPT, 1/8"-1/2" BSP/ISO, SAE/MS) -

Reducing Adapter
ISO Tapered (F) x ISO Tapered (M)
(IT - PRA - IT)



TubeFit Part No.	Equivalent Part No. Type 1	Equivalent Part No. Type 2	ISO ② Female Pipe Size P1	ISO ② Male Pipe Size P	L	ØE ①	Hex F
Dimensions in Inches							
4 - PRA - 2IT	- 4 - RAT - 2RT	-----	1/4x19	1/8x28	1.26	0.18	3/4
6 - PRA - 4IT	- 6 - RAT - 4RT	-----	3/8x19	1/4x19	1.50	0.28	7/8
8 - PRA - 4IT	- 8 - RAT - 4RT	-----	1/2x14	1/4x19	1.76	0.28	1-1/16
8 - PRA - 6IT	- 8 - RAT - 6RT	-----	1/2x14	3/8x19	1.75	0.37	1-1/16

① The 'E' Dimension is the minimum opening.

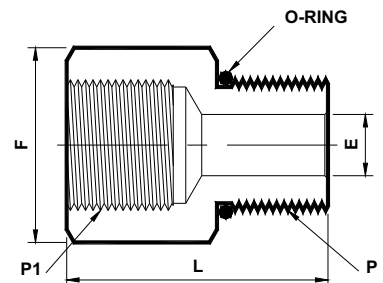
② ISO (BSP Tapered) thread as per BS 21.

NOTE : 1) Dimensions for reference only and are subject to change.

- ALL PART NUMBERS ARE PROPRIETARY OF THEIR RESPECTIVE OWNERS. -

- Precision pipe Fitting -
- (1/16"-2" NPT, 1/8"-1/2" BSP/ISO, SAE/MS) -

SAE Adapter
UNF (M) x UNF (F)
(U - PSA - U)



TubeFit Part No.	Equivalent Part No. Type 1	Equivalent Part No. Type 2	UNF ② Male Pipe Size P	UNF ② Female Pipe Size P1	L	ØE ①	Hex F
Dimensions in Inches							
9 - PSA - 7U	6 - RBST - 4	6 - 4 F5OG5	9/16x18	7/16x20	1.03	0.297	11/16
12 - PSA - 7U	8 - RBST - 4	8 - 4 F5OG5	3/4x16	7/16x20	1.09	0.375	7/8
17 - PSA - 12U	12 - RBST - 8	12 - 8 F5OG5	1-1/16x12	3/4x16	1.00	0.625	1-1/4
21 - PSA - 17U	16 - RBST - 12	16-12 F5OG5	1-5/16x12	1-1/16x12	1.75	0.750	1-1/2

- O-ring provided are Buna-N standard and Viton - optional.

① The 'E' Dimension is the minimum opening.

② SAE/MS (UNF) thread as per ASME B1.1.

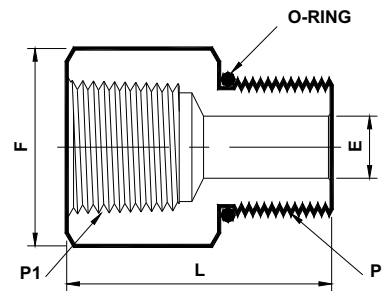
NOTE : 1) Dimensions for reference only and are subject to change.

- ALL PART NUMBERS ARE PROPRIETARY OF THEIR RESPECTIVE OWNERS. -



- Precision pipe Fitting -
 - (1/16"-2" NPT, 1/8"-1/2" BSP/ISO, SAE/MS) -

SAE Adapter
UNF (M) x NPT (F)
(U - PSA - N)



Tubefit Part No.	Equivalent Part No. Type 1	Equivalent Part No. Type 2	SAE/MS ^③ Male Pipe Size P	NPT ^② Female Pipe Size P1	L	ØE ^①	Hex F
Dimensions in Inches							
7U - PSA - 4N	4SAE - 7 - 4	4 - 4 GOA	7/16x20	1/4x18	1.19	0.20	3/4
9U - PSA - 6N	6SAE - 7 - 6	6 - 6 GOA	9/16x18	3/8x18	1.26	0.30	7/8
12U - PSA - 8N	8SAE - 7 - 8	8 - 8 GOA	3/4x16	1/2x14	1.50	0.39	1-1/16
17U - PSA - 12N	12SAE - 7 - 12	12 - 12 GOA	1-1/16x12	3/4x14	1.83	0.66	1-1/4
21U - PSA - 16N	16SAE - 7 - 16	16 - 16 GOA	1-5/16x12	1x11.5	1.88	0.88	1-5/8

- O-ring provided are Buna-N standard and Viton - optional.

① The 'E' Dimension is the minimum opening.

② NPT thread as per ANSI B 1.20.1.

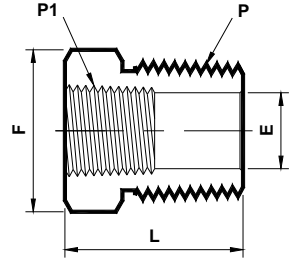
③ SAE/MS (UNF) thread as per ASME B1.1.

NOTE : 1) Dimensions for reference only and are subject to change.



- Precision pipe Fitting -
 - (1/16"-2" NPT, 1/8"-1/2" BSP/ISO, SAE/MS) -

Reducing Bushing
 NPT (M) x NPT (F)
 (N - PRB - N)



Tubefit Part No.	Equivalent Part No. Type 1	Equivalent Part No. Type 2	NPT ^② Male Pipe Size P	NPT ^② Female Pipe Size P1	L	ØE ^①	Hex F
Dimensions in Inches							
2 - PRB - 1N	- 2 - RB - 1	2 - 1 RB	1/8x27	1/16x27	1.03	0.19	7/16
4 - PRB - 1N	-----	4 - 1 RB	1/4x18	1/16x27	1.03	0.19	9/16
4 - PRB - 2N	- 4 - RB - 2	4 - 2 RB		1/8x27	1.06	0.28	9/16
6 - PRB - 1N	-----	6 - 1 RB	3/8x18	1/16x27	0.86	0.19	3/4
6 - PRB - 2N	- 6 - RB - 2	6 - 2 RB		1/8x27	0.86	0.34	3/4
6 - PRB - 4N	- 6 - RB - 4	6 - 4 RB		1/4x18	1.19	0.38	3/4
8 - PRB - 2N	- 8 - RB - 2	8 - 2 RB	1/2x14	1/8x27	1.08	0.34	7/8
8 - PRB - 4N	- 8 - RB - 4	8 - 4 RB		1/4x18	1.08	0.45	7/8
8 - PRB - 6N	- 8 - RB - 6	8 - 6 RB		3/8x18	1.41	0.47	7/8
12 - PRB - 2N	-----	12 - 2 RB	3/4x14	1/8x27	1.17	0.28	1-1/16
12 - PRB - 4N	- 12 - RB - 4	12 - 4 RB		1/4x18	1.08	0.45	1-1/16
12 - PRB - 6N	- 12 - RB - 6	12 - 6 RB		3/8x18	1.08	0.59	1-1/16
12 - PRB - 8N	- 12 - RB - 8	12 - 8 RB		1/2x14	1.63	0.62	1-1/16
16 - PRB - 2N	-----	16 - 2 RB	1x11.5	1/8x27	1.36	0.28	1-3/8
16 - PRB - 4N	- 16 - RB - 4	16 - 4 RB		1/4x18	1.37	0.45	1-3/8
16 - PRB - 6N	- 16 - RB - 6	16 - 6 RB		3/8x18	1.37	0.59	1-3/8
16 - PRB - 8N	- 16 - RB - 8	16 - 8 RB		1/2x14	1.37	0.73	1-3/8
16 - PRB - 12N	- 16 - RB - 12	16 - 12 RB		3/4x14	1.85	0.88	1-3/8
20 - PRB - 8N	SS - 20 - RB - 8	-----	1-1/4x11.5	1/2x14	1.46	0.73	1-3/4
20 - PRB - 12N	SS - 20 - RB - 12	20 - 12 RB		3/4x14	1.47	0.94	1-3/4
20 - PRB - 16N	SS - 20 - RB - 16	20 - 16 RB		1x11.5	1.94	1.17	1-3/4
24 - PRB - 8N	SS - 24 - RB - 8	-----	1-1/2x11.5	1/2x14	1.61	0.73	2-1/8
24 - PRB - 12N	SS - 24 - RB - 12	-----		3/4x14	1.61	0.94	2-1/8
24 - PRB - 16N	SS - 24 - RB - 16	24 - 16 RB		1x11.5	1.61	1.17	2-1/8
24 - PRB - 20N	SS - 24 - RB - 20	24 - 20 RB		1-1/4	2.31	1.50	2-1/8
32 - PRB - 8N	SS - 32 - RB - 8	-----	2x11.5	1/2x14	1.83	0.73	2-3/4
32 - PRB - 12N	SS - 32 - RB - 12	-----		3/4x14	1.83	0.94	2-3/4
32 - PRB - 16N	SS - 32 - RB - 16	-----		1x11.5	1.83	1.17	2-3/4
32 - PRB - 20N	SS - 32 - RB - 20	-----		1-1/4x11.5	1.83	1.50	2-3/4
32 - PRB - 24N	SS - 32 - RB - 24	-----		1-1/2x11.5	1.83	1.73	2-3/4

① The 'E' Dimension is the minimum opening.

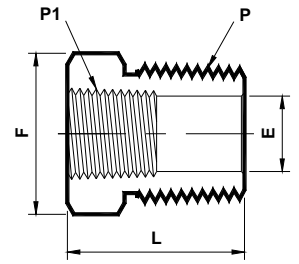
② NPT thread as per ANSI B 1.20.1.

NOTE : 1) Dimensions for reference only and are subject to change.



- Precision pipe Fitting -
-(1/16"-2" NPT, 1/8"-1/2" BSP/ISO, SAE/MS) -

Reducing Bushing
 ISO Tapered (M) x ISO Tapered (F)
 (IT - PRB - IT)



TubeFit Part No.	Equivalent Part No. Type 1	Equivalent Part No. Type 2	ISO ② Male Pipe Size P	ISO ② Female Pipe Size P1	L	ØE ①	Hex F
Dimensions in Inches							
4 - PRB - 2IT	- 4 - RBT - 2RT	-----	1/4x19	1/8x28	1.06	0.28	9/16
6 - PRB - 4IT	- 6 - RBT - 4RT	-----	3/8x19	1/4x19	1.19	0.37	3/4
8 - PRB - 4IT	- 8 - RBT - 4RT	-----	1/2x14	1/4x19	1.08	0.43	7/8
8 - PRB - 6IT	- 8 - RBT - 6RT	-----		3/8x19	1.41	0.46	

① The 'E' Dimension is the minimum opening.

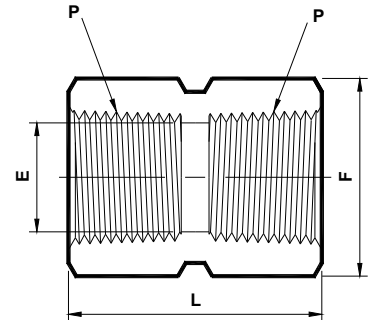
② ISO (BSP Tapered) thread as per BS 21.

NOTE : 1) Dimensions for reference only and are subject to change.

- ALL PART NUMBERS ARE PROPRIETARY OF THEIR RESPECTIVE OWNERS. -

- Precision pipe Fitting -
-(1/16"-2" NPT, 1/8"-1/2" BSP/ISO, SAE/MS) -

Hex Coupling
 NPT (F) x NPT (F)
 (N - PHC)



TubeFit Part No.	Equivalent Part No. Type 1	Equivalent Part No. Type 2	NPT ② Female Pipe Size P	L	ØE ①	Hex F
Dimensions in Inches						
1N - PHC	-----	1 - 1 FHC	1/16x27	0.75	0.25	1/2
2N - PHC	- 2 - HCG	2 - 2 FHC	1/8x27	0.81	0.34	9/16
4N - PHC	- 4 - HCG	4 - 4 FHC	1/4x18	1.19	0.45	3/4
6N - PHC	- 6 - HCG	6 - 6 FHC	3/8x18	1.31	0.59	7/8
8N - PHC	- 8 - HCG	8 - 8 FHC	1/2x14	1.56	0.73	1-1/16
12N - PHC	- 12 - HCG	12 - 12 FHC	3/4x14	1.62	0.94	1-1/4
16N - PHC	- 16 - HCG	16 - 16 FHC	1x11.5	2.00	1.17	1-5/8
20N - PHC	SS - 20 - HCG	20 - 20 FHC	1-1/4x11.5	2.38	1.50	2-1/8
24N - PHC	SS - 24 - HCG	24 - 24 FHC	1-1/2x11.5	2.62	1.73	2-3/8
32N - PHC	SS - 32 - HCG	-----	2x11.5	2.62	2.22	2-7/8

① The 'E' Dimension is the minimum opening.

② NPT thread as per ANSI B 1.20.1.

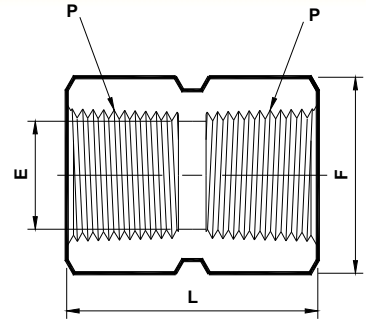
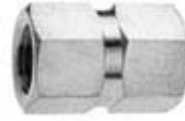
NOTE : 1) Dimensions for reference only and are subject to change.

- ALL PART NUMBERS ARE PROPRIETARY OF THEIR RESPECTIVE OWNERS. -



- Precision pipe Fitting -
- (1/16"-2" NPT, 1/8"-1/2" BSP/ISO, SAE/MS) -

Hex Coupling
ISO Tapered (F) x ISO Tapered (F)
(IT - PHC)



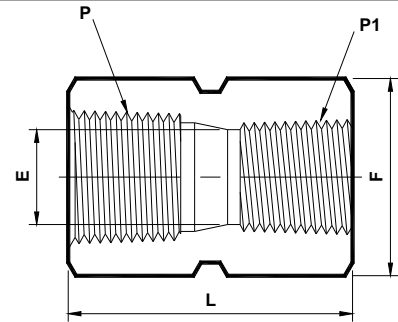
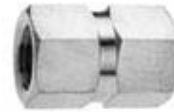
Tubefit Part No.	Equivalent Part No. Type 1	Equivalent Part No. Type 2	ISO ^② Female Pipe Size P	L	ØE ^①	Hex F
Dimensions in Inches						
2IT - PHC	- 2 - HCG - RT	-----	1/8x28	0.81	0.32	9/16
4IT - PHC	- 4 - HCG - RT	-----	1/4x19	1.19	0.43	3/4
6IT - PHC	- 6 - HCG - RT	-----	3/8x19	1.31	0.57	7/8
8IT - PHC	- 8 - HCG - RT	-----	1/2x14	1.56	0.71	1-1/16

- ① The 'E' Dimension is the minimum opening.
 ② ISO (BSP Tapered) thread as per BS 21.
 NOTE : 1) Dimensions for reference only and are subject to change.

- ALL PART NUMBERS ARE PROPRIETARY OF THEIR RESPECTIVE OWNERS. -

- Precision pipe Fitting -
- (1/16"-2" NPT, 1/8"-1/2" BSP/ISO, SAE/MS) -

Hex Reducing Coupling
NPT (F) x NPT (F)
(N - PHRC - N)



Tubefit Part No.	Equivalent Part No. Type 1	Equivalent Part No. Type 2	NPT ^② Female Pipe Size P	NPT ^② Female Pipe Size P1	L	ØE ^①	Hex F
Dimensions in Inches							
2 - PHRC - 1N	-----	2 - 1 FHC	1/8x27	1/16x27	0.75	0.25	9/16
2 - PHRC - 4N	- 4 - HRCG - 2	4 - 2 FHC		1/4	1.22	0.34	3/4
4 - PHRC - 1N	-----	4 - 1 FHC	1/4x18	1/16x27	0.92	0.25	3/4
6 - PHRC - 1N	-----	6 - 1 FHC	3/8x18	1/16x27	0.95	0.25	7/8
6 - PHRC - 2N	-----	6 - 2 FHC		1/8x27	1.03	0.34	7/8
6 - PHRC - 4N	- 6 - HRCG - 4	6 - 4 FHC		1/4x18	1.38	0.45	7/8
8 - PHRC - 2N	- 8 - HRCG - 2	8 - 2 FHC	1/2x14	1/8x27	1.56	0.34	9/16
8 - PHRC - 4N	- 8 - HRCG - 4	8 - 4 FHC		1/4x18	1.75	0.45	1-1/16
8 - PHRC - 6N	- 8 - HRCG - 6	8 - 6 FHC		3/8x18	1.78	0.59	1-1/16
12 - PHRC - 2N	-----	12 - 2 FHC	3/4x14	1/8x27	1.39	0.34	1-1/4
12 - PHRC - 4N	- 12 - HRCG - 4	12 - 4 FHC		1/4x18	1.81	0.45	1-1/4
12 - PHRC - 6N	-----	12 - 6 FHC		3/8x18	1.69	0.58	1-1/4
12 - PHRC - 8N	- 12 - HRCG - 8	12 - 8 FHC		1/2x14	2.06	0.73	1-1/4
16 - PHRC - 2N	-----	16 - 2 FHC	1x11.5	1/8x27	1.44	0.34	1-5/8
16 - PHRC - 4N	-----	16 - 4 FHC		1/4x18	1.63	0.45	1-5/8
16 - PHRC - 6N	-----	16 - 6 FHC		3/8x18	1.63	0.58	1-5/8
16 - PHRC - 8N	- 16 - HRCG - 8	16 - 8 FHC		1/2x14	2.19	0.73	1-5/8
16 - PHRC - 12N	- 16 - HRCG - 12	16 - 12 FHC		3/4x14	2.25	0.94	1-5/8
20 - PHRC - 16N	SS - 20 - HRCG - 16	20 - 16 FHC	1-1/4x11.5	1x11.5	2.41	1.17	2-1/8
24 - PHRC - 16N	SS - 24 - HRCG - 16	-----	1-1/2x11.5	1x11.5	2.38	1.17	2-3/8
32 - PHRC - 16N	SS - 32 - HRCG - 16	-----	2x11.5	1x11.5	2.58	1.17	2-7/8

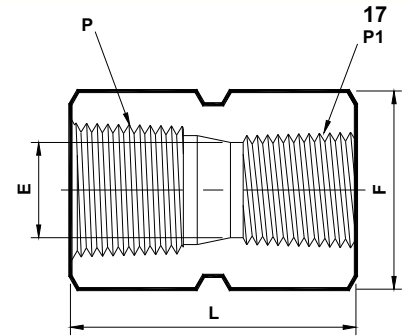
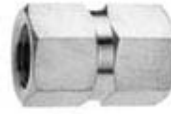
- ① The 'E' Dimension is the minimum opening.
 ② NPT thread as per ANSI B 1.20.1.
 NOTE : 1) Dimensions for reference only and are subject to change.

- ALL PART NUMBERS ARE PROPRIETARY OF THEIR RESPECTIVE OWNERS. -



- Precision pipe Fitting -
-(1/16"-2" NPT, 1/8"-1/2" BSP/ISO, SAE/MS) -

Hex Reducing Coupling
ISO Tapered (F) x ISO Tapered (F)
(IT - PHRC - IT)



17

Tubefit Part No.	Equivalent Part No. Type 1	Equivalent Part No. Type 2	ISO ② Female Pipe Size P	ISO ② Female Pipe Size P1	L	ØE ①	Hex F
Dimensions in Inches							
6 - PHRC - 4IT	- 6 - HRCGT - 4RT	-----	3/8x19	1/4x19	1.38	0.43	7/8
8 - PHRC - 4IT	- 8 - HRCGT - 4RT	-----	1/2x14	1/4x19	1.75	0.43	1-1/16
8 - PHRC - 6IT	- 8 - HRCGT - 6RT	-----	1/2x14	3/8x19	1.78	0.57	1-1/16

① The 'E' Dimension is the minimum opening.

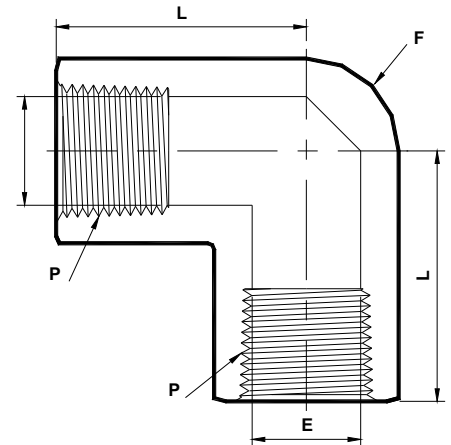
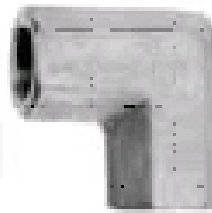
② ISO (BSP Tapered) thread as per BS 21.

NOTE : 1) Dimensions for reference only and are subject to change.

- ALL PART NUMBERS ARE PROPRIETARY OF THEIR RESPECTIVE OWNERS. -

- Precision pipe Fitting -
-(1/16"-2" NPT, 1/8"-1/2" BSP/ISO, SAE/MS) -

Female Elbow
NPT (F) x NPT (F)
(N - PFE)



18

Tubefit Part No.	Equivalent Part No. Type 1	Equivalent Part No. Type 2	NPT ② Female Pipe Size P	L	ØE ①	Hex F
Dimensions in Inches						
1N - PFE	-----	1 - 1 FE	1/16x27	0.50	0.25	7/16
2N - PFE	- 2 - E	2 - 2 FE	1/8x27	1.04	0.34	9/16
4N - PFE	- 4 - E	4 - 4 FE	1/4x18	1.17	0.45	3/4
6N - PFE	- 6 - E	6 - 6 FE	3/8x18	1.42	0.59	7/8
8N - PFE	- 8 - E	8 - 8 FE	1/2x14	1.56	0.73	1-1/16
12N - PFE	- 12 - E	12 - 12 FE	3/4x14	1.92	0.94	1-1/4
16N - PFE	- 16 - E	16 - 16 FE	1x11.5	1.91	1.17	1-5/8
20N - PFE	-----	20 - 20 FE	1-1/4x11.5	1.70	1.51	1-7/8
24N - PFE	-----	24 - 24 FE	1-1/2x11.5	2.08	1.75	2-1/2

① The 'E' Dimension is the minimum opening.

② NPT thread as per ANSI B 1.20.1.

NOTE : 1) Dimensions for reference only and are subject to change.

- ALL PART NUMBERS ARE PROPRIETARY OF THEIR RESPECTIVE OWNERS. -