

Pipe Fittings

Part - 2

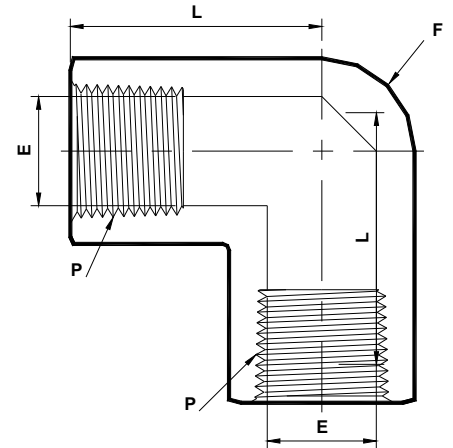


163/C, Oshiwara Industrial Centre, Link Road,
Goregaon (W), Mumbai-400104. INDIA
Tel : +91-22-2876 6982 / 56903564 / 55727627
Fax : +91-22-28766998
Email : sales@tubefiteng.com / tubefit@vsnl.com
Website : www.tubefiteng.com



- Precision pipe Fitting -
-(1/16"-2" NPT, 1/8"-1/2" BSP/ISO, SAE/MS) -

Female Elbow
ISO Tapered (F) x ISO Tapered (F)
(IT - PFE)



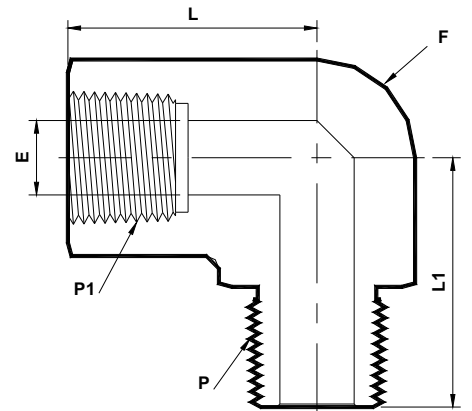
Tubefit Part No.	Equivalent Part No. Type 1	Equivalent Part No. Type 2	ISO ^② Female Pipe Size P	L	ØE ^①	Hex F
Dimensions in Inches						
4IT - PFE	- 4 - E - RT	-----	1/4x19	1.17	0.43	3/4
6IT - PFE	- 6 - E - RT	-----	3/8x19	1.42	0.57	7/8
8IT - PFE	- 8 - E - RT	-----	1/2x14	1.56	0.71	1-1/16

- ① The 'E' Dimension is the minimum opening.
 - ② ISO (BSP Tapered) thread as per BS 21.
- NOTE : 1) Dimensions for reference only and are subject to change.

- ALL PART NUMBERS ARE PROPRIETARY OF THEIR RESPECTIVE OWNERS. -

- Precision pipe Fitting -
-(1/16"-2" NPT, 1/8"-1/2" BSP/ISO, SAE/MS) -

Street Elbow
NPT (M) x NPT (F)
(N - PSE - N)



Tubefit Part No.	Equivalent Part No. Type 1	Equivalent Part No. Type 2	NPT ^② Male Pipe Size P	NPT ^② Female Pipe Size P1	L	L1	ØE ^①	Hex F
Dimensions in Inches								
1 - PSE - 1N	- 1 - SE	1 - 1 SE	1/16x27	1/16x27	0.86	0.88	0.12	7/16
2 - PSE - 2N	- 2 - SE	2 - 2 SE	1/8x27	1/8x27	1.04	0.87	0.19	9/16
4 - PSE - 4N	- 4 - SE	4 - 4 SE	1/4x18	1/4x18	1.17	1.17	0.28	3/4
6 - PSE - 6N	- 6 - SE	6 - 6 SE	3/8x18	3/8x18	1.42	1.26	0.38	7/8
8 - PSE - 8N	- 8 - SE	8 - 8 SE	1/2x14	1/2x14	1.56	1.56	0.47	1-1/16
12 - PSE - 12N	- 12 - SE	12 - 12 SE	3/4x14	3/4x14	1.92	1.67	0.62	1-1/4
16 - PSE - 16N	- 16 - SE	16 - 16 SE	1x11.5	1x11.5	1.91	1.94	0.88	1-5/8
20 - PSE - 20N	-----	20 - 20 SE	1-1/4x11.5	1-1/4x11.5	1.91	2.38	1.09	1-7/8

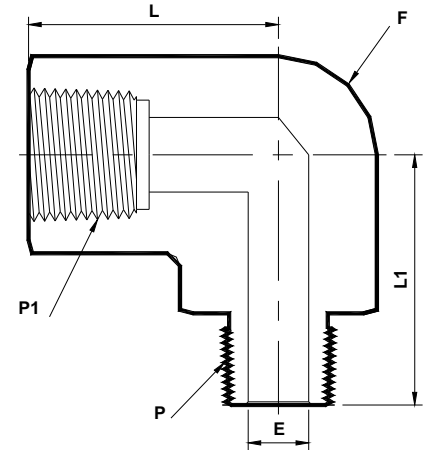
- ① The 'E' Dimension is the minimum opening.
 - ② NPT thread as per ANSI B 1.20.1.
- NOTE : 1) Dimensions for reference only and are subject to change.

- ALL PART NUMBERS ARE PROPRIETARY OF THEIR RESPECTIVE OWNERS. -



- Precision pipe Fitting -
 - (1/16"-2" NPT, 1/8"-1/2" BSP/ISO, SAE/MS) -

Reducing Street Elbow
 NPT (M) x NPT (F)
 (N - PRSE - N)



TubeFit Part No.	Equivalent Part No. Type 1	Equivalent Part No. Type 2	NPT ^② Male Pipe Size P	NPT ^② Female Pipe Size P1	L	L1	ØE ^①	Hex F
Dimensions in Inches								
2 - PRSE - 1N	- 2 - RSE - 1	2 - 1 SE	1/8x27	1/16x27	1.04	0.87	0.12	7/16
4 - PRSE - 1N	-----	4 - 1 SE	1/4x18	1/16x27	0.66	1.09	0.12	9/16
4 - PRSE - 2N	- 4 - RSE - 2	4 - 2 SE		1/8x27	1.17	1.00	0.19	9/16
6 - PRSE - 1N	-----	6 - 1 SE	3/8x18	1/16x27	0.88	1.09	0.12	11/16
6 - PRSE - 2N	-----	6 - 2 SE		1/8x27	0.88	1.22	0.19	11/16
6 - PRSE - 4N	- 6 - RSE - 4	6 - 4 SE		1/4x18	1.42	1.26	0.28	3/4
8 - PRSE - 2N	-----	8 - 2 SE	1/2x14	1/8x27	0.95	1.47	0.19	7/8
8 - PRSE - 4N	- 8 - RSE - 4	8 - 4 SE		1/4x18	1.56	1.38	0.28	7/8
8 - PRSE - 6N	- 8 - RSE - 6	8 - 6 SE		3/8x18	1.56	1.38	0.38	7/8
12 - PRSE - 2N	-----	12 - 2 SE	3/4x14	1/8x27	1.00	1.59	0.19	1-1/16
12 - PRSE - 4N	-----	12 - 4 SE		1/4x18	1.00	1.59	0.28	1-1/16
12 - PRSE - 6N	-----	12 - 6 SE		3/8x18	1.23	1.59	0.38	1-1/16
12 - PRSE - 8N	-----	12 - 8 SE		1/2x14	1.23	1.59	0.28	1-1/16
16 - PRSE - 2N	-----	16 - 2 SE	1x11.5	1/8x27	1.63	1.97	0.19	1-3/8
16 - PRSE - 4N	-----	16 - 4 SE		1/4x18	1.63	1.97	0.28	1-3/8
16 - PRSE - 6N	-----	16 - 6 SE		3/8x18	1.50	1.97	0.38	1-3/8
16 - PRSE - 8N	-----	16 - 8 SE		1/2x14	1.63	1.97	0.28	1-3/8
16 - PRSE - 12N	-----	16 - 12 SE		3/4x14	1.36	1.97	0.57	1-3/8

① The 'E' Dimension is the minimum opening.

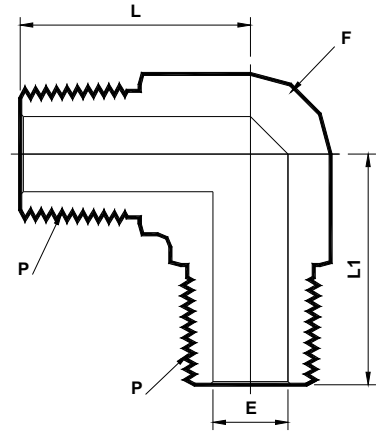
② NPT thread as per ANSI B 1.20.1.

NOTE : 1) Dimensions for reference only and are subject to change.



- Precision pipe Fitting -
-(1/16"-2" NPT, 1/8"-1/2" BSP/ISO, SAE/MS) -

Male Elbow
NPT (M) x NPT (M)
(N - PME)



22

TubeFit Part No.	Equivalent Part No. Type 1	Equivalent Part No. Type 2	NPT ^② Male Pipe Size P	L	ØE ^①	Hex F
Dimensions in Inches						
1N - PME	-----	1 - 1 ME	1/16x27	0.66	0.12	7/16
2N - PME	- 2 - ME	2 - 2 ME	1/8x27	0.88	0.19	7/16
4N - PME	- 4 - ME	4 - 4 ME	1/4x18	1.05	0.28	9/16
6N - PME	- 6 - ME	6 - 6 ME	3/8x18	1.17	0.38	11/16
8N - PME	- 8 - ME	8 - 8 ME	1/2x14	1.45	0.47	7/8
12N - PME	-----	12 - 12 ME	3/4x14	1.59	0.57	1-1/16
16N - PME	-----	16 - 16 ME	1x11.5	1.97	0.71	1-3/8

① The 'E' Dimension is the minimum opening.

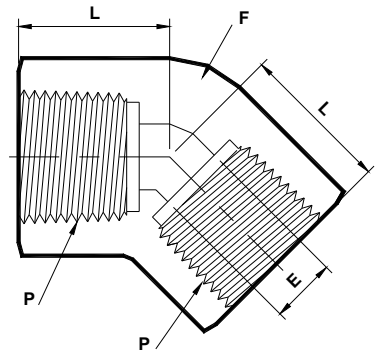
② NPT thread as per ANSI B 1.20.1.

NOTE : 1) Dimensions for reference only and are subject to change.

- ALL PART NUMBERS ARE PROPRIETARY OF THEIR RESPECTIVE OWNERS. -

- Precision pipe Fitting -
-(1/16"-2" NPT, 1/8"-1/2" BSP/ISO, SAE/MS) -

45° Female Elbow
NPT (F) x NPT (F)
(N - 45PFE)



23

TubeFit Part No.	Equivalent Part No. Type 1	Equivalent Part No. Type 2	NPT ^② Female Pipe Size P	L	ØE ^①	Hex F
Dimensions in Inches						
1N - 45PFE	-----	1 - 1 FVE	1/16x27	0.47	0.12	7/16
2N - 45PFE	-----	2 - 2 FVE	1/8x27	0.47	0.19	7/16
4N - 45PFE	-----	4 - 4 FVE	1/4x18	0.69	0.28	9/16
6N - 45PFE	-----	6 - 6 FVE	3/8x18	0.75	0.38	11/16
8N - 45PFE	-----	8 - 8 FVE	1/2x14	0.94	0.47	7/8
12N - 45PFE	-----	12 - 12 FVE	3/4x14	1.00	0.57	1-1/16
16N - 45PFE	-----	16 - 16 FVE	1x11.5	1.19	0.71	1-3/8

① The 'E' Dimension is the minimum opening.

② NPT thread as per ANSI B 1.20.1.

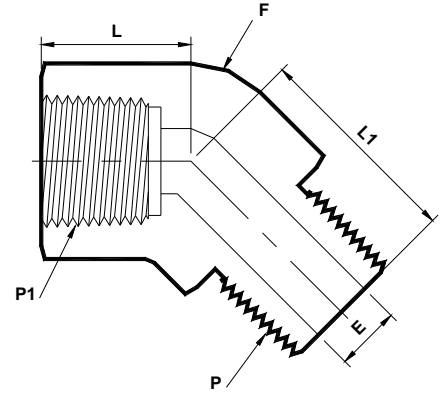
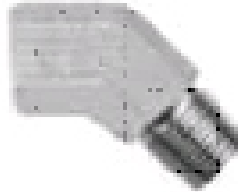
NOTE : 1) Dimensions for reference only and are subject to change.

- ALL PART NUMBERS ARE PROPRIETARY OF THEIR RESPECTIVE OWNERS. -



- Precision pipe Fitting -
- (1/16"-2" NPT, 1/8"-1/2" BSP/ISO, SAE/MS) -

45° Street Elbow
NPT (M) x NPT (F)
(N - 45PSE)



24

TubeFit Part No.	Equivalent Part No. Type 1	Equivalent Part No. Type 2	NPT ^② Male Pipe Size P	NPT ^② Female Pipe Size P1	L	L1	ØE ^①	Hex F
Dimensions in Inches								
1N - 45PSE	-----	1 - 1 SVE	1/16x27	1/16x27	0.47	0.66	0.12	7/16
2N - 45PSE	-----	2 - 2 SVE	1/8x27	1/8x27	0.47	0.72	0.19	9/16
4N - 45PSE	-----	4 - 4 SVE	1/4x18	1/4x18	0.63	1.05	0.28	3/4
6N - 45PSE	-----	6 - 6 SVE	3/8x18	3/8x18	0.72	1.06	0.38	7/8
8N - 45PSE	-----	8 - 8 SVE	1/2x14	1/2x14	0.91	1.34	0.47	1-1/16
12N - 45PSE	-----	12 - 12 SVE	3/4x14	3/4x14	0.97	1.38	0.62	1-1/4
16N - 45PSE	-----	16 - 16 SVE	1x11.5	1x11.5	1.13	1.72	0.88	1-5/8

① The 'E' Dimension is the minimum opening.

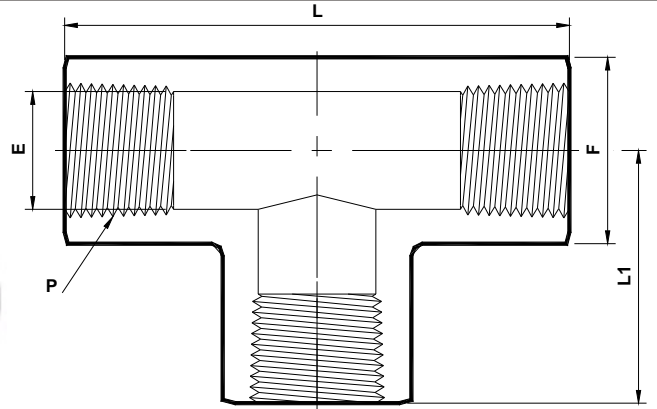
② NPT thread as per ANSI B 1.20.1.

NOTE : 1) Dimensions for reference only and are subject to change.

- ALL PART NUMBERS ARE PROPRIETARY OF THEIR RESPECTIVE OWNERS. -

- Precision pipe Fitting -
- (1/16"-2" NPT, 1/8"-1/2" BSP/ISO, SAE/MS) -

Female Tee
NPT (F) x NPT (F) x NPT (F)
(N - PFT)



25

TubeFit Part No.	Equivalent Part No. Type 1	Equivalent Part No. Type 2	NPT ^② Female Pipe Size P	L	L1	ØE ^①	Hex F
Dimensions in Inches							
1N - PFT	-----	1 - 1 - 1 FT	1/16x27	1.00	0.50	0.25	7/16
2N - PFT	- 2 - T	2 - 2 - 2 FT	1/8x27	2.08	1.04	0.34	9/16
4N - PFT	- 4 - T	4 - 4 - 4 FT	1/4x18	2.34	1.17	0.45	3/4
6N - PFT	- 6 - T	6 - 6 - 6 FT	3/8x18	2.84	1.42	0.59	7/8
8N - PFT	- 8 - T	8 - 8 - 8 FT	1/2x14	3.12	1.56	0.73	1-1/16
12N - PFT	- 12 - T	12 - 12 - 12 FT	3/4x14	3.84	1.92	0.94	1-1/4
16N - PFT	- 16 - T	16 - 16 - 16 FT	1x11.5	3.82	1.91	1.17	1-5/8
20N - PFT	-----	20 - 20 - 20 FT	1-1/4x27	3.40	1.70	1.51	1-7/8
24N - PFT	-----	24 - 24 - 24 FT	1-1/2x27	4.16	2.08	1.75	2-1/2

① The 'E' Dimension is the minimum opening.

② NPT thread as per ANSI B 1.20.1.

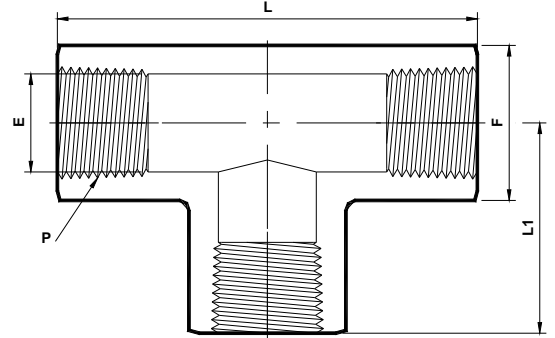
NOTE : 1) Dimensions for reference only and are subject to change.

- ALL PART NUMBERS ARE PROPRIETARY OF THEIR RESPECTIVE OWNERS. -



- Precision pipe Fitting -
-(1/16"-2" NPT, 1/8"-1/2" BSP/ISO, SAE/MS) -

Female Tee
 ISO Tapered (F) x ISO Tapered (F) x ISO Tapered (F)
 (IT - PFT)



TubeFit Part No.	Equivalent Part No. Type 1	Equivalent Part No. Type 2	ISO ② Female Pipe Size P	L	L1	ØE ①	Hex F
Dimensions in Inches							
4IT - PFT	- 4 - T - RT	-----	1/4x19	2.34	1.17	0.43	3/4
6IT - PFT	- 6 - T - RT	-----	3/8x19	2.84	1.42	0.57	7/8
8IT - PFT	- 8 - T - RT	-----	1/2x14	3.12	1.56	0.71	1-1/16

① The 'E' Dimension is the minimum opening.

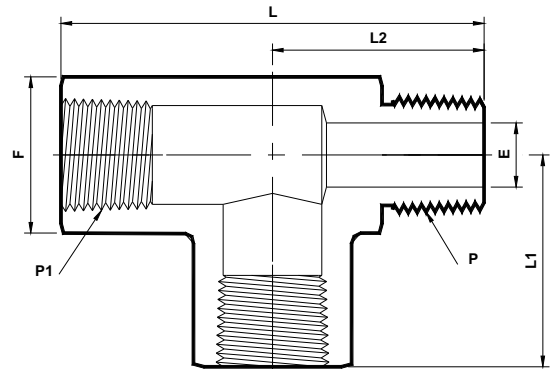
② ISO (BSP Tapered) thread as per BS 21.

NOTE : 1) Dimensions for reference only and are subject to change.

- ALL PART NUMBERS ARE PROPRIETARY OF THEIR RESPECTIVE OWNERS. -

- Precision pipe Fitting -
-(1/16"-2" NPT, 1/8"-1/2" BSP/ISO, SAE/MS) -

Street Tee
 NPT (F) x NPT (M) x NPT (F)
 (N - PST)



TubeFit Part No.	Equivalent Part No. Type 1	Equivalent Part No. Type 2	NPT ② Male Pipe Size P	NPT ② Female Pipe Size P1	L	L1	L2	ØE ①	Hex F
Dimensions in Inches									
1N - PST	-----	1 - 1 - 1 ST	1/16x27	1/16x27	1.22	0.50	0.72	0.12	7/16
2N - PST	- 2 - ST	2 - 2 - 2 ST	1/8x27	1/8x27	1.91	1.04	0.87	0.19	9/16
4N - PST	- 4 - ST	4 - 4 - 4 ST	1/4x18	1/4x18	2.34	1.17	1.17	0.28	3/4
6N - PST	- 6 - ST	6 - 6 - 6 ST	3/8x18	3/8x18	2.68	1.42	1.26	0.38	7/8
8N - PST	- 8 - ST	8 - 8 - 8 ST	1/2x14	1/2x14	3.12	1.56	1.56	0.47	1-1/16
12N - PST	-----	12 - 12 - 12 ST	3/4x14	3/4x14	2.95	1.36	1.59	0.57	1-1/4
16N - PST	-----	16 - 16 - 16 ST	1x11.5	1x11.5	3.60	1.63	1.97	0.71	1-5/8

① The 'E' Dimension is the minimum opening.

② NPT thread as per ANSI B 1.20.1.

NOTE : 1) Dimensions for reference only and are subject to change.

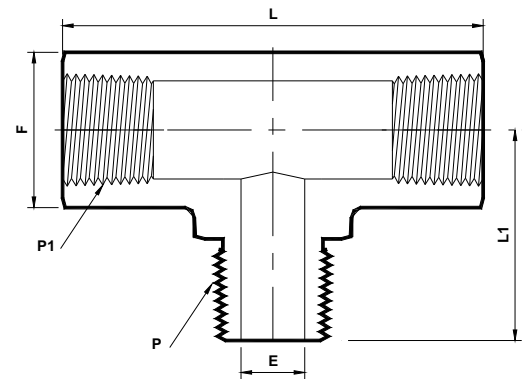
- ALL PART NUMBERS ARE PROPRIETARY OF THEIR RESPECTIVE OWNERS. -



- Precision pipe Fitting -
-(1/16"-2" NPT, 1/8"-1/2" BSP/ISO, SAE/MS) -

Branch Tee

NPT (F) x NPT (F) x NPT (M)
(N - PBT)



TubeFit Part No.	Equivalent Part No. Type 1	Equivalent Part No. Type 2	NPT ^② Male Pipe Size P	NPT ^② Female Pipe Size P1	L	L1	ØE ^①	Hex F
Dimensions in Inches								
1N - PBT	-----	1 - 1 - 1 MBT	1/16x27	1/16x27	1.00	0.72	0.12	7/16
2N - PBT	- 2 - BT	2 - 2 - 2 MBT	1/8x27	1/8x27	2.08	0.87	0.19	9/16
4N - PBT	- 4 - BT	4 - 4 - 4 MBT	1/4x18	1/4x18	2.34	1.17	0.28	3/4
6N - PBT	- 6 - BT	6 - 6 - 6 MBT	3/8x18	3/8x18	2.84	1.26	0.38	7/8
8N - PBT	- 8 - BT	8 - 8 - 8 MBT	1/2x14	1/2x14	3.12	1.56	0.47	1-1/16
12N - PBT	-----	12 - 12 - 12 MBT	3/4x14	3/4x14	2.72	1.59	0.62	1-1/4
16N - PBT	-----	16 - 16 - 16 MBT	1x11.5	1x11.5	3.26	1.97	0.88	1-5/8

① The 'E' Dimension is the minimum opening.

② NPT thread as per ANSI B 1.20.1.

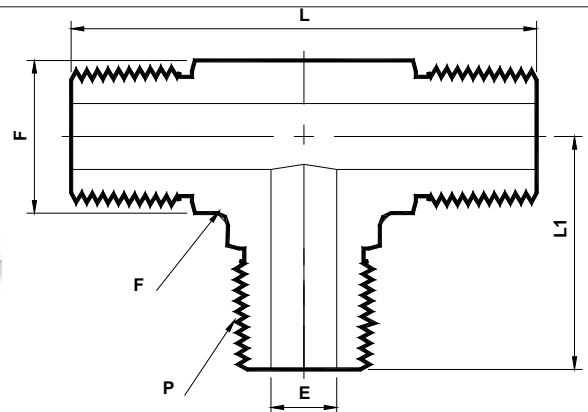
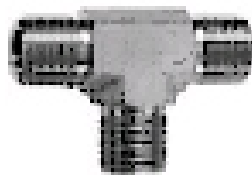
NOTE : 1) Dimensions for reference only and are subject to change.

- ALL PART NUMBERS ARE PROPRIETARY OF THEIR RESPECTIVE OWNERS. -

- Precision pipe Fitting -
-(1/16"-2" NPT, 1/8"-1/2" BSP/ISO, SAE/MS) -

Male Tee

NPT (M) x NPT (M) x NPT (M)
(N - PMT)



TubeFit Part No.	Equivalent Part No. Type 1	Equivalent Part No. Type 2	NPT ^② Male Pipe Size P	L	L1	ØE ^①	Hex F
Dimensions in Inches							
1N - PMT	-----	1 - 1 - 1 MT	1/16x27	1.44	0.72	0.12	7/16
2N - PMT	- 2 - MT	2 - 2 - 2 MT	1/8x27	1.76	0.88	0.19	7/16
4N - PMT	- 4 - MT	4 - 4 - 4 MT	1/4x18	2.10	1.05	0.28	9/16
6N - PMT	- 6 - MT	6 - 6 - 6 MT	3/8x18	2.34	1.17	0.38	11/16
8N - PMT	- 8 - MT	8 - 8 - 8 MT	1/2x14	2.90	1.45	0.47	7/8
12N - PMT	-----	12 - 12 - 12 MT	3/4x14	3.18	1.59	0.62	1-1/16
16N - PMT	-----	16 - 16 - 16 MT	1x11.5	3.94	1.97	0.88	1-3/8
20N - PMT	-----	20 - 20 - 20 MT	1-1/4x11.5	4.44	2.22	1.09	1-5/8
24N - PMT	-----	24 - 24 - 24 MT	1-1/2x11.5	5.28	2.64	1.34	1-7/8

① The 'E' Dimension is the minimum opening.

② NPT thread as per ANSI B 1.20.1.

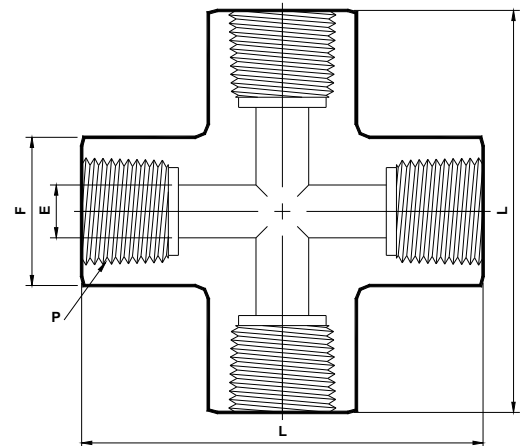
NOTE : 1) Dimensions for reference only and are subject to change.

- ALL PART NUMBERS ARE PROPRIETARY OF THEIR RESPECTIVE OWNERS. -



- Precision pipe Fitting -
-(1/16"-2" NPT, 1/8"-1/2" BSP/ISO, SAE/MS) -

Female Cross
NPT (F) x 4 Sides
(N - PFC)



TubeFit Part No.	Equivalent Part No. Type 1	Equivalent Part No. Type 2	NPT ^② Female Pipe Size P	L	ØE ^①	Hex F
Dimensions in Inches						
1N - PFC	-----	1 FX	1/16x27	1.00	0.25	7/16
2N - PFC	- 2 - CS	2 FX	1/8x27	2.08	0.34	9/16
4N - PFC	- 4 - CS	4 FX	1/4x18	2.34	0.45	3/4
6N - PFC	- 6 - CS	6 FX	3/8x18	2.84	0.59	7/8
8N - PFC	- 8 - CS	8 FX	1/2x14	3.12	0.73	1-1/16
12N - PFC	- 12 - CS	12 FX	3/4x14	3.84	0.94	1-1/4
16N - PFC	- 16 - CS	16 FX	1x11.5	3.82	1.17	1-5/8

① The 'E' Dimension is the minimum opening.

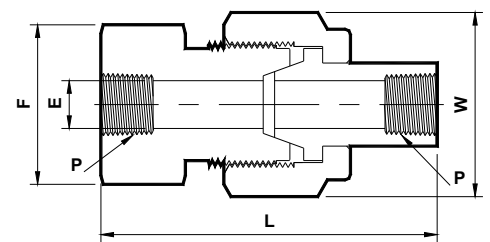
② NPT thread as per ANSI B 1.20.1.

NOTE : 1) Dimensions for reference only and are subject to change.

- ALL PART NUMBERS ARE PROPRIETARY OF THEIR RESPECTIVE OWNERS. -

- Precision pipe Fitting -
-(1/16"-2" NPT, 1/8"-1/2" BSP/ISO, SAE/MS) -

Union Ball Joint
NPT (F) x NPT (F)
(N - PUBJ)



TubeFit Part No.	Equivalent Part No. Type 1	Equivalent Part No. Type 2	NPT ^② Female Pipe Size P	L	ØE ^①	Hex F	Hex W
Dimensions in Inches							
2N - PUBJ	SS - 2 - UBJ	-----	1/8x27	1.81	0.27	1-1/8	15/16
4N - PUBJ	SS - 4 - UBJ	-----	1/4x18	2.34	0.36	1-3/8	1-3/16
6N - PUBJ	SS - 6 - UBJ	-----	3/8x18	2.50	0.52	1-1/2	1-5/16
8N - PUBJ	SS - 8 - UBJ	-----	1/2x14	2.69	0.62	1-3/4	1-5/8
12N - PUBJ	SS - 12 - UBJ	-----	3/4x14	3.12	0.88	2	1-7/8
16N - PUBJ	SS - 16 - UBJ	-----	1x11.5	3.56	1.03	2-1/2	2-3/8

① The 'E' Dimension is the minimum opening.

② NPT thread as per ANSI B 1.20.1.

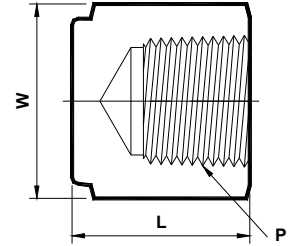
NOTE : 1) Dimensions for reference only and are subject to change.

- ALL PART NUMBERS ARE PROPRIETARY OF THEIR RESPECTIVE OWNERS. -



- Precision pipe Fitting -
-(1/16"-2" NPT, 1/8"-1/2" BSP/ISO, SAE/MS) -

Hex Female Pipe Cap
NPT (F)
(N - PHFPC)



TubeFit Part No.	Equivalent Part No. Type 1	Equivalent Part No. Type 2	NPT ^② Female Pipe Size P	L	Hex W
Dimensions in Inches					
1N - PHFPC	-----	1 CP	1/16x27	0.50	7/16
2N - PHFPC	- 2 - CP	2 CP	1/8x27	0.75	9/16
4N - PHFPC	- 4 - CP	4 CP	1/4x18	0.91	3/4
6N - PHFPC	- 6 - CP	6 CP	3/8x18	1.03	7/8
8N - PHFPC	- 8 - CP	8 CP	1/2x14	1.34	1-1/16
12N - PHFPC	- 12 - CP	12 CP	3/4x14	1.44	1-1/4
16N - PHFPC	- 16 - CP	16 CP	1x11.5	1.62	1-5/8
20N - PHFPC	- 20 - CP	-----	1-1/4x11.5	2.00	2-1/8
24N - PHFPC	- 24 - CP	-----	1-1/2x11.5	2.06	2-3/8
32N - PHFPC	- 32 - CP	-----	2x11.5	2.17	2-7/8

① The 'E' Dimension is the minimum opening.

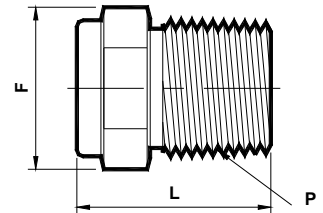
② NPT thread as per ANSI B 1.20.1.

NOTE : 1) Dimensions for reference only and are subject to change.

- ALL PART NUMBERS ARE PROPRIETARY OF THEIR RESPECTIVE OWNERS. -

- Precision pipe Fitting -
-(1/16"-2" NPT, 1/8"-1/2" BSP/ISO, SAE/MS) -

Hex Male Plug
NPT (M)
(N - PHMP)



TubeFit Part No.	Equivalent Part No. Type 1	Equivalent Part No. Type 2	NPT ^② Male Pipe Size P	L	Hex F
Dimensions in Inches					
1N - PHMP	- 1 - P	1 PH	1/16x27	0.75	5/16
2N - PHMP	- 2 - P	2 PH	1/8x27	0.75	7/16
4N - PHMP	- 4 - P	4 PH	1/4x18	0.96	9/16
6N - PHMP	- 6 - P	6 PH	3/8x18	0.99	11/16
8N - PHMP	- 8 - P	8 PH	1/2x14	1.21	7/8
12N - PHMP	- 12 - P	12 PH	3/4x14	1.21	1-1/16
16N - PHMP	- 16 - P	16 PH	1x11.5	1.50	1-3/8
20N - PHMP	SS - 20 - P	-----	1-1/4x11.5	1.59	1-3/4
24N - PHMP	SS - 24 - P	-----	1-1/2x11.5	1.74	2-1/8
32N - PHMP	SS - 32 - P	-----	2x11.5	1.96	2-3/4

① The 'E' Dimension is the minimum opening.

② NPT thread as per ANSI B 1.20.1.

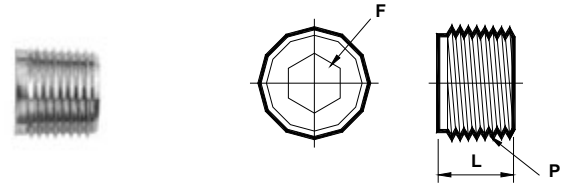
NOTE : 1) Dimensions for reference only and are subject to change.

- ALL PART NUMBERS ARE PROPRIETARY OF THEIR RESPECTIVE OWNERS. -



- Precision pipe Fitting -
-(1/16"-2" NPT, 1/8"-1/2" BSP/ISO, SAE/MS) -

Allen Plug
NPT (M)
(N - PAP)



34

TubeFit Part No.	Equivalent Part No. Type 1	Equivalent Part No. Type 2	NPT ^② Male Pipe Size P	L	Hex F
Dimensions in Inches					
1N - PAP	-----	1 PHH	1/16x27	0.30	5/32
2N - PAP	-----	2 PHH	1/8x27	0.30	3/16
4N - PAP	-----	4 PHH	1/4x18	0.47	1/4
6N - PAP	-----	6 PHH	3/8x18	0.47	5/16

① The 'E' Dimension is the minimum opening.

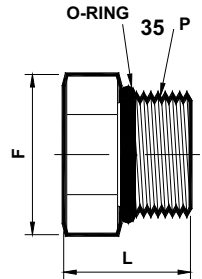
② NPT thread as per ANSI B 1.20.1.

NOTE : 1) Dimensions for reference only and are subject to change.

- ALL PART NUMBERS ARE PROPRIETARY OF THEIR RESPECTIVE OWNERS. -

- Precision pipe Fitting -
-(1/16"-2" NPT, 1/8"-1/2" BSP/ISO, SAE/MS) -

Hex SAE Plug
UNF (M)
(U - PHSP)



35

TubeFit Part No.	Equivalent Part No. Type 1	Equivalent Part No. Type 2	UNF ^② Male Pipe Size P	L	Hex F
Dimensions in Inches					
4U - PHSP	-----	4 P5ON	7/16x20	0.67	9/16
6U - PHSP	-----	6 P5ON	9/16x18	0.73	11/16
8U - PHSP	-----	8 P5ON	3/4x16	0.80	7/8
12U - PHSP	-----	12 P5ON	1-1/16x12	1.09	1-1/4
16U - PHSP	-----	16 P5ON	1-5/16x12	1.13	1-1/2

- O-ring provided are Buna-N standard and Viton - optional.

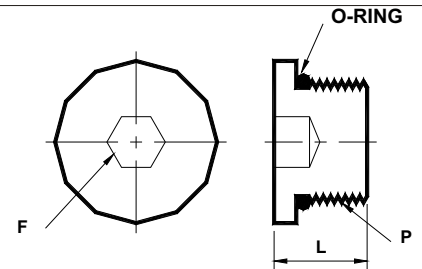
① SAE/MS (UNF) thread as per ASME B1.1.

NOTE : 1) Dimensions for reference only and are subject to change.

- ALL PART NUMBERS ARE PROPRIETARY OF THEIR RESPECTIVE OWNERS. -

- Precision pipe Fitting -
-(1/16"-2" NPT, 1/8"-1/2" BSP/ISO, SAE/MS) -

Allen SAE Plug
UNF (M)
(U - PASP)



36

TubeFit Part No.	Equivalent Part No. Type 1	Equivalent Part No. Type 2	UNF ^① Male Pipe Size P	L	Hex F
Dimensions in Inches					
4U - PASP	-----	4 HP5ON	7/16x20	0.47	3/16
6U - PASP	-----	6 HP5ON	9/16x18	0.50	1/4
8U - PASP	-----	8 HP5ON	3/4x16	0.58	5/16
12U - PASP	-----	12 HP5ON	1-1/16x12	0.77	9/16
16U - PASP	-----	16 HP5ON	1-5/16x12	0.77	5/8

- O-ring provided are Buna-N standard and Viton - optional.

① SAE/MS (UNF) thread as per ASME B1.1.

NOTE : 1) Dimensions for reference only and are subject to change.

- ALL PART NUMBERS ARE PROPRIETARY OF THEIR RESPECTIVE OWNERS. -